

fischer 

**Solar systems.
Mounting solutions
for photovoltaic panels.**



Mounting systems for pitched roofs.



Pitched roofs with tile or slate covering

The fischer range for fastening photovoltaic systems on pitched roofs with tiles or slates allows the installation of modules on roofs with or without ventilation strips, thanks to a complete range of hooks and screws.



Pitched roofs with corrugated sheets covering

The fischer fastening system with double thread screws with sealing gasket is ideal for photovoltaic installations on pitched roofs covered with corrugated sheets in different materials like fibre cement.



Pitched roofs with standing seam covering

The fischer system for photovoltaic installations on pitched roofs with standing seam covering involves the use of rails and clamps that guarantee the fastening of the panels both in portrait and landscape orientation.



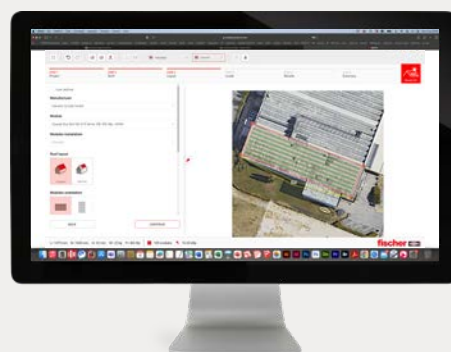
Pitched roofs with trapezoidal metal sheets covering

The fischer mounting system for trapezoidal metal sheets covering is arranged into a full range of products to ensure the installation of photovoltaic panels on residential, commercial and industrial roofs.

Discover the new SOLARPANEL-FIX calculation software

SOLARPANEL-FIX is an Online module of the FIXperience Suite for the design of mounting systems for photovoltaic panels. It supports professionals in the design of the photovoltaic substructure through a clear and logical flow.

The software allows to **automatically calculate the actions of snow and wind loads through the geolocation of the construction site**. In addition, it allows to download the bill of materials to create the substructure, the installation plan and a technical report.



Mounting systems for flat and special roofs.



Triangles structures for flat roofs

This system provides fast and long lasting installations thanks to a range of products for low load bearability roofs.



Steel systems for flat roofs

The fischer mounting system for photovoltaic panels with steel profiles allows to create customized structures of any extension and slope.



Customized solutions for special roof shapes

The aluminium customizable system for photovoltaic panels allows to create structures adaptable to any type of roof shape.

The new SOLARPANEL-FIX design software for free.



Find out more information at
<https://software.solar-fix.com>

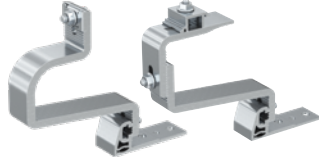
Assortment overview.

Hooks

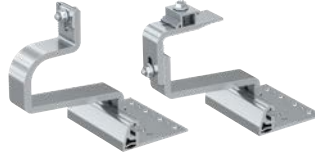
Hooks in aluminium and steel, available in fixed and adjustable variants, for fastening and supporting photovoltaic and solar systems on pitched roofs.



RH AL
Aluminium hook with fixed base for the installation of PV panels on pitched tile roofs without ventilation layer.



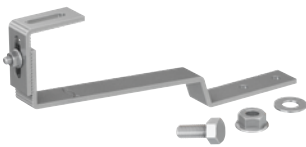
RH V AL / RH H AL
Aluminium hook with thin base for the installation of PV panels on pitched tile roofs with ventilation layer of variable thickness.



RH VB AL / RH HB AL
Aluminium hook with 3 adjustment positions for the installation of PV systems on tiled roofs with ventilation strips of variable thickness.



LAB AL
Angle connection bracket for the installation of landscape oriented PV panels on pitched roofs with tiles.



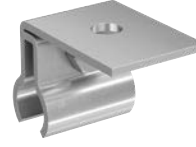
GT PR A2
Stainless steel hook for building structures for PV systems on roof tiles with a total thickness of up to 30 mm without ventilation strip.



GT A2
Stainless steel hook ideal to engage the load-bearing part of the support in case of discontinuous structures.



DLA A2
Stainless steel hook for building structures for PV systems on standing seam roofs. Suitable for flat seaming.



DLAK A2
Stainless steel hook for building structures for PV systems on standing seam roofs. Suitable for Kalzip standing seam.

Rails

High-performance universal aluminium rails for photovoltaic installations.



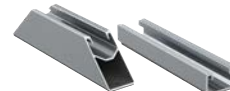
SolarFish H33
33 mm high aluminium rail for mounting systems for PV panels, particularly suitable for building structures on pitched roofs with supporting points close to each other.



SolarFish H44
Aluminium rail for building structures for PV systems. The 44 mm high cross-section makes it particularly versatile for systems to be built on both flat and pitched roofs.



SolarFish H83
Aluminium rail with increased 83 mm high cross-section that makes it particularly suitable to optimize the number of supports to the roof in case of heavy stress forces acting.



SolarMetal L
Aluminium rail for building structures for PV systems on trapezoidal metal sheet roofs. The section is optimised for allowing the landscape layout of the panels.



SolarMetal P
With this aluminum rail, PV systems can be mounted on pitched roofs with trapezoidal sheets orthogonal to the high corrugation.



Rail connector SolarFish H33
Aluminum connector for SolarFish H33 AL rails.



Rail connector SolarFish H44
Aluminum connector for SolarFish H44 AL rails.



Rail connector CPN AL
Profile connector for SolarFish H44 and SolarFish H83 rails, for extending the rails.

Rails

High-performance universal aluminium rails for photovoltaic installations.



PXC AL Plus

Connection bracket made of aluminum for connecting aluminum rails in a cross-connection for PV systems.

Clamps

Universal and pre-assembled clamps in aluminium for PV modules of various thicknesses.



PM U - PMC U

The universal clamp for PV panels from 30 to 50 mm thickness, whereby PM U can even be used as a central and end clamp.



PM

Pre-assembled clamp for PV panels with aluminium frame. Available in different variants depending on the thickness of the PV panel.



M

Non-assembled clamp, available in different variants depending on the thickness of the PV panel.



AK SP

The plastic cover cap is available in black and grey. It is placed on the end of the rails for a clean finish.

Double-threaded screws

Double-threaded screws with sealing gasket.



STSI A2

Double-threaded screw for fastening PV systems on corrugated panel or faux-barrel tile roofs with a steel load-bearing structure.



STSR A2

Double-threaded screw for PV installations on corrugated panel roofs with a wooden or fibre cement load-bearing structure.



MW A2

Angle brackets in stainless steel for the connection of the double-threaded screws with the Solar rails or for the connection of two overlapping Solar rails crossed at 90°.



SSP A2 + SSP Speed A2 Plus

Flat brackets for connecting Solar rails. Both SSP and SSP SPEED are available respectively in two variants with hole for M10 bars or with hole for M12 bars.

Triangles

Pre-assembled triangular frames with variable inclination for fastening PV modules, with either horizontal or vertical layout.



STFS


















Compact triangular frame for installing PV systems in a lowered position on flat roofs with panels arranged in a landscape layout.

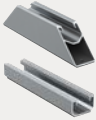
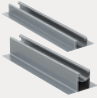


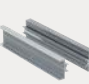







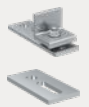


STFN

Triangular frame for flat roofs, suitable also for large PV panels with both portrait and landscape layout.

Selection guide for your perfect system.

	Hooks RH AL	RH V AL / RH H AL	RH VB AL / RH HB AL	LAB AL	GT PR A2	GT A2	DLA A2	DLAK A2	Triangles STFS STFN	Rails SolarFish H33 H44 H83
Roofs										
 Pitched roof with tiles or slate covering	•	•	•	•	•	•	-	-	-	•
 Pitched roofs with corrugated sheets covering	-	-	-	-	-	-	-	-	-	•
 Pitched roofs with standing seam covering	-	-	-	-	-	-	•	•	-	•
 Pitched roofs with trapezoidal metal sheets covering	-	-	-	-	-	-	-	-	-	-
 Triangles structures for flat roofs	-	-	-	-	-	-	-	-	•	-
 Steel systems for flat roofs	-	-	-	-	-	-	-	-	-	-
 Custom solutions for special shapes	-	-	-	-	-	-	-	-	-	-

SolarMetal L	SolarMetal P	Rail connector SolarFish H33	Rail connector SolarFish H44	Rail connector CPN AL	PXC AL Plus	Clamps PM U - PMC U	PM	M	Double-threaded screws			SSP A2 + SSP Speed Plus A2
									STSI A2	STSR A2	MW A2	
												
-	-	•	•	•	•	•	•	•	-	-	-	•
-	-	•	•	•	•	•	•	•	•	•	•	•
-	-	•	•	•	•	•	•	•	-	-	-	-
•	•	-	-	-	-	•	•	•	-	-	-	-
-	-	-	-	-	-	•	•	•	-	-	-	-
-	-	-	-	-	-	•	•	-	-	-	-	-
-	-	-	-	-	•	•	•	•	-	-	-	-

Dealer:

www.fischer-international.com



fischer stands for

Fixing Systems
fischertechnik
Consulting
Electronic Solutions

fischerwerke GmbH & Co. KG
Klaus-Fischer-Straße 1 · 72178 Waldachtal
Germany
P +49 7443 12-0
www.fischer-international.com · info@fischer.de
