

fischer 

InnoLock FES.
The safest
anchor channel
in the world.

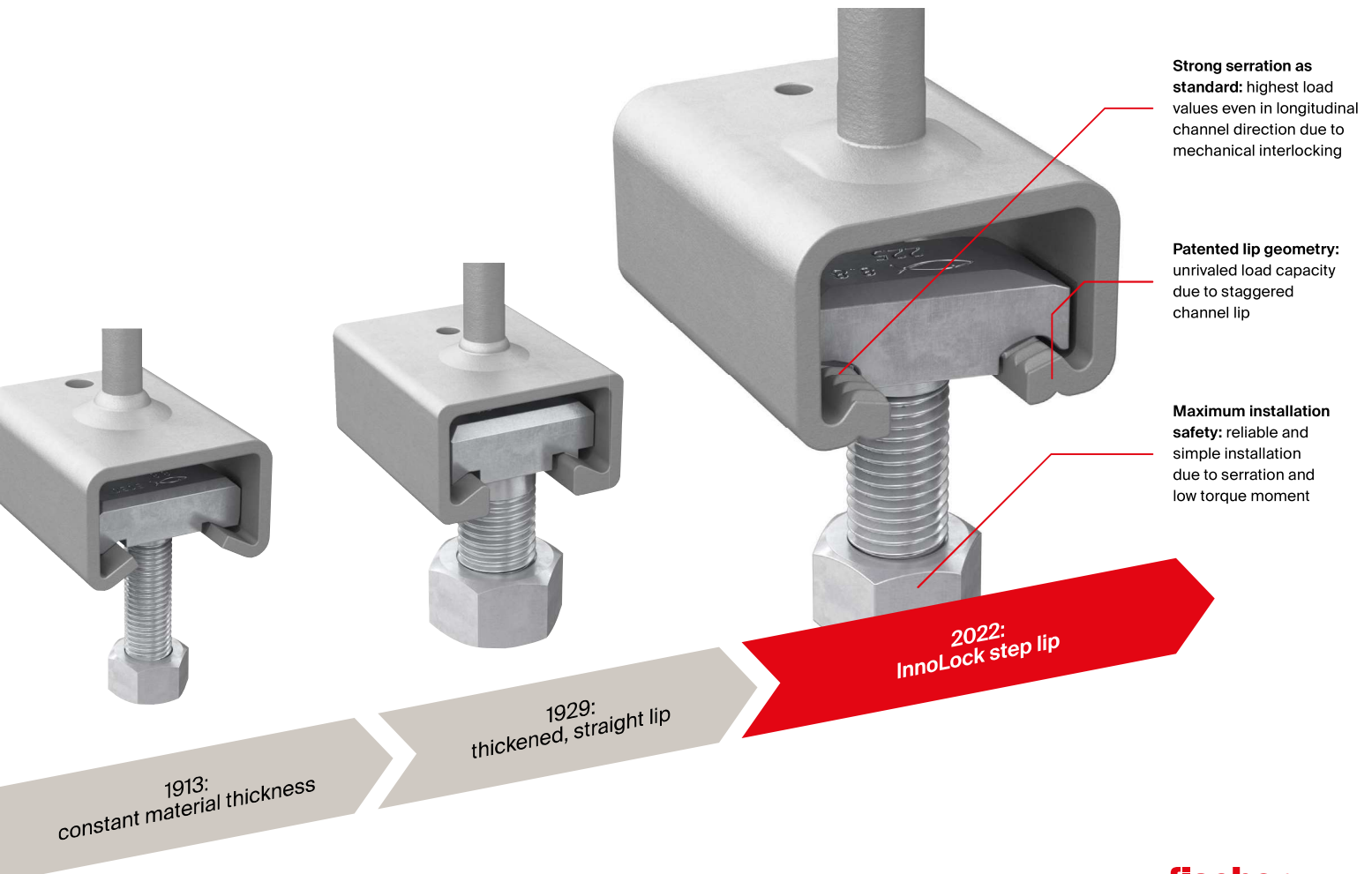


InnoLock FES. A new era of fastening.

Evolution in the construction industry requires new fastening methods. For the reliable and flexible installation of fixture plates, anchor channels are the technology of choice. Demanding construction projects have to withstand the highest loads. What counts here is uncompromising safety. For this purpose, fischer developed the InnoLock FES – the safest anchor channel in the world.

The InnoLock FES is based on a newly developed and patented production process with low energy input. Optimized material usage reduces resources, which further optimizes the ecological footprint of the complete construction. At the same time, performance has been increased: the unrivaled dimensional stability and material strength of the anchor channel are second to none.

Evolutionary geometry.



Why settle for less?

Assembly in no time

The InnoLock FES reduces the installation costs, for example for element facade applications. Low installation torques are sufficient to permanently secure highest loads. This makes installation faster and safer.

The newly developed sealing solution reliably protects the serration of the channel from penetrating concrete slurry. The time-consuming, additional seal-taping of the channel at the construction site is no longer necessary. The sealing was designed so that it can be easily removed before installing the T-Bolts.

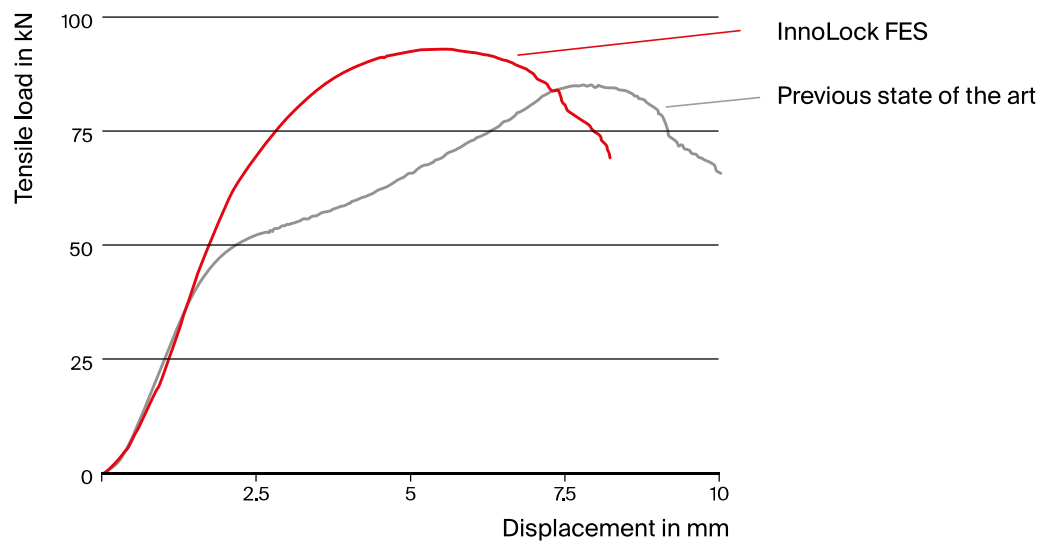
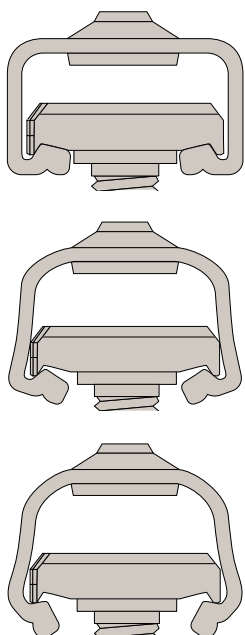
New spheres of safety

The patented, innovative geometry of the T-Bolt provides noticeable installation feedback. Due to the fully serrated channel and the robust mechanical interlocking fixtures remain secure permanently.

Perfectly matching system components guarantee load transfer at the highest level – from the fixture plate into the concrete substrate. Thanks to the full-surface hot-dip galvanizing, the channel is also reliably protected against corrosion even on cutting edges.

Withstands all promises.

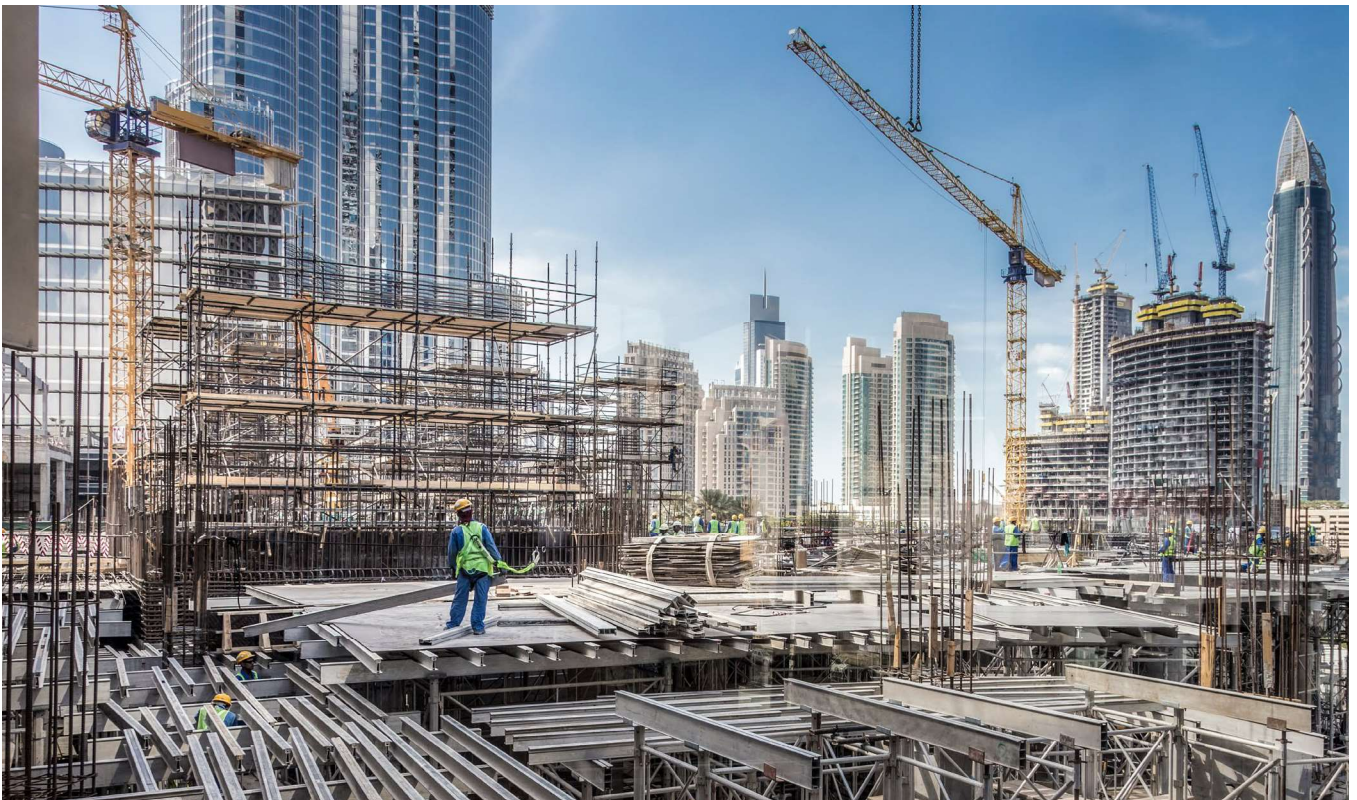
We at fischer have developed an innovative and balanced Cast-In Channel System. The patented staggered channel lip and the design of the T-Bolts together ensure maximum tensile, shear and longitudinal loads together with user-friendly and safe installation.



InnoLock FES: unmatched load capacity for tensile loads

Unlimited applications.

The InnoLock FES perfectly fits into the established portfolio of fischer Cast-In Channels. This allows straightforward realization of construction projects with a wide variety of requirements using systems and services from a single source.



Reliably the best choice



ETA-22/0035 for serrated anchor channels



Patented staggered lip



Patented production process



3D load bearing through robust serration

The benefits at a glance

- Permanent secure fastening: Serration as standard, innovative channel lip and serrated T-Bolt geometry with high fitting accuracy
- Uncompromising safety: highest load values in all load directions
- Reduced installation effort: fast preparation and installation on site
- Versatile use: as Cast-In Channel in concrete or as a mounting channel without anchors in steel construction



*Permanent
secure fastening*

*Highest load values
in all load directions*

*Fast and secure
installation*

Versatile use

*Low amount of material
and energy input*

Dealer:

www.fischer-international.com



fischer stands for

Fixing Systems
Automotive
fischertechnik
Consulting
Electronic Solutions