

fischer 

Strong Undercut Anchor FSU.
The anchoring system for
extreme safety and load
requirements.



Strong Undercut Anchor FSU.

For extreme load and safety requirements.



The DMC (DataMatrix-Code) for **unique identification and readout of product data** offers the possibility for flexible and exact data information and storage before and after installation. The DMC can be scanned using the fischer PRO app.

The perfect form fit in the undercut guarantees the **absorption of high loads** (head bolt theory) for applications with the highest level of safety.

The plastic element of the FSU prevents the anchor from falling out of the drill hole and allows **easy and safe overhead installation**.

The setting depth marking ensures a quick visual installation check and provides additional **safety and installation convenience**.



Six robust cutting teeth and the principle of self-undercutting enable **fast setting in the concrete and thus simple installation**.

The low spreading forces of the FSU allow **small edge and axial distances** and offer **maximum flexibility** in all applications.

The plastic cap **prevents the thread from being damaged** during installation.

Advantages at a glance

- Approved according to ETA Option 1 for high safety requirements.
- The head bolt theory principle allows for maximum tensile loads for mechanical systems.
- The perfect matched components enable highest shear loads.
- Fast and complete dismantling with the disassembly tool FSU-DT.

Functionality

- The FSU is suitable for pre-setting installation, the FSU-P is suitable for push-through installation.
- First, the drill hole is created with the collar drill FSU-SD.
- After cleaning, the anchor is inserted with the setting tool FSU-ST. The anchor cuts itself the undercut, creating a positive connection.
- The setting depth markings on the anchor and setting tool indicate when the anchor is set correctly.
- With the disassembly tool FSU-DT, the anchor can be removed quickly and completely.

Building materials



Cracked concrete



Non-cracked concrete

Certificates



ETA 22/0674,
for cracked concrete



fire resistance
class
R120



Seismic C2

Applications in heavy duty steel construction



Industry



Walkways



Power plants



Oil and gas



Infrastructure



Heavy duty steel construction

Design methods compared: Undercut vs. bolt anchor.

Applications in heavy duty steel construction require systems that match extreme demands on safety. When designing according to the **anchor theory** the loads in the anchors are transferred into the concrete and depend on the concrete's tensile strength to resist the load. In order to reduce these load values, applying the **headed bolt theory**, using a higher safety coefficient, has proven effective.

The following example, comparing the FSU undercut anchor with the FAZ II Plus expansion anchor, demonstrates the difference in load values:

Parameters: Anchor: FSU 12 x125/30 vs. FAZ II Plus 12/50, $h_{ef}=125\text{mm}$, C20/25 cracked concrete

FSU

$$N_{Ed} \leq N_{Rd,c} \leq \frac{N_{Rk,c}}{\gamma_{Mc}}$$

$$N_{Rk,c}^0 = k_1 \times \sqrt{f_{ck}} \times h_{ef}^{1,5} = 8,9 \times \sqrt{20 \frac{\text{N}}{\text{mm}^2}} \times \frac{(125\text{mm})^{1,5}}{1000 \frac{\text{N}}{\text{kN}}} = 55,63\text{kN}$$

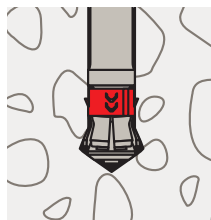
$$N_{Rd,c} = \frac{N_{Rk,c}}{\gamma_{Mc}} = \frac{55,63\text{kN}}{1,5} = 37,08\text{kN}$$

FAZ II Plus

$$N_{Ed} \leq N_{Rd,c} \leq \frac{N_{Rk,c}}{\gamma_{Mc}}$$

$$N_{Rk,c}^0 = k_1 \times \sqrt{f_{ck}} \times h_{ef}^{1,5} = 7,7 \times \sqrt{20 \frac{\text{N}}{\text{mm}^2}} \times \frac{(125\text{mm})^{1,5}}{1000 \frac{\text{N}}{\text{kN}}} = 48,13\text{kN}$$

$$N_{Rd,c} = \frac{N_{Rk,c}}{\gamma_{Mc}} = \frac{48,13\text{kN}}{1,5} = 32,08\text{kN}$$



With **positive connection**, the anchor geometry adapts to the shape of the drill hole. The anchor makes maximum use of the load-bearing capacity of the substrate. There are no or only low expansion forces.



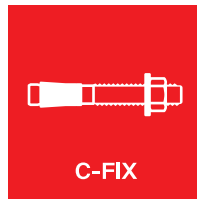
With **friction locking**, the expansion part of the anchor is pressed against the wall of the drill hole. The tensile forces are absorbed by friction.

C-FIX Online and Offline.

For the dimensioning of steel and bonded anchors as well as frame fixings in steel-reinforced concrete and masonry.

Advantages

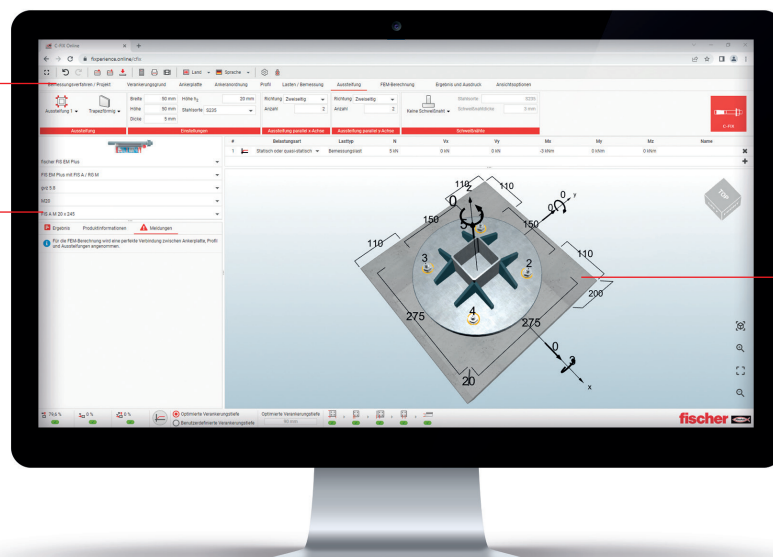
- Dimensioning of injection systems in masonry
- Dimensioning under dynamic influences - threshold or alternating loads
- Dimensioning with seismic conditions (earthquakes)
- Dimensioning under fire exposure
- Realistically calculation by considering the anchor stiffness and the base plate stiffness, including profiles and stiffeners.



For verification on the basis of European Technical Evaluations (ETA) for anchorages with plugs. Additional verification according to "ENSO" with the extended dimensioning models according to fib. Integration of the European dimensioning principles, such as ETAG 001 Annex C, TR 029 and DIN EN 1992-4. In addition, C-FIX offers the possibility to select the force and measurement units individually.

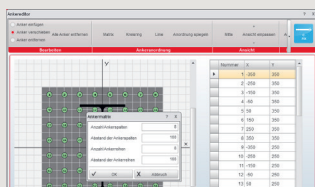
Input bar structured in a chronologically logical way

Product information such as approvals/evaluations and error notes

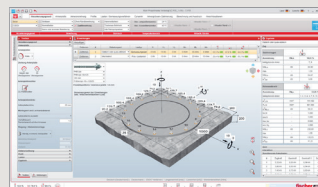


3D input graphic

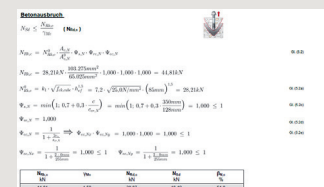
Offline and Online program features



Anchor editor for free anchor arrangements according ENSO



Dimensioning and display of the steel connection plate according to FE method

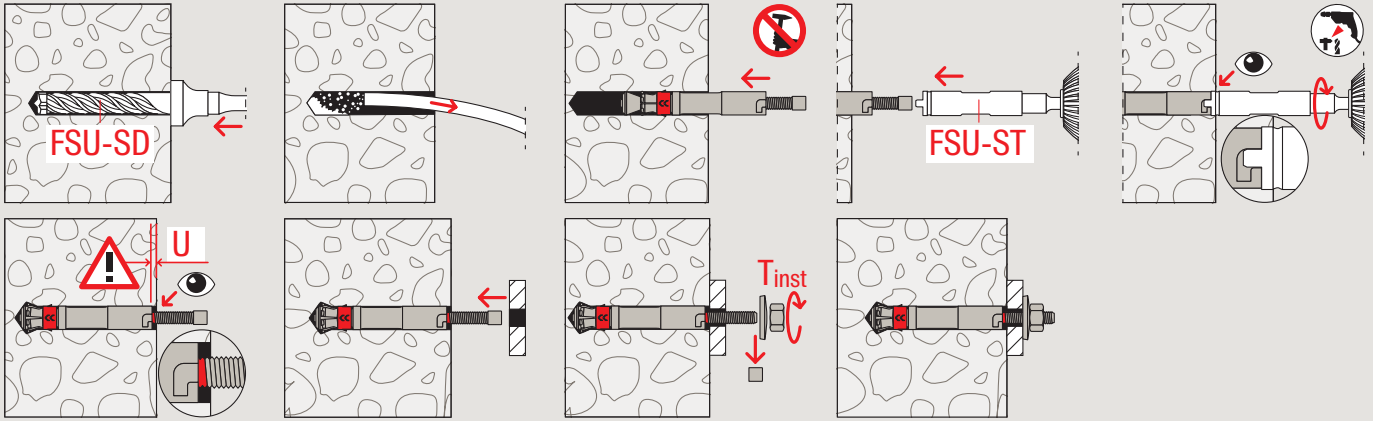


Auditable and detailed printout with reference to the respective regulation

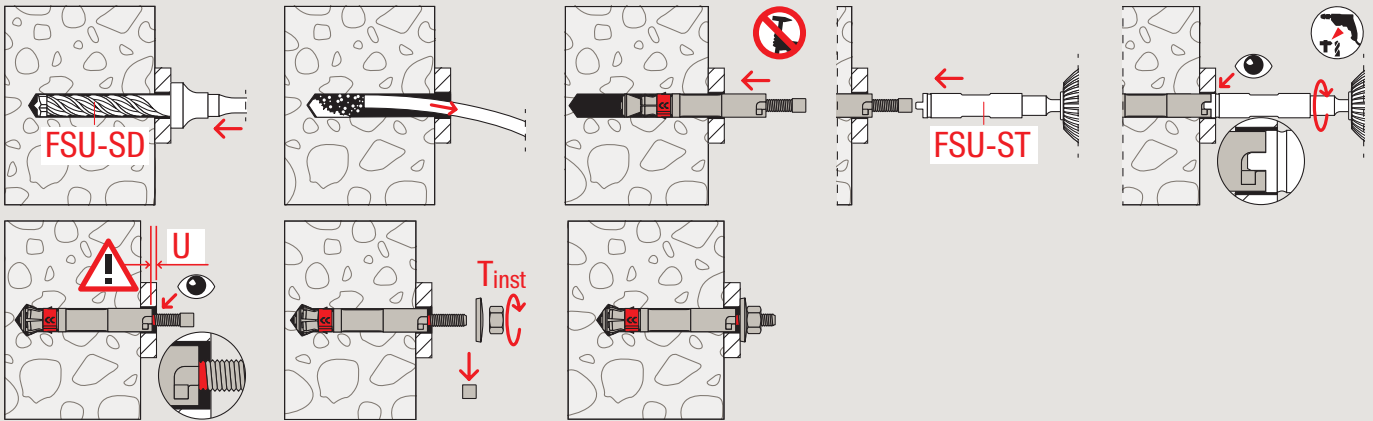
C-FIX is available as an online or offline version. Further information can be found under the following link:
www.fischer-international.com/en/service/planning-aids/fixperience

Installation

Pre-setting anchor FSU

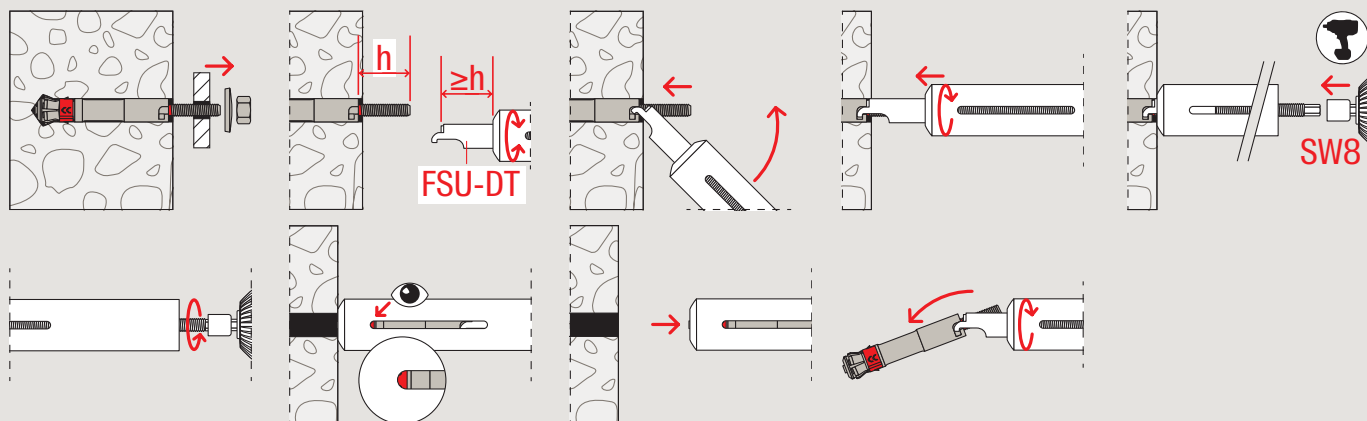


Push-through anchor FSU-P

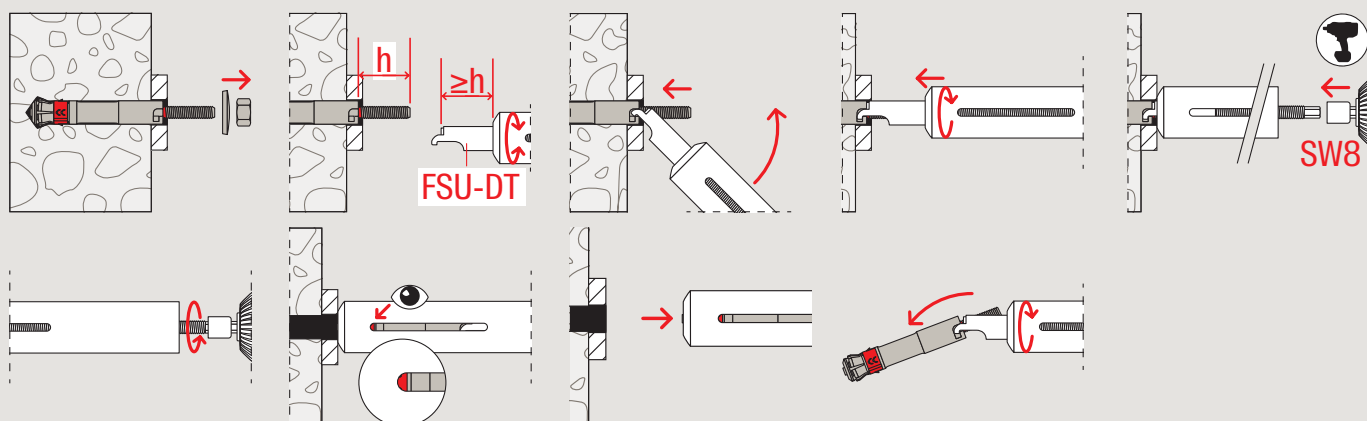


Disassembly

Disassembly pre-setting anchor FSU



Disassembly push-through anchor FSU-P



Performance characteristics and system components.

Always on the safe side with FSU:



Approved for seismic applications of the performance categories C1 and C2.

Approval for sprinkler systems:



The FSU complies with the VdS CES guidelines for sprinkler systems, planning and installation when using the corresponding approval (ETA 22/0674).

Safe even in extreme situations:



Safety when it counts! Especially load-bearing steel constructions must not fail in the event of a fire. The FSU has proven its performance even under fire load. The ETA also allows dimensioning up to fire resistance class R 120.

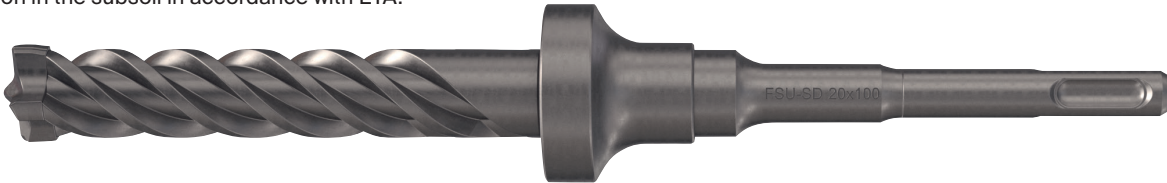
Keeping track of things:



The DMC (DataMatrix-Code) for unique identification and readout of product data on the anchor offers the possibility for flexible and exact data transparency and storage before and after installation.

Stop drill FSU-SD

- The stop drill FSU-SD is specially designed for the length of the undercut anchor FSU and thus ensures simple and reliable drill hole creation in the subsoil in accordance with ETA.



Setting tool FSU-ST

- The setting tool FSU-ST is used for the simple and quick installation of undercut anchors FSU according to ETA.

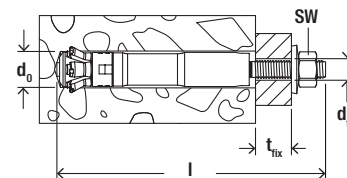


Disassembly tool FSU-DT

- The FSU-DT disassembly tool is used for easy uninstallation of undercut anchors FSU.



Assortment

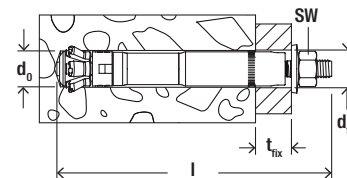


Strong Undercut Anchor FSU



FSU

Item	Item no.	Ap- pro- val ETA	Seismic- Approval	Drill diameter d_0 [mm]	Drill hole diameter in fixture $d_1 \leq$ [mm]	Fixture thickness $t_{fix} \leq$ [mm]	Anchor length l [mm]	Width across nut SW [mm]	Required drill bit FSU-SD	Required setting tool	Sales unit [pcs]
FSU M10x100/20	567778	●	C1 / C2	20	12	20	150	17	20 x 100	FSU-ST M10	10
FSU M12x125/30	567782	●	C1 / C2	22	14	30	190	19	22 x 125	FSU-ST M12	10
FSU M12x125/50	567786	●	C1 / C2	22	14	50	210	19	22 x 125	FSU-ST M12	10



Strong Undercut Anchor FSU-P



FSU-P

Item	Item no.	Ap- pro- val ETA	Seismic- Approval	Drill diameter d_0 [mm]	Drill hole diameter in fixture $d_1 \leq$ [mm]	Fixture thickness t_{fix} [mm]	Anchor length l [mm]	Width across nut SW [mm]	Required drill bit FSU-SD	Required setting tool	Sales unit [pcs]
FSU-P M10x100/20	567780	●	C1 / C2	20	21	10-20	150	17	20 x 120	FSU-ST M10	10
FSU-P M12x125/30	567784	●	C1 / C2	22	23	12-30	190	19	22 x 155	FSU-ST M12	10
FSU-P M12x125/50	567788	●	C1 / C2	22	23	12-50	210	19	22 x 175	FSU-ST M12	10

Assortment

Stop drill FSU-SD



FSU-SD

Item	Item no.	fits anchor		Sales unit [pcs]
		pre-setting anchor	push-through anchor	
FSU-SD 20x100	567793	FSU M10x100/20	-	1
FSU-SD 20x120	567794	-	FSU-P M10x100/20	1
FSU-SD 22x125	567795	FSU M12x125/30; FSU M12x125/50	-	1
FSU-SD 22x155	567796	-	FSU-P M12x125/30	1
FSU-SD 22x175	567797	-	FSU-P M12x125/50	1

Setting tool FSU-ST



FSU-ST

Item	Item no.	fits anchor		Sales unit [pcs]
		pre-setting anchor	push-through anchor	
FSU-ST M10	568881	FSU M10	FSU-P M10	1
FSU-ST M12	568882	FSU M12	FSU-P M12	1

Disassembly tool FSU-DT



FSU-DT

Item	Item no.	fits anchor		Sales unit [pcs]
		pre-setting anchor	push-through anchor	
FSU-DT M10	568879	FSU M10	FSU-P M10	1
FSU-DT M12	568880	FSU M12	FSU-P M12	1

Required hammer drill

Drill chuck	SDS Plus
Hammer drilling RPM	600-1800 rpm
Hammer impact energy	2-5 J

Loads

Strong Undercut Anchor FSU

Permissible loads of a single anchor¹⁾ in normal concrete of strength class C20/25.
For the design the complete current assessment ETA-22/0674 of 26.07.2023 has to be considered.

Type	Material/ surface ²⁾	Effective anchorage depth h_{ef} [mm]	Minimum member thickness h_{min} [mm]	Installation torque $T_{inst,max}$ [Nm]	Cracked concrete				Non-cracked concrete			
					Permissible tension (N_{perm}) and shear loads (V_{perm}); minimum spacing (s_{min}) and edge distances (c_{min}) with reduced loads				Permissible tension (N_{perm}) and shear loads (V_{perm}); minimum spacing (s_{min}) and edge distances (c_{min}) with reduced loads			
					$N_{perm}^{3)}$ [kN]	$V_{perm}^{3)}$ [kN]	$s_{min}^{3)}$ [mm]	$c_{min}^{3)}$ [mm]	$N_{perm}^{3)}$ [kN]	$V_{perm}^{3)}$ [kN]	$s_{min}^{3)}$ [mm]	$c_{min}^{3)}$ [mm]
FSU M10 x 100	gvz	100	170	40	14.3	15.3	80	80	21.0	15.3	80	80
FSU M12 x 125	gvz	125	220	80	19.0	21.8	90	90	31.4	21.8	90	90
FSU-P M10 x 100	gvz	100	170	40	14.3	37.7	80	80	21.0	37.7	80	80
FSU-P M12 x 125	gvz	125	220	80	19.0	49.3	90	90	31.4	49.3	90	90

¹⁾ Design according to EN 1992-4:2018 (for static resp. quasi-static loads). The partial safety factors for material resistance as regulated in the ETA as well as a partial safety factor for load actions of $\gamma_t = 1.4$ are considered. As a single anchor counts e.g. an anchor with a spacing $s \geq 3 \times h_{ef}$ and an edge distance $c \geq 1.5 \times h_{ef}$. Accurate data see ETA.

²⁾ For material details see ETA.

³⁾ In the case of combinations of tension and shear loads, bending moments with reduced or minimum spacing and edge distances (anchor groups), the design must be carried out in accordance with the provisions of the complete ETA and the provisions of the EN 1992-4:2018. Assumption $t_{in} = 12$ mm; with $t_{in} > 12$ mm the V_{perm} values increase for FSU-P. We recommend using our anchor design software C-FIX.

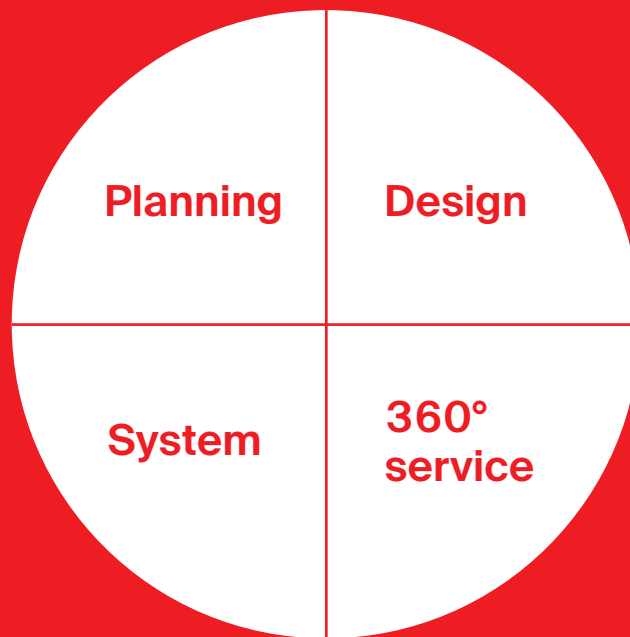
From planning to completion.

Planning safe and efficient constructions

All projects have one thing in common: They start with the planning and the proven dimensioning according to anchor theory and head bolt theory for safe anchoring in concrete. With the fischer solutions there are no longer limits to your planning.

Design - Safe and reliable with the fischer design software FiXperience

FiXperience is modular in design and can be used for a variety of applications. Due to the intuitive interface, anchorages and fixings can be dimensioned easily and flexibly.



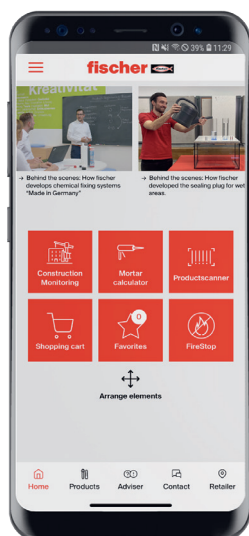
System – The right solution for every application

With the fischer systems, consisting of injection mortar and the matching accessories, you are optimally equipped for every application. From the drill hole creation to completion. The fischer range of drill bits together with the fischer dispenser complete the package.

360° service

With fischer, no customer is left alone. No matter how difficult, unique or impossible the task seems, with our 360° service package you will find the right solution for your needs. We will support you before, during and after the completion of your project.

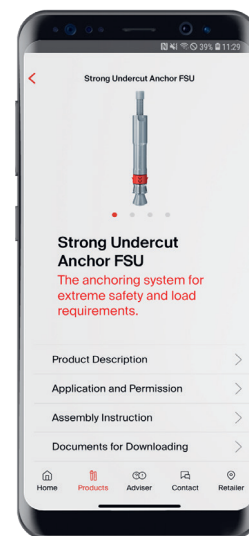
DMC in the fischer PRO app



Information, technical data, etc. can be viewed with the fischer PRO app both before and after installation.



To do this, navigate to the tile "Productscanner" and scan the DMC.



You will then see all the information about the scanned product. In the download area you can download the ETA and other data.

fischer PRO. The mobile fixing expert as an app.

Product advisor



Find the right fixing solution for your application with just a few clicks.

Productscanner

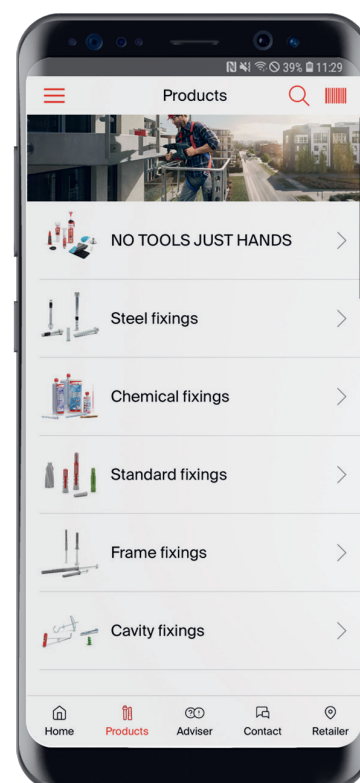


Scan your product and receive all relevant information. For example, for assembly.

Live-Chat



Benefit from the many years of practical experience of fischer engineers and technicians in direct contact.





FiXperience. Safe and reliable.

The fischer design Software FiXperience gives you safe and reliable support in dimensioning your projects whether you are a planner, structural engineer or craftsman. FiXperience is set up modularly

and useable for a variety of applications. The program includes an engineering software with special application modules:



C-FIX

The anchor design program for steel and bonded anchor in concrete, as well as injection systems for masonry. Now with the new FEM design tool for the realistic design of anchorages.



MORTAR-FIX

To determine the injection resin volume for bonded anchors in concrete and masonry.



WOOD-FIX

For the calculation of on-rafter insulation systems and joints in structural timber engineering.



RAIL-FIX

For the design of fixings for railings on reinforced concrete slabs and staircases.



INSTALL-FIX

For the design and dimensioning of MEP installation systems.



FACADE-FIX

For the design of façade fixings with timber sub-structure.



REBAR-FIX

For the design of post-installed rebars in reinforced concrete.



CHANNEL-FIX

For the design of cast-in channels and inserts.



Electronic planner folder

All important documents and records from fischer in one program.

Register on the [myfischer portal](#) to use **FiXperience online** or **download FiXperience** for free.

fischer Service.

Our 360° service to you.

From software solutions, to training, to personal consulting. As a reliable partner, we are always happy to assist you with words and deeds.



INSTALL-FIX in the design Software fiXperience

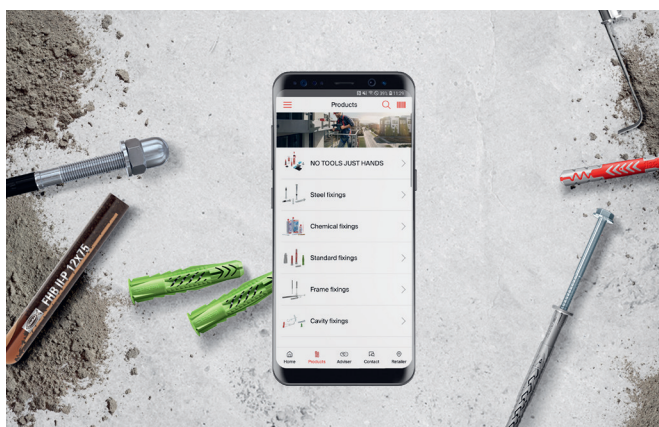
The app for the design of installation systems. In the INSTALL-FIX module, verifications can be conducted for eleven different assemblies with brackets, frames and channels. Alternatively, the design can be started by preselecting the desired installation system. Design results or optionally the parts list can be output.

Test it now and download it for free:
www.fischer-international.com/fixperience



fischer PRO. The Mobile Guide to Fixing Solutions for Professionals.

The fischer PRO App is a mobile guide to fixing solutions offering professionals the opportunity to quickly and easily find out about products, identify the right fixing solution through the digital guide and/or find a local dealer. Download now from Apple App Store or Google Play Store.



Dealer:

www.fischer-international.com



fischer stands for

Fixing Systems
Automotive
fischertechnik
Consulting
Electronic Solutions

fischerwerke GmbH & Co. KG
Klaus-Fischer-Straße 1 · 72178 Waldachtal
Germany
T +49 7443 12 - 0
www.fischer-international.com · info@fischer.de
