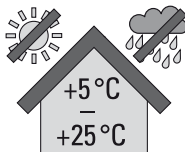


FIS P 300 T



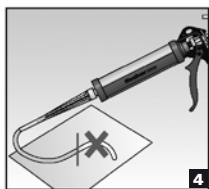
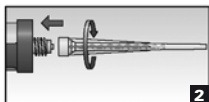
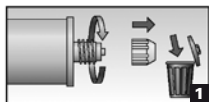
DEUTSCH	4
ENGLISH	5
FRANÇAIS	6
NEDERLANDS	7
MAGYAR	8
SLOVENSKY	9
SLOVENŠČINA	10
HRVATSKI	11
ITALIANO	12
ESPAÑOL	13
PORTUGUES	14
ΕΛΛΗΝΙΚΑ	15
POLSKI	16
ČESKY	17
中文	18
日本語	19
한국어	20
ROMÂNĂ	21
БЪЛГАРСКИ	22
РУССКИ	23
EESTI KEEL	24
LIETUVIŠKAI	25
LATVIEŠU	26
УКРАЇНСЬКА	27
ҚАЗАҚ	28

FIS P 300 T

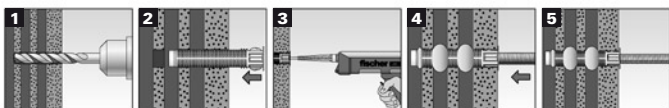


- Ⓓ Mörtel kühl und trocken lagern.
- Ⓔ Store mortar in a cool dry place.
- Ⓕ Conserver la résine dans un endroit frais et sec.
- Ⓖ Mortel koel en droog bewaren.
- Ⓗ A habarcs száraz és hűvös helyen tárolandó.
- Ⓙ Malto skladujte v chlade a v suchu.
- Ⓚ Malto hraniti na hladnem in suhem.
- Ⓜ Žbuku skladištite na hladnom i suhom mjestu.
- Ⓝ Conservare la resina in luogo fresco e asciutto.
- Ⓔ Guardar el mortero en lugar fresco y seco.
- Ⓕ Armazenar a argamassa em local fresco e seco.
- Ⓖ Αποθηκεύετε το κονίαμα σε ψυχρό και στεγνό μέρος.
- Ⓕ Zaprawę przechowywać w suchym i chłodnym miejscu.
- Ⓒ Malto skladujte v chladnu a v suchu.
- Ⓒ 把砂浆储存在阴凉干燥的地方。
- Ⓒ インジェクションモルタルは低温で乾燥した場所に保存してください。
- Ⓝ 모르터는 차고 건조 한 곳에 보관한다.
- Ⓒ Mortarul trebuie depozitat la loc uscat și rece.
- Ⓒ Сохраняйте раствора на холодно и сухо място.
- Ⓒ Раствор хранить в сухом, прохладном месте.
- Ⓒ Hoida mörti jahedas ja kuivas kohas.
- Ⓒ Skiedinį laikyti vėsoje ir sausoje vietoje.
- Ⓒ Uzglabāt javu vēsā un sausā vietā.
- Ⓒ Зберігати в сухому та прохолодному місці.
- Ⓒ Льнімді кђрфак жсне салќын жерде саќтанъыз.

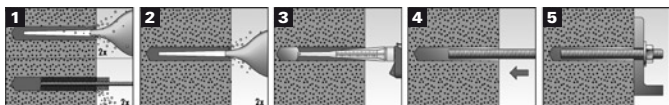
A



B I



B II



fischer Injection Mortar FIS P 300 T

A Preparing the cartridge

1. Remove and dispose of the cap.
2. Screw static mixer into position. **The mixer spiral must be clearly visible in the static mixer.** Never use without static mixer!
3. Place the cartridge in the applicator gun.
4. Press approx 10 cm of material out **until the resin mortar comes out evenly grey in colour.** Mortar which is not grey in colour will not cure and must be disposed of.

After finishing work, leave the static mixer attached to the cartridge.

Important: If the processing time is exceeded, use a new static mixer and if necessary remove encrusted material in the cartridge mouth.

Installation in solid and perforated brick

B I Installation with anchor sleeve

Suitable for: vertically perforated brick, solid brick, perforated sand-lime brick, solid sand-lime brick, hollow blocks, hollow pumice brick, hollow floors and other perforated brick

1. Drill hole. Observe the correct hole diameter and depth.
**With solid materials, clean out the hole as follows:
blow out at least twice, brush out twice, and blow out twice again.
Badly cleaned hole = reduced load-bearing capacity!**
 2. Insert anchor sleeve into hole until flush with surface.
 3. Fill with mortar from the bottom of the hole. Avoid bubbles.
 4. Press anchoring element down to the bottom of the sleeve, turning it slightly while doing so.
 5. Do not apply load to the anchor **until after the prescribed curing time (see table 1).**
- For accessories and installation data see last pages.

B II Installation without anchor sleeve

Suitable for: natural stone, solid sand-lime brick, solid pumice brick and other solid materials. In plastered masonry, we recommend using an anchor sleeve.

1. Drill hole. Observe the correct hole diameter and depth.
2. Clean the hole thoroughly:
**Blow out at least twice, brush out twice, and blow out twice again
Badly cleaned hole = reduced load-bearing capacity!**
3. Fill with mortar starting from the bottom of the hole (approx. 2/3 of hole).
4. Press anchoring element down to the bottom of the hole, turning it slightly while doing so. After inserting the anchoring element, excess mortar must emerge from the mouth of the hole. If no mortar appears at the surface, remove the anchoring element immediately and inject more mortar.
5. Do not apply load to the anchor **until after the prescribed curing time (see table 1).**

Important: Changes in colour may occur depending on the material. Please test in a suitable location beforehand.

Table I Processing and curing times

System temperature (mortar) min. +5 °C	Working time / processing time	Temperature in anchoring material	Curing time*
+ 5 °C	15 min.	± 0 °C to + 5 °C	6 h
+ 10 °C	8 min.	+ 5 °C to + 10 °C	3 h
+ 20 °C	5 min.	+ 10 °C to + 20 °C	2 h
+ 30 °C	3 min.	+ 20 °C to + 30 °C	60 min.
		+ 30 °C to + 40 °C	30 min.

* In damp materials, the curing times should be doubled.