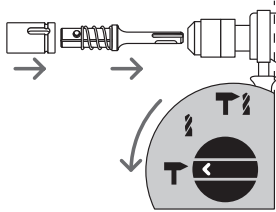


Operating instructions

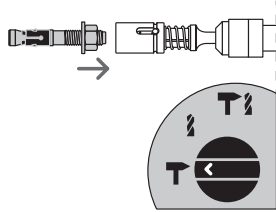
Bolt anchor setting tool FA-ST II.

The setting tool is suitable for the push-through installation of bolt anchors (such as FAZ II, FBZ, FBN II, EXA) in combination with a hammer drill.

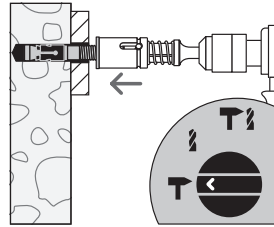
It is only suitable for drill hammers with an SDS Plus adapter. Do not use in conjunction with SDS Plus/SDS Max adapters.



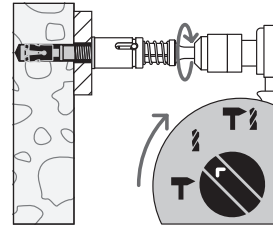
Insert the FA-ST II setting tool into the SDS Plus adapter on the hammer drill using the matching socket until it snaps securely into place. Switch the hammer drill over to impact function only.



Loosen the nut on the bolt anchor up to one thread turn, so that you will be able to tighten the bolt anchor again later on. Insert the bolt anchor into the setting tool. For floor installation, insert the anchor into the drill hole and drive in using the setting tool.



Drive the bolt anchor into the previously created drill hole with the setting tool fischer FA-ST II and the hammer drill, until the washer/hexagonal nut is up against the installation object/attachment.



Change the hammer drill over to rotation only and tighten the nuts. Then use a torque wrench to generate the defined torque.