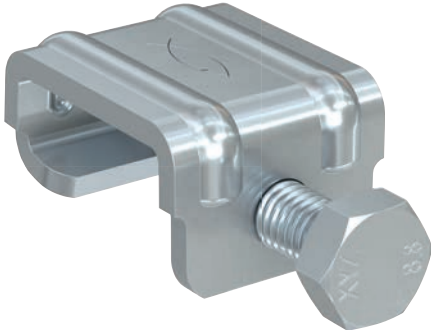


# Ventilation duct connector VDC

Connecting elements - Ventilation duct connector VDC



Flange connection of two rectangular ducts

8

## Applications

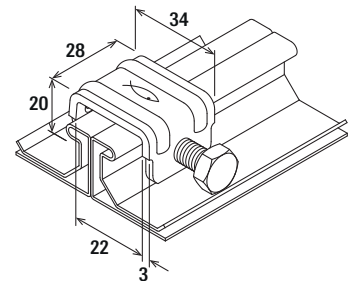
- Ventilation duct connector VDC for simple flange connection of large duct cross-sections and/or high pressure conditions.
- For use in dry interior areas.

## Advantages

- Easy to use.
- No drilling.
- High clamping effect.
- Ensures a firm connection of ducts.
- Reduces pressure losses in the ventilation duct systems.
- Reduces noise in the ventilation duct system.

## Properties

- Material: steel DD11 (material no. 1.0332) acc. to DIN EN 10111
- Zinc plating: electro zinc-plated



VDC

## Technical data

Item	Item no.	Bolt ø x length	Rec. installation distance [mm]	Sales unit [pcs]
VDC	568675	M8 x 20	200 - 300	50

For ventilation ducts with a side length of less than 800 mm, place a connector in the middle of each side.