

Universal bracket PUWS

Construction element - Universal bracket PUWS

4



3D-frame constructions

Applications

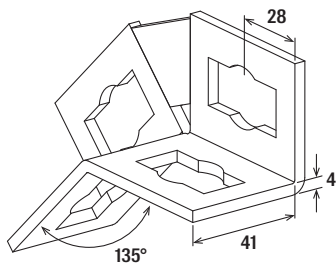
- Reinforcement of supporting structures for the push-through system.
- For use in dry interior areas.

Advantages

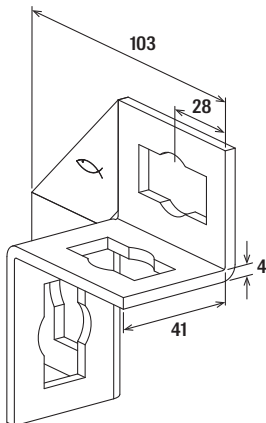
- The universal brackets for the connection of FUS channels gives a supporting structure, great stability and safety (we recommend using in pairs).
- Simple creation of channel constructions in connection with FUS channels and PFCN 41.
- Quick assembly by 90° rotation of the push-through connector PFCN 41 in the channel.

Properties

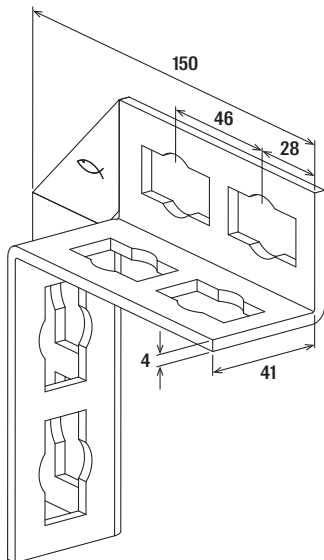
- Material: steel DD11 (material no. 1.0332) acc. to DIN EN 10111
- Zinc plating: electro zinc-plated



PUWS 2 x 2/135°



PUWS 2 x 2



PUWS 4 x 4

4

Technical data

Item	Item no.		Sales unit
			[pcs]
PUWS 2 x 2/135°	533731		10
PUWS 2 x 2	533733		10
PUWS 4 x 4	533734		8

See push-through connector PFCN for loads

Universal bracket PUWS zl

Construction element - Universal bracket PUWS zl



3D-frame constructions

10

Applications

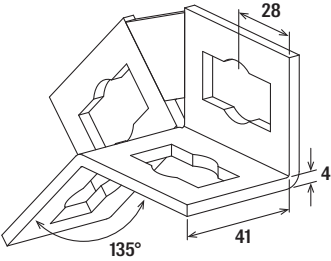
- Reinforcement of supporting structures for the push-through system.
- For indoor and outdoor application.

Advantages

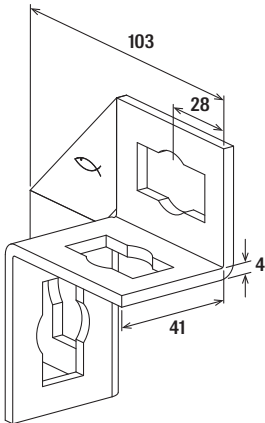
- The universal brackets for the connection of FUS channels gives a supporting structure, great stability and safety (we recommend using in pairs).

Properties

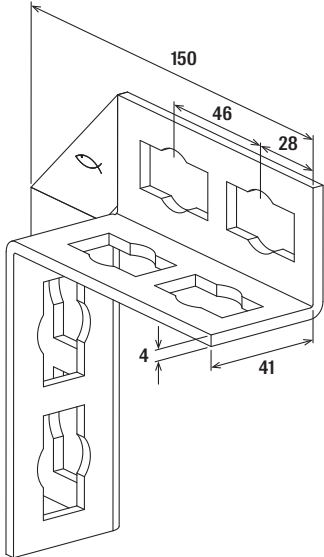
- Material: steel DD11 (material no. 1.0332) acc. to DIN EN 10111
- Coating: zinclamella



PUWS 2 x 2/135°



PUWS 2 x 2



PUWS 4 x 4

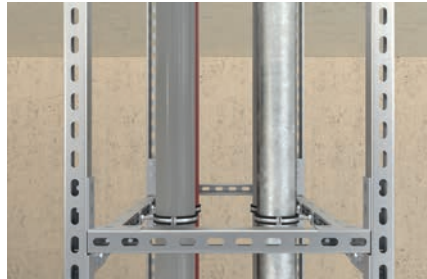
10 Technical data

Item	Item no.		Sales unit
			[pcs]
PUWS 2 x 2/135° zI	542708		10
PUWS 2 x 2 zI	542709		10
PUWS 4 x 4 zI	542710		8

See push-through connector PFCN 41 zI for loads

Universal bracket PUWS A4

Construction element - Universal bracket PUWS A4



3D-frame constructions

12

Applications

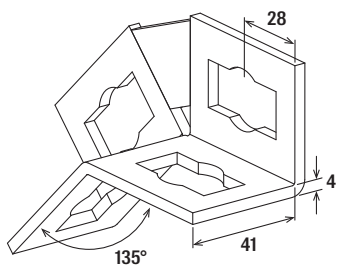
- Reinforcement of supporting structures for the push-through system.
- For indoor and outdoor applications and in environments with high stress to components due to corrosion.

Advantages

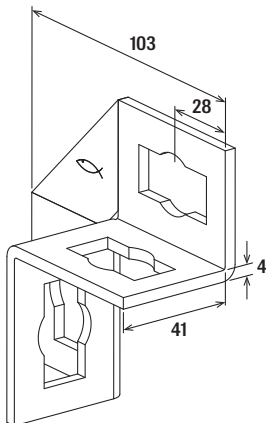
- The universal brackets for the connection of FUS channels gives a supporting structure, great stability and safety (we recommend using in pairs).

Properties

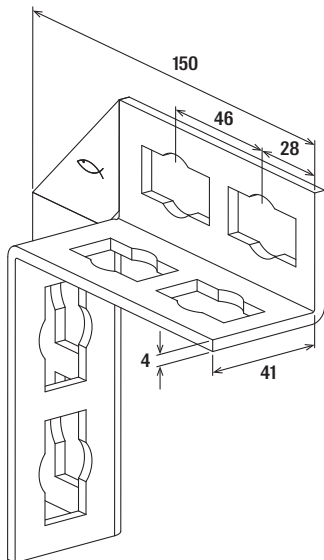
- Material: stainless steel A4 (material no. 1.4401)



PUWS 2 x 2/135°



PUWS 2 x 2



PUWS 4 x 4

Technical data

		Sales unit	
Item	Item no.		[pcs]
PUWS 2 x 2/135° A4	562835		10
PUWS 2 x 2 A4	562833		10
PUWS 4 x 4 A4	562834		8

See push-through connector PFCN 41 A4 for loads.