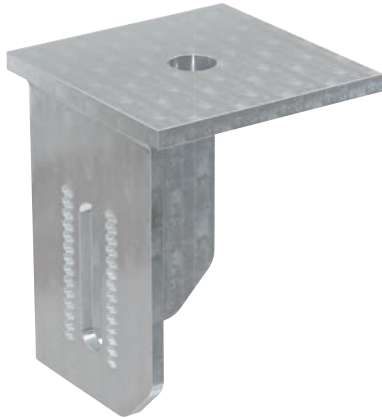


Transportation connector FMTC 90

The reusable connector for the transport of FMP mounting profiles



Transportation of profile structures

11

Applications

- Temporary use for the transportation of profile structures.
- For indoor and outdoor application.

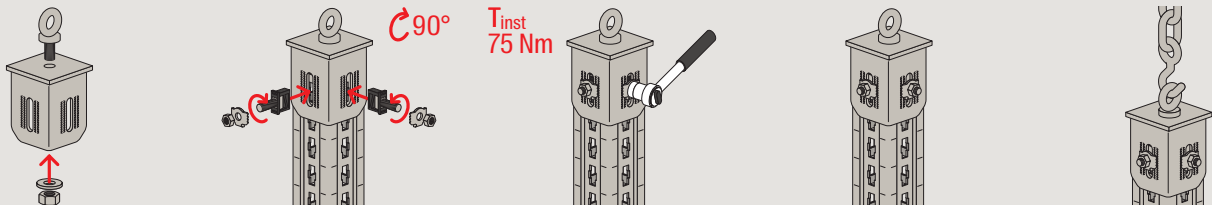
Advantages

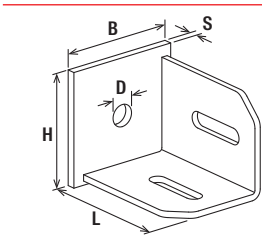
- The FMTC 90 transportation connector can be easily and securely mounted on the ends of the FMP 90 massive profile using two FMHB hammer-head push connectors and can also be dismantled again.
- The opening in the cover plate allows connection with threaded bolts or with eyebolts and nuts $\leq \varnothing 21$ mm as a mounting for transporting pre-assembled frame constructions.
- The robust construction of the FMTC 90 ensures long-lasting reusability as a transportation connector.

Properties

- Base plate: steel S355 (material no. 1.0976) acc. to DIN EN 10149-2
- Profile mount: steel S235JR (material no. 1.0038) acc. to DIN EN 10025-2
- Zinc plating: hot-dip galvanised acc. to DIN EN ISO 1461

FMTC 90





FMTC 90

Technical data

		Length L [mm]	Width B [mm]	Height H [mm]	Thickness S [mm]	Hole-Ø D [mm]	Sales unit
Item	Item no.						[pcs]
FMTC 90	568825	110	110	130	8.0	21	2