

Toggle plug KDS

Toggle plug KDS for secure fixing of pipes to trapezoidal metal sheet ceilings in stationary sprinkler systems



Sprinkler pipe on trapezoidal sheet metal ceiling

8

Applications

- The completely pre-assembled toggle plug KDS is used as a fixing element on trapezoidal metal ceilings.
- Suitable e.g. for fixing pipelines, mounting channels, ventilation ducts, power lines and lighting systems.
- Attachment of sprinkler pipelines to trapezoidal metal sheets: from ¾ to 1 ½" inch according to FM, max DN 50 (2") according to VdS.
- The permissible tensile load per fastening point for sprinkler lines on trapezoidal sheets is 0.8 kN, for other fastenings it is 1.0 kN.
- For use in dry interior areas.

Advantages

- The entire KDS range has VdS approval. The KDS 10 also has FM approval. This means that the KDS toggle plug guarantees objectively tested functional safety for use in sprinkler systems.
- Available in lengths from 100 to 500 mm (KDS 8) and 100 to 200 mm (KDS 10).
- The rotatable threaded rod allows easy height adjustment within the trapezoidal sheet. The threaded rod is secured against unintentional unscrewing.
- Complete with threaded rod, nut, washer, sealing washer and load distribution block. The sealing washer ensures a reliable seal on the trapezoidal metal sheet.

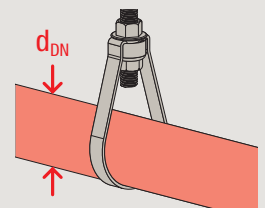
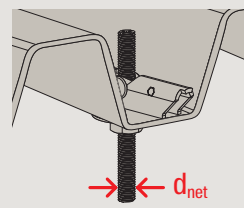
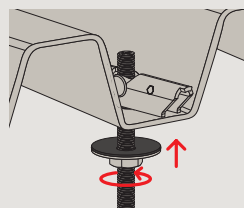
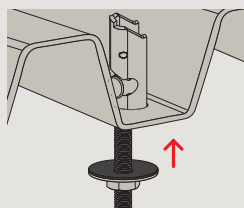
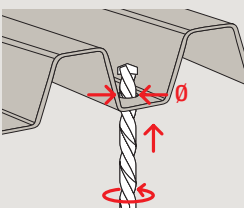
Properties

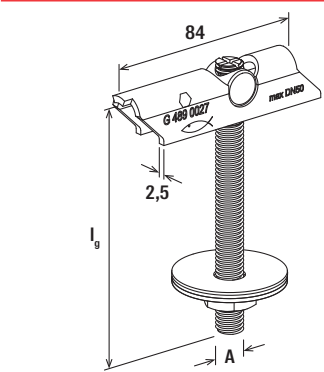
- Material: galvanised steel
- Material sealing washer: polyolefin-elastomere TPE-O
- Zinc plating: electro zinc-plated

Certificates



Installation KDS





KDS

Technical data

8

		Thread	Thread length	For sprinkler pipes acc. to VdS	dnet VdS	For sprinkler pipes acc. to FM	dnet FM	Drill hole Ø	Permissible tension load acc. to VdS/FM on trapezoidal metal sheet ≥ 0.63mm	Permissible tension load for non-VdS/ FM rel. applications on trap. metal sheet*	Max. recom. static load (centr. tension)	Sales unit
	Item no.	A	l _g [mm]					[mm]	[kN]	[kN]	N _{rec} [kN]	[pcs]
Item												
KDS 8x100	563859	M8	100	≤ DN 50 (2")	M8	–	–	22	0.8	1	8.00	50
KDS 8x200	563860	M8	200	≤ DN 50 (2")	M8	–	–	22	0.8	1	8.00	25
KDS 8x300	563861	M8	300	≤ DN 50 (2")	M8	–	–	22	0.8	1	8.00	25
KDS 8x500	563862	M8	500	≤ DN 50 (2")	M8	–	–	22	0.8	1	8.00	25
KDS 10x100	563863	M10	100	≤ DN 50 (2")	M10	DN 20 to DN 40 (¾" to 1½")	M10	25	0.8	1	8.50	25
KDS 10x200	563864	M10	200	≤ DN 50 (2")	M10	DN 20 to DN 40 (¾" to 1½")	M10	25	0.8	1	8.50	25

* Note on the maximal recommended static load (centric tension): Please consider the permissible load capacity of the trapezoidal metal sheet.