

Threaded rod brace connector S-VA

Threaded rod brace connector S-VA with maximum installation flexibility for seismic bracing with threaded rods



Bracing of frame construction with threaded rods

7

Applications

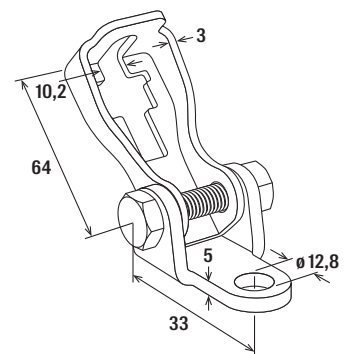
- For bracing of new as well as already installed frame constructions with threaded rods M10.
- For use in dry interior areas.

Advantages

- The design of the threaded rod brace connector S-VA allows a variable fixation at angles between 30° and 60° for a flexible adaptation to new and already existing construction.
- The design of the bracing element allows easy and quick insertion of a pre-mounted threaded rod with nut.
- The possibility to mount two bracing elements on top of each other offers the option to clamp the same point in different directions.

Properties

- Material bracket: steel S275JR (material no. 1.0044) acc. to DIN EN 10025-2
- Material supporting plate: steel S355MC (material no. 1.0976) acc. to DIN EN 10149-2
- Screw: M10x45, strength class 8.8, electro zinc-plated
- Nut: M10, strength class 8, electro zinc-plated



S-VA

Technical data

Item	Item no.	For profile	Sales unit
			[pcs]
S-VA	552360	FUS, FLS	10