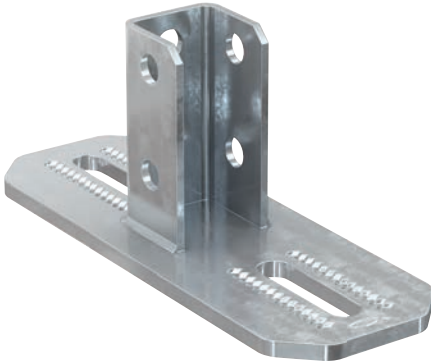


# System connector FMA-FUS

The system connection of FMP massive profiles and FUS mounting channels



Multidimensional channel structures

## Applications

- Construction of multidimensional profile structures.
- Constructing variable supporting structures from profiles.
- For indoor and outdoor application.

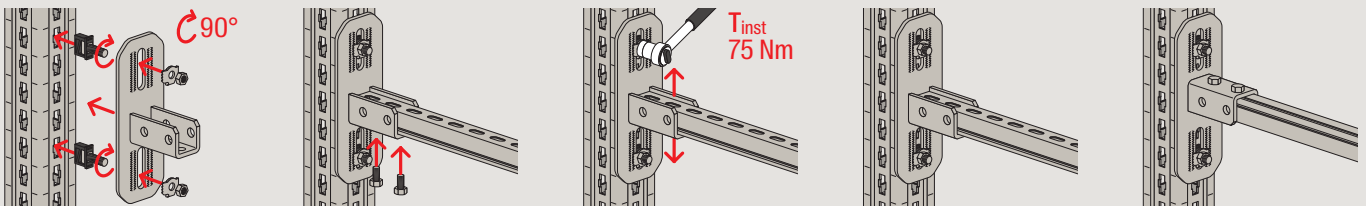
## Advantages

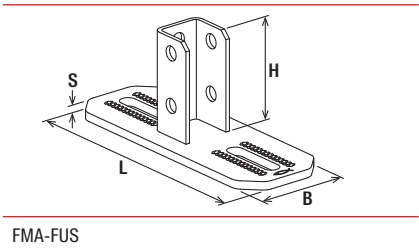
- The FMA-FUS system connector, when used as a saddle flange, allows the mounting of FUS mounting channels in various heights by means of screw connections with the FCN Clix P channel nut.
- The design of the FMA-FUS system connector with long slots and grating to match the FMHB hammer-head push connector enables optimum adjustment of the structure and simplifies the assembly process.
- The strong construction of the FMA-FUS system connector allows optimum transmission of the applied loads in the application as an angle.

## Properties

- Base plate: steel S355 (material no. 1.0976) acc. to DIN EN 10149-2
- Profile mount: steel S235JR (material no. 1.0038) acc. to DIN EN 10025-2
- Zinc plating: hot-dip galvanised

## Installation FMA-FUS





Technical data

		Length L [mm]	Width B [mm]	Height H [mm]	Thickness S [mm]	Sales unit
Item	Item no.					[pcs]
FMA-FUS	568824	250	90	95	8.0	6