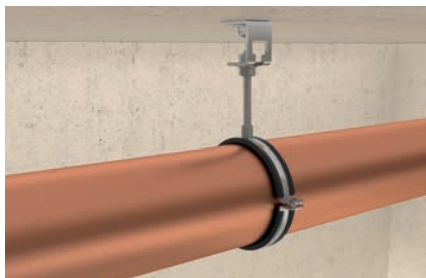


# Support hanger AHB

Support hanger AHB for the fixing and height regulation of pipe clamps



Height adjustable pipe installation

9

## Applications

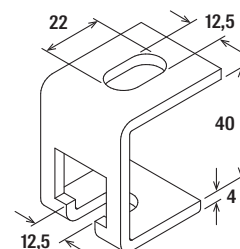
- Component for height adjustment.
- A washer should be used when using size M8 threaded rods.
- For use in dry interior areas.

## Advantages

- The seat of the support hanger allows subsequent height regulation at any time.
- The base plate's long slot allows the support hanger to be easily aligned.
- The perforated opening means that a component can be simply hung and adjusted using a threaded rod and nut.
- Suitable for threaded rods M8, M10 and M12.

## Properties

- Material: steel DD11 (material no. 1.0332) acc. to DIN EN 10111
- Zinc plating: electro zinc-plated



AHB

## Technical data

Item	Item no.	For thread	Max. recom. static load (centr. tension) $N_{rec}$ [kN]	Sales unit [pcs]
AHB	079675	M8, M10, M12	1.20	25