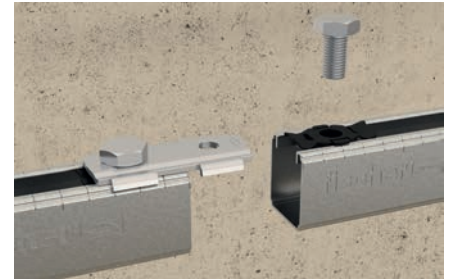


# Sliding channel nut FSM Clix P

Channel nut for quick and easy connection of FLS channels



Floor penetration



Channel extension with channel connector

## Applications

- FSM Clix P is suitable for interconnecting FLS channels by using connecting elements.
- For use in dry interior areas.

## Certificates



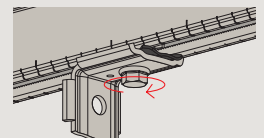
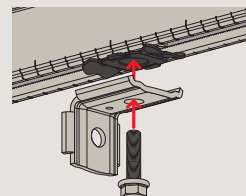
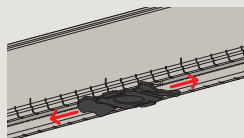
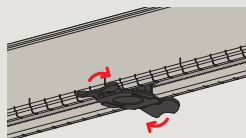
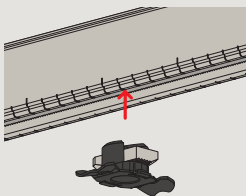
## Advantages

- The special and disappearing thrust block of the sliding nut Clix P plastic holder enables a connection of connecting elements and channels without plastic interlayer to establish a safe longitudinal metallic connection.
- The especially developed spring leg on the FSM Clix P guarantees the necessary contact pressure of the connector to the channel to help for a secure adjustment during installation.
- The teeth on the sliding nut enable an exact and secure positioning in the FLS channel and ease the installation of connector elements.
- The unique stop element on the FSM Clix P connector guarantees the accurate 90°-turn of the connectors in the channel to ensure a save and precise installation.

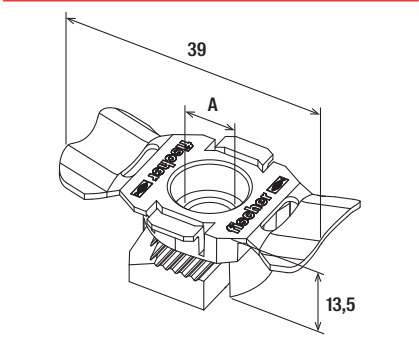
## Properties

- Material channel nut: steel S420MC (material no. 1.0980) acc. to DIN EN 10149-2
- Material plastic cage: polypropylene PP, colour black
- Zinc plating: electro zinc-plated

## Installation FSM Clix P



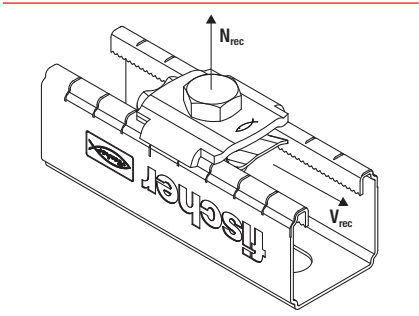
$T_{inst}$   
10 Nm



FSM Clix P

Technical data

Item	Item no.	Thread	Sales unit
		A	[pcs]
FSM Clix P 6	538643	M6	50
FSM Clix P 8	538647	M8	50
FSM Clix P 10	538649	M10	50



FSM Clix P

Loads

Item	Item no.	Max. recommended tension load for FLS 17/1.0 and FLS 30/1.0	Max. recommended tension load for FLS 37/1.2	Max. recommended shear load	Tightening torque	Sales unit
		N <sub>rec</sub> [kN]	N <sub>rec</sub> [kN]	V <sub>rec</sub> [kN]	T <sub>inst</sub> [Nm]	[pcs]
FSM Clix P 6	538643	1.5	2.0	1.00	10	50
FSM Clix P 8	538647	1.5	2.0	1.00	10	50
FSM Clix P 10	538649	1.5	2.0	1.00	10	50