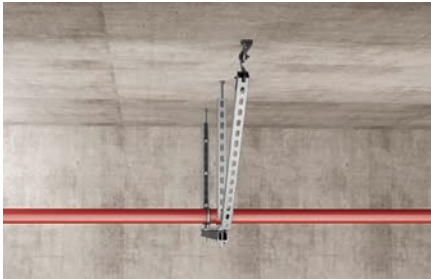
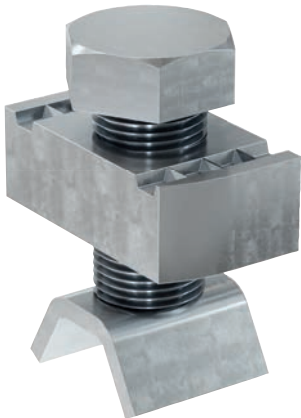


Rod stiffener FTRC M12

Rod stiffener FTRC M12 for attaching strut channel to a threaded rod to accomodate compression loads



Rod stiffing for vertical seismic support

Applications

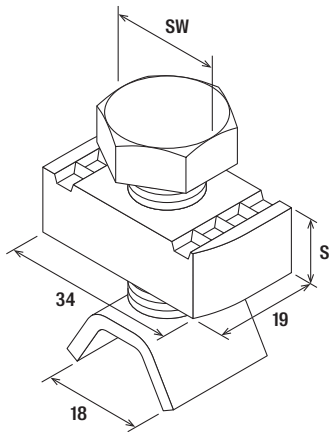
- For the reinforcement of existing suspended constructions due to bracing of threaded rods M10 or M12 to FUS channel profiles.
- For attaching strut channel to a threaded rod to accommodate compression loads.
- For use in dry interior areas.

Advantages

- The pronounced interlocking of the rod stiffeners gives a secure hold in the channel profile and holds the threaded rod in the desired position.
- The exact fit of the rod stiffeners enables quick and easy assembly.
- The assembly enables subsequent insertion in already installed channel profiles by 90° rotation.

Properties

- Material: steel S235JR (material no. 1.0038) acc. to DIN EN 10025-2
- Zinc plating: electro zinc-plated



FTRC

Technical data

Item	Item no.	Thread M	Width across nut SW [mm]	Thickness S [mm]	Installation torque T _{inst} [Nm]	Sales unit [pcs]
FTRC M12	547791	M12	19	12.0	20	50