

# Fixed point light FFP-L / FFP-L2

The fixed point solutions for light loads



Media lines with thermal expansion

## Applications

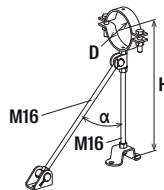
- Heating pipes
- Cooling lines
- Hot water and circulation pipes
- Media lines with thermal expansion
- For use in dry interior areas.

## Advantages

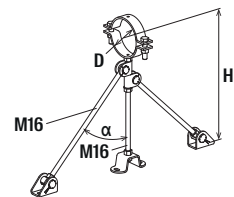
- The supports and braces on one or both sides of the variable fixed point allow adaptation to the distance of the pipeline to the subsoil.
- The fixed points consist of components with matching thread sizes and plug holes, thus ensuring easy assembly with the same tools.
- The height adjustment on the base plate allows for precise adjustment to match mounted pipelines and therefore ensures the safe function of the fixed point.

## Properties

- Material: steel
- Bolts and nuts: strength class 8
- Zinc plating: electro zinc-plated
- Thermal capacity: -30 °C to +300 °C
- Note: Fixed point solid clamp FFPC and threaded rod G16 (chapter „Accessories“ Art. no. 568434) are not included in the set.



FFP-L



FFP-L2

## Technical data

		Max. recom. pipe-ø	Min. construction height	Max. construction height	Bracing angle	Max. recom. axial load	Sales unit
	Item no.	D	H [mm]	H [mm]	α [°]	F <sub>x rec.</sub> [kN]	[pcs]
Item							
FFP-L	567697	139.7	270	500	35 - 45	3.0	1
FFP-L2	567698	139.7	320	500	35 - 45	7.0	1

Note: Maximum loads for orientation. Please contact fischer for the design of the fixed points. Load values for fixing with: 564586 Bolt anchor FAZ II Plus 12/10. For detailed information on assembly, see the assembly instructions for download or as an enclosure to the article.

# Fixed point light FFP-L22 / FFP-L42

The fixed point solutions for light loads

6



Media lines with thermal expansion

## Applications

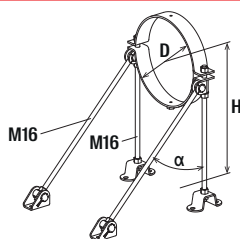
- Heating pipes
- Cooling lines
- Hot water and circulation pipes
- Media lines with thermal expansion
- For use in dry interior areas.

## Advantages

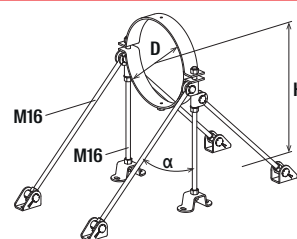
- The supports and braces on one or both sides of the variable fixed point allow adaptation to the distance of the pipeline to the subsoil.
- The fixed points consist of components with matching thread sizes and plug holes, thus ensuring easy assembly with the same tools.
- The height adjustment on the base plate allows for precise adjustment to match mounted pipelines and therefore ensures the safe function of the fixed point.

## Properties

- Material: steel
- Bolts and nuts: strength class 8
- Zinc plating: electro zinc-plated
- Thermal capacity: -30 °C to +300 °C
- Note: Fixed point solid clamp FFPC and the threaded rod G16 (chapter „Accessories“ Art. no. 568434) are not included in the set.



FFP-L22



FFP-L42

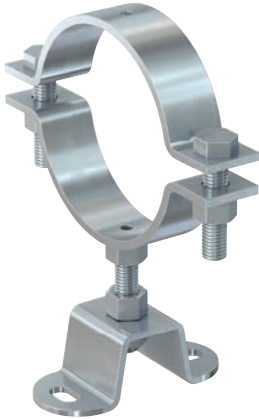
## Technical data

		Max. recom. pipe-ø	Min. construction height	Max. construction height	Bracing angle	Max. recom. axial load	Sales unit
	Item no.	D	H [mm]	H [mm]	α [°]	F <sub>x rec.</sub> [kN]	[pcs]
Item							
FFP-L22	567699	193.7	200	500	35 - 45	4.0	1
FFP-L42	567700	193.7	250	500	35 - 45	7.0	1

Note: Maximum loads for orientation. Please contact fischer for the design of the fixed points. Load values for fixing with: 564586 Bolt anchor FAZ II Plus 12/10. For detailed information on assembly, see the assembly instructions for download or as an enclosure to the article.

# Fixed point compact FFP-C

The fixed point solutions for light loads



Media lines with thermal expansion

### Applications

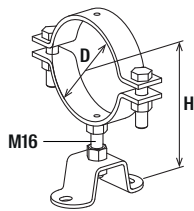
- Heating pipes
- Cooling lines
- Hot water and circulation pipes
- Media lines with thermal expansion
- For use in dry interior areas.

### Advantages

- The compact design of the fixed point enables a small distance to the substrate and ensures safe transfer of the occurring forces into the substrate.
- The height adjustment on the base plate allows for precise adjustment to match mounted pipelines and therefore ensures the safe function of the fixed point.
- The fixed points consist of components with matching thread sizes and plug holes, thus ensuring easy assembly with the same tools.

### Properties

- Material: steel
- Bolts and nuts: strength class 8
- Zinc plating: electro zinc-plated
- Thermal capacity: -30 °C to +300 °C
- Note: Fixed point solid clamp FFPC and the threaded rod G16 (chapter „Accessories“ Art. no. 568434) are not included in the set.



FFP-C

### Technical data

	Item no.	Max. recom. pipe-ø D	Min. construction height H [mm]	Max. construction height H [mm]	Max. recom. axial load F <sub>x rec.</sub> [kN]	Sales unit [pcs]
Item						
FFP-C	567696	60.3	100	150	5.0	1

Note: Maximum loads for orientation. Please contact fischer for the design of the fixed points. Load values for fixing with: 564586 Bolt anchor FAZ II Plus 12/10. For detailed information on assembly, see the assembly instructions for download or as an enclosure to the article.