

# Fixed point heavy FFP-HD22 / FFP-HD42

The fixed point solutions for heavy loads



Media lines with thermal expansion

## Applications

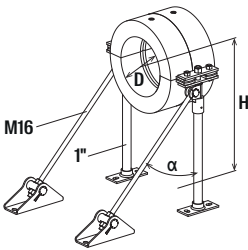
- Heating pipes
- Cooling lines
- Steam pipes
- Hot water and circulation pipes
- Media lines with thermal expansion
- For use in dry interior areas.

## Advantages

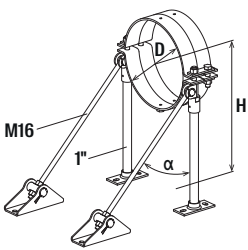
- The supports and braces on one or both sides of the variable fixed point allow adaptation to the distance of the pipeline to the subsoil.
- The fixed points consist of components with matching thread sizes and plug holes, thus ensuring easy assembly with the same tools.
- The height adjustment on the base plate allows for precise adjustment to match mounted pipelines and therefore ensures the safe function of the fixed point.
- The axially and laterally adjustable bracing angles allow the subsoil connection to be adapted to the conditions on site and simplify the installation.
- The fixed point is suitable for mounting the FFPC fixed point solid clamp and FFRC refrigeration fixed point clamp for even more flexibility.

## Properties

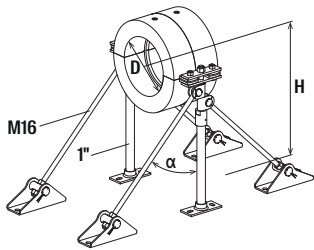
- Material: steel
- Bolts and nuts: strength class 8
- Zinc plating: electro zinc-plated
- Thermal capacity: -30 °C to +300 °C
- Note: Fixed point solid clamps FFPC and FFRC and the threaded rod G16 and G1" (chapter „Accessories“ Art. no. 568434 and 568435) are not included in the set.



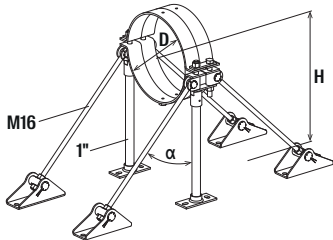
FFP-HD22



FFP-HD22-V1 and FFP-HD22-V2



FFP-HD42



FFP-HD42-V1 and FFP-HD42-V2

6

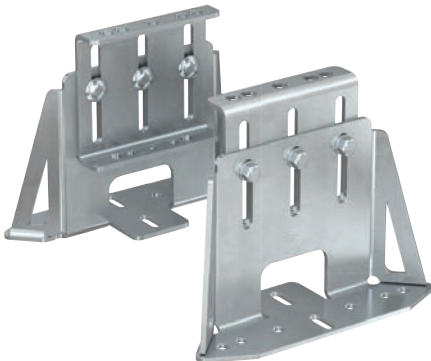
Technical data

		Max. recom. pipe-ø	Min. construction height	Max. construction height	Bracing angle	Max. recom. axial load	Sales unit
	Item no.	D	H [mm]	H [mm]	α [°]	F <sub>x rec.</sub> [kN]	[pcs]
Item							
FFP-HD22	567711	355.6	300	2,000	35 - 45	18.0	1
FFP-HD22-V1	567712	193.7	300	2,000	35 - 45	18.0	1
FFP-HD22-V2	567713	355.6	300	2,000	35 - 45	18.0	1
FFP-HD42	567714	355.6	350	2,000	35 - 45	30.0	1
FFP-HD42-V1	567715	193.7	300	2,000	35 - 45	30.0	1
FFP-HD42-V2	567716	355.6	300	2,000	35 - 45	30.0	1

Note: Maximum loads for orientation. Please contact fischer for the design of the fixed points. Load values for fixing with: 564586 Bolt anchor FAZ II Plus 12/10; 564594 Bolt anchor FAZ II Plus 16/5  
For detailed information on assembly, see the assembly instructions for download or as an enclosure to the article.

# Fixed point saddle FFS-H / FFS-H2

The fixed point solutions for heavy loads



Hot water and circulation pipes



Media lines with thermal expansion

6

## Applications

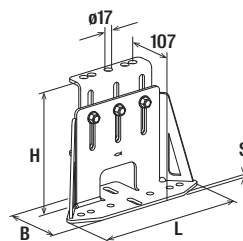
- Heating pipes
- Cooling lines
- Steam pipes
- Hot water and circulation pipes
- Media lines with thermal expansion
- For use in dry interior areas.

## Advantages

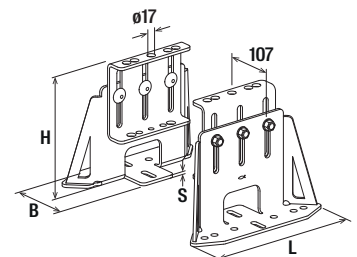
- The massive design of the fixed point and the massive subsoil connection allow the absorption of high loads for a stable and secure connection.
- The fixed points consist of components with matching thread sizes and plug holes, thus ensuring easy assembly with the same tools.
- The height adjustment allows for precise adjustment to match mounted pipelines and therefore ensures the safe function of the fixed point.
- The fixed point is suitable for mounting the FFPC and FFRC for even more flexibility.

## Properties

- Material: steel
- Bolts and nuts: strength class 8
- Zinc plating: electro zinc-plated
- Thermal capacity: -30 °C to +300 °C



FFS-H



FFS-H2

## Technical data

Item	Item no.	Max. recom. pipe-ø	Length L [mm]	Width B [mm]	Thickness S [mm]	Min. construction height H [mm]	Max. construction height H [mm]	Max. recom. axial load F <sub>x rec.</sub> [kN]	Installation torque T <sub>inst</sub> [Nm]	Sales unit [pcs]
FFS-H	569308	355.6	325	130	6.0	210	310	14.0	80	2
FFS-H2	569309	355.6	325	130	6.0	210	310	36.0	80	1

Note: Maximum loads for orientation. Please contact fischer for the design of the fixed points. Load values for fixing with: 564586 Bolt anchor FAZ II Plus 12/10. For detailed information on assembly, see the assembly instructions for download or as an enclosure to the article.