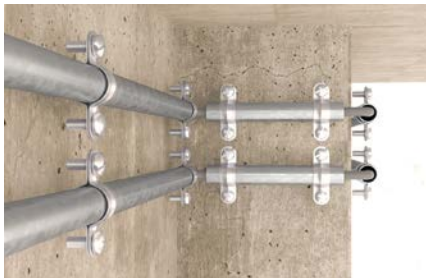


# Spacer pipe clamp AM

The installation-friendly metal spacing disc for cables and pipes.



Fixing steel armoured conduits



Fixing conduits

8

## Applications

- Steel conduits
- Electric cables
- Copper and metal pipes

## Advantages

- The fast-locking latch ensures easy opening and closing without completely removing the screw, and allows for a simple and fast installation.
- The pre-fitted combination screw with

conventional slotted or recessed screw head allows for the use of different screwdrivers, thus allowing for a simple installation.

## Building materials

### When using nail anchor FNA II:

- Concrete
- Solid sand-lime brick
- Natural stone with dense structure
- Pre-stressed concrete hollow slabs

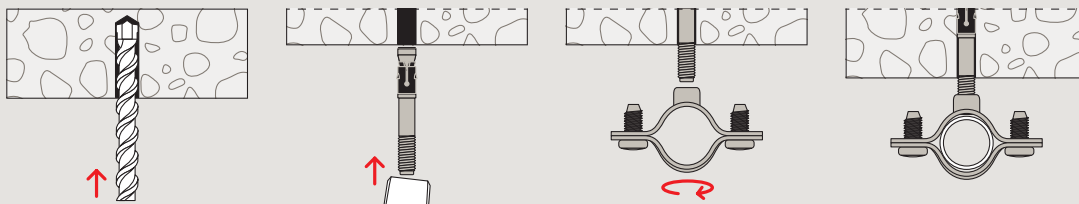
### When using Hammerfix N:

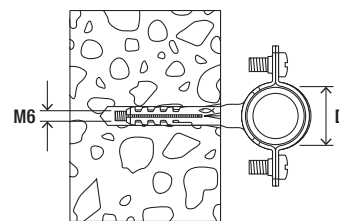
- Concrete
- Solid sand-lime brick
- Building brick
- Natural stone
- Solid brick made from lightweight concrete

## Functioning

- The spacer pipe clamp AM with M6 thread can be secured with the fischer nail anchor FNA II 6x30 M6x41, stud screw STST 6x60 and STST 6x80, or Hammerfix N 6x40/10 M6 as desired.

## Installation AM





Technical data

Spacer pipe clamp AM



AM

Item	Item no.	Dimension IEC	Clamping range D [mm]	Sales unit [pcs]
AM 8	060185	-	8 - 10	50
AM 10	060186	-	10 - 11	50
AM 12	060187	12	12 - 13	50
AM 14	060188	-	14 - 15	50
AM 16	060189	16	15 - 17	50
AM 18	060190	-	18 - 19	50
AM 20	060191	20	20 - 21	50
AM 22	060192	-	22 - 23	50
AM 24	060193	-	24 - 25	50
AM 26	060194	25	26 - 27	50
AM 28	060195	-	28 - 29	50
AM 32	060209	32	32 - 33	25
AM 30	060196	-	30 - 31	50
AM 34	060210	-	34 - 35	25
AM 37	060211	37	37 - 39	20
AM 40	090849	40	40 - 42	15
AM 50	090850	50	50 - 52	10
AM 63	090851	63	63 - 65	10