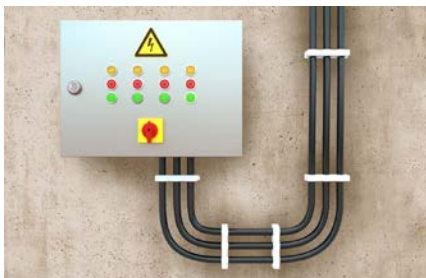


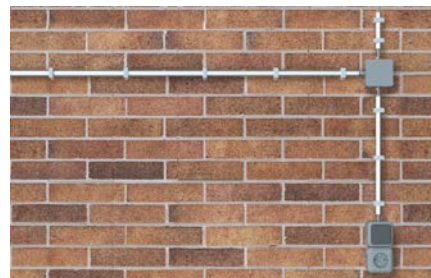
Saddle clip SCH

The flexible cable clamp for various diameters.

8



Fixing cable harnesses



Plastic conduits

Applications

- Electric cables
- Flexible and rigid plastic insulating pipes

Advantages

- With its elastic spring tabs, the saddle clip SCH can bear different cable diameters. This increases flexibility and reduces the number of products required.
- Additional clips can be added to the sides of a pre-fixed clip. This saves ins-

tallation time and materials.

- The long-lasting nylon material is halogen- and silicone-free. It can be used all year round, including during a frost. This ensures a high level of safety.

Certificates / Features



Building materials

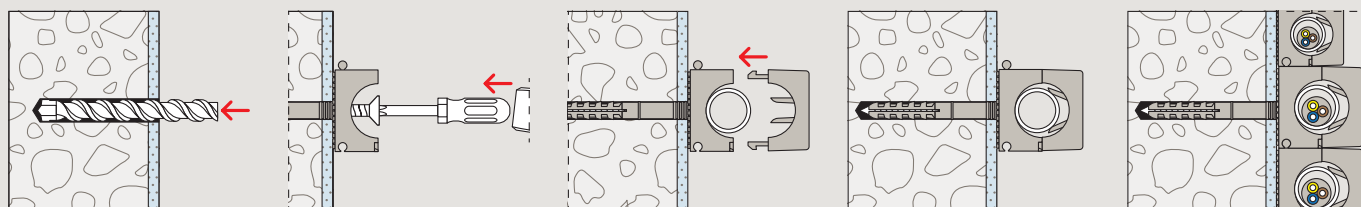
When using Hammerfix N:

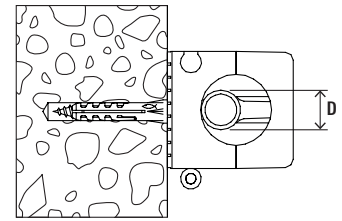
- Concrete
- Vertically perforated brick
- Hollow blocks made from lightweight concrete
- Perforated sand-lime brick
- Solid sand-lime brick
- Building brick
- Natural stone
- Aerated concrete
- Solid panel made from gypsum
- Solid brick made from lightweight concrete

Functioning

- The clamp SCH is adapted to suit the fixture using N 5 Hammerfixes.
- The Hammerfix N is expanded when the nail is driven in, and holds by friction in the drill hole.
- The cables or pipes are then laid in the clamp SCH and fixed by inserting the locking latch.
- The internal tabs adapt to fit various cable or pipe diameters.
- Temperature resistance once installed from -40 °C to +80 °C.

Installation SCH





Technical data

Saddle clip SCH



SCH grey



SCH transparent

Item	grey RAL 7035	Nylon transparent	Clamping range D [mm]	Dimension of insulated pipes	Sales unit [pcs]
	Item no.	Item no.			
SCH 812	068012	060012	8 - 12	6 x 1 - 8 x 1	100
SCH 1216	068016	060016	12 - 16	10 x 1 - 12 x 1	50
SCH 1619	068019	069019	16 - 19	15 x 1	50
SCH 1623	068023	060023	16 - 23	15 x 1 - 18 x 1	50
SCH 2332	068032	060032	23 - 32	22 x 1 - 22 x 1.5	25
SCH 3242	-	060042	32 - 42	22 x 1 - 22 x 1.5	25