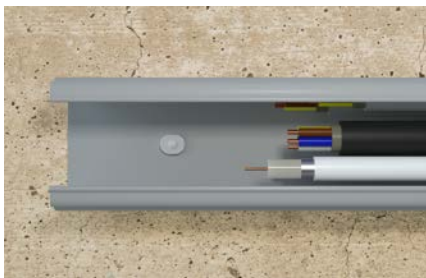


# ClipFix plus SD

The user-friendly clip fixing for cable ducts and cable clasps.

8



Fixing cable ducts



Fixing cable harnesses

## Applications

- Cable channels
- Cable clasps
- Installation base cable harness
- Flat building components

## Advantages

- The ClipFix plus SD combines anchor and screw. This saves on materials and makes it easier to affix cable ducts that are difficult to access without the need for additional tools.
- The simple clip fixing reduces installation time.
- The extended shank of the FS plus SD 40 allows bridging of non-bearing plaster layers, as well as the fixing of thicker attachments.
- The long-lasting nylon material is flame resistant, halogen- and silicone-free. It can be used all year round, including during a frost. This ensures a high level of safety.

## Certificates / Features



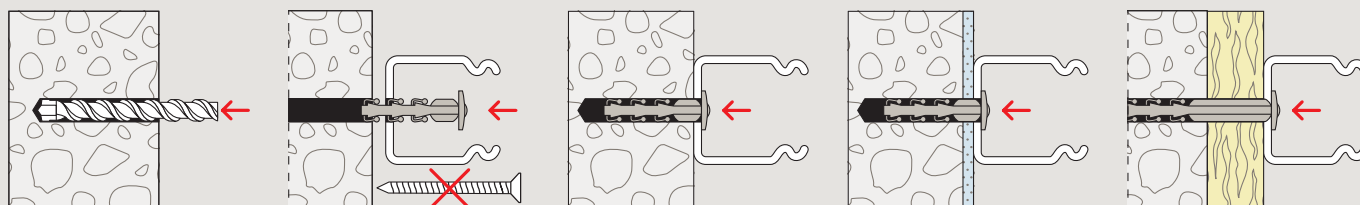
## Building materials

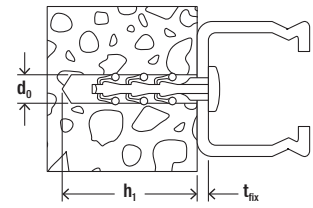
- Concrete
- Solid pumice block
- Solid sand-lime brick
- Natural stone with dense structure
- Solid brick

## Functioning

- To fix, manually place the ClipFix plus SD directly into the drill hole. No additional screws are needed.
- The clamping force of the locking catch allows the ClipFix to hold itself in the drill hole.
- Recommended loads (required safety factor considered): clip fixing SD up to 11 kg.
- Temperature resistance once installed from -20 °C to +80 °C.
- Flammability material UL 94-V0.

## Installation SD





## Technical data

### ClipFix plus SD



### SF plus SD

Item	Item no.	Drill diameter $d_0$ [mm]	Min. drill hole depth $h_1$ [mm]	Max. usable length $t_{fix}$ [mm]	Sales unit [pcs]
SF plus SD 30	058178	6	35	4	200
SF plus SD 40	058179	6	35	15	100