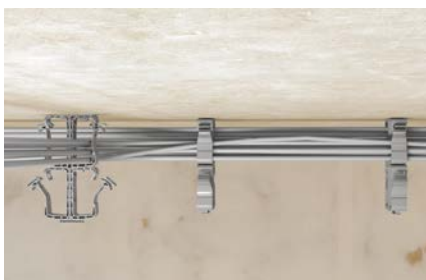


# Cable harness SHA

The adaptable cable harness for fixing cable bundles.

8



Fixing cable bundles



Fixing cable bundles

## Applications

- Electric cables, loose and bundled

## Advantages

- Simple bundling and economical laying of multiple electric cables.
- The seal of the cable harness SHA makes it easy to lay cables at a later date, thus ensuring high user-friendliness.
- Combining several SHA cable harnesses allows for a cost-effective fixing of cables to just one MS installation base.
- The MS installation base allows for various fixing options, and offers great flexibility for the installation.
- The long-lasting nylon material is halogen- and silicone-free, can be used all year round, including during a frost, and thus ensures a high level of safety.

## Certificates / Features



## Building materials

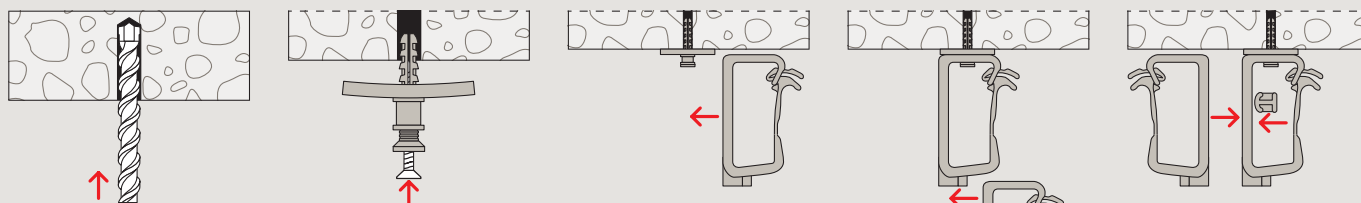
### When using ClipFix SD:

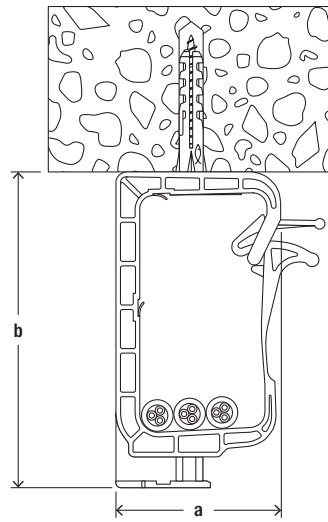
- Concrete
- Solid pumice block
- Solid sand-lime brick
- Natural stone with dense structure
- Solid brick

## Functioning

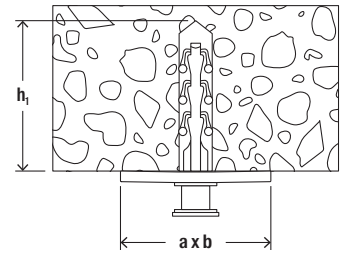
- Cable bundles can be laid in the cable harness SHA. The seal makes it easy to lay cables at a later date.
- The cable harness SHA can either be affixed with ClipFix plus, installation base MS or with plugs and screws.
- Several SHA cable harnesses can be combined below one another.
- The SHA cable harnesses can also be lined up adjacent to one another with the connection piece SHA KP.
- The maximum installation distance of 80 cm must not be exceeded.
- Temperature resistance once installed from -20 °C to +80 °C.

## Installation SHA





SHA



SF plus MS

Technical data

Cable harness SHA



SHA



SHA MS



SF plus MS



SHA KP

Item	Item no.	Drill diameter $d_0$ [mm]	Min. drill hole depth $h_1$ [mm]	Dimensions a x b [mm]	Max. number of ducts	Sales unit [pcs]
SHA 15	058139	–	–	93 x 49	15 ducts NYM 3 x 1,5	50
SHA 30	058140	–	–	128 x 59	30 ducts NYM 3 x 1,5	25
SHA MS	058141	–	–	41 x 27	–	50
SF plus MS	048181	6	35	–	–	50
SHA KP	058142	–	–	–	–	50