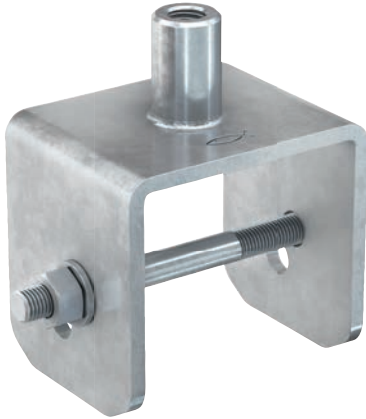


# Connecting element FMCE

Tailor-made fixing massive profiles FMP



Pipe clamp connection to profile

## Applications

- Fixing of pipes using threaded rods.
- For indoor and outdoor application.

## Advantages

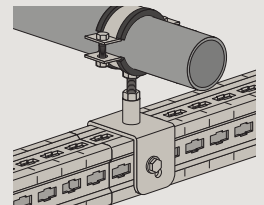
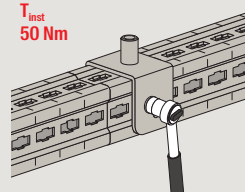
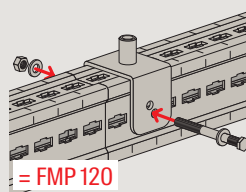
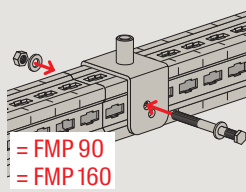
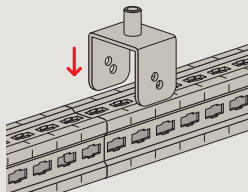
- The U-shaped connecting elements allow an easy connection of pipe clamps.
- Supplying the connecting element as a set with the necessary screw, hexagonal nut and washer ensures error-free installation.

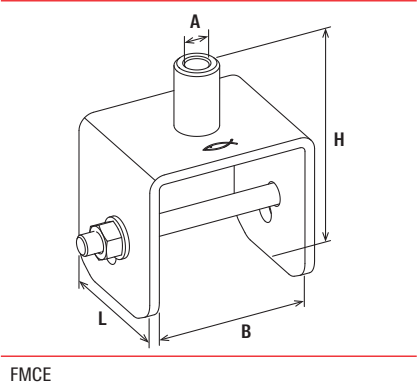
## Properties

- Material: steel S235JR (material no. 1.0038) acc. to DIN EN 10025-2
- Zinc plating: hot-dip galvanised acc. to DIN EN ISO 1461
- Material screw: steel grade 8.8

11

## Installation FMCE





Technical data

	Item no.	Thread A	Length L [mm]	Width B [mm]	Height H [mm]	Sales unit [pcs]
Item						
FMCE M12/M16	547815	M12 / M16	80	91	134	10
FMCE 1/2"	547816	1/2"	80	91	134	10
FMCE 3/4"	547817	3/4"	80	91	134	10