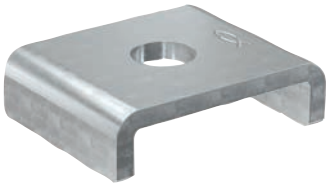


Channel washer HK 41

Connector - Channel washer HK

4



Lateral pipe mounting at channel



Channel installation at ceiling

Applications

- The channel washer HK is used for stable connections and to strengthen the FUS profile for a fixing to the substrate.
- For use in dry interior areas.

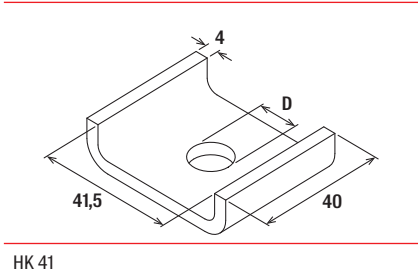
Advantages

- Perfect connection with the FUS channel thanks to laterally curved contours.
- The shape of the channel washer makes the push-through installations of channel profiles quick and easy.
- Fire resistance classification R120 & German model pipeline system guideline MLAR R30.

Properties

- Material: steel S235JR (material no. 1.0037) acc. to DIN EN 10025
- Zinc plating: electro zinc-plated

Certificates / Features



HK 41

Technical data

Item	Item no.	Ap- pro- val	Fire test report	Hole-ø D [mm]	Sales unit [pcs]
		ETA			
HK 41 8.5	547492	–	–	8.5	50
HK 41 10.5	547493	●	Yes	10.5	50
HK 41 12.5	547494	●	Yes	12.5	50
HK 41 17	561253	–	–	17	50

Channel washer HK 41 hdg

Connector - Channel washer HK 41 hdg



Lateral pipe mounting at channel



Channel installation at ceiling

10

Applications

- The channel washer HK is used for stable connections and to strengthen the FUS profile for a fixing to the substrate.
- For indoor and outdoor application.

Certificates

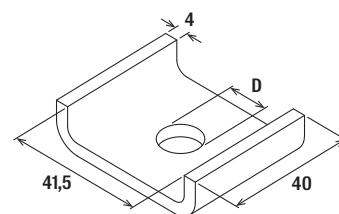


Advantages

- Perfect connection with the FUS channel thanks to laterally curved contours.
- The shape of the channel washer makes the push-through installations of channel profiles quick and easy.
- Fire resistance classification R120 & German model pipeline system guideline MLAR R30.

Properties

- Material: steel S235JR (material no. 1.0037) acc. to DIN EN 10025
- Zinc plating: hot-dip galvanised



HK 41

Technical data

Item	Item no.	Fire test report	Hole-Ø D [mm]	Sales unit [pcs]
HK 41 10.5 hdg	547495	Yes	10.5	50
HK 41 12.5 hdg	547496	Yes	12.5	50
HK 41 17 hdg	561254	No	17	50

Channel washer HK 41 A4

Connector - Channel washer HK 41 A4



Channel installation at ceiling

Applications

- The channel washer HK is used for stable connections and to strengthen the FUS profile for a fixing to the substrate.
- For indoor and outdoor applications and in environments with high stress to components due to corrosion.

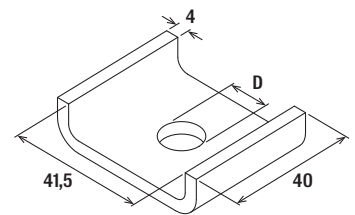
Advantages

- Perfect connection with the FUS channel thanks to laterally curved contours.
- The shape of the channel washer makes the push-through installations of channel profiles quick and easy.
- Fire resistance classification R120 & German model pipeline system guideline MLAR R30.

Properties

- Material: stainless steel A4 (material no 1.4401) acc. DIN EN 10088-1

12



HK 41

Technical data

Item	Item no.	Fire test report	For profile	Hole-Ø D [mm]	Sales unit [pcs]
HK 41 12.5 - A4	559750	Yes	all FUS channels	12.5	25
HK 41 17 - A4	562665	No	all FUS channels	17	25