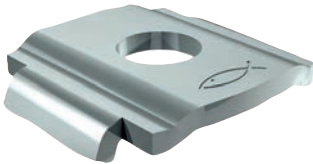


Channel washer HK 31

Connector - Channel washer HK 31

3



Pipe fixing at mounting channel



Horizontal pipe fixing

Applications

- The Channel washer HK 31 is used for stable connections and to strengthen the FLS profile for a fixing to the substrate.
- For use in dry interior areas.

Certificates

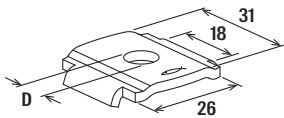


Advantages

- The special retaining brackets at the SV connecting elements enable a form-locking installation longitudinal and transverse to the channel direction to adapt the channel connection effectively.
- The standardised slots of the Channel washer enable an exact push-through connection of FLS mounting channels easy and fast.

Properties

- Material: steel S235JR+CR (material no. 1.0037) acc. to DIN EN 1652
- Zinc plating: electro zinc-plated



HK 31

Technical data

Item	Item no.	Hole-Ø D [mm]	Sales unit
			[pcs]
HK 31 8,5	538663	8.5	50
HK 31 10.5	538664	10.5	50