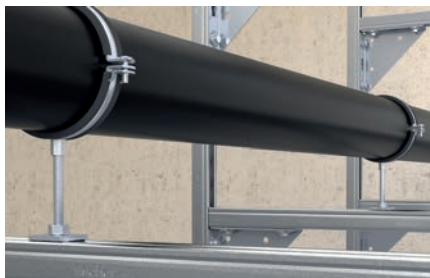


Channel nut FCN Clix M

Channel nut for quick and easy fixing in FUS profiles

4



Connection on channel

Applications

- Connection of pipe clamps to FUS channel under the use of threaded rods.
- For use in dry interior areas.

Advantages

- The sliding nut design enables a quick and easy setting in the channel.
- The serration on the sliding nut provides a secure hold in the FUS channel.
- Installation by rotating 90° enables post-installation in installed channel.

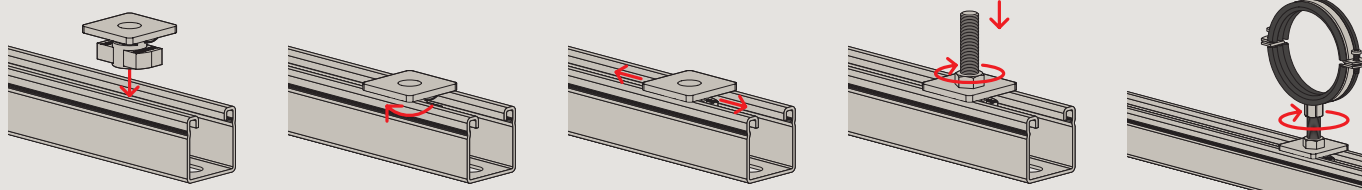
Properties

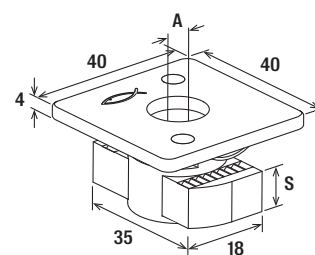
- Material: steel S235JR (material no. 1.0037) acc. to DIN EN 10025
- Material plastic: Nylon PA6
- Zinc plating: electro zinc-plated

Certificates



Installation FCN Clix M



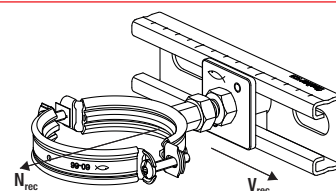


FCN Clix M

Technical data

4

Item	Item no.	Fire test report	Thread A	Thickness S [mm]	Sales unit [pcs]
FCN Clix M 6	559761	No	M6	6.0	50
FCN Clix M 8	559762	No	M8	6.0	50
FCN Clix M 10	559763	Yes	M10	8.0	50
FCN Clix M 12	559764	Yes	M12	9.5	50



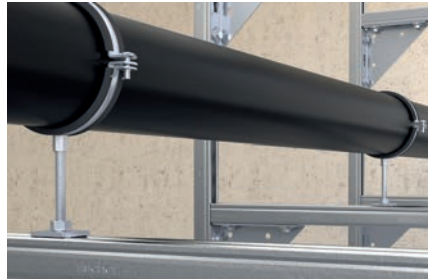
FCN Clix M

Loads

Item	Item no.	Max. recommended tension load for FUS 1,5 mm N_{rec} [kN]	Max. recommended tension load for FUS 2,0 mm N_{rec} [kN]	Max. recommended tension load for FUS 2,5 mm N_{rec} [kN]	Tightening torque for screw grade ≥ 4.6 T_{inst} [Nm]	Sales unit [pcs]
FCN Clix M 6	559761	2.5	3.0	3.0	5	50
FCN Clix M 8	559762	3.0	4.0	4.0	10	50
FCN Clix M 10	559763	4.0	5.0	8.0	15	50
FCN Clix M 12	559764	4.0	5.0	8.0	20	50

Channel nut FCN Clix M hdg

Channel nut for quick and easy fixing in FUS profiles



Connection on channel

10

Applications

- Connection of pipe clamps to FUS channel under the use of threaded rods.
- For indoor and outdoor application.

Certificates



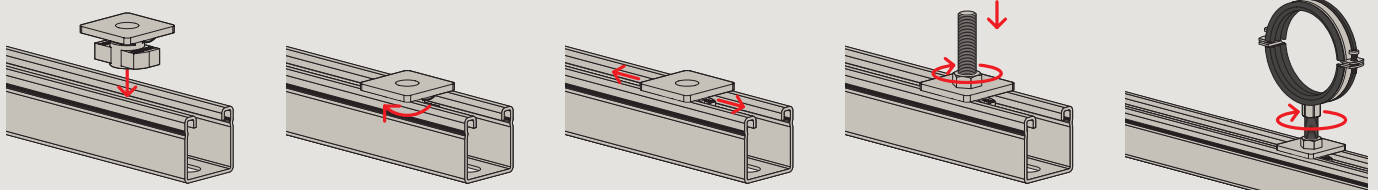
Advantages

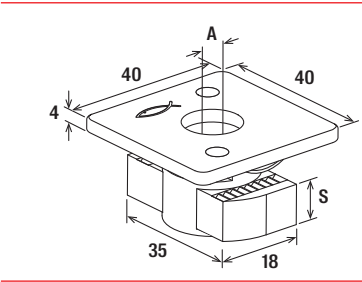
- The sliding nut design enables a quick and easy setting in the channel.
- The serration on the sliding nut provides a secure hold in the FUS channel.
- Installation by rotating 90° enables post-installation in installed channel.

Properties

- Material: steel S235JR (material no. 1.0037) acc. to DIN EN 10025
- Material plastic: Nylon PA6
- Zinc plating: hot-dip galvanised

Installation FCN Clix M

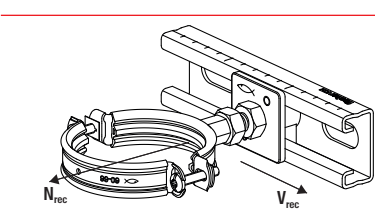




FCN Clix M

Technical data

		Fire test report	Thread	Thickness	Sales unit
Item	Item no.		A	S [mm]	[pcs]
FCN Clix M 8 hdg	559768	No	M8	6.0	50
FCN Clix M 10 hdg	559769	Yes	M10	8.0	50
FCN Clix M 12 hdg	559770	Yes	M12	9.5	50



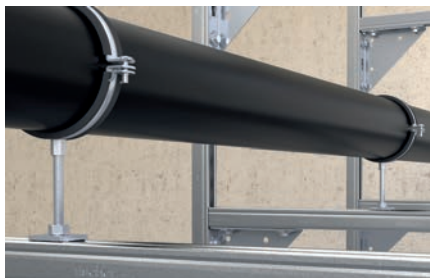
FCN Clix M

Loads

		Max. recommended tension load for FUS 2,0 mm	Max. recommended tension load for FUS 2,5 mm	Tightening torque for screw grade ≥ 4.6	Sales unit
Item	Item no.	N_{rec} [kN]	N_{rec} [kN]	T_{inst} [Nm]	[pcs]
FCN Clix M 8 hdg	559768	4.0	4.0	10	50
FCN Clix M 10 hdg	559769	5.0	8.0	15	50
FCN Clix M 12 hdg	559770	5.0	8.0	20	50

Channel nut FCN Clix M A4

Channel nut for quick and easy fixing in FUS profiles



Connection on channel

12

Applications

- Connection of pipe clamps to FUS channel under the use of threaded rods.
- For indoor and outdoor applications and environments with high stress to components due to corrosion.

Advantages

- The sliding nut design enables a quick and easy setting in the channel.
- The serration on the sliding nut provides a secure hold in the FUS channel.
- Installation by rotating 90° enables post-installation in installed channel.

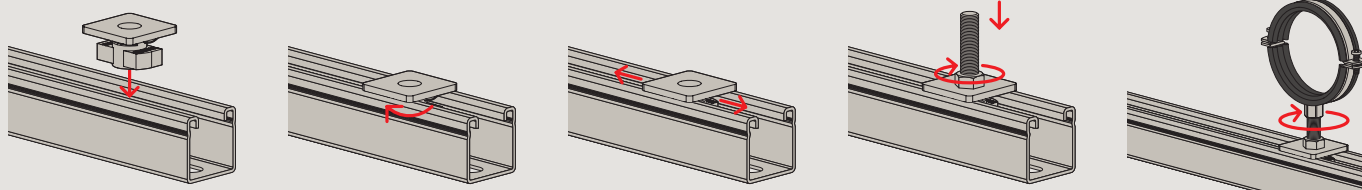
Properties

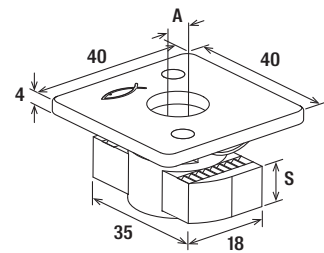
- Material: stainless steel A4 (material no. 1.4401)
- Material plastic: Nylon PA6

Certificates



Installation FCN Clix M

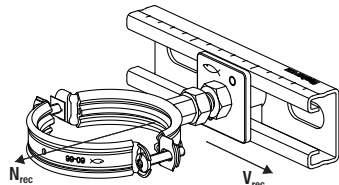




FCN Clix M

Technical data

		Thread	Thickness	Sales unit
	Item no.	A	S	
Item			[mm]	[pcs]
FCN Clix M 8 A4	559752	M8	6.0	25
FCN Clix M 10 A4	559753	M10	8.0	25
FCN Clix M 12 A4	562663	M12	9.5	25



FCN Clix M

12

Loads

		Max. recommended tension load for FUS	Max. recommended tension load for FUS	Tightening torque	Sales unit
	Item no.	2,0 mm	2,5 mm		
		N _{rec}	N _{rec}	T _{inst}	
Item		[kN]	[kN]	[Nm]	[pcs]
FCN Clix M 8 A4	559752	4.0	4.0	10	25
FCN Clix M 10 A4	559753	5.0	8.0	15	25
FCN Clix M 12 A4	562663	5.0	8.0	20	25