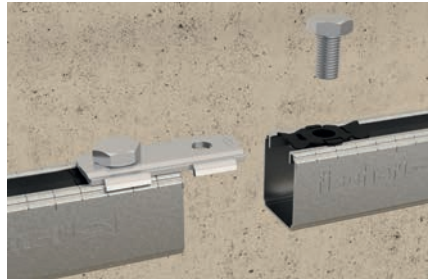
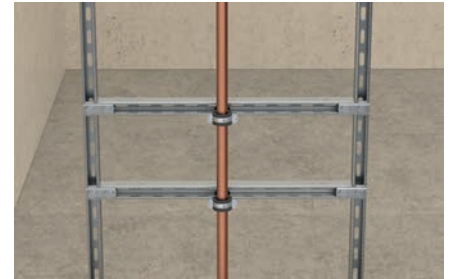


Channel connector SV 31

Construction element - Channel connector SV 31



Channel extension with channel connector



Vertical installation

3

Applications

- With the channel connector SV 31 FLS channels can be connected in different directions.
- For use in dry interior areas.

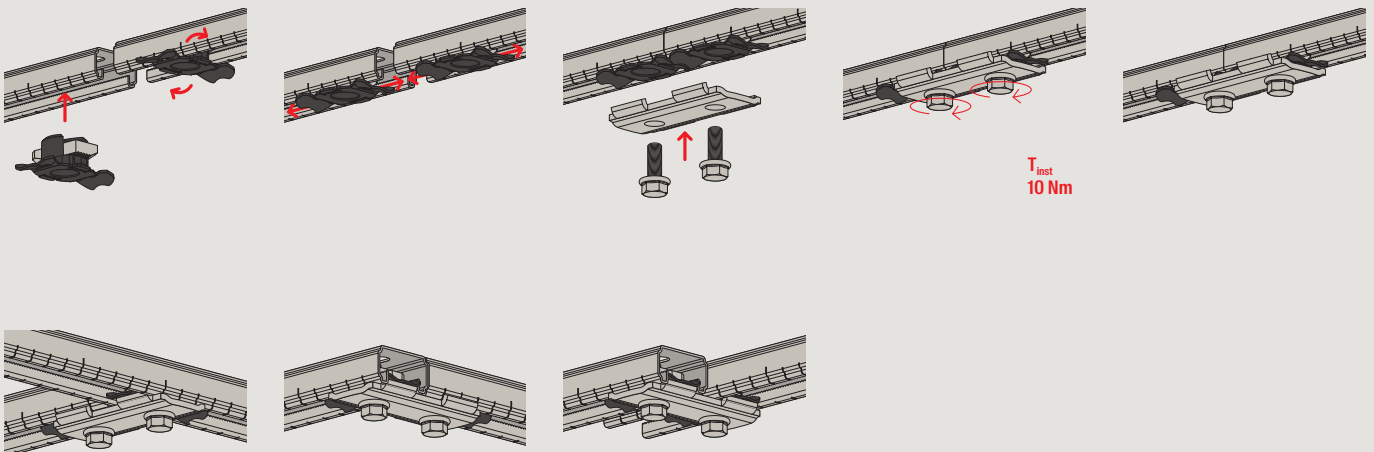
Advantages

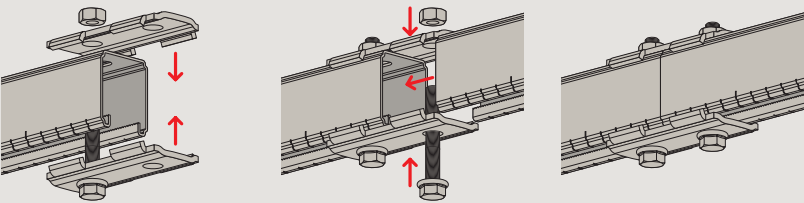
- The special retaining brackets at the SV construction elements enable a form-locking installation longitudinal and transverse to the channel direction to adapt the channel connection effectively
- The standardised long slots of the channel connector enable an exact connection to ALK cantilever arms or FLS channels by using FSM Clix P and a screw

Properties

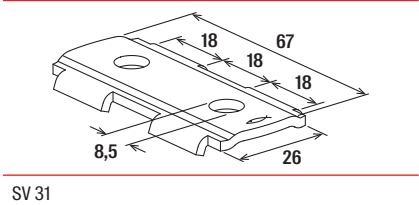
- Material: steel S235JR+CR (material no. 1.0037) acc. to DIN EN 1652
- Zinc plating: electro zinc-plated

Installation SV 31





3



SV 31

Technical data

		Hole-Ø D [mm]	Sales unit [pcs]
Item	Item no.		
SV 31	538641	8.5	25

Loads

		Max. recommended shear load V_{rec} [kN]	Tightening torque T_{inst} [Nm]	Sales unit [pcs]
Item	Item no.			
SV 31	538641	1.00	10	25