

# Channel brace connector S-VB

Channel brace connector for seismic bracing of framework constructions with FUS channel profiles



Bracing of frame construction with channel profiles

## Applications

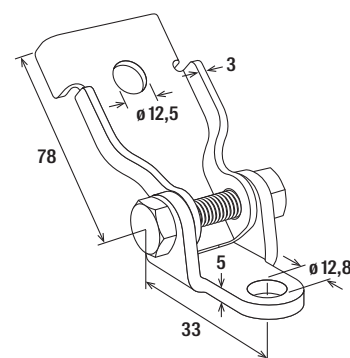
- For seismic bracing of new as well as already installed framework constructions with FUS channel profiles.
- For use in dry interior areas.

## Advantages

- The design of the channel brace connector S-VB allows a variable fixation at angles between 30° and 60° for a flexible adaptation to new and already existing construction.
- The lamellae bent upwards and downwards allow the easy installation of the channel profile to the channel brace connector.
- The possibility to mount two channel brace connectors on top of each other offers the option to clamp the same point in different directions.

## Properties

- Material bracket: steel S275JR (material no. 1.0044) acc. to DIN EN 10025-2
- Material supporting plate: steel S355MC (material no. 1.0976) acc. to DIN EN 10149-2
- Screw: M10x45, strength class 8.8, electro zinc-plated
- Nut: M10, strength class 8, electro zinc-plated



S-VB

## Technical data

Item	Item no.	For profile	Sales unit
			[pcs]
S-VB	552362	FUS	10