

Bracket PFFF

Construction elements - Brackets PFFF

4



Waste water pipe

Applications

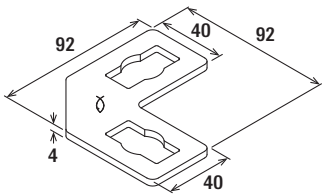
- Arrangement of simple channel constructions in the push-through system.
- For use in dry interior areas.

Advantages

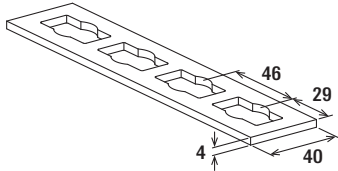
- The holes in the connecting elements make them compatible with the push-through connector PFCN.
- Simple creation of channel constructions in connection with FUS channels and PFCN 41.
- Quick assembly by 90° rotation of the push-through connector PFCN 41 in the channel.

Properties

- Material: steel DD11 (material no. 1.0332) acc. to DIN EN 10111
- Zinc plating: electro zinc-plated



PFFF 2L



PFFF 4L

Technical data

Item	Item no.		Sales unit
			[pcs]
PFFF 2L	533745		20
PFFF 4L	535268		25

See push-through connector PFCN for loads.

Bracket PFFF zl

Construction elements - Brackets PFFF zl



Waste water pipe

Applications

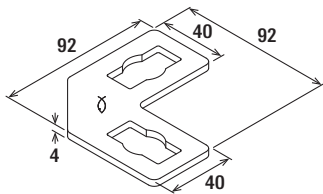
- Arrangement of simple channel constructions in the push-through system.
- For indoor and outdoor application.

Advantages

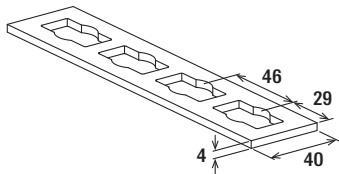
- The holes in the connecting elements make them compatible with the push-through connector PFCN 41 zl.
- Simple creation of channel structures in conjunction with FUS channels and PFCN 41 zl.
- Quick installation by rotating the PFCN 41 zl in the channel by 90° clockwise.

Properties

- Material: steel DD11 (material no. 1.0332) acc. to DIN EN 10111
- Coating: zinclamella



PFFF 2L



PFFF 4L

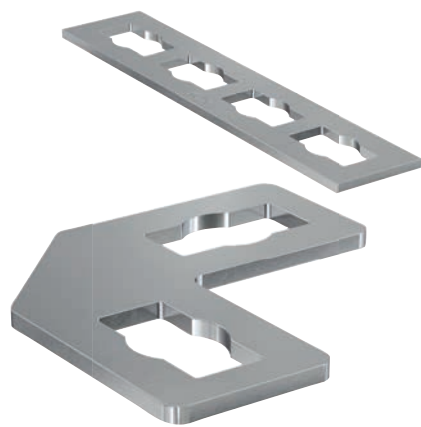
Technical data

Item	Item no.		Sales unit
			[pcs]
PFFF 2L zl	542721		20
PFFF 4L zl	542725		10

See push-through connector PFCN 41 zl for loads

Bracket PFFF A4

Construction elements - Brackets PFFF A4



Waste water pipe

12 Applications

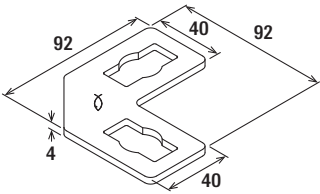
- Arrangement of simple channel constructions in the push-through system
- For indoor and outdoor applications and in environments with high stress to components due to corrosion

Advantages

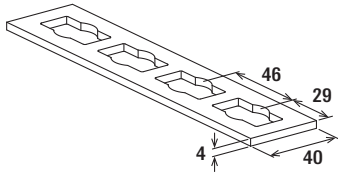
- The holes in the connecting elements make them compatible with the push-through connector PFCN 41.
- Simple creation of channel structures in conjunction with FUS channels and PFCN 41 .
- Quick installation by rotating the PFCN 41 in the channel by 90° clockwise.

Properties

- Material: stainless steel A4 (material no. 1.4401)



PFFF 2L



PFFF 4L

Technical data

Item	Item no.		Sales unit
			[pcs]
PFFF 2L A4	562827		20
PFFF 4L A4	562828		25

See push-through connector PFCN 41 A4 for loads.