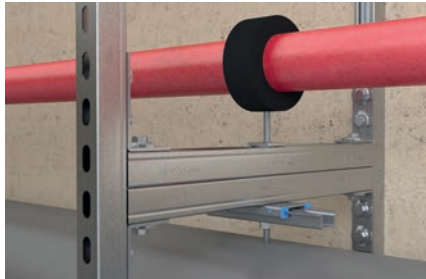
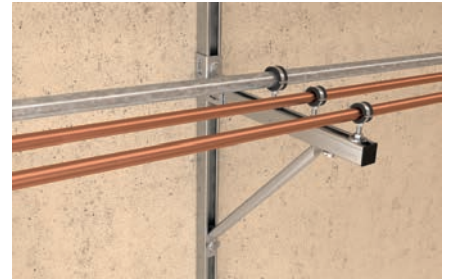


Bracket PFAF

Construction elements - angle brackets PFAF



Frame constructions



Lightweight installation on cantilever

4

Applications

- Arrangement of simple channel constructions in the push-through system.
- For use in dry interior areas.

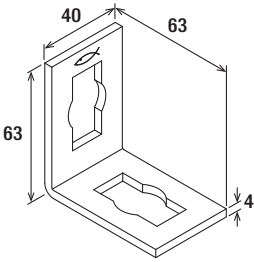
Advantages

- The holes in the connecting elements make them compatible with the push-through connector PFCN.
- Simple creation of channel constructions in connection with FUS channels and PFCN 41.
- Quick assembly by 90° rotation of the push-through connector PFCN 41 in the channel.

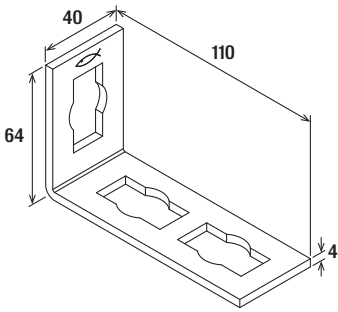
Properties

- Material: steel DD11 (material no. 1.0332) acc. to DIN EN 10111
- Zinc plating: electro zinc-plated

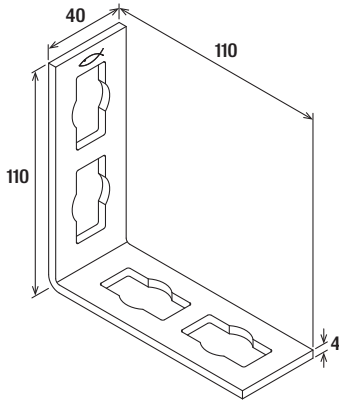
4



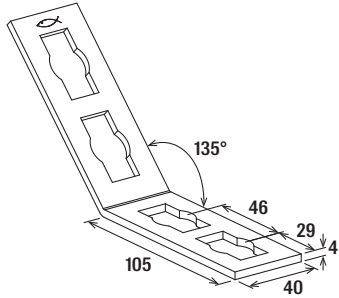
PFAF 2



PFAF 3



PFAF 4



PFAF 4/135°

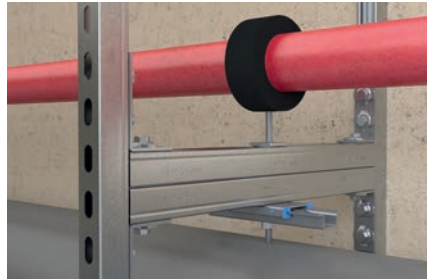
Technical data

	Item no.		Sales unit
Item			[pcs]
PFAF 2	533735		25
PFAF 3	533736		25
PFAF 4	535267		25
PFAF 4/135°	533737		20

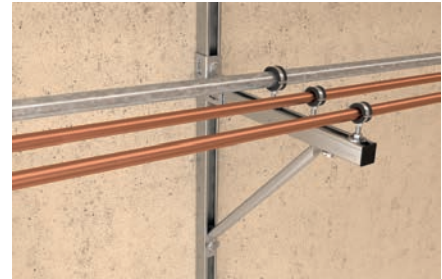
See push-through connector PFCN for loads.

Bracket PFAF zl

Construction elements - Brackets PFAF zl



Frame constructions



Lightweight installation on cantilever

10

Applications

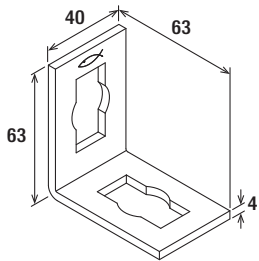
- Arrangement of simple channel constructions in the push-through system.
- For indoor and outdoor application.

Advantages

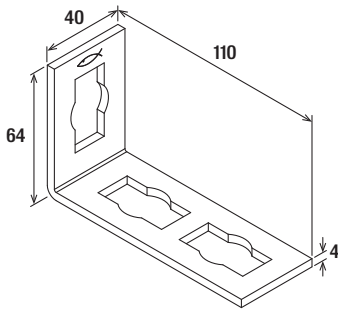
- The holes in the connecting elements make them compatible with the push-through connector PFCN 41 zl.
- Simple creation of channel structures in conjunction with FUS channels and PFCN 41 zl.
- Quick installation by rotating the PFCN 41 zl in the channel by 90° clockwise.

Properties

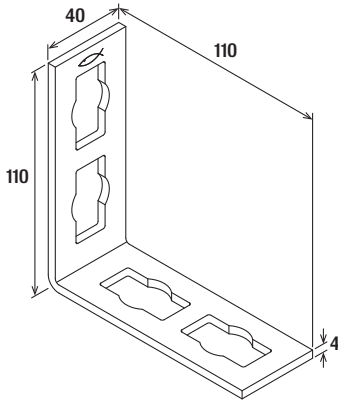
- Material: steel DD11 (material no. 1.0332) acc. to DIN EN 10111
- Coating: zinclamella



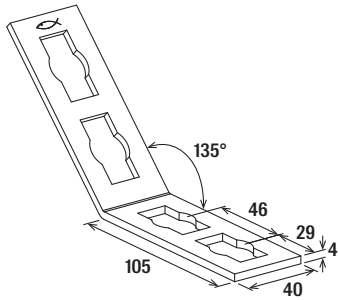
PFAF 2



PFAF 3



PFAF 4



PFAF 4/135°

10

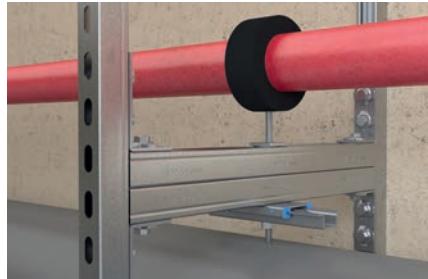
Technical data

	Item no.		Sales unit
Item			[pcs]
PFAF 2 zl	542711		25
PFAF 3 zl	542712		25
PFAF 4/135° zl	542713		20
PFAF 4 zl	542724		25

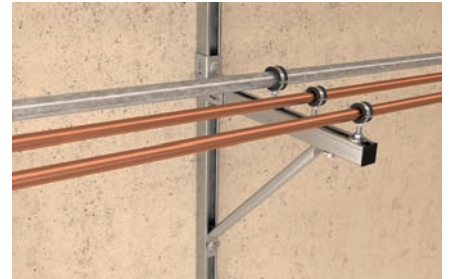
See push-through connector PFCN 41 zl for loads

Bracket PFAF A4

Construction elements - Brackets PFAF A4



Frame constructions



Lightweight installation on cantilever

Applications

- Arrangement of simple channel constructions in the push-through system.
- For indoor and outdoor applications and in environments with high stress to components due to corrosion.

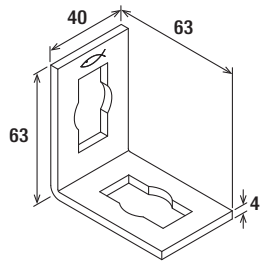
Advantages

- The holes in the connecting elements make them compatible with the push-through connector PFCN.
- Simple creation of channel structures in conjunction with FUS channels and PFCN 41.
- Quick installation by rotating the PFCN 41 in the channel by 90° clockwise.

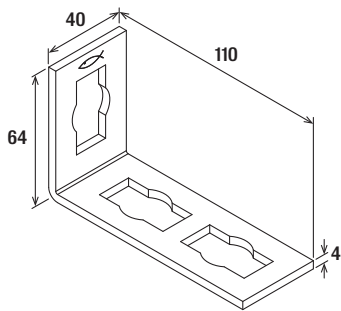
Properties

- Material: stainless steel A4 (material no. 1.4401)

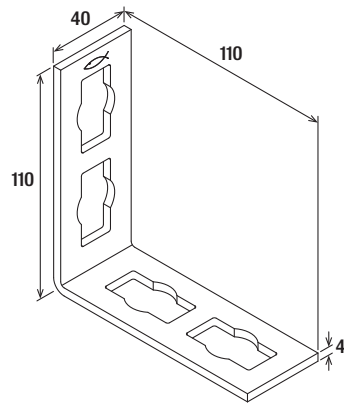
12



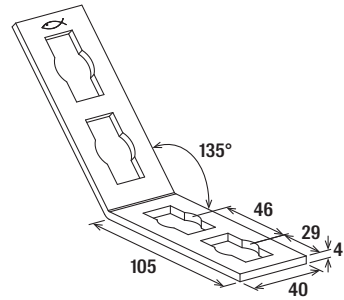
PFAF 2



PFAF 3



PFAF 4



PFAF 4/135°

Technical data

	Item no.		Sales unit
Item			[pcs]
PFAF 2 A4	562829		25
PFAF 3 A4	562830		25
PFAF 4/135° A4	562831		20
PFAF 4 A4	562832		25

See push-through connector PFCN 41 A4 for loads.