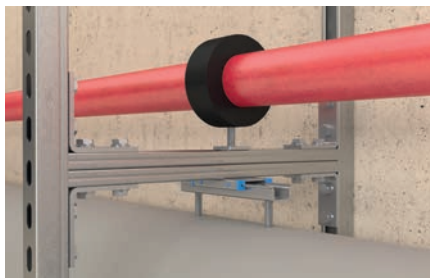


Bracket FAF

Construction elements - Mounting brackets FAF

4



Frame constructions

Applications

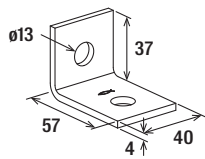
- Connecting elements for the joining or strengthening of simple channel constructions.
- For use in dry interior areas.

Advantages

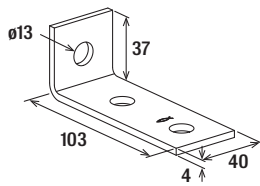
- The various shapes of the connectors offer flexibility when it comes to the installation of channel constructions.
- The holes in the connectors guarantee a system fit with the FCN Clix P.

Properties

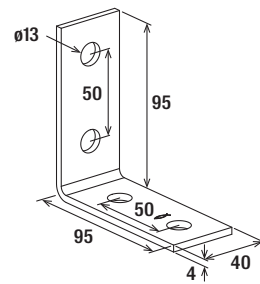
- Material: steel S235JR (material no. 1.0037) acc. to DIN EN 10025
- Zinc plating: electro zinc-plated



FAF 2

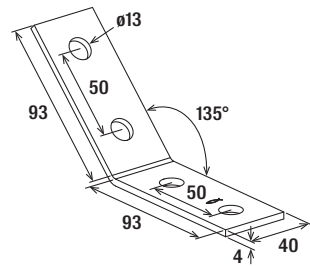


FAF 3



FAF 4

4



FAF 4/135°

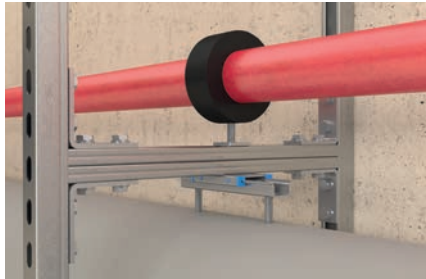
Technical data

	Item no.		Sales unit
Item			[pcs]
FAF 2	547502		25
FAF 3	547503		25
FAF 4	547504		25
FAF 4/135°	547505		25

See channel nut FCN Clix P for loads.

Bracket FAF hdg

Construction elements - Mounting bracket FAF hdg



Frame constructions

10

Applications

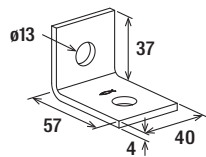
- Connecting elements for the joining or strengthening of simple channel constructions.
- For indoor and outdoor application.

Advantages

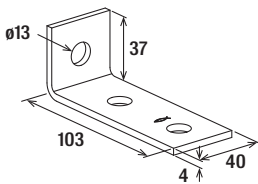
- The various shapes of the connectors offer flexibility when it comes to the installation of channel constructions.
- The holes in the connectors guarantee a system fit with the FCN Clix P.

Properties

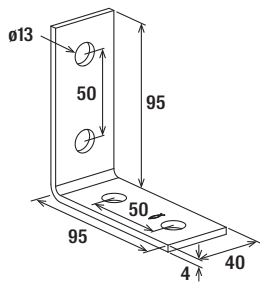
- Material: steel S235JR (material no. 1.0037) acc. to DIN EN 10025
- Zinc plating: hot-dip galvanised



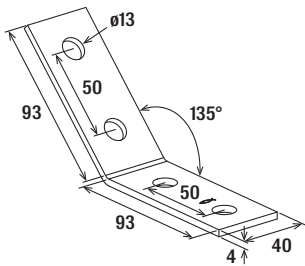
FAF 2



FAF 3



FAF 4



FAF 4/135°

10

Technical data

	Item no.		Sales unit
Item			[pcs]
FAF 2 hdg	547508		25
FAF 3 hdg	547509		25
FAF 4 hdg	547510		25
FAF 4/135° hdg	547511		25

See channel nut FCN Clix P hdg. for loads