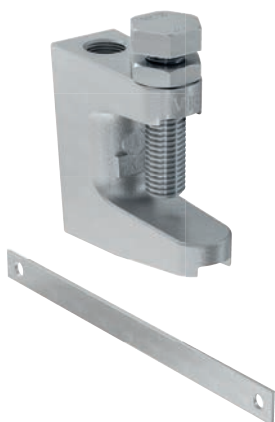


# Beam clamp TKL

Clamp hanger TKL - the easy fixing solution without welding and drilling



Heavy drainage pipe on beam clamp

9

## Applications

- Clamp hangers allow for simple fixing by clamping direct to steel girders.
- Retaining straps SS-TKL are required for VdS equipment over Ø 65 mm.
- For use in dry interior areas.

## Certificates



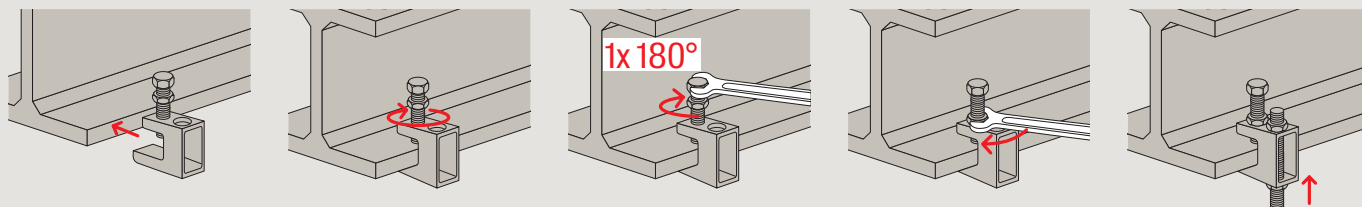
## Advantages

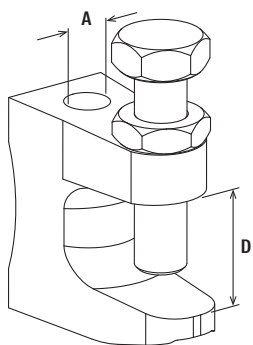
- The TKL design with its clamping screw allows for fixing to steel girders without the need for welding and drilling.
- The design of the clamping screw prevents it from slipping from the steel girder.
- VdS/FM/UL certificates guarantee independently tested safety.
- The solid TKL design guarantees a high load-bearing capacity.
- The TKL with thread mount guarantees quick and easy installation.
- The TKL with through-hole allows for height adjustment after installation.

## Properties

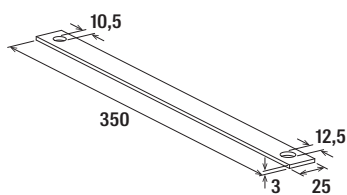
- Material TKL: malleable cast iron EN-GJMB-350-10 acc. to DIN 1562
- Material bolt: steel 8.8 acc. to ISO 4017
- Material nut: steel acc. to ISO 4035, strength category 4
- Material SS-TKL: steel DX51D (material no. 1.0226) acc. to EN 10214
- Zinc plating: electro zinc-plated

## Installation TKL

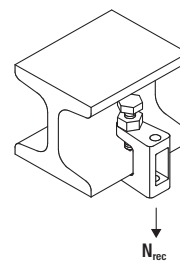




TKL



SS-TKL



## Technical data

		VdS approval	FM approval	UL approval	Clamping range	Thread	Max. recom. static load (centr. tension)	Sales unit
Item	Item no.				D [mm]	A	$N_{rec}$ [kN]	[pcs]
TKL L M 8	064055	Yes	–	–	0 - 18	M8	1.20	50
TKL M 8	079687	Yes	–	–	0 - 23	M8	2.50	50
TKL L Ø 9	077605	Yes	–	–	0 - 18	Ø 9	1.20	50
TKL M10	079688	Yes	Yes	Yes	0 - 20	M10	2.50	50
TKL Ø 11	079689	Yes	Yes	Yes	0 - 20	Ø 11	2.50	50
TKL M12	020949	Yes	Yes	Yes	0 - 26	M12	3.50	50
TKL Ø 13	043275	Yes	Yes	Yes	0 - 26	Ø 13	3.50	50
SS-TKL M10/M12	048154	Yes	–	–	–	Ø 10 / Ø 12	–	25

# Beam clamp TKL hdg

Clamp hanger TKL hdg - the easy fixing solution without welding and drilling



Heavy drainage pipe on beam clamp

10

## Applications

- Clamp hangers allow for simple fixing by clamping direct to steel girders.
- Retaining straps SS-TKL are required for VdS equipment over Ø 65 mm.
- hdg: for indoor and outdoor application.

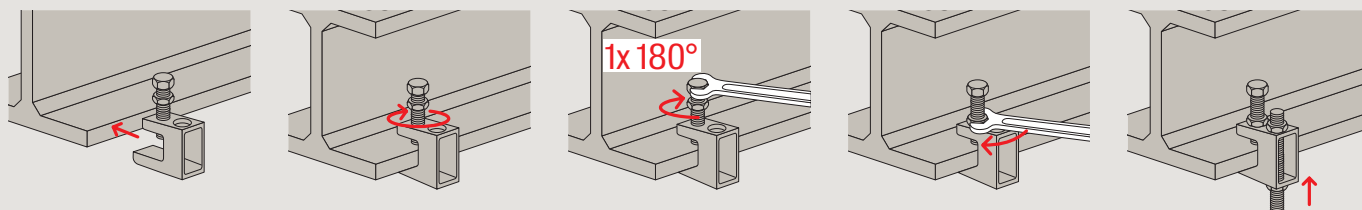
## Advantages

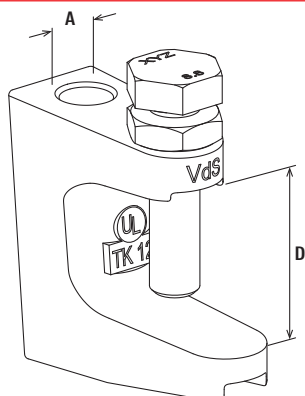
- The TKL design with its clamping screw allows for fixing to steel girders without the need for welding and drilling.
- The design of the clamping screw prevents it from slipping from the steel girder.
- VdS/FM/UL certificates guarantee independently tested safety.
- The solid TKL design guarantees a high load-bearing capacity.
- The TKL with thread mount guarantees quick and easy installation.

## Properties

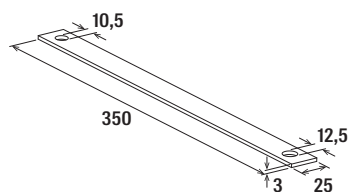
- Material TKL hdg: malleable cast iron GJMB-350-10 (M12: 460-6) acc. to DIN 1562
- Material bolt: steel 8.8 acc. to ISO 4017
- Material nut: steel acc. to ISO 4035, strength category 4
- Zinc plating: hot-dip galvanised
- Material SS-TKL: steel DX51D (material no. 1.0226) acc. to EN 10214
- Zinc plating SS-TKL: electro zinc-plated

## Installation TKL

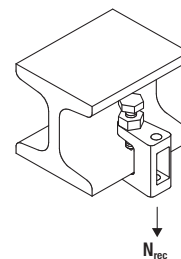




TKL



SS-TKL



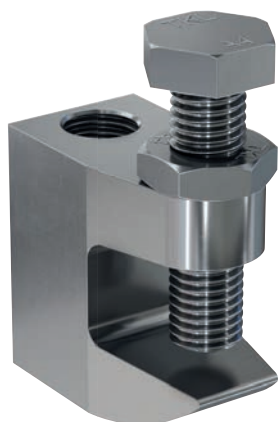
## Technical data

Item	Item no.	Clamping range D [mm]	Thread A	Max. recom. static load (centr. tension) $N_{rec}$ [kN]	Sales unit [pcs]
TKL L M8 hdg	564392	0 - 18	M8	1.20	50
TKL M10 hdg	564393	0 - 20	M10	2.50	50
TKL M12 hdg	564394	0 - 26	M12	3.50	50
SS-TKL M10/M12	048154	-	Ø 10 / Ø 12	-	25

- The galvanised retaining strap SS-TKL (item no. 48154) can be used for the hot-dip galvanised beam clamps.

# Beam clamp TKL A4

Clamp hanger TKL - the easy fixing solution without welding and drilling



Heavy drainage pipe on beam clamp

12

## Applications

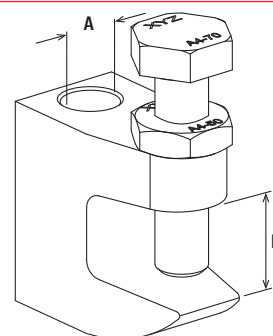
- Clamp hangers allow for simple fixing by clamping direct to steel girders.
- For indoor and outdoor applications and in environments with high stress to components due to corrosion.

## Advantages

- The TKL design with its clamping screw allows for fixing to steel girders without the need for welding and drilling.
- The design of the clamping screw prevents it from slipping from the steel girder.
- The solid TKL design guarantees a high load-bearing capacity.
- The TKL with through-hole allows for height adjustment after installation.

## Properties

- Material TKL: stainless steel A4 (material no. 1.4401 / AISI316) acc. to EN 10088-3
- Material bolt: stainless steel A4 acc. to DIN 933 with cup point (CP) acc. to EN ISO 4573
- Material nut: stainless steel A4 acc. to DIN 439



TKL

## Technical data

		Clamping range D [mm]	Thread A	Max. recom. static load (centr. tension) $N_{rec}$ [kN]	Sales unit [pcs]
Item	Item no.				
TKL Ø9 A4/AISI316	564395	0 - 18	Ø 9	1.20	50
TKL Ø11 A4/AISI316	564396	0 - 20	Ø 11	2.50	50
TKL Ø13 A4/AISI316	564397	0 - 26	Ø 13	3.50	50