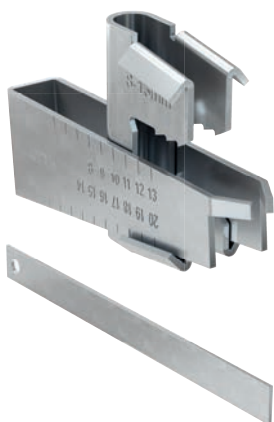


Beam clamp TKLS

Clamp hangers for easy fixing to steel girders with just one tool



Heavy steel pipe suspended on steel beam

9

Applications

- All kind of fixings by threaded rods to steel beams with sloping flange plate up to 14%.
- Retaining straps SS-TKLS are required for VdS equipment over Ø 65 mm.
- For use in dry interior areas.

Advantages

- The TKLS design with hammering wedge allows fixing to steel beams without the need of welding and drilling.
- The teeth of the TKLS effectively prevent from slipping off the steel beam.
- VdS and FM approval guarantees objectively tested functional safety.
- The TKLS made of steel guarantees highest load-bearing capacity.
- The TKLS allows pre-assembling of threaded rods and for retrospective height adjustment.

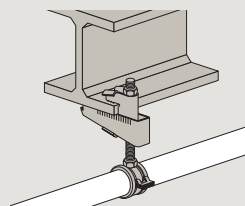
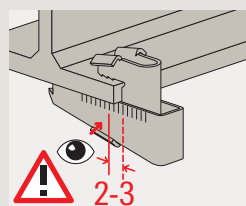
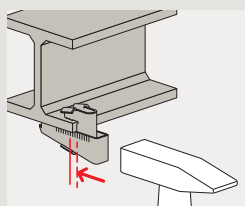
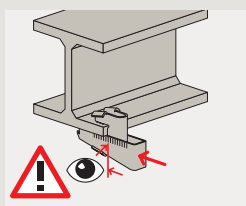
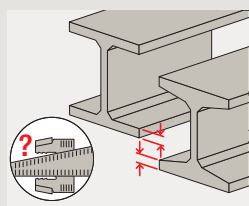
Properties

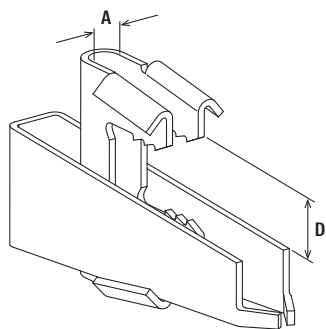
- Material TKLS: steel HX420LAD+ZAD (material no. 1.0935) acc. to DIN EN 10346
- Material SS-TKLS: steel DX51D (material no.1.0226) acc. to EN 10214
- Zinc plating: electro zinc-plated

Certificates / Features

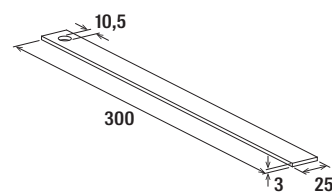


Installation TKLS





TKLS



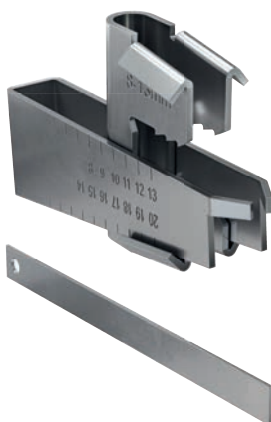
SS-TKLS

Technical data

		VdS approval	FM approval	Hole-Ø	Clamping range	Max. recom. static load (centr. tension)	Max. recom. pipe-Ø acc. VDS CEA 4001	Sales unit
Item	Item no.			A [mm]	D [mm]	N _{rec} [kN]		[pcs]
TKLS Ø 9	531134	Yes	–	9	8 - 20	2.00	≤ DN 50	25
TKLS Ø 11	531136	Yes	Yes	11	8 - 20	3.50	> DN 50 ≤ DN 100	25
TKLS Ø 13	531137	Yes	Yes	13	8 - 20	5.00	> DN 100 ≤ DN 200	25
TKLS Ø 17	531138	Yes	Yes	17	11 - 26	10.00	> DN 200 ≤ DN 250	16
SS-TKLS M10	566855	Yes	–	–	–	–	–	50
SS-TKLS M12	566856	Yes	–	–	–	–	–	50
SS-TKLS M16	566857	Yes	–	–	–	–	–	50

Beam clamp TKLS A4

Clamp hangers for easy fixing to steel girders with just one tool



Applications

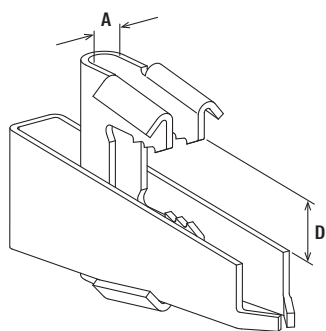
- All kind of fixings by threaded rods to steel beams with sloping flange plate up to 14%.
- Retaining straps SS-TKL are required for VdS equipment over Ø 65 mm.
- For indoor and outdoor applications and in environments with high stress to components due to corrosion.

Advantages

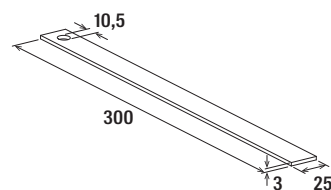
- The TKLS design with hammering wedge allows fixing to steel beams without the need of welding and drilling.
- The teeth of the TKLS effectively prevent from slipping off the steel beam.
- VdS and FM approval guarantees objectively tested functional safety.
- The TKLS made of steel guarantees highest load-bearing capacity.
- The TKLS allows pre-assembling of threaded rods and for retrospective height adjustment.

Properties

- Material: stainless steel A4 (material no. 1.4404 / AISI316L) acc. to EN 10088-3



TKLS



SS-TKLS

Technical data

		FM approval	VdS approval	Hole-Ø	Clamping range	Max. recom. static load (centr. tension)	Max. recom. pipe-Ø acc. VDS CEA 4001	Sales unit
Item	Item no.			A [mm]	D [mm]	N _{rec} [kN]		[pcs]
TKLS Ø 11 A4	564391	Yes	Yes	11	8 - 20	3.50	> DN 50 ≤ DN 100	25
SS-TKLS M10 A4/AISI316	564399	–	Yes	–	–	–	–	25