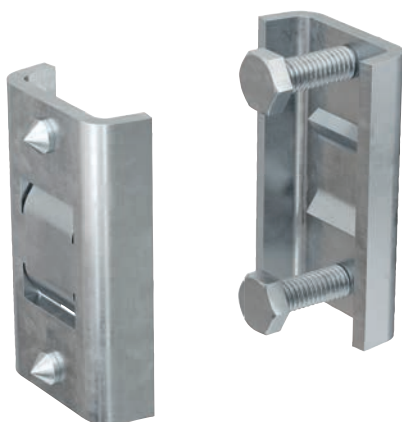


# Beam clamp FHBC hdg

Beam clamp FHBC - Beam clamp for the installation of FUS channels on steel girders

4



Pipe installation on steel girders

## Applications

- For installing FUS profile channels between the flanges of steel girders and U-profiles.
- Suitable for FUS channels FUS 41.
- For indoor and outdoor application.

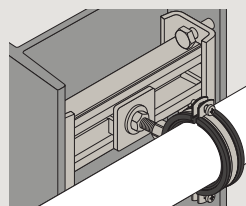
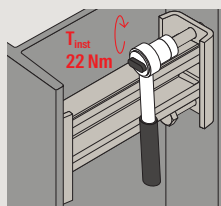
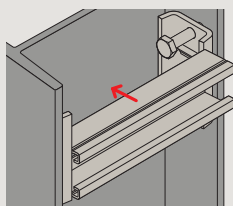
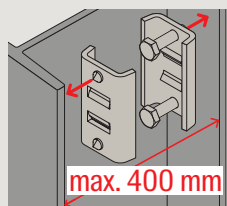
## Advantages

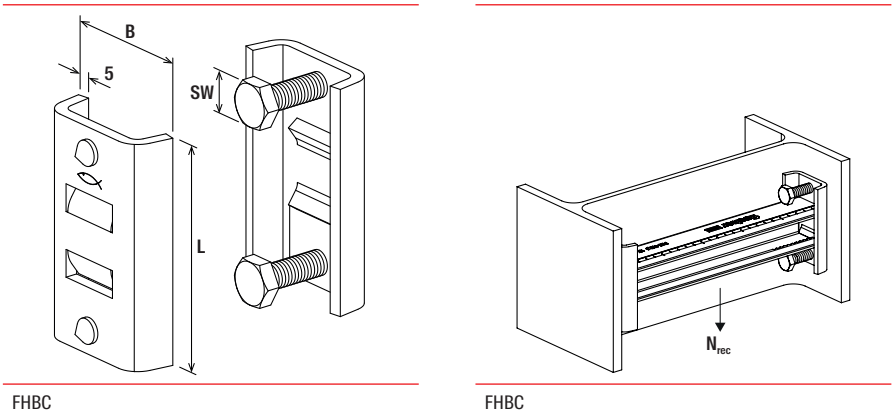
- Easy installation of FUS profile to the flanges of steel girders.
- The FHBC allows for the installation of FUS channels on steel girders without drilling.

## Properties

- Material: steel S235JR (material no. 1.0037) acc. to DIN EN 10025 (74074882)
- Zinc plating: hot-dip galvanised

## Installation FHBC





4

Technical data

Item	Item no.	Width	Length	Width across nut	Max. recom. static load (centr. tension)	Installation torque	Sales unit
		B [mm]	L [mm]	SW [mm]	N <sub>rec</sub> [kN]	T <sub>inst</sub> [Nm]	[pcs]
FHBC hdg	557375	55	90	17	3.60	22	10