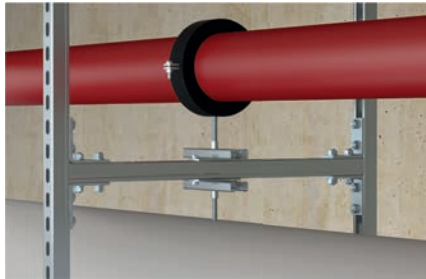
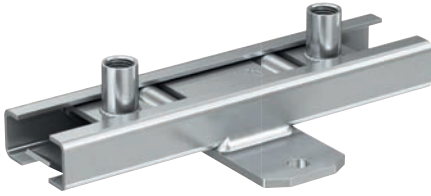


Axial roller slider heavy FASH

The heavy axial roller slider with single or double mount and combination connection thread



Media lines with thermal expansion



Media lines with thermal expansion

6

Applications

- Heating pipes
- Cooling lines
- Steam pipes
- Hot water and circulation pipes
- Media lines with thermal expansion
- For use in dry interior areas.

Certificates



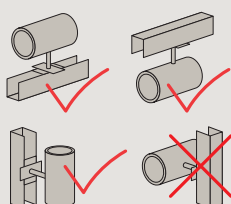
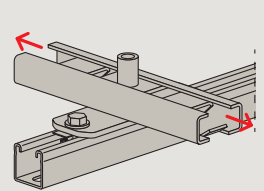
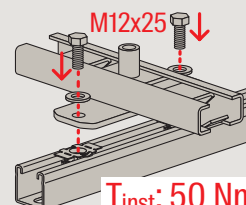
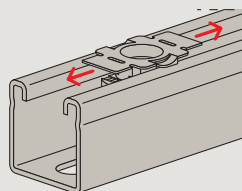
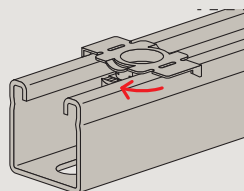
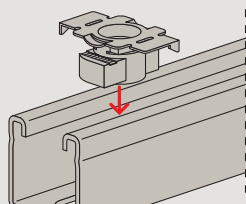
Advantages

- The fire test report according to MLAR R30 up to a maximum of R120 guarantees objectively tested safety of function.
- The FASH can be used flexibly, thanks to the application options as a standing or hanging slider and as a guide bearing on vertical pipelines.
- The low sliding friction of the two sliding rollers enables optimum force application at the fixed point.
- The large sliding path and the two sliding rollers allow large expansions to be accommodated without any problems.
- The base plate of the FASH is compatible with the FUS and FMS channel systems and allows fixing with one or two screws.
- A cross-slide function of the FASH1 or FASH2 is possible with the FCSM cross slider as well as with the FASH2.

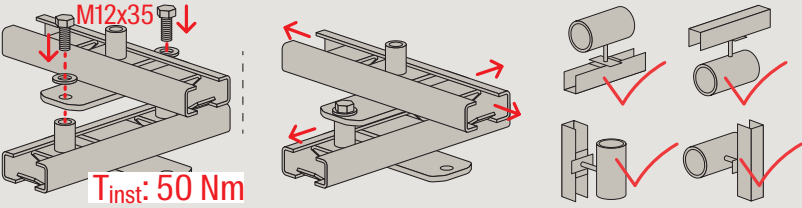
Properties

- Material: steel
- Zinc plating: electro zinc-plated
- Thermal capacity: -30 °C to +300 °C

Installation FASH on FUS channel

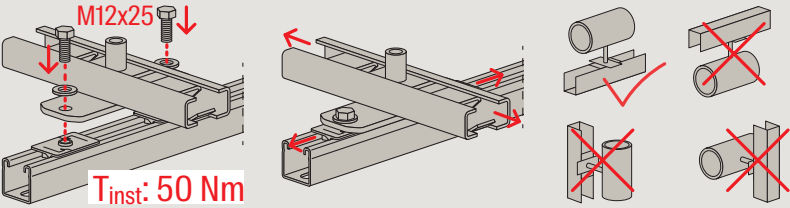


Cross-slide function through double mounting with FASH2 M12/16

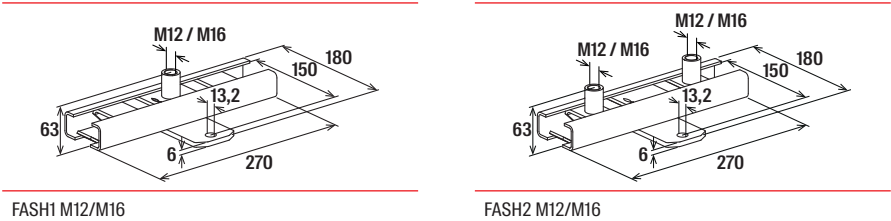
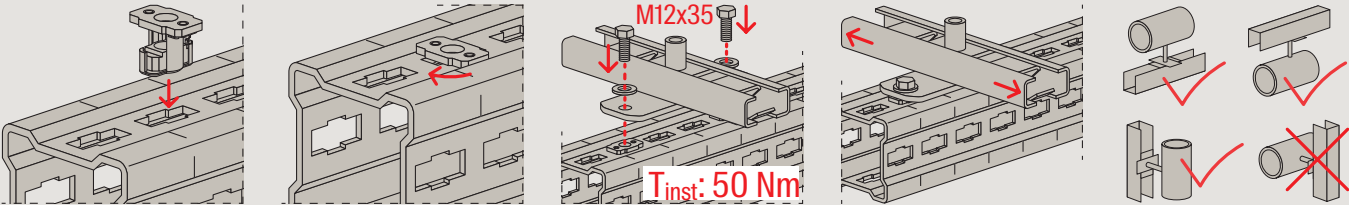


Cross-slide function with FCSM

6



Installation FASH on FMP channel



Technical data

		Fire test report	Thread	Length	Width	Height	Thick-ness	Max. recom- ended static load (suspen- ded)	Max. recom- ended static load (upright)	Static friction factor	Sliding friction factor	Max. recom- ended lever arm	Max. sliding distance	Sales unit
Item	Item no.		A	L [mm]	B [mm]	H [mm]	S [mm]	N _{rec} [kN]	N _{rec} [kN]	μ _h	μ _g	[mm]	[mm]	[pcs]
FASH1 M12/16	567953	–	M12 / M16	270	180	63	6.0	6.5	6.5	0.06	0.06	400	140	5
FASH2 M12/16	567954	Yes	M12 / M16	270	180	63	6.0	10.0	10.0	0.06	0.06	400	140	5

For load information under fire exposure, see chapter Basic knowledge.