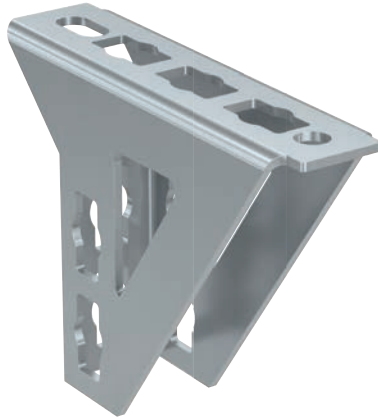


Angle bracket fire-tested PUWF

Construction element - Angle bracket fire-tested PUWF



Frame construction for ceiling suspension with one level



Frame construction for ceiling suspension with two levels

4

Applications

- Unique construction element for use as a connection to the substrate and for 90° angle connections.
- Allows the construction of applications with or without fire resistance requirements.
- For use in dry interior areas.

Certificates



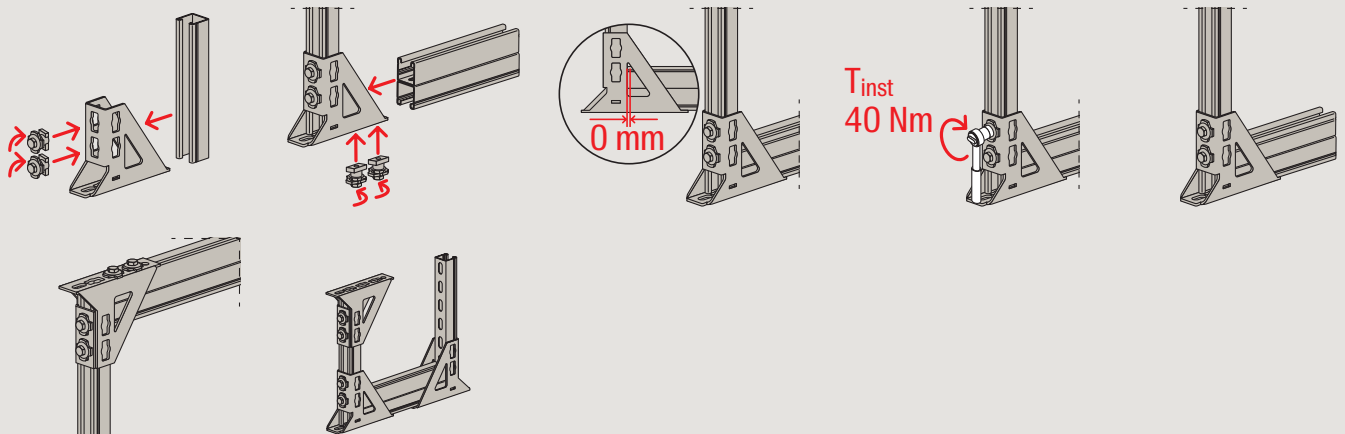
Advantages

- The fire test report in accordance with MLAR/EN1366 guarantees objectively tested functional safety.
- The stable design of the angle bracket allows high loads and ensures a secure hold. (use in pairs is recommended).
- Quick installation thanks to 90° rotation of the PFCN 41 push-through connector in the channel.
- The hole geometry allows the angle bracket to be attached to the FUS mounting channel in 3 positions with identical load-bearing capacity.

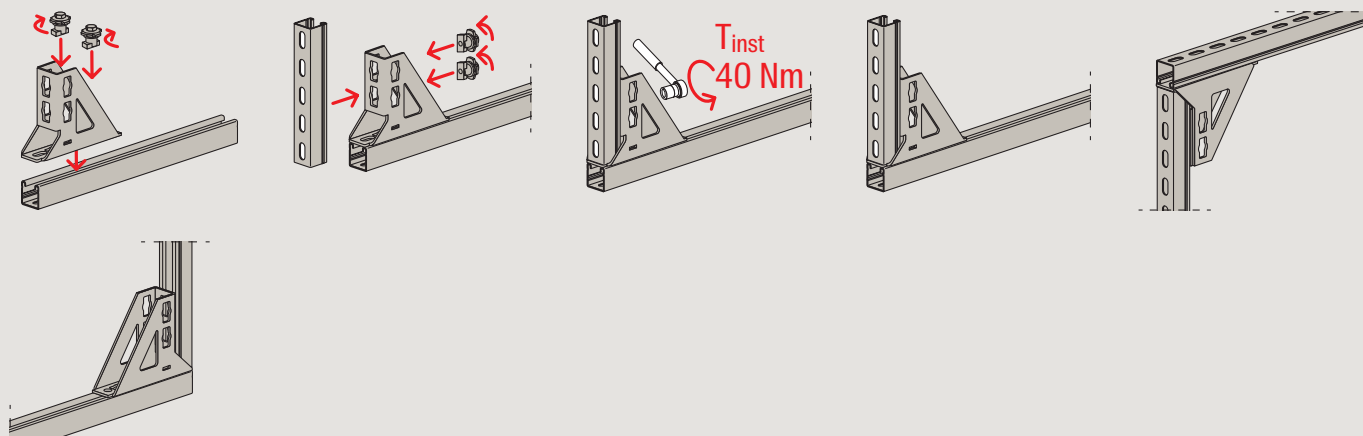
Properties

- Material: steel acc. to DIN EN 10025-2 (material no. 1.0038)
- Zinc plating: electro zinc-plated

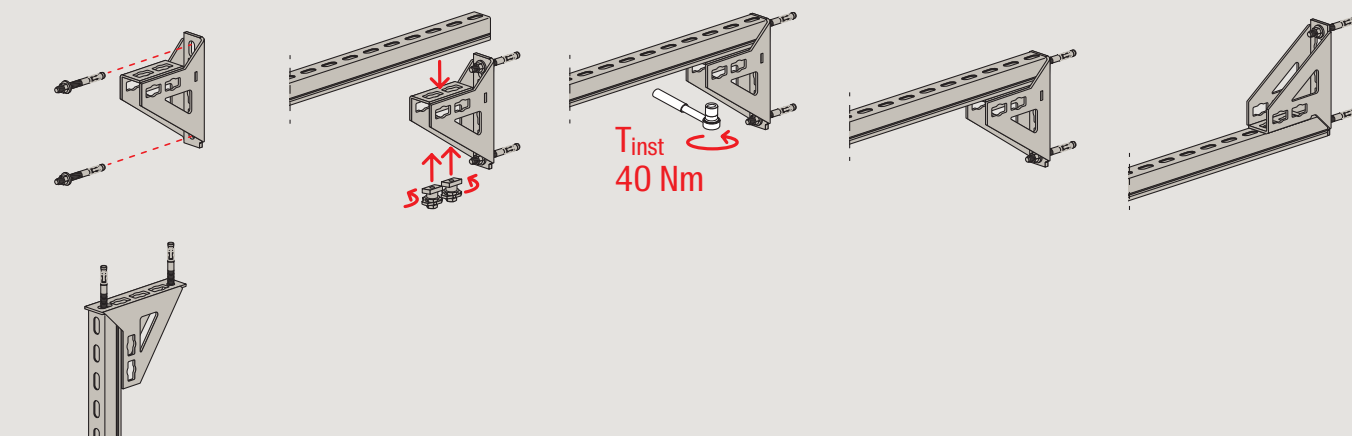
U-frame construction type 1



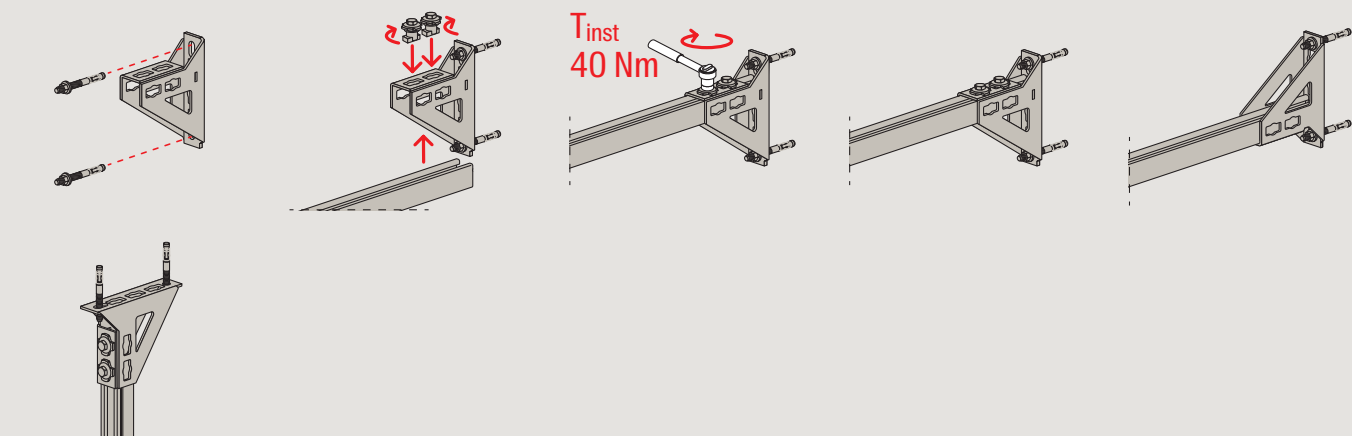
U-frame construction type 2



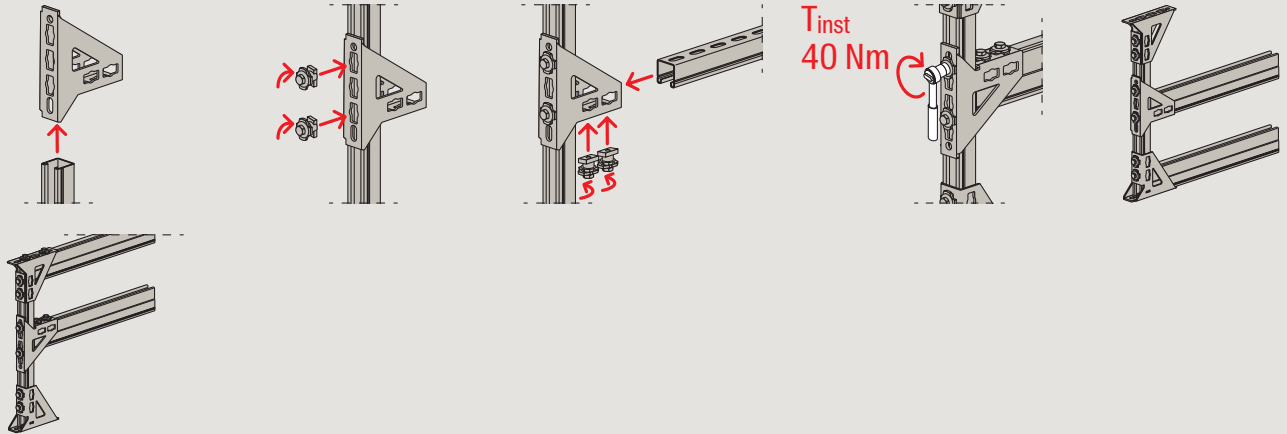
U-frame construction type 3



Substrate connection type 1

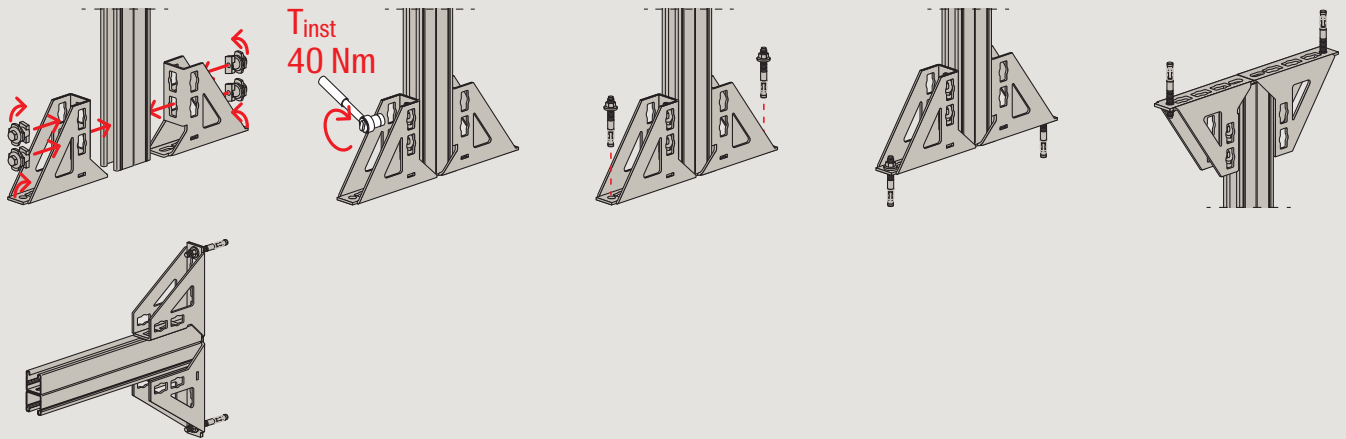


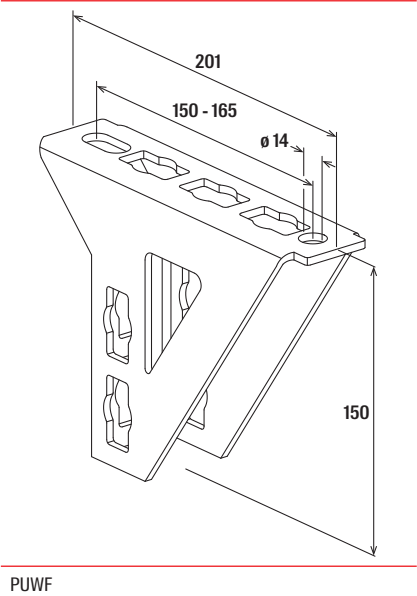
Substrate connection type 2



4

Substrate connection type 3

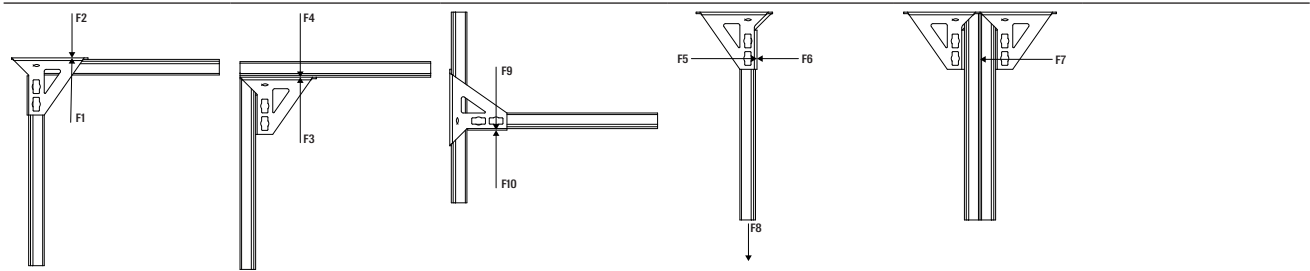




Technical data

	Item no.	Fire test report	For profile	Sales unit
Item				[pcs]
Angle bracket fire-tested PUWF	571851	Yes	FUS 21D, 41, 62, 41D	10

Loads



Item	Item no.	Max. recommended load									
		F1 _{rec} [kN]	F2 _{rec} [kN]	F3 _{rec} [kN]	F4 _{rec} [kN]	F5 _{rec} [kN]	F6 _{rec} [kN]	F7 _{rec} [kN]	F8 _{rec} [kN]	F9 _{rec} [kN]	F10 _{rec} [kN]
PUWF	571851	7,04	4,89	6,18	5,23	8,65	15,18	16,51	8,29	6,1	4,81

Please note: Load tables for fire testing see chapter „Basics - good to know“.