

Installation instruction – Minimum edge distances and minimum bolt spacing

- For the installation of the Cast-In Channels the required edge distances, anchor and channel bolt spacings must be respected.
- ETA values always have to be considered.
- fischer recommends the design software fixperience Channel-Fix for a safe and economical evaluation of load and on-site conditions.

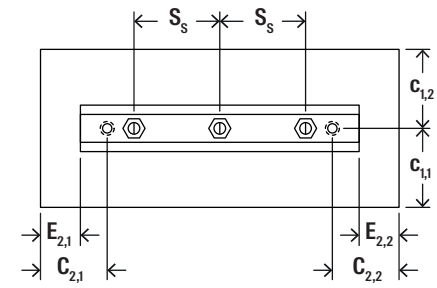
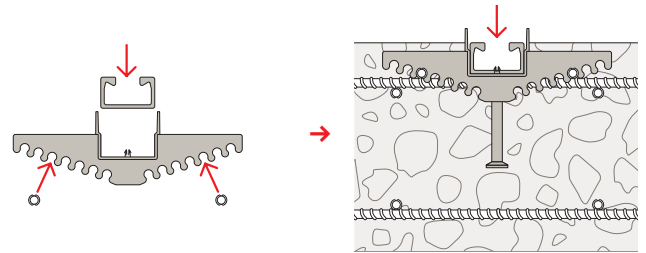


Figure: Minimum edge and bolt spacings

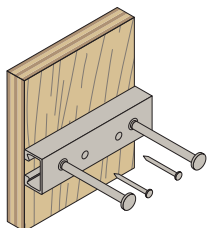
Profile	Thread M	Min. spacing $S_{s,min}$ [mm]	Min. edge spacing $C_{1,min}$ [mm]	Min. edge spacing $C_{2,min}$ [mm]	Min. end spacing E_{min} [mm]
28/15	M8	40	40	40	15
28/15	M10	50	40	40	15
28/15	M12	60	40	40	15
38/17	M10	50	50	50	25
38/17	M12	60	50	50	25
38/17	M16	80	50	50	25
40/25	M12	60	50	50	25
40/25	M16	80	50	50	25
49/30	M12	60	75	75	50
49/30	M16	80	75	75	50
49/30	M20	100	75	75	50
54/33	M12	60	100	100	75
54/33	M16	80	100	100	75
54/33	M20	100	100	100	75

Channel inward installation options.

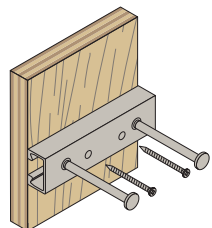


Attach the Cast-in Channel to the plastic clip

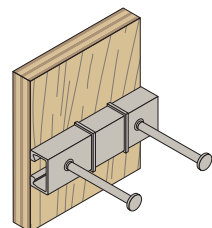
Attach the clip to the rebar



1. Nail fixing



2. Self drilling screw fixing



3. Clamp fixing