

fischer FFB-VS VentiStop cavity barrier

Substrate: Concrete / solid masonry; Perforated masonry, Masonry wall assembly



up to 2 hr

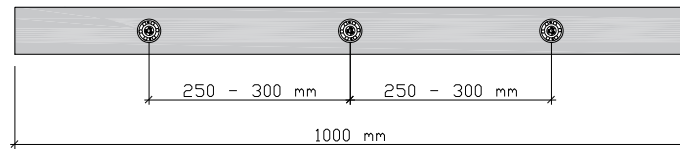
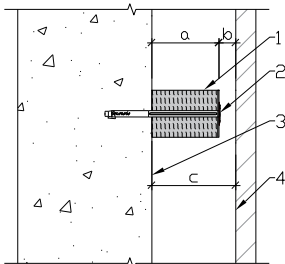


up to 45 Min

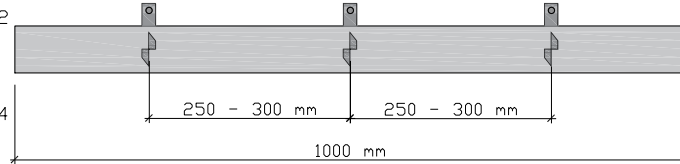
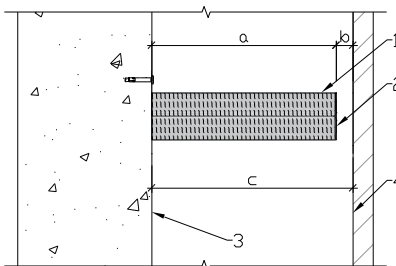


Application

Approvals:
ASFP – Technical Guidance
Document 19



Key:
1. FFB-VS
2. Fixing
3. Wall
4. Cladding material



FFB-VS VentiStop - open state horizontal cavity barriers

Barrier type	VentiStop item art. no.	VentiStop size Max. (a) [mm]*	Max Ventilated Gap (b) [mm]	To suite cavity void width (c) [mm]	Type Fixings [mm]**	Fixings item art. no.	Classification
FFB-VS50/51 - 100	#545628	25 - 50	50	75 - 100	DHM 40 A2 DHM 70 A2	#536262 #536264	E 120 EI 45
FFB-VS50/101 - 150	#545629	51 - 100	50	101 - 150	DHM 70 A2 DHM 130 A2	#536264 #536266	E 120 EI 45
FFB-VS50/151 - 200	#545630	101 - 150	50	151 - 200	DHM 130 A2 DHM 160 A2	#536266 #536267	E 120 EI 45
FFB-VS50/201 - 250	#545631	151 - 200	50	201 - 250	DHM 160 A2 DHM 210 A2	#536267 #536268	E 120 EI 45
FFB-VS50/251 - 300	#545632	201 - 250	50	251 - 300	DHM 210 A2 DHM 260 A2	#536268 #551869	E 60 EI 45
FFB-VS50/301 - 350	#545633	251 - 300	50	301 - 350	DHM 260 A2 Multi Purpose Bracket A2	#551869 #551868	E 60 EI 45
FFB-VS50/351 - 400	#545634	301 - 350	50	351 - 400	Multi Purpose Bracket A2	#551868	E 60 EI 45
FFB-VS50/401 - 450	#545635	351 - 400	50	401 - 450	Multi Purpose Bracket A2	#551868 #551954	E 60 EI 45

*Product cutting is possible in steps of up to 1 mm

**Barrier <260 mm DHM A2 / barriers >260mm Multi Purpose Bracket A2 (Consider substrate)

Please note the other accessories, see homepage

The instructions and information within this document have been produced with the greatest possible care. However, any liability of fischerwerke GmbH & Co. KG for any errors in this document and for the consequences of such is excluded. Likewise, any liability of fischerwerke GmbH & Co. KG for direct or consequential damages arising in connection with the use of the stated products is excluded. All applications of the stated products have always to comply with the related approvals and installation instructions as well as applicable regulations of the relevant authorities at site.