

# fischer FFB-VS VentiStop cavity barrier

Substrate: Concrete / solid masonry; Perforated masonry, Masonry wall assembly



up to 2 hr

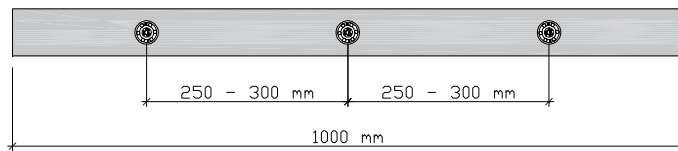
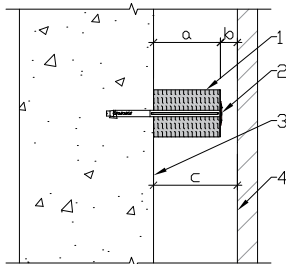


up to 2 hr

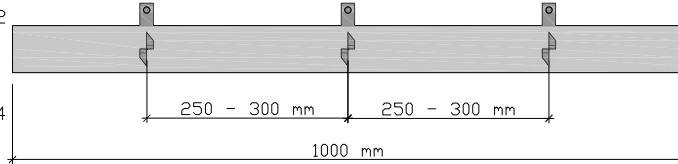
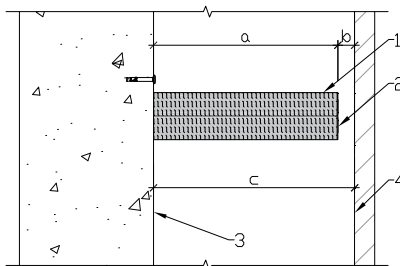


## Application

Approvals:  
ASFP – Technical Guidance  
Document 19



Key:  
1. FFB-VS  
2. Fixing  
3. Wall  
4. Cladding material



### FFB-VS VentiStop - open state horizontal cavity barriers

Barrier type	VentiStop item art. no.	VentiStop size Max. (a) [mm]*	Max Ventilated Gap (b) [mm]	To suite cavity void width (c) [mm]	Type Fixings [mm]***	Fixings item art. no.	Classification
FFB-VS/25 - 50	#521520	25	25	50	DHM 40 A2	#536262	EI 120
FFB-VS/51 - 100	#521521	26 - 75	25	51 - 100	DHM 40 A2 DHM 100 A2	#536262 #536265	EI 120
FFB-VS/101 - 150	#521522	76 - 125	25	101 - 150	DHM 100 A2 DHM 130 A2	#536265 #536266	EI 120
FFB-VS/151 - 200	#521523	126 - 175	25**	151 - 200	DHM 130 A2 DHM 210 A2	#536266 #536268	E 120 EI 60
FFB-VS/201 - 250	#521524	176 - 225	25**	201 - 250	DHM 210 A2 DHM 260 A2	#536268 #536269	E 120 EI 60
FFB-VS/251 - 300	#521525	226 - 275	25**	251 - 300	DHM 260 A2 Multi Purpose Bracket A2	#536269 #551868	E 120 EI 60
FFB-VS/301 - 350	#521526	276 - 325	25**	301 - 350	Multi Purpose Bracket A2	#551868	E 120 EI 60
FFB-VS/351 - 400	#521527	326 - 375	25**	351 - 400	Multi Purpose Bracket A2	#551868	E 120 EI 60
FFB-VS/401 - 450	#521528	376 - 425	25**	401 - 450	Multi Purpose Bracket A2	#551954	E 120 EI 60

\*Product cutting is possible in steps of up to 1 mm

\*\* Can be used in ventilation gaps up to 38 mm in specific applications. If used in larger ventilation gaps, VentiStop product size varies.

\*\*\*Barrier <260 mm DHM A2 / barriers >260mm Multi Purpose Bracket A2 (Consider substrate)

Please note the other accessories, see homepage

The instructions and information within this document have been produced with the greatest possible care. However, any liability of fischerwerke GmbH & Co. KG for any errors in this document and for the consequences of such is excluded. Likewise, any liability of fischerwerke GmbH & Co. KG for direct or consequential damages arising in connection with the use of the stated products is excluded. All applications of the stated products have always to comply with the related approvals and installation instructions as well as applicable regulations of the relevant authorities at site.

fischerwerke GmbH & Co. KG

Klaus-Fischer-Straße 1 · 72178 Waldachtal, Germany · T +49 7443 12 – 0 · info@fischer.de · www.fischer-international.com