

PRESTATIEVERKLARING

DoP 0251

voor fischer termoz CN 8 / fischer termoz CN 8 R / fischer termoz CNplus 8 (Kunststof verbindingen voor gebruik in beton en metselwerk)

NL

1. Unieke identificatiecode van het producttype: DoP 0251
2. Beoogd(e) gebruik(en): Ingespijkerd kunststof anker voor bevestiging van externe thermische isolatiecompositiesystemen (ETICS) met pleisterwerk in beton en metselwerk, zie bijlage, met name de bijlagen B1 - B3.
3. Fabrikant: fischerwerke GmbH & Co. KG, Klaus-Fischer-Str. 1, 72178 Waldachtal, Duitsland
4. Gemachtigde: -
5. Het systeem of de systemen voor de beoordeling en verificatie van de prestatiebestendigheid: 2+
6. Europees beoordelingsdocument: EAD 330196-01-0604
Europese technische beoordeling: ETA-09/0394; 2017-12-19
Technische beoordelingsinstantie: DIBt- Deutsches Institut für Bautechnik
Aangemelde instantie(s): 2873 TU Darmstadt
7. Aangegeven prestatie(s):
Veilig gebruik (BWR 4)

Karakteristiek draagvermogen:	Karakteristieke weerstand onder trekbelasting:	Bijlages C1, C2
	Minimale randafstand:	Bijlage B2
	Minimale hart op hart afstand:	Bijlage B2
Verplaatsingen:	Trekbelasting met partiële factor:	Bijlage C4
	Verplaatsingen:	Bijlage C4
Plaatstijfheid:	Diameter van de plaat van de plug:	Bijlage C4
	Belastingsweerstand van de plug:	Bijlage C4
	Plaatstijfheid:	Bijlage C4

Energiebesparing en warmtebehoud (BWR 6)

Warmtedoorgangscoefficiënt:	Puntwarmtedoorgangscoefficiënt van de plug:	Bijlage C3
	Isolerende laagdikte van de ETICS:	Bijlage C3
8. Geëigende technische documentatie en/of specifieke technische documentatie: -

De prestaties van het hierboven omschreven product zijn conform de aangegeven prestaties. Deze prestatieverklaring wordt in overeenstemming met Verordening (EU) nr. 305/2011 onder de exclusieve verantwoordelijkheid van de hierboven vermelde fabrikant verstrekt.

Ondertekend voor en namens de fabrikant door:

Dr. Oliver Geibig, Managing Director Business Units & Engineering
Tumlingen, 2021-01-08

Jürgen Grün, Managing Director Chemistry & Quality

Deze DoP is opgesteld in meerdere talen. In het geval van geschillen over de interpretatie zal de Engelse tekst altijd prevaleren.

Het aanhangsel bevat vrijwillige en aanvullende informatie in het Engels die de (taal-neutraal gespecificeerde) wettelijke vereisten overschrijdt.

Specific Part

1 Technical description of the product

The fischer nailed-in anchor termoz CN 8 and termoz CNplus 8 consists of an anchor sleeve with an enlarged shaft made of polypropylene (virgin material), an insulation plate made of glass fibre reinforced polyamide (virgin material) (termoz CN 8 / 250-390) and a special compound nail consisting of two parts, one made of glass fibre reinforced polyamide for the shaft element and the other part made of galvanised steel.

The specific nail for the anchor types termoz CN 8 / 250 – 390 and termoz CN 8 R / 250 – 310 is made of galvanized steel which is used together with a separate plastic cylinder made of glass fibre reinforced polyamide.

The serrated expanding part of the anchor sleeve is slotted.

The anchor may in addition be combined with the anchor plates DT 90, DT 110 and DT 140.

The product description is given in Annex A.

2 Specification of the intended use in accordance with the applicable European Assessment Document

The performances given in Section 3 are only valid if the anchor is used in compliance with the specifications and conditions given in Annex B.

The verification and assessment methods on which this European Technical Assessment is based lead to the assumption of a working life of the anchor of at least 25 years. The indications given on the working life cannot be interpreted as a guarantee given by the producer, but are to be regarded only as a means for choosing the right products in relation to the expected economically reasonable working life of the works.

3 Performance of the product and references to the methods used for its assessment

3.1 Safety and accessibility in use (BWR 4)

Essential characteristic	Performance
Characteristic tension resistance	See Annex C 1 and C 2
Edge distances and spacing	See Annex B 2
Plate stiffness	See Annex C 4
Displacements	See Annex C 4

3.2 Energy economy and heat retention (BWR 6)

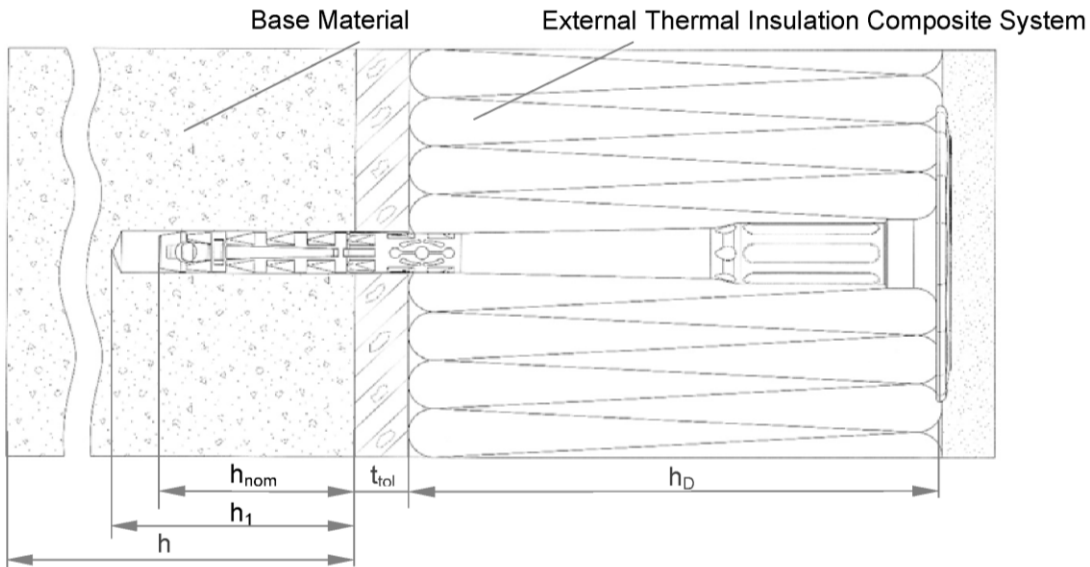
Essential characteristic	Performance
Point thermal transmittance	See Annex C 3

4 Assessment and verification of constancy of performance (AVCP) system applied, with reference to its legal base

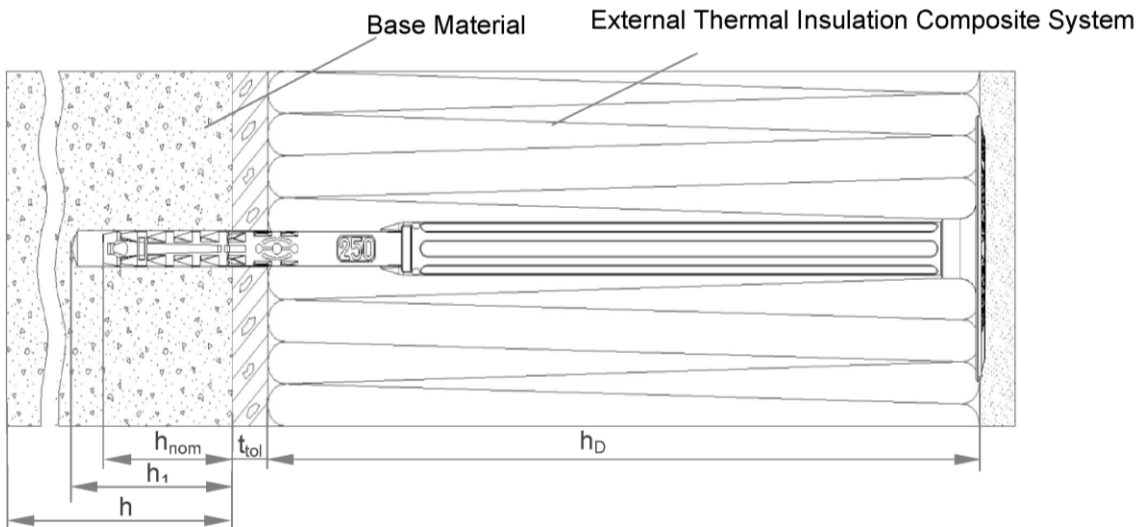
In accordance with EAD No. 330196-01-0604, the applicable European legal act is: [97/463/EC].

The system to be applied is: 2+

termoz CN 8 / 110 – 230 / termoz CNplus 8 / 110 – 230 – flush mounted



termoz CN 8 / 250 – 390 / termoz CN 8 R / 250 – 310 / termoz CNplus 8 / 250-390 – flush mounted



Legend

- h_{nom} = Overall plastic anchor embedment depth in the base material
- h_1 = Depth of drilled hole to deepest point
- h = Thickness of member (wall)
- h_D = Thickness of insulation material
- t_{tol} = Thickness of equalizing layer or non-load bearing coating

fischer termoz CN 8 | fischer termoz CN 8 R | fischer termoz CNplus 8

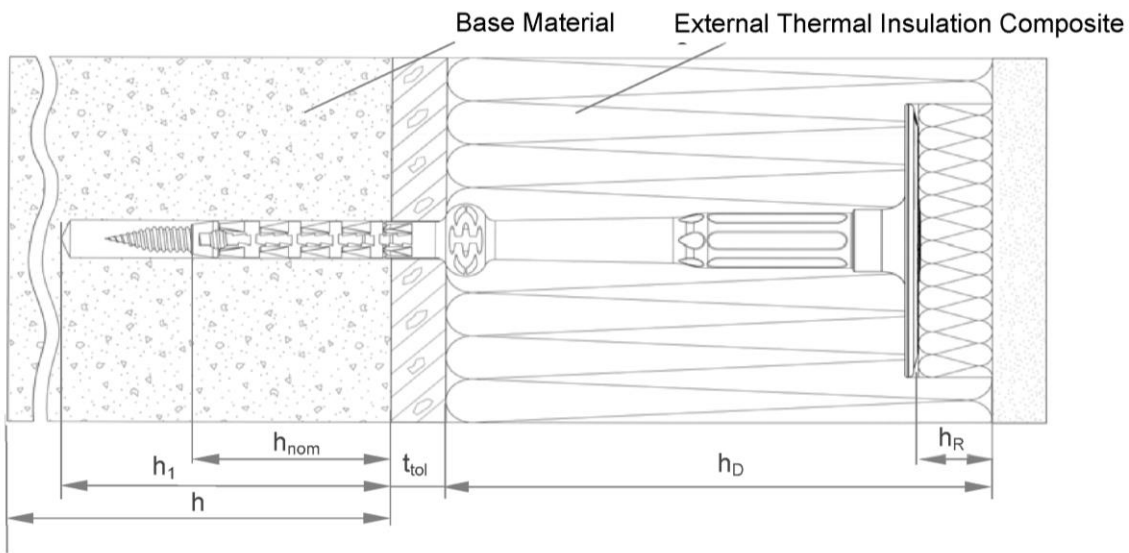
Product description

Installed anchor – flush-mounted

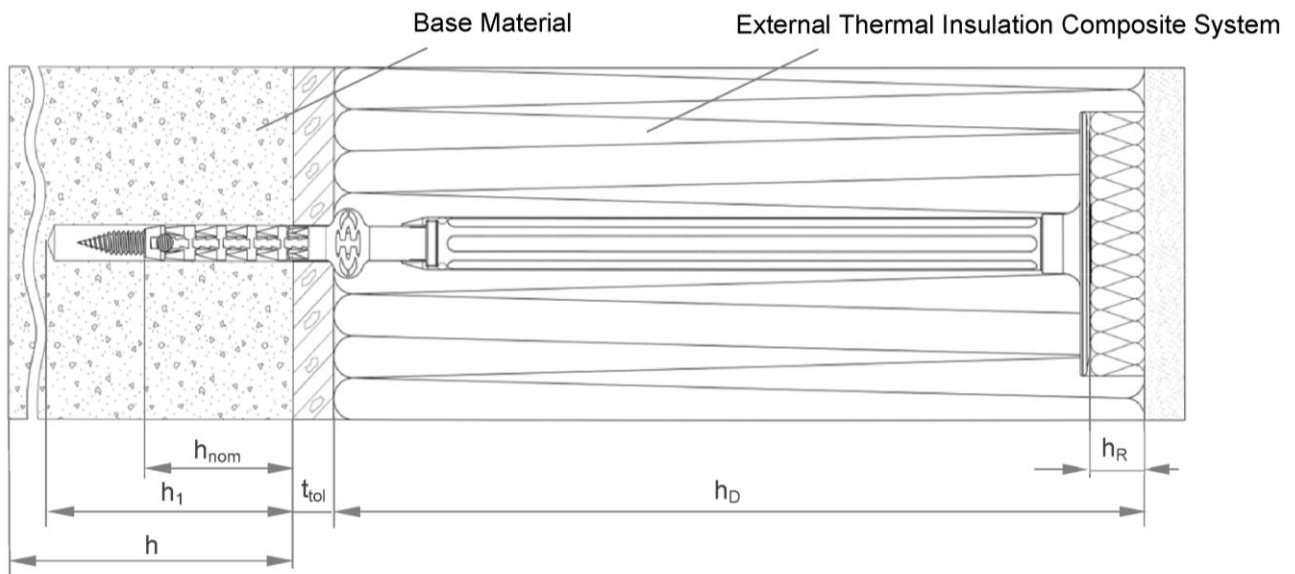
Annex A1

Appendix 2 / 18

termoz CNplus 8 / 110 – 230 – countersunk mounted



termoz CNplus 8 / 250 – 390 – countersunk mounted



Legend

- h_{nom} = Overall plastic anchor embedment depth in the base material
- h_1 = Depth of drilled hole to deepest point
- h = Thickness of member (wall)
- h_D = Thickness of insulation material
- h_R = Thickness of insulation cap
- t_{toi} = Thickness of equalizing layer or non-load bearing coating

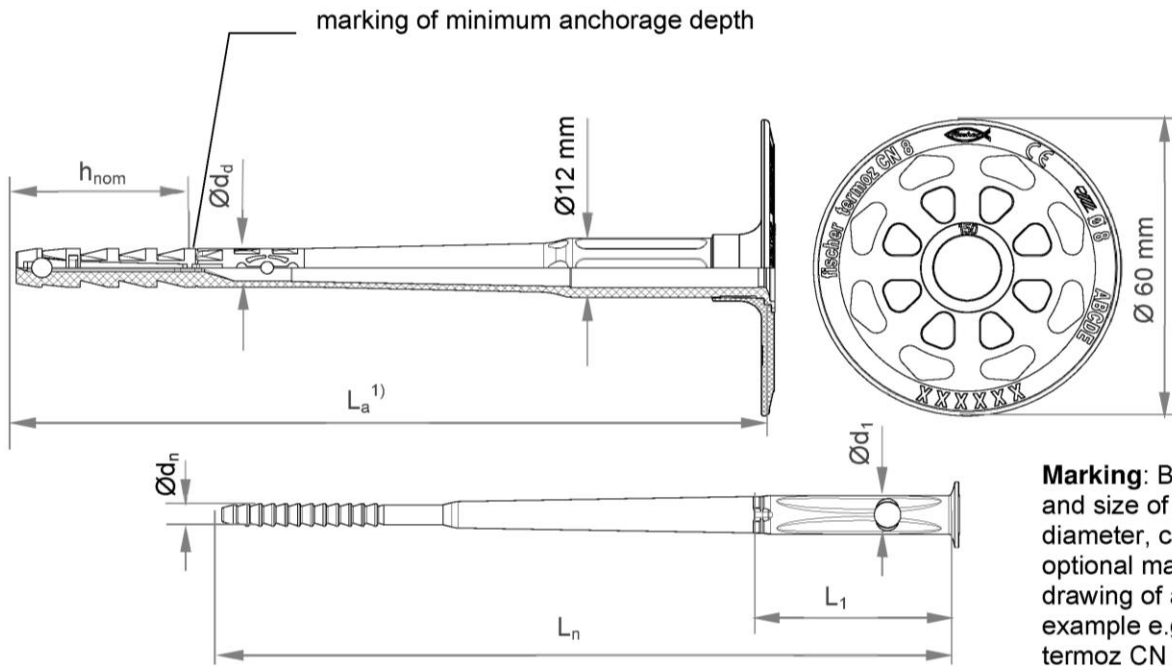
fischer termoz CN 8 | fischer termoz CN 8 R | fischer termoz CNplus 8


Product description

Installed anchor – countersunk mounted

Annex A2

termoz CN 8 / 110-230



Marking: Brand, name and size of anchor, diameter, categories, optional markings see drawing of anchor plate, example e.g.  termoz CN 8 ABCDE

¹⁾ Various length of the anchors are possible

e.g. for termoz CN 8 / 110-230:
 $110 \text{ mm} \geq L_a \leq 230 \text{ mm}$
 $L_a = L_n + 4 \text{ mm}$

Determination of maximum thickness of insulation: $h_D = L_a - h_{nom} - t_{tol}$

e.g. for termoz CN 8x150:

$L_a = 148 \text{ mm}$, $h_{nom} = 35 \text{ mm}$, $t_{tol} = 10 \text{ mm}$

$h_D = 148 - 35 - 10 \approx 100$

Table A3.1: Dimensions termoz CN 8 / 110-230

Anchor type	Anchor sleeve		Specific compound nail		
	$\text{Ø } d_d$ [mm]	h_{nom} [mm]	$\text{Ø } d_n$ [mm]	L_1 [mm]	$\text{Ø } d_1$ [mm]
termoz CN 8 / 110-230	8	35/55 ²⁾	4,5	40	8

²⁾ Only for use cat. E

fischer termoz CN 8 | fischer termoz CN 8 R | fischer termoz CNplus 8

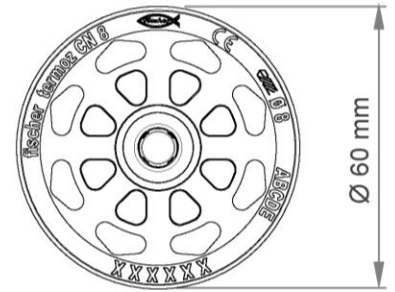
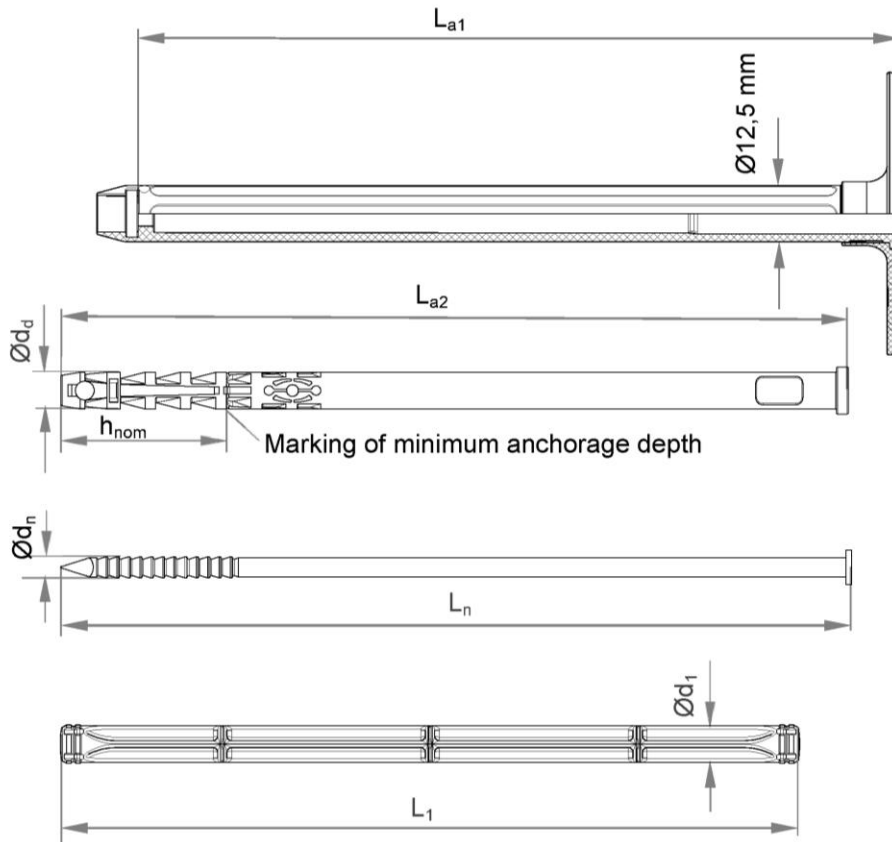
Product description


Dimensions termoz CN8 / 110-230

Annex A3

Appendix 4 / 18

termoz CN 8 / 250 – 390



Marking: Brand, name and size of anchor, diameter, categories, optional markings see drawing of anchor plate, example e.g.  termoz CN 8, ABCDEF

Various lengths of the anchors are possible:

e.g. for termoz CN 8 / 250 – 390:

$$250 \text{ mm} \geq L_{a1} + L_{a2} \leq 390 \text{ mm}$$

$$L_a = L_{a1} + L_{a2} = L_n + 160,5 \text{ mm}$$

Determination of maximum thickness of insulation:

$$h_D = L_a - h_{nom} - t_{tol}$$

e.g. for termoz CN 8x330:

$$L_a = 328 \text{ mm}, h_{nom} = 35 \text{ mm}, t_{tol} = 10 \text{ mm}$$

$$h_D = 328 - 35 - 10 \approx 280 \text{ mm}$$

Table A4.1: Dimensions termoz CN 8 / 250 – 390

Anchor type	Shaft		Anchor sleeve		Nail		Plastic cylinder	
	L_{a1} [mm]	$\text{Ø } d_d$ [mm]	h_{nom} [mm]	L_{a2} [mm]	$\text{Ø } d_n$ [mm]	L_n [mm]	L_1 [mm]	$\text{Ø } d_1$ [mm]
termoz CN 8 / 250 – 390	161	8	35/55 ¹⁾	87 - 247	4,5	$(L_{a1}+L_{a2}) - 160,5$	157	8

¹⁾ Only for use cat. E

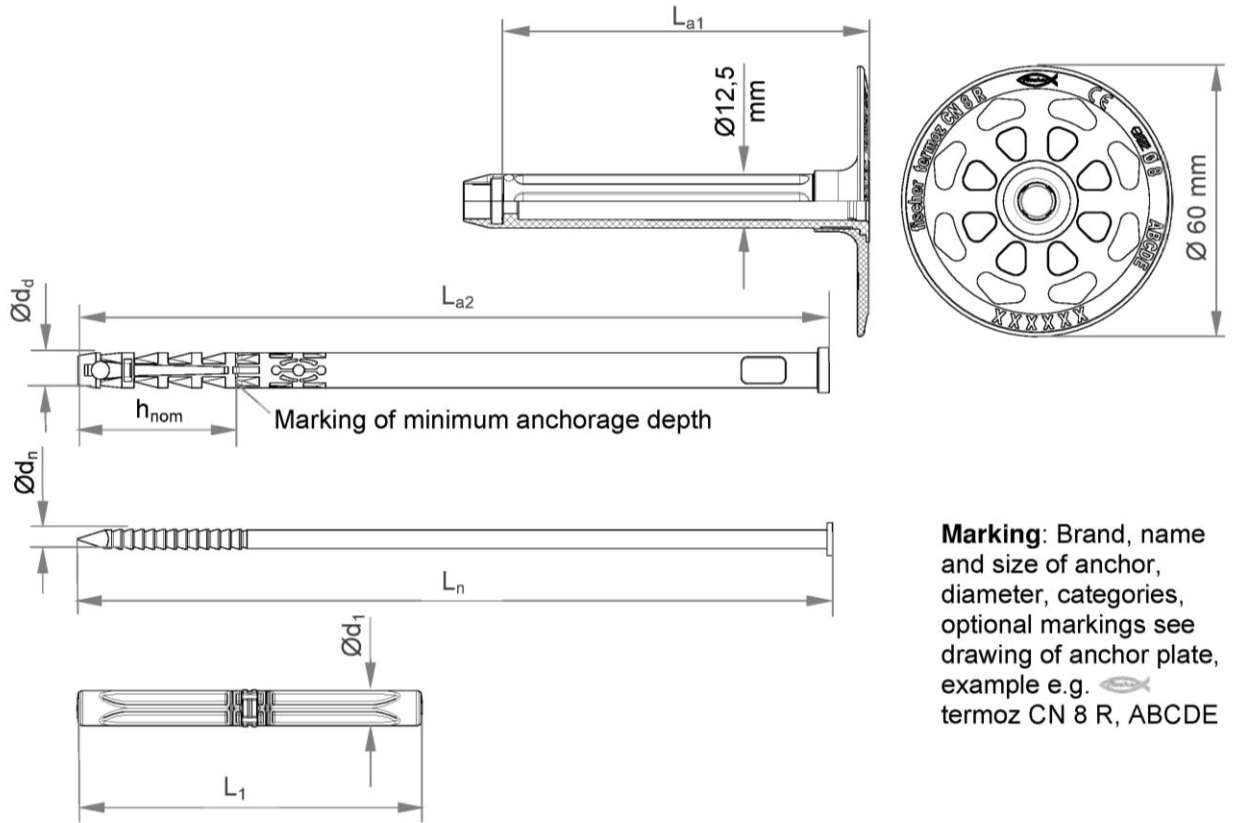
fischer termoz CN 8 | fischer termoz CN 8 R | fischer termoz CNplus 8


Product description

Dimensions termoz CN8 / 250-390

Annex A4

termoz CN 8 R / 250 – 310



Marking: Brand, name and size of anchor, diameter, categories, optional markings see drawing of anchor plate, example e.g.  termoz CN 8 R, ABCDE

Various lengths of the anchors are possible:

e.g. for termoz CN 8 R / 250 – 310:
 $250 \text{ mm} \geq L_{a1} + L_{a2} \leq 310 \text{ mm}$
 $L_a = L_{a1} + L_{a2} = L_n + 80,5 \text{ mm}$

Determination of maximum thickness of insulation:

$$h_D = L_a - h_{nom} - t_{tol}$$

e.g. for termoz CN 8x250 R:

$$L_a = 248 \text{ mm}, h_{nom} = 35 \text{ mm}, t_{tol} = 10 \text{ mm}$$

$$h_D = 248 - 35 - 10 \approx 200 \text{ mm}$$

Table A5.1: Dimensions termoz CN 8 R / 250 – 310

Anchor type	Shaft		Anchor sleeve		Nail		Plastic cylinder	
	L_{a1} [mm]	$\varnothing d_d$ [mm]	h_{nom} [mm]	L_{a2} [mm]	$\varnothing d_n$ [mm]	L_n [mm]	L_1 [mm]	$\varnothing d_1$ [mm]
termoz CN 8 R / 250 – 310	81	8	35/55 ¹⁾	167 - 247	4,5	$(L_{a1}+L_{a2}) - 80,5$	77	8

¹⁾ Only for use cat. E

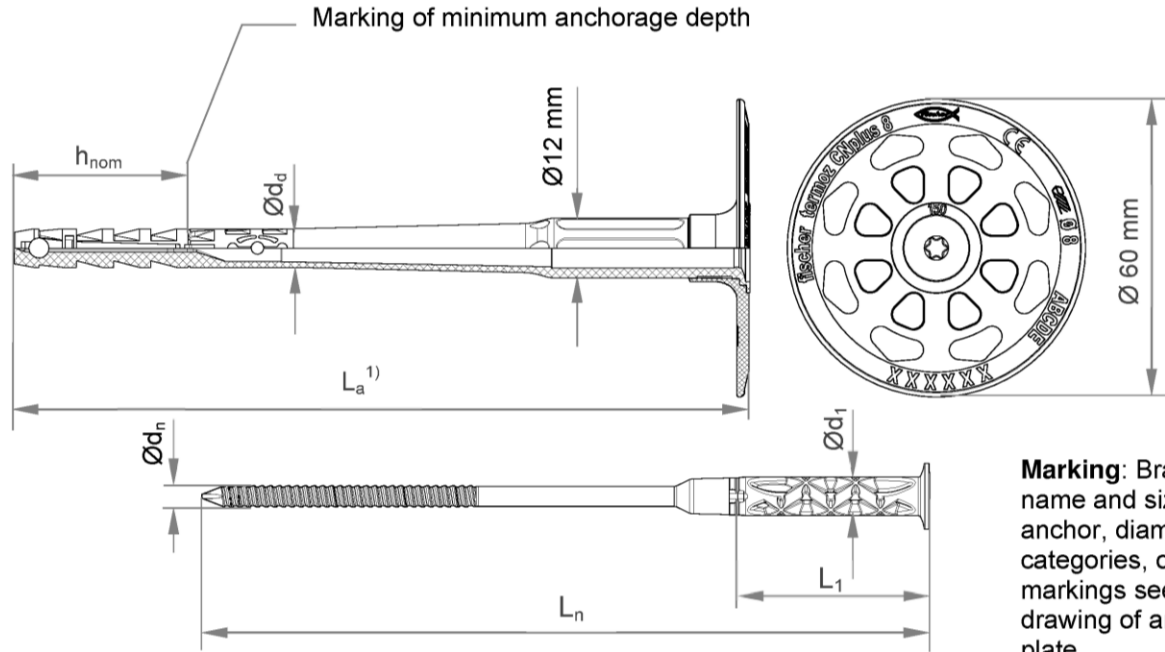
fischer termoz CN 8 | fischer termoz CN 8 R | fischer termoz CNplus 8


Product description

Dimensions termoz CN8 R / 250-310

Annex A5

termoz CNplus 8 / 110–230



Marking: Brand, name and size of anchor, diameter, categories, optional markings see drawing of anchor plate, example e.g.  termoz CNplus 8

¹⁾ Various lengths of the anchors are permissible:

e.g. for termoz CNplus 8 / 110 – 230:

$$110 \text{ mm} \geq L_a \leq 230 \text{ mm}$$

$$L_a = L_n + 1,5 \text{ mm}$$

Determination of maximum thickness of insulation: $h_D = L_a - h_{nom} - t_{tol}$

e.g. for termoz CNplus 8x150:

$$L_a = 148 \text{ mm}, h_{nom} = 35 \text{ mm}, t_{tol} = 10 \text{ mm}$$

$$h_D = 148 - 35 - 10 \approx 100$$

Table A6.1: Dimensions termoz CNplus 8 / 110–230

Anchor type	Anchor sleeve		Specific compound nail			
	$\text{Ø } d_d$ [mm]	h_{nom} [mm]	$\text{Ø } d_n$ [mm]	L_n [mm]	L_1 [mm]	$\text{Ø } d_1$ [mm]
termoz CNplus 8 / 110-230	8	35/55 ¹⁾	4,3	$L_a - 1,5$	40	8

¹⁾ Only for use cat. D & E

fischer termoz CN 8 | fischer termoz CN 8 R | fischer termoz CNplus 8

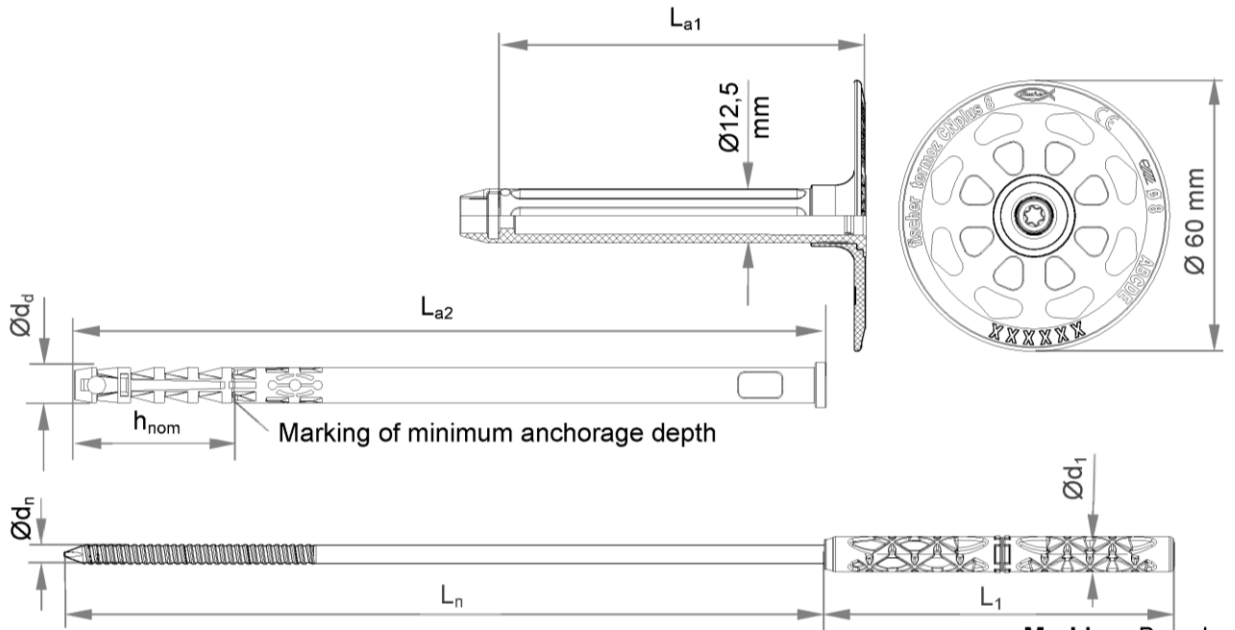
Product description


Dimensions termoz CNplus 8 / 110-230

Annex A6

Appendix 7 / 18

termoz CNplus 8 / 250–310



Marking: Brand, name and size of anchor, diameter, categories, optional markings see drawing of anchor plate, example e.g.  termoz CNplus 8 ABCDE

Various lengths of the anchors are possible:

e.g. for termoz CN plus / 250 – 310:

$$250 \text{ mm} \geq L_{a1} + L_{a2} \leq 310 \text{ mm}$$

$$L_a = L_{a1} + L_{a2} = L_n + 79,5 \text{ mm}$$

Determination of maximum thickness of insulation:

$$h_D = L_a - h_{nom} - t_{tol}$$

e.g. for termoz CNplus 8 x 250:

$$L_a = 248 \text{ mm}, h_{nom} = 35 \text{ mm}, t_{tol} = 10 \text{ mm}$$

$$h_D = 248 - 35 - 10 \approx 200 \text{ mm}$$

Table A7.1: Dimensions termoz CNplus 8 / 250 – 310

Anchor type	Shaft		Anchor sleeve		Specific compound nail			
	L_{a1} [mm]	$\varnothing d_d$ [mm]	h_{nom} [mm]	L_{a2} [mm]	$\varnothing d_n$ [mm]	L_n [mm]	L_1 [mm]	$\varnothing d_1$ [mm]
termoz CNplus 8 / 250 – 310	81	8	35/55 ¹⁾	167 - 247	4,3	$(L_{a1}+L_{a2}) - 79,5$	77,5	8

¹⁾ Only for use cat. D & E

fischer termoz CN 8 | fischer termoz CN 8 R | fischer termoz CNplus 8

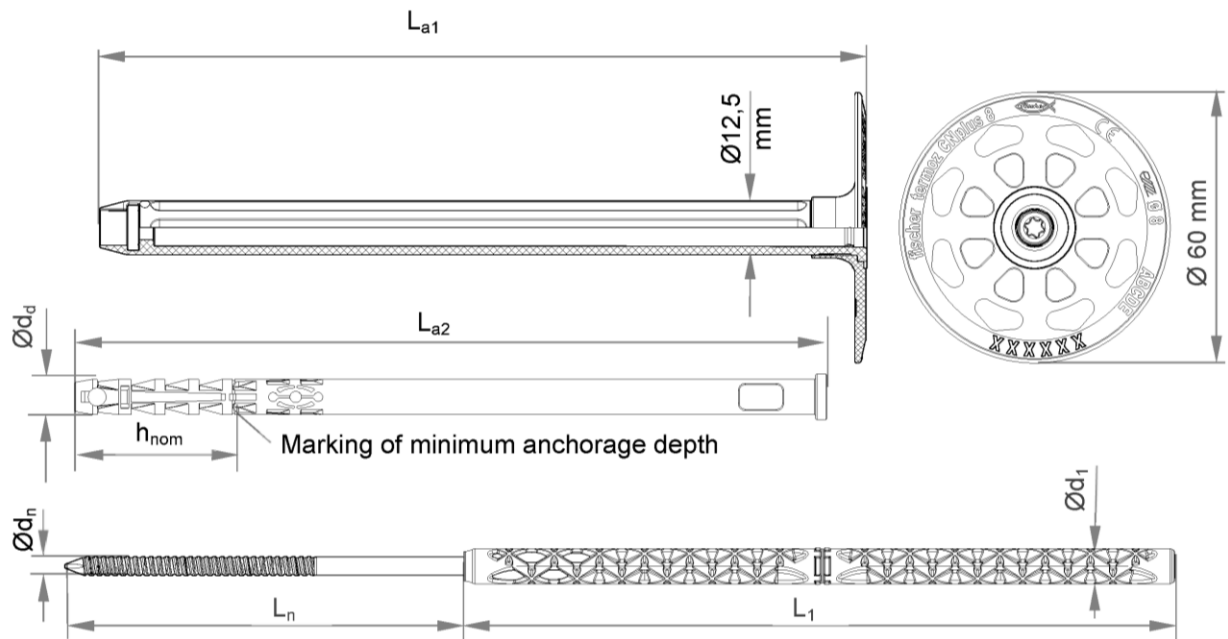
Product description

Dimensions termoz CNplus 8 / 250-310

Annex A7

Appendix 8 / 18

termoz CNplus 8 / 330–390



Various lengths of the anchors are possible:

e.g. for termoz CNplus 8 / 330 – 390:

$$330 \text{ mm} \geq L_{a1} + L_{a2} \leq 390 \text{ mm}$$

$$L_a = L_{a1} + L_{a2} = L_n + 159,5 \text{ mm}$$

Determination of maximum thickness of insulation:

$$h_D = L_a - h_{nom} - t_{tol}$$

e.g. for termoz CNplus 8 x 330:

$$L_a = 328 \text{ mm}, h_{nom} = 35 \text{ mm}, t_{tol} = 10 \text{ mm}$$

$$h_D = 328 - 35 - 10 \approx 280 \text{ mm}$$


Marking: Brand, name and size of anchor, diameter, categories, optional markings see drawing of anchor plate
example e.g.  termoz CNplus 8
ABCDE

Table A8.1: Dimensions termoz CNplus 8 / 330 – 390

Anchor type	Shaft	Anchor sleeve			Specific compound nail			
	L_{a1} [mm]	$\varnothing d_d$ [mm]	h_{nom} [mm]	L_{a2} [mm]	$\varnothing d_n$ [mm]	L_n [mm]	L_1 [mm]	$\varnothing d_1$ [mm]
termoz CNplus 8/ 330 – 390	161	8	35/55 ¹⁾	167 - 247	4,3	$(L_{a1}+L_{a2}) - 159,5$	157,5	8

¹⁾ Only for use cat. D & E

fischer termoz CN 8 | fischer termoz CN 8 R | fischer termoz CNplus 8

Product description

Dimensions termoz CNplus 8 / 330-390

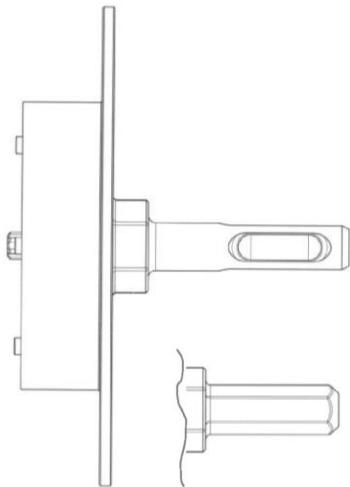
Annex A8

Appendix 9 / 18

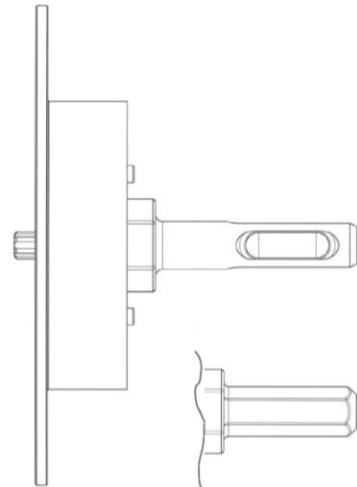
Setting tool with SDS adapter or hexagonal adapter available

fischer termoz CNplus 8

Countersunk setting ¹⁾

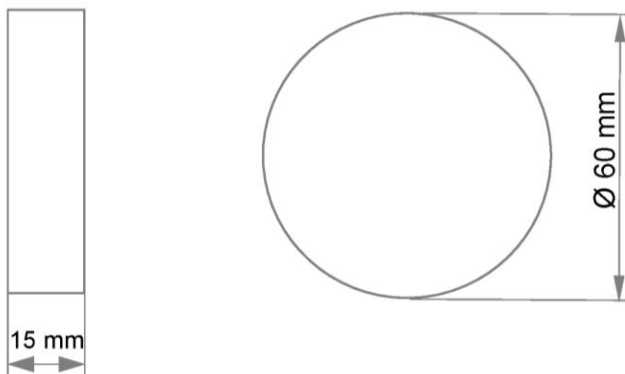


optional plain surface setting



¹⁾ Alternatively, it is possible to mill the insulation material with a standard, market-available milling tool.

Polystyrene or mineral wool cap



fischer termoz CN 8 | fischer termoz CN 8 R | fischer termoz CNplus 8

Product description

Setting tool for fischer termoz CNplus 8

Annex A9

Appendix 10 / 18

Table A10.1: Material

Designation	Material
Anchor sleeve	PP (virgin material), colour: grey
Shaft termoz CN 8 / 250 – 390 or CN 8 R / 250 – 310 or CNplus 8 / 250 - 390	PA6 (virgin material)GF, colour: grey
Plastic cylinder termoz CN 8 / 250 – 390 or CN 8 R / 250 – 310	PA6 (virgin material) GF
Specific nail termoz CN 8 / 250 – 390 or CN 8 R / 250 – 310	Steel gal Zn A2G or A2F according to EN ISO 4042 : 1999
Specific compound nail termoz CN 8 / 110 – 230 or CNplus 8 / 110 – 230 or CNplus 8 / 250 - 390	PA6 GF (plastic part of compound nail) Steel gal Zn A2G or A2F according to EN ISO 4042 : 1999
Anchor plate	PA6 (virgin material) GF colour: grey, orange, red, green, yellow, blue
Slip-on plate	PA6 (virgin material) GF colour: grey, orange, red, green, yellow, blue

Drawing of the slip-on plates

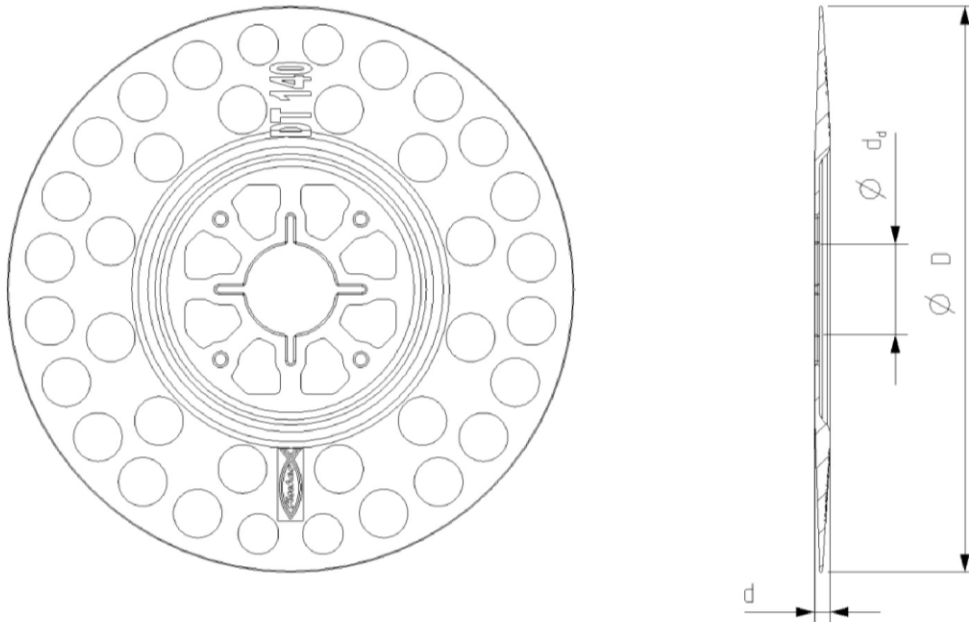


Table A10.2: Slip-on plate, diameters and material

Slip-on plate	Ø D [mm]	Ø d _d [mm]	d [mm]	Material
DT 90 / 110 / 140	90 / 110 / 140	22,5	3,9	PA6 GF

fischer termoz CN 8 | fischer termoz CN 8 R | fischer termoz CNplus 8

Product description

Material
Slip-on plates combined with termoz CN 8 | termoz CN 8 R| termoz CNplus 8

Annex A10

Specifications of intended use

Anchorage subject to:

- The anchor may only be used for transmission of wind suction loads and shall not be used for the transmission of dead loads of the external thermal insulation composite system (ETICS).

Base materials:

- Normal weight concrete (use category A), according to Annex C1 and C2.
- Solid masonry (use category B), according to Annex C1 and C2.
- Hollow or perforated masonry (use category C), according to Annex C1 and C2.
- Lightweight aggregate concrete (use category D), according to Annex C1 and C2.
- Autoclaved aerated concrete (use category E), according to Annex C1 and C2.
- For other base materials of the use categories A, B, C, D and E the characteristic resistance of the anchor may be determined by job site tests acc. to EOTA Technical Report TR 051 Edition December 2016.

Temperature Range:

- 0°C to +40°C (max. short term temperature +40°C and max. long term temperature +24°C).

Design:

- The anchorages are designed under the responsibility of an engineer experienced in anchorages and masonry work with the partial safety factors $\gamma_M = 2,0$ and $\gamma_F = 1,5$ in absence of other national regulations.
- Verifiable calculation notes and drawings are prepared taking account of the loads to be anchored. The position of the anchors is indicated on the design drawings.
- Fasteners are only to be used for multiple fixings of ETICS.

Installation:

- Hole drilling by the drill modes according to Annex C1 and C2.
- Anchor installation carried out by appropriately qualified personnel and under the supervision of the person responsible for technical matters on the site.
- Installation temperature from 0°C to +40°C
- Exposure to UV due to solar radiation of the anchor not protected by rendering ≤ 6 weeks.

fischer termoz CN 8 | fischer termoz CN 8 R | fischer termoz CNplus 8

Intended use
Specification

Annex B1
Appendix 12 / 18

Table B2.1: Installation parameters / flush mounted

Anchor type			termoz CN 8 CN8 R termoz CNplus 8
Drill hole diameter	d_0	= [mm]	8
Cutting diameter of drill bit	d_{cut}	≤ [mm]	8,45
Depth of drilled hole to deepest point	h_1	≥ [mm]	45/55 ¹⁾ /65 ²⁾
Overall plastic anchor embedment depth in the base material	h_{nom}	≥ [mm]	35/45 ¹⁾ /55 ²⁾

¹⁾ Only CNplus 8: for weather shell (thin concrete slabs) : $35 \text{ mm} \leq h_{nom} \leq 45 \text{ mm}$

²⁾ termoz CN 8 | CN8 R : Only for use cat. "E" | termoz CNplus 8: Only for use cat. "D" & "E"

Table B2.2: Installation parameters / countersunk mounted

Anchor type			termoz CNplus 8
Drill hole diameter	d_0	= [mm]	8
Cutting diameter of drill bit	d_{cut}	≤ [mm]	8,45
Depth of drilled hole to deepest point	h_1	≥ [mm]	60/70 ¹⁾ /80 ²⁾
Overall plastic anchor embedment depth in the base material	h_{nom}	≥ [mm]	35/45 ¹⁾ /55 ²⁾

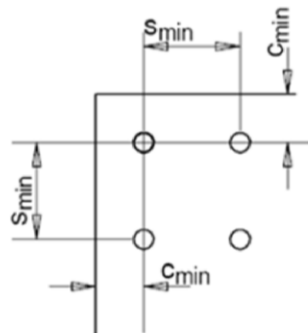
¹⁾ valid for weather shell (thin concrete slabs): $35 \text{ mm} \leq h_{nom} \leq 45 \text{ mm}$

²⁾ Only for use cat. "D" & "E"

Table B2.3: Minimum distances and spacing

			termoz CN 8 CN8 R termoz CNplus 8
Minimum thickness of member	h_{min}	= [mm]	100
Minimum spacing	s_{min}	= [mm]	100
Minimum edge distance	c_{min}	= [mm]	100

Scheme of distance and spacing



fischer termoz CN 8 | fischer termoz CN 8 R | fischer termoz CNplus 8

Intended use

Installation parameters

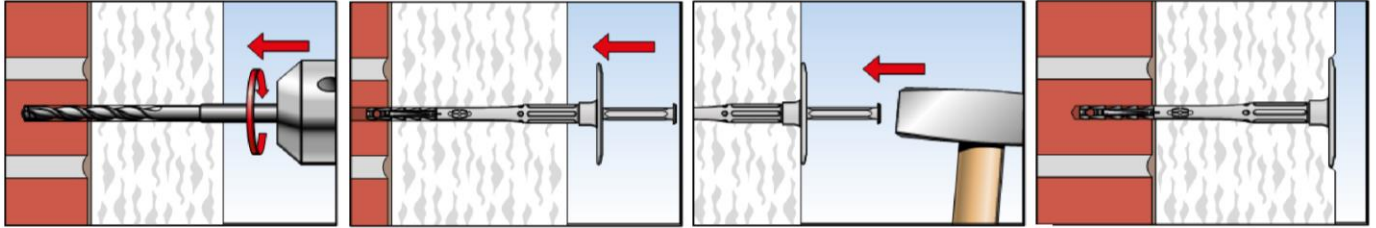
Minimum distances and spacing

Annex B2

Appendix 13 / 18

Installation instructions

Setting of anchor (flush mounted) by hammer / fischer termoz CN 8 | termoz CN 8 R | termoz CNplus 8



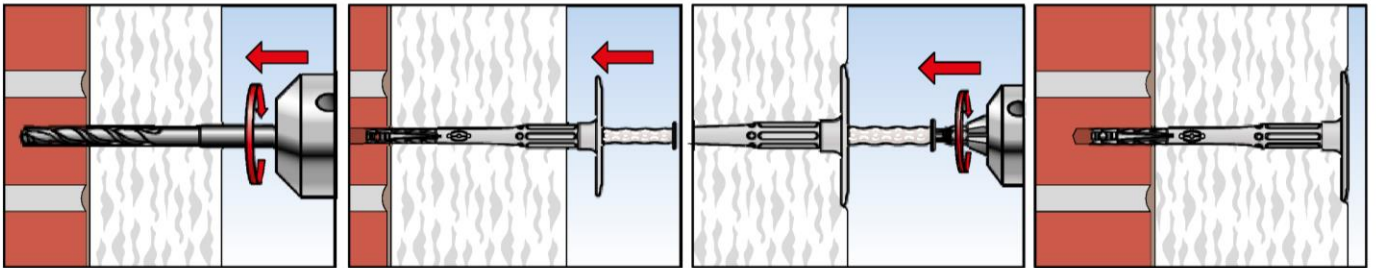
1. Drill hole by corresponding drilling method

2. Insert anchor manually

3. Set anchor by hammerblows

4. Correctly installed anchor

Setting of anchor (flush mounted) by machine / fischer termoz CNplus 8



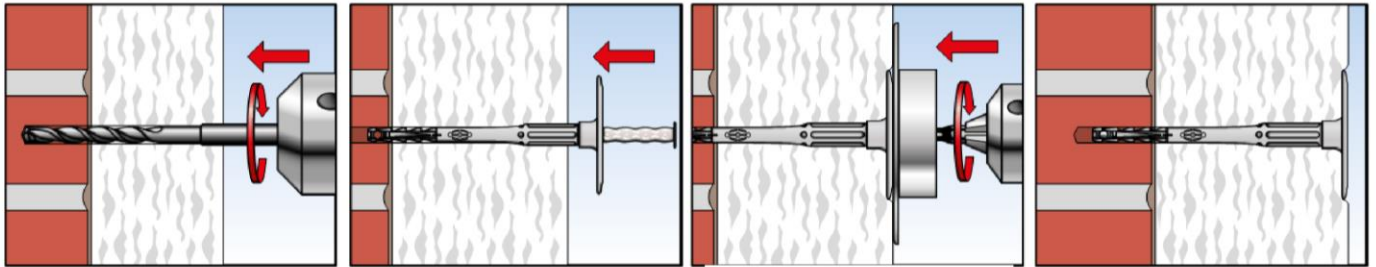
1. Drill hole by corresponding drilling method

2. Insert anchor manually

3. Set anchor by machine.

4. Correctly installed anchor

Setting of anchor (flush mounted) by setting tool \ fischer termoz CNplus 8



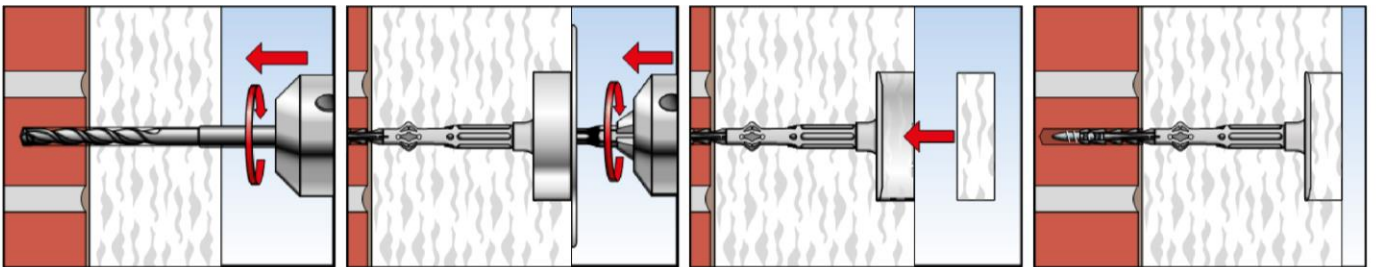
1. Drill hole by corresponding drilling method

2. Insert anchor manually

3. Set anchor by setting tool.

4. Correctly installed anchor

Setting of anchor (countersunk mounted) by setting tool / fischer termoz CNplus 8



1. Drill hole by corresponding drilling method

2. Insert anchor and set anchor by setting tool.

3. Put on polystyrene or mineral wool cap

4. Correctly installed anchor

fischer termoz CN 8 | fischer termoz CN 8 R | fischer termoz CNplus 8

Intended use
Installation instruction

Annex B3

Appendix 14 / 18

Table C1.1: Characteristic resistance N_{Rk} in [kN] to tension loads for single anchor

Base material	Use cat. ¹⁾	Min. compressive strength f_b [N/mm ²]	Bulk density ρ [kg/dm ³]	Remarks	Drill method ²⁾	Characteristic resistance N_{Rk} [kN] termoz CN 8 termoz CN 8 R
Concrete \geq C12/15 - C50/60 EN 206-1:2000	A	-	-	-	H	0,9
Solid clay bricks Mz acc. to EN 771-1:2011	B	12	$\geq 2,0$	Cross section reduced up to 15% by perforation vertically to the resting area	H	0,9
Calcium silicate solid bricks KS e.g. acc. to EN 771-2:2011	B	12	$\geq 1,8$		H	0,9
Solid concrete blocks Vbn acc. to EN 771-3:2011	B	20	$\geq 2,0$		H	0,75
Lightweight concrete blocks Vbl acc. to EN 771-3:2011	B	8	$\geq 1,4$		H	0,6
Vertically perforated clay bricks Hlz acc. to EN 771-1:2011	C	12	$\geq 1,0$	Cross section reduced between 15% and 50% by perforation vertically to the resting area. Exterior web thickness ≥ 15 mm	R	0,6
Hollow calcium silicate brick KSL acc. to EN 771-2:2011	C	20	$\geq 1,4$	Cross section reduced between 15% and 50% by perforation vertically to the resting area. Exterior web thickness ≥ 23 mm	H	0,75
		12				0,5
Lightweight concrete hollow blocks Hbl , acc. to EN 771-3:2011	C	10	$\geq 1,2$	Cross section reduced between 15% and 50% by perforation vertically to the resting area. Exterior web thickness ≥ 38 mm	H	0,6
Lightweight aggregate concrete LAC , acc. to EN 1520:2011, EN 771-3:2011	D	6	$\geq 0,8$	-	H	0,6
		4				0,4
Autoclaved aerated concrete blocks, AAC acc. to EN 771-4:2011	E	6	$> 0,6$	-	R	0,3³⁾
		4	$> 0,4$			0,3³⁾

¹⁾ See Annex B1

²⁾ R = Rotary drilling | H = Hammer drilling

³⁾ Only valid for $h_{nom} \geq 55$ mm

fischer termoz CN 8 | fischer termoz CN 8 R | fischer termoz CNplus 8

Performance

Characteristic resistance termoz CN 8, termoz CN 8 R

Annex C1

Appendix 15 / 18

Table C2.1: Characteristic resistance N_{Rk} in [kN] to tension loads for single anchor

Base material	Use cat. ¹⁾	Min. compressive strength f_b [N/mm ²]	Bulk density ρ [kg/dm ³]	Remarks	Drill method ²⁾	Characteristic resistance N_{Rk} [kN] termoz CNplus 8
Concrete \geq C12/15 - C50/60 EN 206-1:2000	A	-	-	-	H	0,9
Weather resistant concrete shell \geq C20/25 EN 206-1:2000	A	-	-	$h \geq 42$ mm ; $t_{fix} \geq 35$ mm	H	0,9
Solid clay bricks Mz acc. to EN 771-1:2011	B	20	$\geq 1,8$	Cross section reduced up to 15% by perforation vertically to the resting area	H	0,9
Calcium silicate solid bricks KS acc. to EN 771-2:2011	B	20	$\geq 1,8$		H	0,9
Solid concrete blocks Vbn acc. to EN 771-3:2011	B	20	$\geq 2,0$		H	0,9
Lightweight concrete blocks Vbl acc. to EN 771-3:2011	B	10	$\geq 1,6$		H	0,75
Vertically perforated clay bricks Hlz acc. to EN 771-1:2011	C	48	$\geq 1,6$	Cross section reduced between 15% and 50% by perforation vertically to the resting area. Exterior web thickness ≥ 17 mm	R	0,75
		12	$\geq 1,0$	Cross section reduced between 15% and 50% by perforation vertically to the resting area. Exterior web thickness ≥ 15 mm		0,5
Hollow calcium silicate brick KSL acc. to EN 771-2:2011	C	16	$\geq 1,4$	Cross section reduced between 15% and 50% by perforation vertically to the resting area. Exterior web thickness ≥ 16 mm	H	0,5
Lightweight concrete hollow blocks Hbl , acc. to EN 771-3:2011	C	10	$\geq 1,2$	Cross section reduced between 15% and 50% by perforation vertically to the resting area. Exterior web thickness ≥ 38 mm	H	0,6
Lightweight aggregate concrete LAC , acc. to EN 1520:2011, EN 771-3:2011	D	6	$\geq 0,9$	-	H	0,4³⁾
Autoclaved aerated concrete blocks, AAC acc. to EN 771-4:2011	E	4	$> 0,4$	-	R	0,3³⁾

¹⁾ See Annex B1

²⁾ R = Rotary drilling | H = Hammer drilling

³⁾ Only valid for $h_{nom} \geq 55$ mm

fischer termoz CN 8 | fischer termoz CN 8 R | fischer termoz CNplus 8

Performance
Characteristic resistance termoz CNplus 8

Annex C2
Appendix 16 / 18

Table C3.1: Point thermal transmittance acc. to EOTA Technical Report TR 025 : 2016 – 05
fischer termoz CN 8 | fischer termoz CN 8 R

Anchor type	Thickness of insulation material h_D [mm]	Point thermal transmittance χ [W/K]
termoz CN 8 / 110-230	60 - 80	0,001
	> 80 - 180	0,000
termoz CN 8 / 250-350	200 - 300	0,000
termoz CN 8 / 370-390	> 300 - 340	0,001
termoz CN 8 R / 250-310	200 - 260	0,001

Table C3.2: Point thermal transmittance acc. to EOTA Technical Report TR 025 : 2016 – 05
fischer termoz CNplus 8 - flush mounted

Thickness of insulation material h_D [mm]	Point thermal transmittance χ [W/K]				
	cat. A	cat. B	cat. C	cat. D	cat. E
60	0,001	0,001	0,001	0,001	0
80					0,001
100					
120					
140					
160					
180					
200					
220					
240	0,002	0,002	0,001	0,001	
260					
280	0,001	0,001	0,001	0	0
300					
320	0,001	0,001	0,001	-	-
340					

Table C3.3: Point thermal transmittance acc. to EOTA Technical Report TR 025 : 2016 – 05
fischer termoz CNplus 8 - countersunk mounted

Thickness of insulation material h_D [mm]	Point thermal transmittance χ [W/K]				
	cat. A	cat. B	cat. C	cat. D	cat. E
80	0,001	0	0	0	0
100		0,001	0,001	0,001	0,001
120					
140	0,002	0,002	0,001	0,001	0,001
160					
180	0,001	0,001	0,001	0,001	0,001
200					
220	0,001	0,001	0,001	0,001	0,001
240					
260	0	0	0	0	0
280					
300	0,001	0,001	0,001	-	-
320					
340	0,001	0,001	0,001	-	-
340					

fischer termoz CN 8 fischer termoz CN 8 R fischer termoz CNplus 8	Annex C3
Performance Point thermal transmittance	

Appendix 17 / 18

Table C4.1: Plate stiffness acc. to EOTA Technical Report TR 026 : 2016 – 05

Anchor type	Size of the anchor plate [mm]	Load resistance of the anchor plate [kN]	Plate stiffness [kN/mm]
termoz CN 8 termoz CN 8 R	60	1,7	0,6

Table C4.2: Displacements termoz CN 8 | termoz CN 8 R

Base material	termoz CN 8 termoz CN 8 R	
	Tension load F [kN]	Displacements δ [mm]
Concrete \geq C12/15 – C50/60 (EN 206-1:2000)	0,30	< 0,3
Clay brick (EN 771-1:2011), Mz 12	0,30	< 0,5
Calcium silicate solid bricks (EN 771-2:2011), KS 12	0,30	< 0,3
Vertically perforated clay brick (EN 771-1:2011), Hlz 12	0,2	< 0,2
Hollow calcium silicate brick (EN 771-2:2011), KSL 12	0,15	< 0,2
Hollow calcium silicate brick (EN 771-2:2011), KSL 20	0,25	< 0,3
Solid concrete blocks (EN 771-3:2011), Vbn 20	0,25	< 0,3
Hollow brick lightweight concrete (EN 771-3:2011), Hbl 4	0,2	< 0,2
Lightweight concrete solid blocks (EN 771-3:2011), Vbl 8	0,2	< 0,2
Lightweight aggregate concrete (EN 1520:2011, EN 771-3:2011)	LAC 4	< 0,3
	LAC 6	
Autoclaved aerated concrete blocks EN 771-4:2011	AAC 4	< 0,2
	AAC 6	< 0,3

Table C4.3: Displacements termoz CNplus 8

Base material	termoz CNplus 8	
	Tension load F [kN]	Displacements δ [mm]
Concrete \geq C12/15 – C50/60 (EN 206-1:2000)	0,30	< 0,1
Weather resistant concrete shell \geq C20/25 (EN 206-1:2000)	0,30	< 0,1
Clay brick (EN 771-1:2011), Mz 20	0,30	< 0,2
Calcium silicate solid bricks (EN 771-2:2011), KS 20	0,30	< 0,2
Solid concrete blocks (EN 771-3:2011), Vbn 20	0,30	< 0,2
Lightweight concrete solid blocks (EN 771-3:2011), Vbl 10	0,25	< 0,1
Vertically perforated clay brick (EN 771-1:2011), Hlz 48	0,25	< 0,2
Vertically perforated clay brick (EN 771-1:2011), Hlz 12	0,17	< 0,1
Hollow calcium silicate brick (EN 771-2:2011), KSL 16	0,17	< 0,1
Hollow brick lightweight concrete (EN 771-3:2011), Hbl 10	0,20	< 0,1
Lightweight aggregate concrete (EN 1520:2011, EN 771-3:2011)	LAC 6	< 0,2
Autoclaved aerated concrete blocks (EN 771-4:2011)	AAC 4	< 0,1

fischer termoz CN 8 | fischer termoz CN 8 R | fischer termoz CNplus 8
Performance
 Plate stiffness
 Displacements

Annex C4
 Appendix 18 / 18