



DECLARACIÓN DE PRESTACIONES



no 0017 – ES

1. Código de identificación única del producto tipo: **fischer Concrete screw FBS, FBS A4 y FBS C**

2. Usos previstos:

producto	Uso/s previsto/s
anclaje metálico para fijación de grandes cargas en hormigón	para anclar y/o apoyar elementos portantes de hormigón o elementos constructivos pesados, tales como revestimientos y falsos techos, Véase el apéndice, especialmente los anexos B 1 - B 3

3. Fabricante: **fischerwerke GmbH & Co. KG, Klaus-Fischer-Straße 1, 72178 Waldachtal, Germany**

4. Representante autorizado: --

5. Sistemas de evaluación y verificación de la constancia de las prestaciones (EVCP): **1**

6a. Norma armonizada: ---

Organismos notificados: ---

6b. Documento de evaluación europeo: **ETAG 001; 2013-04**

Evaluación técnica europea: **ETA-11/0095; 2016-03-11**

Organismo de evaluación técnica: **DIBt**

Organismos notificados: **1343 – MPA Darmstadt**

7. Prestaciones declaradas:

**Resistencia mecánica y estabilidad (BWR 1)**

indicación esencial	Prestaciones
Resistencia característica para la tensión y las cargas de cizalladura, así como momentos de flexión en el hormigón	Ver anexo, especialmente anexo C 1 y C 2
distancias al borde y entre ejes	Ver anexo, especialmente anexo C 1 y C 2
desplazamientos bajo sollicitaciones a tracción y a cortante	Ver anexo, especialmente anexo C 3

**protección contra incendios (BWR 2)**

indicación esencial	Prestaciones
Reacción al fuego	el anclaje cumple con las exigencias de la clase A1.
resistencia al fuego	Ver anexo, especialmente anexo C 4

8. Documentación técnica adecuada o documentación técnica específica: ---

Las prestaciones del producto identificado anteriormente son conformes con el conjunto de prestaciones declaradas. La presente declaración de prestaciones se emite, de conformidad con el Reglamento (UE) no 305/2011, bajo la sola responsabilidad del fabricante arriba identificado.

Firmado por y en nombre del fabricante por:

Andreas Bucher, Dipl.-Ing.

Wolfgang Hengesbach, Dipl.-Ing., Dipl.-Wirtsch.-Ing.

Tumlingen, 2016-03-23

- Este DoP ha sido redactado en varios idiomas. En caso de disputa acerca de la interpretación siempre prevalecerá la versión en inglés.

- el anexo contiene información voluntaria y complementaria en inglés, que va más allá de las exigencias legales.

**Specific Part**

**1 Technical description of the product**

The fischer concrete screw FBS is an anchor in size of 8, 10, 12 and 14 made of zinc-plated steel respectively steel with zinc flake coating (FBS) or made of stainless steel (FBS A4, FBS C). The anchor is screwed into a predrilled cylindrical drill hole. The special thread of the anchor cuts an internal thread into the member while setting. The anchorage is characterised by mechanical interlock in the special thread.

Product and product description is given in Annex A.

**2 Specification of the intended use in accordance with the applicable European Assessment Document**

The performances given in Section 3 are only valid if the anchor is used in compliance with the specifications and conditions given in Annex B.

The verifications and assessment methods on which this European Technical Assessment is based lead to the assumption of a working life of the anchor of at least 50 years. The indications given on the working life cannot be interpreted as a guarantee given by the producer, but are to be regarded only as a means for choosing the right products in relation to the expected economically reasonable working life of the works.

**3 Performance of the product and references to the methods used for its assessment**

**3.1 Mechanical resistance and stability (BWR 1)**

Essential characteristic	Performance
Characteristic resistance for tension and shear loads as well as bending moments in concrete	See Annex C 1 and C 2
Edge distances and spacing	See Annex C 1 and C 2
Displacements under tension and shear loads	See Annex C 3

**3.2 Safety in case of fire (BWR 2)**

Essential characteristic	Performance
Reaction to fire	Anchorage satisfy requirements for Class A1
Resistance to fire	See Annex C 4

**3.3 Safety in use (BWR 4)**

The essential characteristics regarding Safety in use are included under the Basic Works Requirement Mechanical resistance and stability.

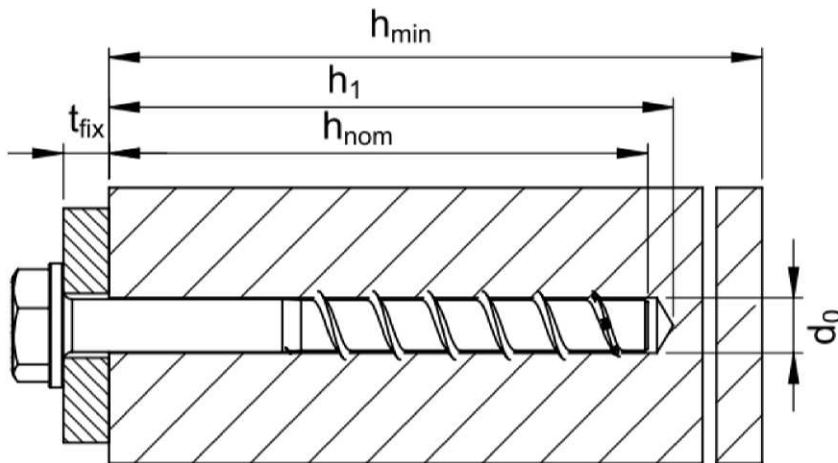
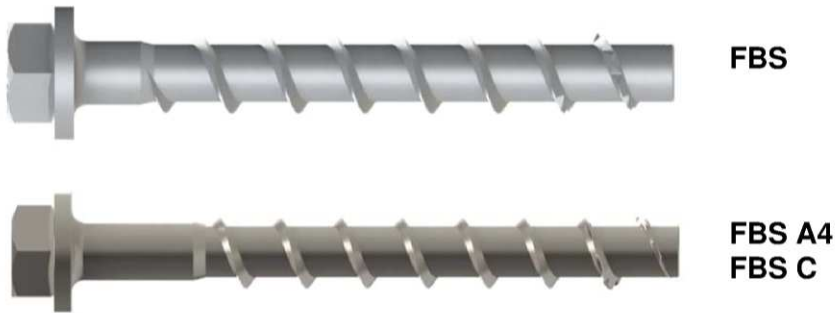
**4 Assessment and verification of constancy of performance (AVCP) system applied, with reference to its legal base**

In accordance with guideline for European technical approval ETAG 001, April 2013 used as European Assessment Document (EAD) according to Article 66 Paragraph 3 of Regulation (EU) No 305/2011 the applicable European legal act is: [96/582/EC].

The system to be applied is: 1

**Product and installed condition**

**fischer concrete screw FBS, FBS A4 and FBS C**



- $d_0$  = Nominal drill bit diameter
- $h_{nom}$  = Nominal anchorage depth
- $h_1$  = Depth of the drill hole
- $h_{min}$  = Minimum thickness of member
- $t_{fix}$  = Thickness of fixture

**fischer concrete screw FBS, FBS A4 and FBS C**

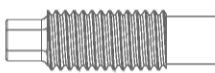
**Product description**

Installed condition

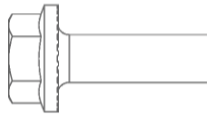
**Annex A 1**

**Table A1: Materials and variants**

Part	Name	Material				
1, 2, 3, 4, 5	Screw anchor	FBS	Steel EN 10263-4 galvanized acc. to EN ISO 4042 or zinc flake coating acc. to EN ISO 10683 ( $\geq 5\mu\text{m}$ )			
		FBS A4	1.4401, 1.4404, 1.4571, 1.4578			
		FBS C	1.4529			
					FBS	FBS A4 / FBS C
		Nominal characteristic steel yield strength	$f_{yk}$	[N/mm <sup>2</sup> ]	600	700
Nominal characteristic steel ultimate strength	$f_{uk}$	[N/mm <sup>2</sup> ]	700	800		



- 1) **FBS ST** - Anchor version with connection thread and hexagon  
e.g. FBS 10x120 M 12x20 ST



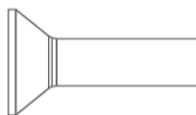
- 2) **FBS-US** - Anchor version with washer, hexagon head and hexalobular internal driving feature (only FBS 8)  
e.g. FBS 8x100 US



- 3) **FBS US** - Anchor version with washer and hexagon head  
e.g. FBS 10x100 US



- 4) **FBS-S** - Anchor version with hexagon head  
e.g. FBS 10x100 S A4



- 5) **FBS-SK** - Anchor version with counter sunk socket head and hexalobular internal driving feature  
e.g. FBS 10x75 SK

fischer concrete screw FBS, FBS A4 and FBS C

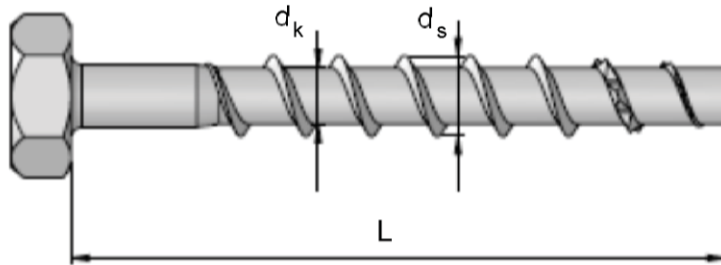
**Product description**

Material and screw types

**Annex A 2**

**Table A2: Dimensions and markings**

Anchor size			FBS 8	FBS 10	FBS 12	FBS 14
Nominal embedment depth			$h_{nom} = 65 \text{ mm}$	$h_{nom} = 85 \text{ mm}$	$h_{nom} = 100 \text{ mm}$	$h_{nom} = 125 \text{ mm}$
Length of the anchor	$L \leq$	[mm]	300			
Diameter of shaft	$d_k$	[mm]	6,8	8,8	10,8	12,8
Diameter of thread	$d_s$	[mm]	10,6	12,6	14,6	16,6



Marking:

Anchor type: FBS / TSM

Anchor size: 10

Length of the anchor in mm: 100

e.g. FBS 10 100

**fischer concrete screw FBS, FBS A4 and FBS C**

**Product descriptions**

Dimensions and markings

**Annex A 3**

**Intended use**

**Anchorage subject to:**

- Static and quasi static loads,
- Used for anchorages with requirements related to resistance of fire.

**Base materials:**

- Reinforced and unreinforced concrete according to EN 206-1:2000-12,
- Strength classes C20/25 to C50/60 according to EN 206-1:2000-12,
- Cracked and uncracked concrete.

**Use conditions (Environmental conditions):**

- The anchor may only be used in dry internal conditions: All screw types
- Structural subject to external atmospheric exposure (including industrial and marine environment) and to permanently damp internal conditions if no particular aggressive conditions exist: screw types made of stainless steel with marking A4
- Structural subject to external atmospheric exposure (including industrial and marine environment) and to permanently damp internal condition if particular aggressive conditions exist: screw types made of stainless steel with marking C

**Design:**

- Anchorages are designed under the responsibility of an engineer experienced in anchorages and concrete work,
- Verifiable calculation notes and drawings are prepared taking account of the loads to be anchored. The position of the anchor is indicated on the design drawings (e.g. position of the anchor relative to reinforcement or to supports, etc.),
- Anchorages under static or quasi-static actions are designed for design Method A designed in accordance with:
  - ETAG 001, Annex C, Edition August 2010 or
  - or CEN/TS 1992-4:2009,
- Anchorages under fire exposure are designed in accordance with:
  - EOTA Technical Report TR 020, Edition May 2004 or
  - CEN/TS 1992-4:2009, Annex D (It must be ensured that local spalling of the concrete cover does not occur).

**Installation:**

- Hammer drilling only,
- Anchor installation carried out by appropriately qualified personal and under the supervision of the person responsible for technical matters of the site,
- After installation further turning of the anchor is not possible. The head of the anchor is supported on the fixture and is not damaged.

**fischer concrete screw FBS, FBS A4 and FBS C**

**Intended use**

Specifications

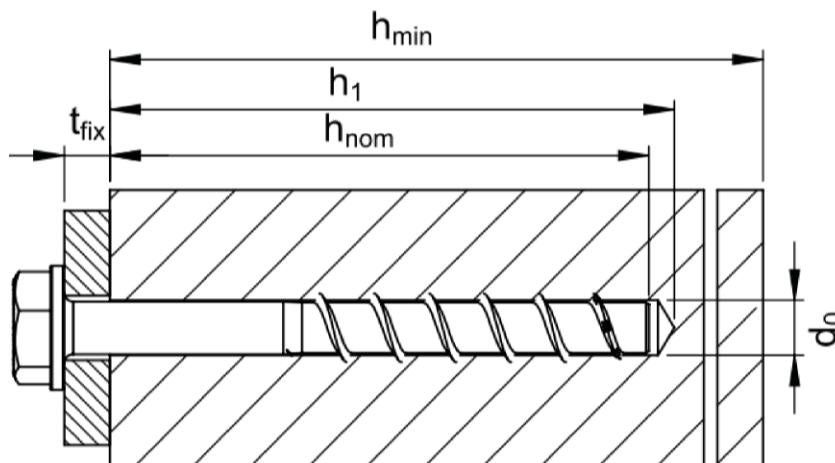
**Annex B 1**

**Table B1: Installation parameters**

Anchor size			FBS 8	FBS 10	FBS 12	FBS 14
Nominal embedment depth			$h_{nom} = 65$ mm	$h_{nom} = 85$ mm	$h_{nom} = 100$ mm	$h_{nom} = 125$ mm
Nominal drill bit diameter	$d_0$	[mm]	8	10	12	14
Cutting diameter of drill bit	$d_{cut} \leq$	[mm]	8,45	10,45	12,50	14,50
Depth of drill hole	$h_1 \geq$	[mm]	75	95	110	135
Nominal embedment depth	$h_{nom} \geq$	[mm]	65	85	100	125
Diameter of clearing hole in the fixture	$d_f \leq$	[mm]	12	14	16	18

**Table B2: Minimum thickness of member, minimum edge distance and minimum spacing**

Anchor size			FBS 8	FBS 10	FBS 12	FBS 14
Nominal embedment depth			$h_{nom} = 65$ mm	$h_{nom} = 85$ mm	$h_{nom} = 100$ mm	$h_{nom} = 125$ mm
Minimum thickness of member	$h_{min}$	[mm]	120	130	150	200
Minimum edge distance	$c_{min}$	[mm]	50	70	80	100
Minimum spacing	$s_{min}$	[mm]	50	70	80	100



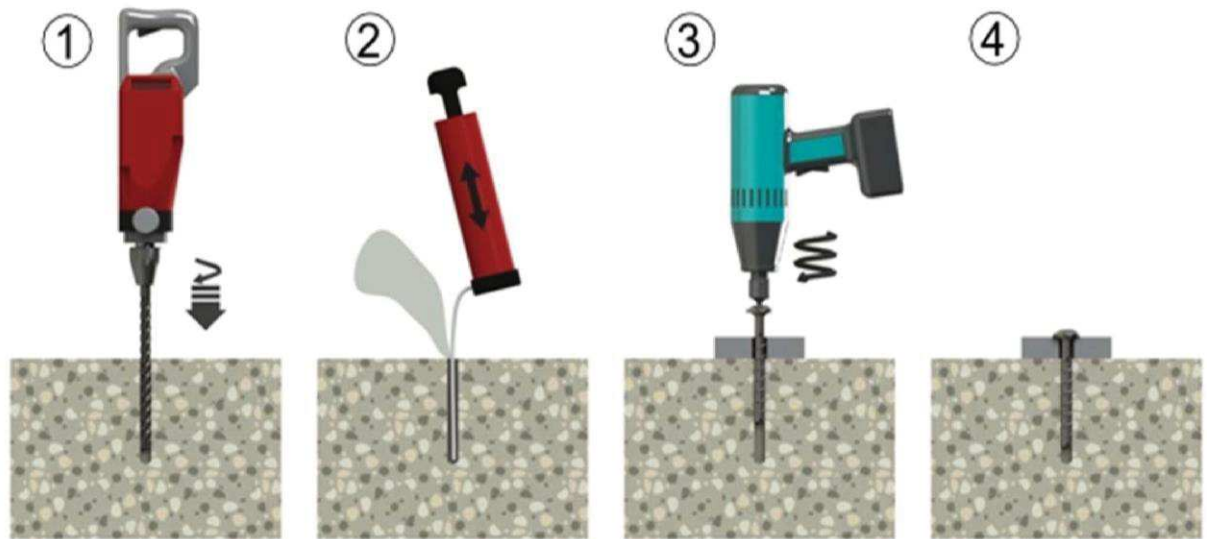
fischer concrete screw FBS, FBS A4 and FBS C

**Intended use**

Installation parameters

**Annex B 2**

**Installation instructions**



fischer concrete screw FBS, FBS A4 and FBS C

**Intended use**

Installation instructions

**Annex B 3**



**Table C1: Characteristic values for design method A according to ETAG 001, Annex C or CEN/TS 1992-4 for FBS**

Anchor size			FBS 8	FBS 10	FBS 12	FBS 14
Nominal embedment depth			$h_{nom} = 65$ mm	$h_{nom} = 85$ mm	$h_{nom} = 100$ mm	$h_{nom} = 125$ mm
<b>Steel failure for tension- and shear load</b>						
Characteristic load	$N_{RK,s}$	[kN]	25,0	42,0	64,0	90,0
	$V_{RK,s}$	[kN]	18,0	34,0	42,0	64,0
	$M^0_{RK,s}$	[Nm]	26,0	56,0	123,0	200,0
<b>Pull-out failure</b>						
Characteristic tension load in cracked concrete C20/25	$N_{RK,p}$	[kN]	9	16	Pull-out Failure is not decisive	Pull-out Failure is not decisive
Characteristic tension load in uncracked concrete C20/25	$N_{RK,p}$	[kN]	12	Pull-out Failure is not decisive	Pull-out Failure is not decisive	Pull-out Failure is not decisive
Increasing factor concrete for $N_{RK,p}$	$\Psi_C$	C30/37	1,22			
		C40/50	1,41			
		C50/60	1,55			
<b>Concrete cone and splitting failure</b>						
Effective anchorage depth	$h_{ef}$	[mm]	51	68	80	100
Factor for	cracked concrete	$k_{cr}^{2)}$	[-]			
	uncracked concrete	$k_{ucr}^{2)}$	[-]			
Concrete cone failure	spacing	$s_{cr,N}$	[mm]			
	edge distance	$c_{cr,N}$	[mm]			
Splitting failure	spacing	$s_{cr,sp}$	[mm]			
	edge distance	$c_{cr,sp}$	[mm]			
Installation safety factor	$\gamma_2^{1)} = \gamma_{inst}^{2)}$	[-]	1,0			
<b>Concrete pry out failure (pry-out)</b>						
k-Factor	$k^{1)} = k_3^{2)}$	[-]	1,0	2,0		
<b>Concrete edge failure</b>						
Effective length of anchor	$l_f = h_{ef}$	[mm]	51	68	80	100
Outside diameter of anchor	$d_{nom}$	[mm]	8	10	12	14

<sup>1)</sup> Parameter relevant only for design according to ETAG 001, Annex C

<sup>2)</sup> Parameter relevant only for design according to CEN/TS 1992-4:2009

fischer concrete screw FBS, FBS A4 and FBS C

**Performances**

Characteristic values for FBS for design method A

**Annex C 1**

**Table C2: Characteristic values for design method A according to ETAG 001, Annex C  
or CEN/TS 1992-4 for FBS A4 and FBS C**

Anchor size			FBS 8 A4 FBS 8 C	FBS 10 A4 FBS 10 C	FBS 12 A4 FBS 12 C	FBS 14 A4 FBS 14 C	
Nominal embedment depth			$h_{nom} = 65$ mm	$h_{nom} = 85$ mm	$h_{nom} = 100$ mm	$h_{nom} = 125$ mm	
<b>Steel failure for tension- and shear load</b>							
Characteristic load	$N_{Rk,s}$	[kN]	29,0	48,0	73,0	103,0	
	$V_{Rk,s}$	[kN]	21,0	40,0	49,0	64,0	
	$M^0_{Rk,s}$	[Nm]	29,0	64,0	141,0	229,0	
<b>Pull-out failure</b>							
Characteristic tension load in cracked concrete C20/25	$N_{Rk,p}$	[kN]	9	16	Pull-out Failure is not decisive	Pull-out Failure is not decisive	
Characteristic tension load in uncracked concrete C20/25	$N_{Rk,p}$	[kN]	12	Pull-out Failure is not decisive	Pull-out Failure is not decisive	Pull-out Failure is not decisive	
Increasing factor concrete for $N_{Rk,p}$	$\Psi_C$	C30/37	1,22				
		C40/50	1,41				
		C50/60	1,55				
<b>Concrete cone and splitting failure</b>							
Effective anchorage depth	$h_{ef}$	[mm]	51	68	80	100	
Factor for	cracked concrete	$k_{cr}^{2)}$	[-]				7,2
	uncracked concrete	$k_{ucr}^{2)}$	[-]				10,1
Concrete cone failure	spacing	$s_{cr,N}$	[mm]				$3 \times h_{ef}$
	edge distance	$c_{cr,N}$	[mm]				$1,5 \times h_{ef}$
Splitting failure	spacing	$s_{cr,sp}$	[mm]				$3 \times h_{ef}$
	edge distance	$c_{cr,sp}$	[mm]				$1,5 \times h_{ef}$
Installation safety factor	$\gamma_2^{1)} = \gamma_{inst}^{2)}$	[-]					1,0
<b>Concrete pry out failure (pry-out)</b>							
k-Factor	$k^{1)} = k_3^{2)}$	[-]	1,0				2,0
<b>Concrete edge failure</b>							
Effective length of anchor	$l_f = h_{ef}$	[mm]	51	68	80	100	
Outside diameter of anchor	$d_{nom}$	[mm]	8	10	12	14	

<sup>1)</sup> Parameter relevant only for design according to ETAG 001, Annex C

<sup>2)</sup> Parameter relevant only for design according to CEN/TS 1992-4:2009

fischer concrete screw FBS, FBS A4 and FBS C

### Performances

Characteristic values for FBS A4 and FBS C for design method A

**Annex C 2**

**Table C3: Displacements under tension load for FBS, FBS A4 and FBS C**

Anchor size			FBS 8	FBS 10	FBS 12	FBS 14
			$h_{nom} = 65$ mm	$h_{nom} = 85$ mm	$h_{nom} = 100$ mm	$h_{nom} = 125$ mm
Tension load	N	[kN]	4,3	7,6	11,1	15,9
Displacement	$\delta_{N0}$	[mm]	0,5			
	$\delta_{\infty}$	[mm]	1,0			

**Table C4 : Displacements under shear load for FBS**

Anchor size			FBS 8	FBS 10	FBS 12	FBS 14
			$h_{nom} = 65$ mm	$h_{nom} = 85$ mm	$h_{nom} = 100$ mm	$h_{nom} = 125$ mm
Shear load	V	[kN]	8,6	16,2	20,0	30,5
Displacement	$\delta_{V0}$	[mm]	2,7	2,7	4,0	3,1
	$\delta_{\infty}$	[mm]	4,1	4,3	6,0	4,7

**Table C5 : Displacements under shear load for FBS A4 and FBS C**

Anchor size			FBS 8 A4 FBS 8 C	FBS 10 A4 FBS 10 C	FBS 12 A4 FBS 12 C	FBS 14 A4 FBS 14 C
			$h_{nom} = 65$ mm	$h_{nom} = 85$ mm	$h_{nom} = 100$ mm	$h_{nom} = 125$ mm
Shear load	V	[kN]	10,0	19,1	23,2	30,5
Displacement	$\delta_{V0}$	[mm]	2,9	3,5	4,1	4,6
	$\delta_{\infty}$	[mm]	4,4	5,3	6,2	7,0

fischer concrete screw FBS, FBS A4 and FBS C

**Performances**

Displacements under tension and shear loads

**Annex C 3**

**Table C6: Characteristic values of resistance to fire exposure for FBS**

Anchor size				FBS 8	FBS 10	FBS 12	FBS 14
Nominal embedment depth				$h_{nom} = 65$ mm	$h_{nom} = 85$ mm	$h_{nom} = 100$ mm	$h_{nom} = 125$ mm
Fire resistance class							
R 30	Characteristic resistance	$F_{Rk,fi30}$	[kN]	2,3	4,0	6,3	9,8
R 60	Characteristic resistance	$F_{Rk,fi60}$	[kN]	1,7	3,3	5,8	8,1
R 90	Characteristic resistance	$F_{Rk,fi90}$	[kN]	1,1	2,2	4,2	5,9
R 120	Characteristic resistance	$F_{Rk,fi120}$	[kN]	0,8	1,7	3,4	4,8
R 30 to R 120	Spacing	$s_{min,fi} = s_{cr,fi}$	[mm]	4 $h_{ef}$			
	Edge distance	$c_{min,fi} = c_{cr,fi}$		2 $h_{ef}$			

**Table C7: Characteristic values of resistance to fire exposure for FBS A4 and FBS C**

Anchor size				FBS 8	FBS 10	FBS 12	FBS 14		
Nominal embedment depth				$h_{nom} = 65$ mm	$h_{nom} = 85$ mm	$h_{nom} = 100$ mm	$h_{nom} = 125$ mm		
Fire resistance class									
R 30	Characteristic resistance	$F_{Rk,fi30}$	[kN]	2,3 <sup>1)</sup>	2,3 <sup>2)</sup>	4,0 <sup>1)</sup>	4,0 <sup>2)</sup>	6,3	9,8
R 60	Characteristic resistance	$F_{Rk,fi60}$	[kN]	1,7 <sup>1)</sup>	2,3 <sup>2)</sup>	3,3 <sup>1)</sup>	4,0 <sup>2)</sup>	5,8	8,1
R 90	Characteristic resistance	$F_{Rk,fi90}$	[kN]	1,1 <sup>1)</sup>	2,3 <sup>2)</sup>	2,2 <sup>1)</sup>	4,0 <sup>2)</sup>	4,2	5,9
R 120	Characteristic resistance	$F_{Rk,fi120}$	[kN]	0,8 <sup>1)</sup>	1,8 <sup>2)</sup>	1,7 <sup>1)</sup>	3,2 <sup>2)</sup>	3,4	4,8
R 30 to R 120	Spacing	$s_{min,fi} = s_{cr,fi}$	[mm]	4 $h_{ef}$					
	Edge distance	$c_{min,fi} = c_{cr,fi}$		2 $h_{ef}$					

<sup>1)</sup> For anchor version with hexagon head and counter sunk socket head

<sup>2)</sup> For anchor version with connection thread

fischer concrete screw FBS, FBS A4 and FBS C

**Performances**

Characteristic values of resistance to fire exposure

**Annex C 4**