

DECLARACIÓN DE PRESTACIONES

DoP-BS-020

para el fischer C-Fiber Force Strengthening System

ES

1. Código de identificación única del producto tipo: DoP-BS-020
2. Usos previstos: Kits para el refuerzo de elementos de hormigón con láminas de CFRP adheridas externamente y colocadas en ranuras Véase el apéndice, especialmente los anexos B1-B6.
3. Fabricante: fischerwerke GmbH & Co. KG, Klaus-Fischer-Str. 1, 72178 Waldachtal, Alemania
4. Representante autorizado: -
5. Sistemas de evaluación y verificación de la constancia de las prestaciones (EVCP) 1+
6. Documento de evaluación europeo: EAD 160086-01-0301
Evaluación técnica europea: ETA-24/0281; 2024-12-06
Organismo de evaluación técnica: DIBt- Deutsches Institut für Bautechnik
Organismos notificados: 2837, TU Darmstadt
7. Prestaciones declaradas:
Resistencia mecánica y estabilidad (BWR 1)
 - 1) Temperatura de transición vítrea del adhesivo estructural: véase el apéndice, especialmente anexo C2
 - 2) Temperatura de transición vítrea del mortero de reparación: véase el apéndice, especialmente anexo C4
 - 3) Resistencia a flexión y compresión del adhesivo estructural: véase el apéndice, especialmente los anexos C5-C6
 - 4) Resistencia a flexión y compresión del mortero de reparación: véase el apéndice, especialmente los anexos C7-C8
 - 5) Resistencia a flexión y compresión del adhesivo estructural curado a la temperatura mínima de aplicación en función del tiempo de curado: véase el apéndice, especialmente los anexos C5-C6
 - 6) Resistencia a flexión y compresión del mortero de reparación curado a la temperatura mínima de aplicación en función del tiempo de curado: véase el apéndice, especialmente los anexos C7-C8
 - 7) Módulo de elasticidad, resistencia a tracción y deformación a rotura de láminas de CFRP: véase el apéndice, especialmente los anexos C10-C11
 - 8) Resistencia de las láminas de CFRP tras el almacenamiento en ambiente alcalino a la temperatura máxima prevista de uso: véase el apéndice, especialmente los anexos C12-C15
 - 9) Resistencia de las láminas de CFRP en ambiente alcalino bajo carga a largo plazo a la temperatura máxima prevista de uso: - NPd
 - 10) Resistencia a tracción por arrancamiento del kit curado en condiciones climáticas estándar: véase el apéndice, especialmente anexo C17
 - 11) Resistencia al arrancamiento del kit tras una sollicitación de fatiga de bajo ciclo: véase el apéndice, especialmente anexo C18
 - 12) Resistencia al arrancamiento del kit tras carga de larga duración bajo condiciones climáticas severas: NPd
 - 13) Resistencia al arrancamiento del kit curado a la temperatura mínima de instalación en función del tiempo de curado: véase el apéndice, especialmente anexo C19**Otras características esenciales adicionales para kits con láminas de CFRP adheridas externamente**
 - 14) Resistencia al cortante de la anclaje por adherencia de las láminas de CFRP adheridas externamente al hormigón: véase el apéndice,
 - 15) Comportamiento a fatiga de la anclaje por adherencia de las láminas de CFRP adheridas externamente al hormigón: NPd**Otras características esenciales adicionales para kits con láminas de CFRP insertadas en ranuras**
 - 16) Cargas de rotura de la anclaje final de láminas de CFRP adheridas en ranuras: véase el apéndice, especialmente anexo C29
 - 17) Carga de larga duración de la anclaje final de láminas de CFRP adheridas en ranuras: NPd**Seguridad en caso de incendio (BWR 2)**
 - 18) Reacción al fuego: NPd
8. Documentación técnica adecuada o documentación técnica específica: -

Las prestaciones del producto identificado anteriormente son conformes con el conjunto de prestaciones declaradas. La presente declaración de prestaciones se emite, de conformidad con el Reglamento (UE) no 305/2011, bajo la sola responsabilidad del fabricante arriba identificado.

Firmado por y en nombre del fabricante por:



Dr. Ronald Mihala, Directeur général Recherche et Développement



Dieter Pfaff, Jefe de la Federación Internacional de Producción y Gestión de Calidad

Esta DdR se ha preparado en distintos idiomas. En caso de que haya alguna controversia sobre la interpretación prevalecerá siempre la versión inglesa.

El Apéndice incluye información voluntaria y complementaria en idioma inglés que excede los requisitos legales (de idioma neutral).

Translation guidance Essential Characteristics and Performance Parameters for Annexes

Rendimiento

Mechanical resistance and stability (BWR 1)		
Resistencia mecánica y estabilidad (BWR 1)		
1	Glass transition temperature of the structural bonding agent: Temperatura de transición vítrea del adhesivo estructural	T_{Gg} [°C], t_{GTn} [S]
2	Glass transition temperature of the repair mortar: Temperatura de transición vítrea del mortero de reparación	T_{Mg} [°C], t_{MTn} [S]
3	Flexural and compressive strength of the structural bonding agent: Resistencia a flexión y compresión del adhesivo estructural	f_{Gfl} , f_{Gflm} , f_{Gflk} [MPa], f_{Gcj} , f_{Gcm} , f_{Gck} [MPa]
4	Flexural and compressive strength of the repair mortar: Resistencia a flexión y compresión del mortero de reparación	f_{Mfl} , f_{Mflm} , f_{Mflk} [MPa], f_{Mci} , f_{Mcm} , f_{Mck} [MPa]
5	Flexural and compressive strength of the structural bonding agent cured at minimum temperature of installation depending on the curing time: Resistencia a flexión y compresión del adhesivo estructural curado a la temperatura mínima de aplicación en función del tiempo de curado	f_{Gflj} , f_{Gflmj} , f_{Gflkj} [MPa], f_{Gcjj} , f_{Gcmj} , f_{Gckj} [MPa]
6	Flexural and compressive strength of repair mortar cured at minimum temperature of installation depending on the curing time: Resistencia a flexión y compresión del mortero de reparación curado a la temperatura mínima de aplicación en función del tiempo de curado	f_{Mflj} , f_{Mflmj} , f_{Mflkj} [MPa], f_{Mcyj} , f_{Mcmj} , f_{Mckj} [MPa]
7	Modulus of elasticity, tensile strength and strain at failure of CFRP strips: Módulo de elasticidad, resistencia a tracción y deformación a rotura de láminas de CFRP	E_{Ll} , E_{Lm} [MPa]; f_{Ll} , f_{Lm} , f_{Lk} [MPa] ϵ_{Ll} , ϵ_{Lm} [mm/mm] // E_{fl} , E_{fm} [MPa], f_{fl} , f_{fm} , f_{fk} [MPa]
8	Resistance of CFRP strips after storage in alkaline environment at maximum temperature for the intended use: Resistencia de las láminas de CFRP tras el almacenamiento en ambiente alcalino a la temperatura máxima prevista de uso	E_{Lai} [MPa]; f_{Lai} [MPa] ϵ_{Luai} [mm/mm], E_{lam} [MPa], f_{lam} [MPa] ϵ_{luam} [mm/mm], R_{LEa} , R_{Lfa} // R_{LEua}
9	Resistance of CFRP strips in alkaline environment under long-term load at maximum temperature for the intended use: Resistencia de las láminas de CFRP en ambiente alcalino bajo carga a largo plazo a la temperatura máxima prevista de uso	E_{Lli} [MPa]; f_{Lli} [MPa] ϵ_{Lliti} [mm/mm], E_{Lliti} [MPa], f_{Lliti} [MPa] ϵ_{Llittm} [mm/mm], R_{LEit} , R_{Lfit} // R_{LEuit}
10	Bond strength of specimens cured at standard environmental conditions: Resistencia a tracción por arrancamiento del kit curado en condiciones climáticas	$f_{Cti,surf}$, $f_{Ctm,surf}$, $f_{Ctk,surf}$ [MPa]
11	Bond strength after low-cycle fatigue action for robustness: Resistencia al arrancamiento del kit tras una sollicitación de fatiga de bajo ciclo	$f_{Cti,surf,fat}$, $f_{Ctm,surf,fat}$, $f_{Ctk,surf,fat}$ [MPa] $R_{fat,m}$
12	Bond strength after long-term loading under harsh climatic conditions: Resistencia al arrancamiento del kit tras carga de larga duración bajo condiciones	$f_{Cti,surf,lt}$ [MPa]
13	Bond strength of specimens cured at minimum temperature of installation depending on the curing time: Resistencia al arrancamiento del kit curado a la temperatura mínima de instalación en función del tiempo de curado	$f_{Cti,surf,Tmin}$, $f_{Ctm,surf,Tmin}$, $f_{Ctk,surf,Tmin}$ [MPa] $R_{Tmin,m}$
Further essential characteristics only for kits with externally bonded (EB) CFRP strips		
Otras características esenciales adicionales para kits con láminas de CFRP adheridas externamente		
14	Shear resistance of the bond anchorage of CFRP strips externally bonded to concrete: Resistencia al cortante de la anclaje por adherencia de las láminas de CFRP adheridas externamente al hormigón	$f_{Ctm,surf}$, $f_{Ctk,surf}$, f_{Ccm} , f_{Cck} [MPa] F_{bLi} , F_{bLm} , F_{bLk} [kN]
15	Fatigue behaviour of the bond anchorage of CFRP strips externally bonded to concrete: Comportamiento a fatiga de la anclaje por adherencia de las láminas de CFRP adheridas externamente al hormigón	$f_{Ctm,surf}$, $f_{Ctk,surf}$, f_{Ccm} , f_{Cck} [MPa] $\Delta F_{bLi} = F_{bLi}^u - F_{bLi}^l$ [kN]
Further essential characteristics only of near surface mounted (NSM) CFRP strips		
Otras características esenciales adicionales para kits con láminas de CFRP insertadas en ranuras		
16	Ultimate anchorage load of near surface mounted CFRP strips Cargas de rotura de la anclaje final de láminas de CFRP adheridas en ranuras	$F_{b(NSM)Li}$, $F_{b(NSM)Lm}$, $F_{b(NSM)Lk}$ [kN]
17	Long-term ultimate anchorage load: Carga de larga duración de la anclaje final de láminas de CFRP adheridas en ranuras	t_j [s], $F_{b(NSM)Lm}$, $F_{b(NSM)Li,t_j}$ [kN]
Safety in case of fire (BWR 2)		
18	Reaction to fire: Reacción al fuego:	Class Clase

Public-law institution jointly founded by the federal states and the Federation

European Technical Assessment Body
for construction products



European Technical Assessment

ETA-24/0281
of 6 December 2024

English translation prepared by DIBt - Original version in German language

General Part

Technical Assessment Body issuing the European Technical Assessment:

Deutsches Institut für Bautechnik

Trade name of the construction product

fischer C-Fiber Force Strengthening System

Product family
to which the construction product belongs

Kits for the strengthening of concrete elements by externally bonded and near surface mounted CFRP strips

Manufacturer

fischerwerke GmbH & Co. KG
Klaus-Fischer-Straße 1
72178 Waldachtal
DEUTSCHLAND

Manufacturing plant

This European Technical Assessment contains

46 pages including 40 annexes which form an integral part of this assessment

This European Technical Assessment is issued in accordance with Regulation (EU) No 305/2011, on the basis of

EAD 160086-01-0301

The European Technical Assessment is issued by the Technical Assessment Body in its official language. Translations of this European Technical Assessment in other languages shall fully correspond to the original issued document and shall be identified as such.

Communication of this European Technical Assessment, including transmission by electronic means, shall be in full. However, partial reproduction may only be made with the written consent of the issuing Technical Assessment Body. Any partial reproduction shall be identified as such.

This European Technical Assessment may be withdrawn by the issuing Technical Assessment Body, in particular pursuant to information by the Commission in accordance with Article 25(3) of Regulation (EU) No 305/2011.

Specific part

1 Technical description of the product

Subject matter of regulation of this European Technical Assessment (ETA) is the "fischer C-Fiber Force Strengthening System" for the strengthening of concrete elements by externally bonded (EB) CFRP strips and by near surface mounted (NSM) CFRP strips (in the following referred to as kit). The kit is used for the strengthening of concrete elements by bonded reinforcements to increase the flexural capacity of the elements either to compensate for design deficiencies, execution flaws and aging induced loss of capacity of the existing structure or increase of capacity in case of increased loads or repurposing of the existing structure.

The kit for the strengthening of concrete elements by externally bonded or near surface mounted carbon fiber reinforced polymer strips consists of the following components:

- A Two types of unidirectional carbon fiber reinforced polymer (CFRP) strips for EB:
 - FRS-L-H and FRS-L-S,
- One type of unidirectional carbon fiber reinforced polymer (CFRP) strips for NSM:
 - FRS-L-S NSM (same type of strips as FRS-L-S for EB)
- B Structural bonding agent acc. to EN 1504-4, EN 1504-3, EN 1504-6 for CFRP strips FRS-CS
- C Repair mortar with polymer binder FRS-PC 11 acc. to EN 1504-3,
- D Bonding agent for the repair mortar FRS-BA acc. to EN 1504-7,
- E Cleaning agent for the CFRP strips FRS-CA.

Furthermore, the manufacturer recommends the coating FRS-SF in case of exposure scenarios with increased UV-exposure as mentioned in the manufacturers product installation manual (MPII) and national regulations which is not part of the kit.

The following information on the kit and its components are given in the annexes to this ETA:

An overview of the kit and its components is given in annex A1 - A3 and its installed condition in annex A4 and A5.

A detailed description of the components of the kit is given in:

- Annex C9 for the CFRP strips (comp. A),
- Annex C1 for the structural bonding agent FRS-CS (comp. B),
- Annex C3 for the repair mortar FRS PC 11 (comp. C),
- Annex C16 for the bonding agent of the repair mortar FRS-BA (comp. D),
- The description of the intended use, design, installation of the kit and curing conditions of the structural bonding agent, repair mortar and bonding agent for the repair mortar is given in annex B1 and B2.
- Instruction of strengthening of concrete structures with externally bonded CFRP strips and near surface mounted CFRP strips is given annex B3 - B6.
- The results of the essential characteristics from assessment procedures according to EAD 160086-01-0301 are given in annex C:
 - o Annex C10 – C15 for the CFRP strips (comp. A),
 - o Annex C2, C5 and C6 for the structural bonding agent FRS-CS (comp. B),
 - o Annex C4, C7 and C8 for the repair mortar FRS PC 11 (comp. C),
- The essential characteristics of the system resulting of from the assessment procedures according to EAD 160086-01-0301 are given in annex C17 – C29.

2 Specification of the intended use in accordance with the applicable European Assessment Document

The kit is used for strengthening the tensile area of concrete elements like beams, slabs, walls and columns. It is intended to contribute to the increase of the structural capacity for static and quasi-static loaded concrete elements according to the design rules. The kit covers two different types of strengthening methods, as depicted in annex A4 and A5, in which CFRP strips are either applied externally onto the prepared concrete surface (EB) or in milled slots perpendicular to the concrete surface (NSM) in accordance with the manufacturer's product installation instructions (MPII).

In case the surface conditions required are not fulfilled due to defects and damages of the concrete element the repair mortar (components C and D), normal concrete or shotcrete (both not part of the kit) may be used to improve the concrete surface condition prior to the application of the CFRP strips to the repaired concrete surface in accordance with the MPII and national regulations.

The performances given in section 3 are only valid if the kit is used in compliance with the specifications and conditions given in annex B and the MPII. Irrespective of annex B and the MPII, national regulations need to be respected.

The verifications and assessment methods on which this ETA is based lead to the assumption of a working life of the kit of at least 25 years when installed, provided that the kit is subject to appropriate installation and use. These provisions are based upon the current state of the art and the available knowledge and experience. The indications given as to the working life of the construction product cannot be interpreted as a guarantee neither given by the product manufacturer nor by the Technical Assessment Body issuing this ETA but are regarded only as a means for expressing the expected economically reasonable working life of the construction product.

3 Performance of the product and references to the methods used for its assessment

3.1 Mechanical resistance and stability (BWR 1)

No.	Essential characteristic	Assessment method according to EAD 160086-01-0301	Performance
1	Glass transition temperature of the structural bonding agent	2.2.1	See Annex C2
2	Glass transition temperature of the repair mortar	2.2.1	See Annex C4
3	Flexural and compressive strength of the structural bonding agent	2.2.2	See Annex C5 and C6
4	Flexural and compressive strength of the repair mortar	2.2.2	See Annex C7 and C8
5	Flexural and compressive strength of the structural bonding agent cured at minimum temperature of installation in depending on the curing time	2.2.3	See Annex C5 and C6
6	Flexural and compressive strength of the repair mortar cured at minimum temperature of installation in depending on the curing time	2.2.3	See Annex C7 and C8
7	Modulus of elasticity, tensile strength and strain at failure of CFRP strips	2.2.4	See Annex C10 and C11
8	Resistance of CFRP strips after storage in alkaline environment at maximum temperature according to the intended use	2.2.5	See Annex C12 to C15
9	Resistance of CFRP strips in alkaline environment under long-term load at maximum temperature according to the intended use	2.2.6	No performance assessed
10	Bond strength of specimens cured at standard environmental conditions	2.2.7	See Annex C17
11	Bond strength after low-cycle fatigue action	2.2.8	see Annex C18
12	Bond strength after long-term loading under harsh climatic conditions	2.2.9	No performance assessed
13	Bond strength of specimens cured at minimum temperature of installation depending on the curing time	2.2.10	See Annex C19
Further essential characteristics only of externally bonded (EB) CFRP strips			
14	Shear resistance of the anchorage of CFRP strips externally bonded to concrete	2.2.11	See Annex C20 to C28
15	Fatigue behaviour of the anchorage of CFRP strips externally bonded to concrete	2.2.12	No performance assessed

No.	Essential characteristic	Assessment method according to EAD 160086-01-0301	Performance
Further essential characteristics only of near surface mounted (NSM) CFRP strips			
16	Ultimate anchorage load of near surface mounted CFRP strips	2.2.13	See Annex C29
17	Long-term ultimate anchorage load	2.2.14	No performance assessed

3.2 Safety in case of fire (BWR 2)

No.	Essential characteristic	Assessment method according to EAD 160086-01-0301	Performance
18	Reaction to fire	2.2.15	No performance assessed

4 Assessment and verification of constancy of performance (AVCP) system applied, with reference to its legal base

In accordance with EAD 160086-01-0301 the applicable European legal act is: 2000/606/EC.

The system to be applied is: 1+

5 Technical details necessary for the implementation of the AVCP system, as provided for in the applicable EAD

Technical details necessary for the implementation of the AVCP system are laid down in the control plan deposited with Deutsches Institut für Bautechnik.

Issued in Berlin on 6. December 2024 by Deutsches Institut für Bautechnik

LBD Dipl.-Ing. Andreas Kummerow
Head of Department

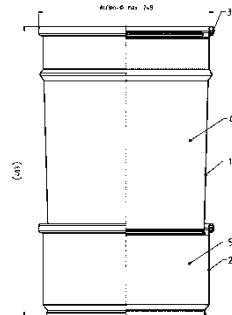
beglaubigt:
Alex

Overview of the fischer C-Fiber Force Strengthening System – System components (Part I)							
Components acc. to EAD	Comp. A			Comp. B	Comp. C	Comp. D	Comp. E
Product name	CFRP CFRP strip FRS- L-H	CFRP CFRP strip FRS- L-S	CFRP CFRP strip FRS- L-S NSM	Epoxy mortar FRS-CS	Epoxy repair mortar FRS-PC 11	Bonding Agent FRS-BA	Cleaning Agent FRS-CA
Function	Unidirectional carbon fiber reinforced polymer (CFRP) strips			Structural bonding agent for CFRP strips	Repair mortar with polymer binder	Bonding agent for the repair mortar	Cleaning agent for the CFRP strips
Material	Precured composite from carbon fibers embedded in an epoxy matrix			Cold curing epoxy with mineral fillers	Cold curing epoxy with mineral fillers	Cold curing epoxy with mineral fillers	Solvent / Mixture of solvents
Type of application*	EB	EB	NSM	EB & NSM	EB & NSM	EB & NSM	EB & NSM
Packaging	100 m coil or 150 m coil**			5 kg can 10 kg can 585 ml injection cartridge	11 kg can	5 kg can	500 ml spray can
Shelf life	Infinite (if stored UV-protected)			36 months	36 months	36 months	36 months
Storage conditions	5 to 50 °C, dry environment and UV-protectet			5 to 40 °C	5 to 40 °C	5 to 40 °C	5 to 40 °C
Application temp.	10 to 40 °C			10 to 40 °C	10 to 40 °C	10 to 40 °C	10 to 40 °C
Temp. range in use	- 25 to 40 °C			- 25 to 40 °C	- 25 to 40 °C	- 25 to 40 °C	Not applicable
<p>*EB: Externally bonded CFRP strips; NSM: Near surface mounted CFRP strips. **Coil lengths for the different cross-section product variants are specified in the corresponding technical datasheets.</p>							
fischer C-Fiber Force Strengthening System						Annex A1	
Product description System components and technical details							

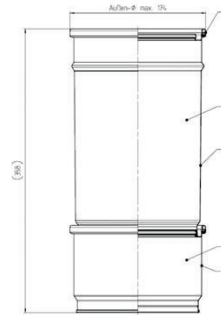
Overview of the fischer C-Fiber Force Strengthening System – System components (Part II)

Epoxy Mortar FRS-CS (Component B, Structural Bonding Agent)

10 kg Can

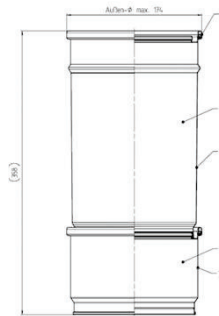


5 kg Can



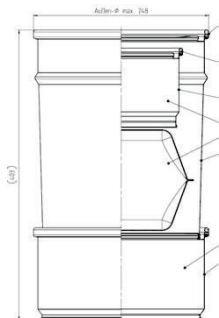
Bonding agent FRS-BA (Component D)

5 kg Can



Repair mortar FRS-PC 11 (Comp. C)

11 kg Can



Cleaning agent FRA-CA (Comp. E)

500 ml aerosol spray can



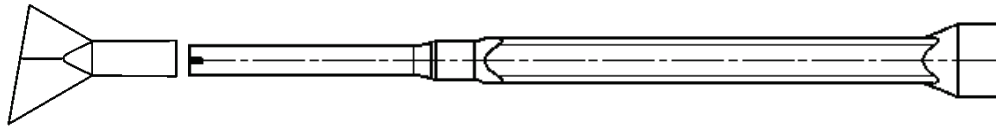
fischer C-Fiber Force Strengthening System

Product description
System components and technical details

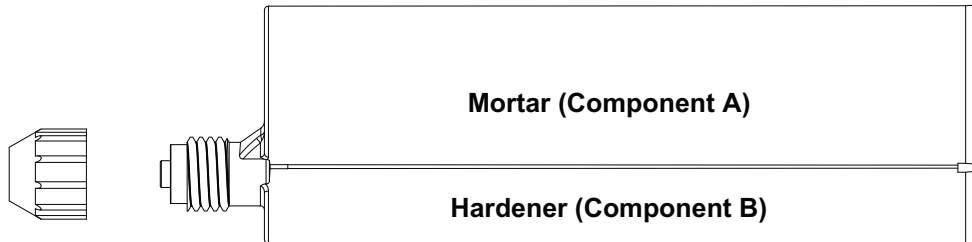
Annex A2

Overview of the fischer C-Fiber Force Strengthening System – System components (Part III)

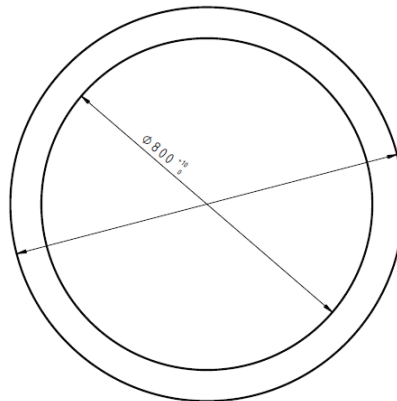
Static mixing nozzle FIS UMR for cartridges with FRS-GA injection adapter



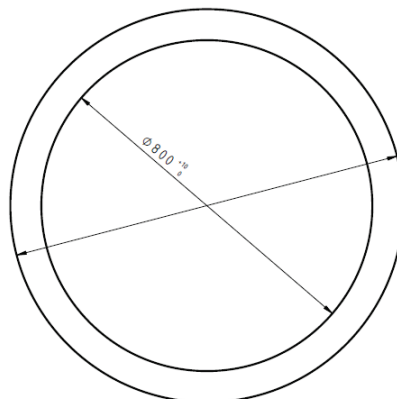
Structural bonding agent FRS-CS 585 ml cartridges



Coils of externally bonded CFRP strips FRS-L-S, FRS-L-H (Component A)



Coils of near surface mounted CFRP strips FRS-L-S-NSM (Component A)



fischer C-Fiber Force Strengthening System

Product description
System components and technical details

Annex A3

Overview of the fischer C-Fiber Force Strengthening System – strengthening techniques (Part I)

Externally bonded CFRP strips

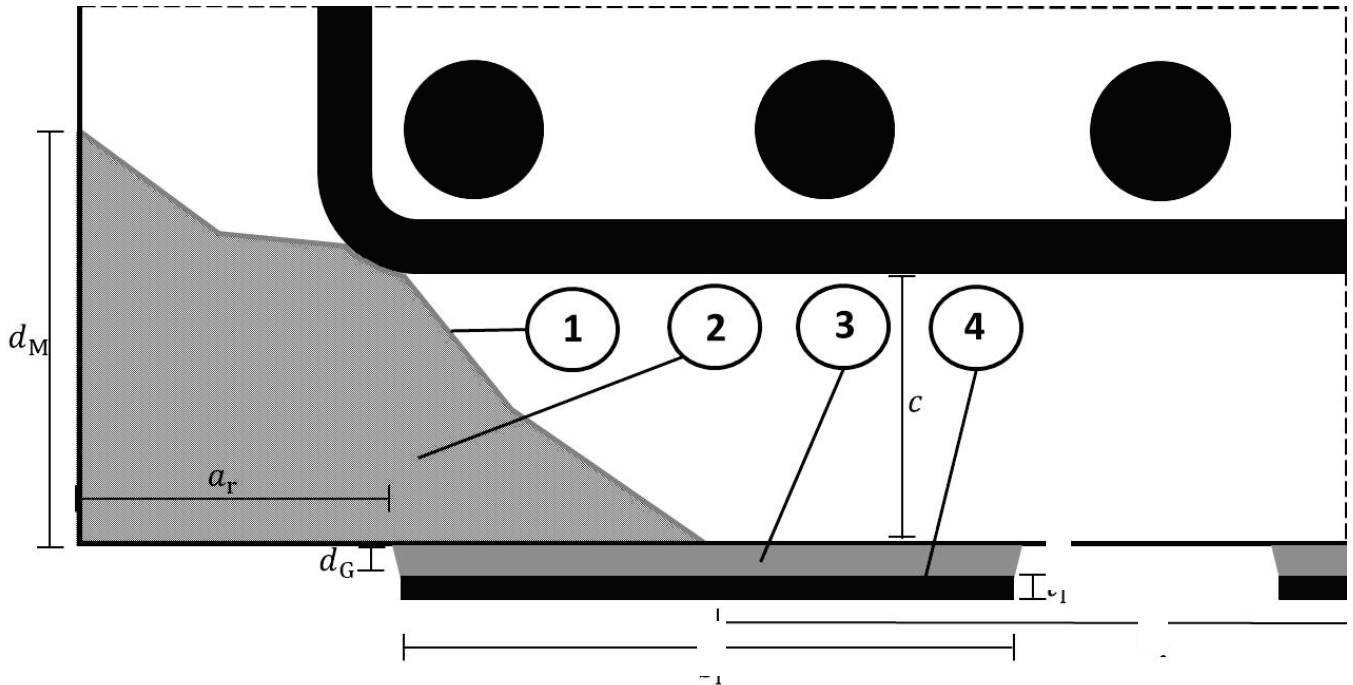


Figure A4.1: Strengthening layout with externally bonded FRS-L-S and FRS-L-H CFRP strips using the Epoxy Mortar FRS-CS with (optional) preceding concrete repair using the Epoxy Repair Mortar FRS-PC 11 with the Bonding Agent FRS-BA.

Legend

- c* Concrete Cover of the internal reinforcement
- a_r* Edge distance of the externally bonded reinforcements
- a_l* Center to center distance of externally bonded CFRP strips
- d_B* Layer thickness or consumption of the Bonding Agent FRS-BA
- d_M* Layer thickness of the Epoxy Repair Mortar FRS-PC 11
- d_G* Layer thickness of the structural bonding agent, the Epoxy Mortar FRS-CS
- t₁* Thickness of the externally bonded CFRP strips
- b₁* Width of the externally bonded CFRP strips

- 1 Component D - Bonding Agent FRS-BA: Consumption *d_D*: 500 g/m² - 800 g/m²**
- 2 Component C - Epoxy Repair Mortar FRS-PC 11: Layer thickness *d_M*: 4 mm - 30 mm**
- 3 Component B - Structural bonding agent FRS-CS: Layer thickness *d_G*: 1 mm - 5 mm**
- 4 Component A - CFRP strip FRS-L-S / FRS-L-H: thickness of CFRP strips *t₁*: 1,2 mm / 1,4 mm (≤ 2 layers)**

fischer C-Fiber Force Strengthening System	Annex A4
Product description Installed condition – externally bonded CFRP strips	

Overview of the Fischer C-Fiber Force Strengthening System – strengthening techniques (Part II)

Near surface mounted CFRP strips

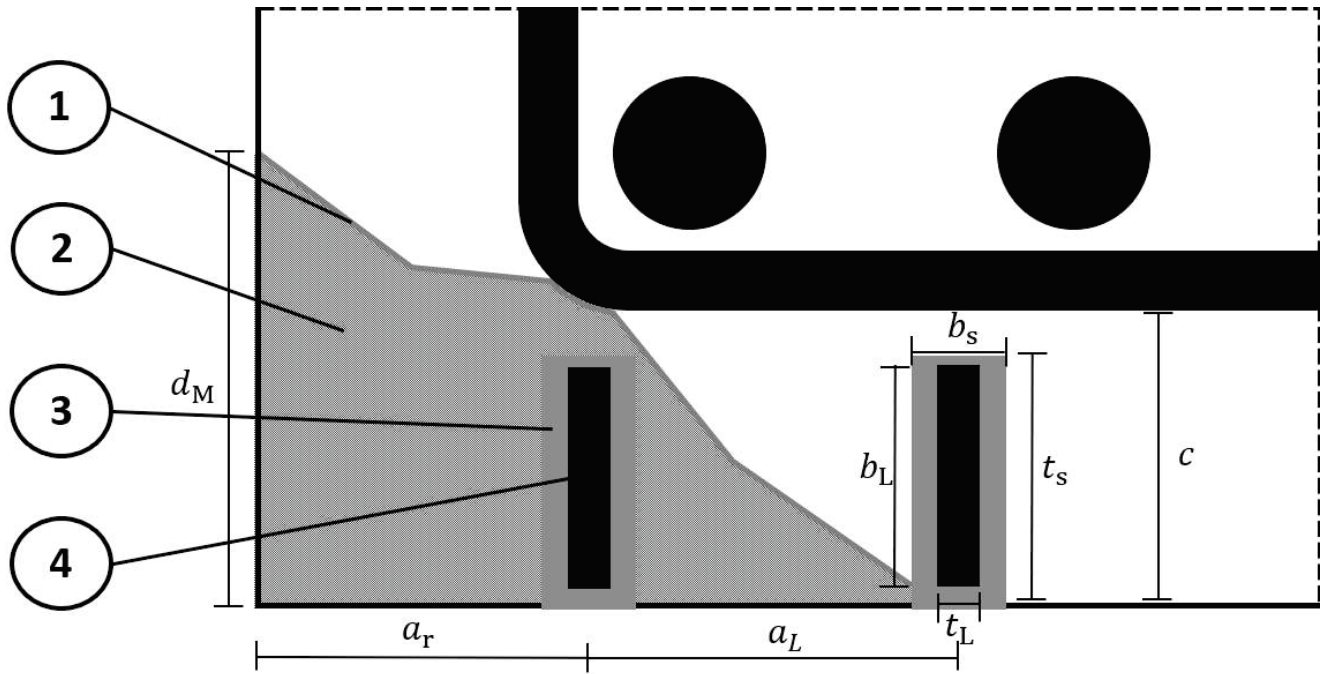


Figure A5.1: Strengthening layout with Near Surface Mounted FRS-L-S NSM CFRP strips using the Epoxy Mortar FRS-CS with preceding concrete repair using the Epoxy Repair Mortar FRS-PC 11 with the Bonding Agent FRS-BA.

Legend

- c* Concrete cover of the internal reinforcements
- a_r* Edge distance of the externally bonded reinforcements
- a_L* Center to center distance of externally bonded CFRP strips
- d_B* Layer thickness or consumption of the Bonding Agent FRS-BA
- d_M* Layer thickness of the Epoxy Repair Mortar FRS-PC 11
- b_s* Width of the concrete slot $t_L + 1\text{mm} \leq b_s \leq t_L + 3\text{mm}$
- t_s* Depth of the concrete slot $t_s \geq b_L + 3\text{mm}$
- t_L* Thickness of the near-surface mounted CFRP strips
- b_L* Width of the near-surface mounted CFRP strips

- 1 Component D - Bonding Agent FRS-BA: Consumption ρ_D : 500 g/m² - 800 g/m²
- 2 Component C - Epoxy Repair Mortar FRS-PC 11: Layer thickness *d_M*: 4 mm - 30 mm
- 3 Component B - Structural bonding agent FRS-CS: Consumption ρ_B : 0,06 kg/m – 0,20 kg/m
- 4 Component A - CFRP strip FRS-L-S NSM: thickness of CFRP strips *t_L*: 1,2 mm / 1,4 mm / 1,7 mm

fischer C-Fiber Force Strengthening System	Annex A5
Product description Installed condition – near surface mounted CFRP strips	

Overview of the fischer C-Fiber Force Strengthening System – Specifications

Intended use

The fischer C-Fiber Force Strengthening System is used for strengthening the tensile reinforcement area of concrete elements like beams, slabs, walls and columns. It is intended to contribute to the increase of the structural capacity for static, quasi-static and high cycle fatigue loading of concrete elements according to the design rules.

Structural design

The structural design of strengthening layouts with the fischer C-Fiber Force strengthening system by externally bonded CFRP strips and by near surface mounted CFRP strips is the responsibility of an experienced structural engineer according to the national or international guidelines and regulations, in conjunction with this technical assessment as well as technical drawings and the MPII.

The fischer REINFORCE-FIX® design software might provide design proposals for certain strengthening layouts for reinforced concrete elements.

Base materials

The intended use of the strengthening system as covered by this ETA covers concrete elements from normal weight reinforced concrete, whose properties enable assignment to concrete strength classes C12/15 to C50/60 according to EN 206-1:2000 or newer, with a mean surface tensile strength of at least $\geq 1,0 \text{ N/mm}^2$ with a sufficiently even and level surface. In case of the use of higher surface tensile strengths in the structural design, these values need to be verified on the concrete element to be strengthened by means of measurement of bond strength by pull-of tests acc. to EN 1542.

The decision on the suitability and adequate pretreatment of the concrete surface remains the responsibility of an experienced structural engineer.

Installation and use conditions

The installations shall be performed by appropriately qualified personnel under the supervision of the responsible structural engineer. Installation works shall be performed in accordance with the layout given in the structural design without allocation or exchange of defined materials and geometries. All materials covered in the C-Fiber Force Strengthening System shall be used without manipulations

The CFRP strips are only available in the widths according to Appendix B2. The width of the CFRP strips shall not be changed on the construction site. The CFRP strips shall be cut to the required length in accordance with the manufacturer's product installation instructions (MPII).

Storage, transport, handling, preparation and mixing as well as installation works need to be performed according to the manufacturer's technical datasheets and manufacturer's product installation instructions (MPII) and in alignment with national and international regulations.

The temperature range of use of the fischer C-Fiber Force Strengthening System is $- 25 \text{ °C} - + 40 \text{ °C}$ after complete cure of the components. Reductions in load-bearing capacity due to the effects of temperature and other environmental conditions shall be taken into account in the structural design.

The fischer C-Fiber Force Strengthening System may be applied within an ambient temperature range of $+ 10 \text{ °C} - + 40 \text{ °C}$ if both surface temperature and ambient temperature are in range above dew point in accordance with the manufacturer's product installation instructions (MPII) respectively manuals.

The curing times of the system components are listed below:

Temperature:	$\geq 10 \text{ °C}$	$\geq 20 \text{ °C}$	40 °C
FRS-BA	$\geq 96 \text{ h}$	$\geq 48 \text{ h}$	$\geq 24 \text{ h}$
FRS-PC 11	$\geq 96 \text{ h}$	$\geq 48 \text{ h}$	$\geq 24 \text{ h}$
FRS-CS	$\geq 48 \text{ h}$	$\geq 24 \text{ h}$	$\geq 16 \text{ h}$

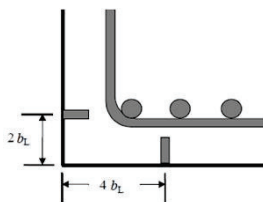
The kit should therefore cure for at least 48 h at standard conditions (21 °C) or at least 96 h at minimum installation temperature (10 °C) depending on the individual weather conditions.

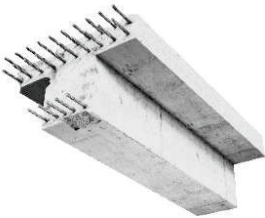
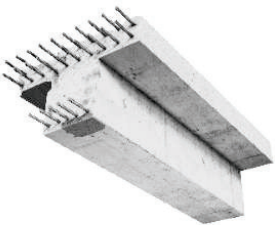
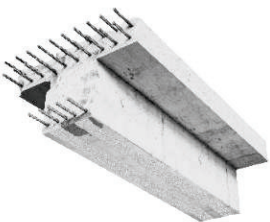
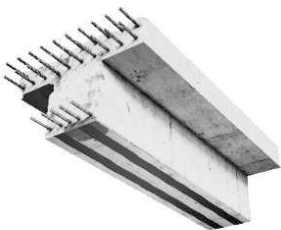
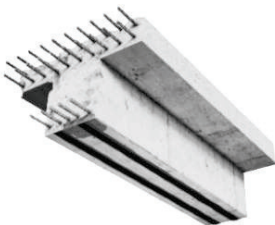
Quality assurance of the application should be defined and performed by the responsible structural engineer to ensure correct design, surface preparation, installation and cure of the kit in alignment with the manufacturers MPII and national regulations if applicable.

fischer C-Fiber Force Strengthening System

Intended use
Specifications and installation conditions

Annex B1

Specifications and installation conditions of the strengthening system					
Concrete repair with FRS-PC 11 (Comp. C) and Bonding Agent FRS-BA (Comp. D)					
Concrete surface treatment	Removal of loose concrete particles and cleaning with a steel brush and vacuum or compressed air.				
System	Repair mortar FRS-PC 11 appl. wet in wet with bonding agent FRS-BA				
Recommended consumption of bonding agent FRS-BA d_B [kg/m ²]	0,5 – 0,8				
Range of layer thickness of repair mortar FRS-PC 11 d_M [mm]	4 - 30				
Layer thickness of repair mortar FRS-PC 11 d_M [mm]	5	10	15	20	30
Corresponding consumption of repair mortar FRS-PC 11 [kg/m ²]	10	20	30	40	60
Consumptions depend on the surface roughness of the concrete surface.					
Strengthening with externally bonded CFRP strips FRS-L-S / FRS-L-H (Comp. A) & FRS-CS (Comp. B)					
Concrete Surface treatment	Sand blasting	Shot peening	Grinding	Needle gun	
	Cleaning with vacuum or compressed air				
Recommended layer thickness d_G [mm]	1 - 5				
Approx. consumption of structural bonding agent FRS-CS [kg/m]	1 mm thickness	2 mm thickness	3 mm thickness	4 mm thickness	5 mm thickness
FRS-L-S / FRS-L-H $b_l = 50$ mm	0,10	0,20	0,30	0,40	0,50
FRS-L-S / FRS-L-H $b_l = 75$ mm	0,15	0,30	0,45	0,60	0,75
FRS-L-S / FRS-L-H $b_l = 100$ mm	0,20	0,40	0,60	0,80	1,00
Minimum edge distance a_r	At least equal to the concrete cover of the internal reinforcements				
Consumptions depend on the surface roughness of the concrete surface.					
Strengthening with near surface mounted CFRP strips FRS-L-S NSM (Comp. A) & FRS-CS (Comp. B)					
Surface treatment	Milling grooves				
	Cleaning of slots with compressed air				
Width and thickness of the CFRP strip [mm x mm]	10 x 1,7		15 x 1,4		20 x 1,2
Recommended min. slot depth t_s [mm]	13		18		23
Recommended slot width b_s [mm]	2,7 - 4,7		2,4 – 4,4		2,2 – 4,2
Approx. consumption of structural bonding agent FRS-CS [kg/m]	0,060 – 0,075		0,075 – 0,090		0,090 – 0,200
Minimum edge distance a_r	$a_r \geq \min \begin{pmatrix} 2 \cdot b_f \\ 30 \text{ mm} \\ d_g \end{pmatrix}$ where b_f : width of CFRP strip; d_g : maximum aggregate size				
					
Minimum slot-slot distance a_l	At least, $a_l \geq b_l$, without load reduction $a_l \geq 2 \cdot b_l$				
Minimum concrete cover c	At least $c \geq t_s + 5$ mm, depending on the working and display accuracy of the devices used				
Consumptions depend on the surface roughness of the concrete surface.					
fischer C-Fiber Force Strengthening System					Annex B2
Intended use Specifications and installation conditions					

Graphic depictions of the strengthening method – Externally bonded CFRP strips (Part I)	
<p>Depiction of the stages of concrete repair and strengthening of concrete structures with the fischer C-Fiber Force Strengthening System with externally bonded CFRP strips</p> <p>The hereby presented installation steps do not substitute the complete installation instruction manuals and might not be complete. For detailed application and processing information consult the corresponding Manufacturer’s Product Installation Instructions (MPII).</p>	
	<p>Application of Bonding Agent FRS-BA as a thin layer on cleaned, fractured, or damaged areas of the concrete as well as on the rust-free, embedded steel reinforcing bars for corrosion protection if exposed.</p> <p><i>(The necessity of concrete repair is dependent on the actual condition of the individual concrete element to be strengthened)</i></p>
	<p>Application of the Epoxy Repair Mortar FRS-PC 11 on the damaged concrete, directly installed into the wet, non-cured bonding agent.</p> <p><i>(The necessity of concrete repair is dependent on the actual condition of the individual concrete element to be strengthened)</i></p>
	<p>Preparation and roughening of the concrete surface to be strengthened for the subsequent bonding of CFRP strips by either sand blasting, shot peening, grinding or similar in the areas, where the CFRP strips are to be applied. After the roughening, the coarse concrete aggregates ≥ 4 mm shall be visible.</p>
	<p>Application of a scratch coat of the structural bonding agent, the Epoxy Mortar FRS-CS on the prepared concrete surface as well as on the surface of the FRS-L-S and FRS-L-H CFRP strips in a roof shaped manner with height from 2 mm to 10 mm.</p>
	<p>Application of the fischer FRS-L-S or FRS-L-H externally bonded CFRP strips to the surface of the concrete element to be strengthened. After the CFRP strips are placed on the concrete surface, the excess FRS-CS Epoxy Mortar shall be visible on the sides of the CFRP strips.</p>
fischer C-Fiber Force Strengthening System	
<p>Overview of the stages of the repair and strengthening of concrete structures with externally bonded CFRP strips</p>	Annex B3

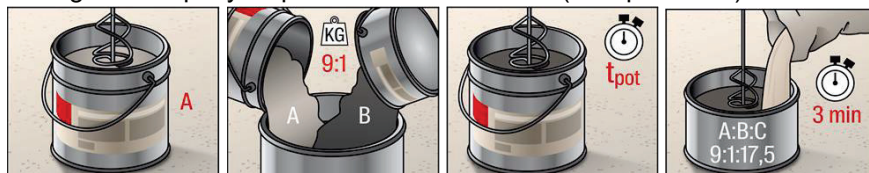
Graphic depictions of the strengthening method - Externally bonded CFRP strips (Part II)

Depiction of the stages of concrete repair and strengthening of concrete structures with the fischer C-Fiber Force Strengthening System with externally bonded CFRP strips

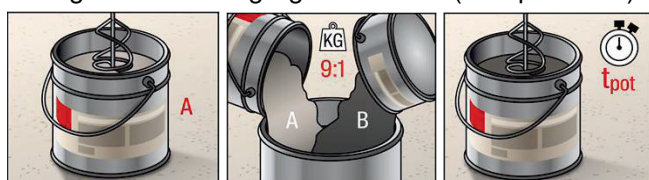
The hereby presented installation steps do not substitute the complete installation instruction manuals and might not be complete. For detailed application and processing information consult the corresponding Manufacturer's Product Installation Instructions (MPII).

Concrete Repair using the Epoxy Repair Mortar FRS-PC 11 with the Bonding Agent FRS-BA:

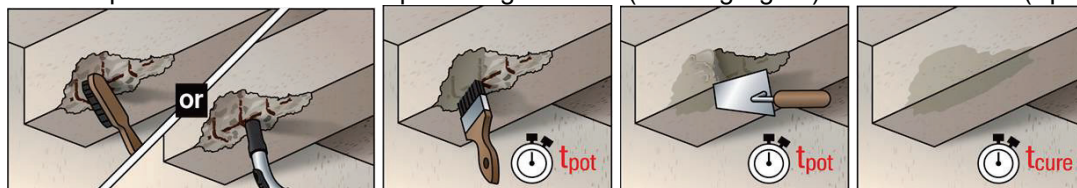
Mixing of the Epoxy Repair Mortar FRS-PC 11 (Component C):



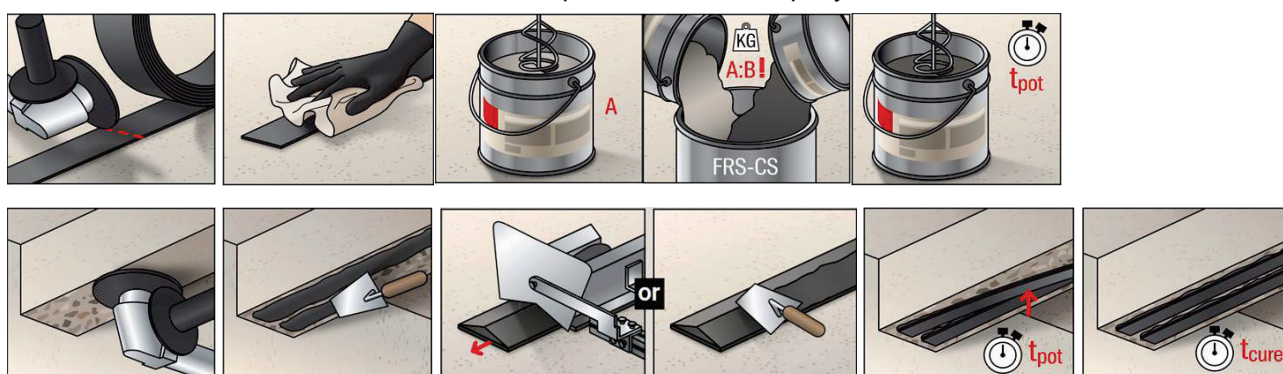
Mixing of the Bonding Agent FRS-BA (Component D):



General procedure of concrete repair using FRS-BA (Bonding Agent) and FRS-PC 11 (Epoxy Repair Mortar):



Installation of FRS-L-S and FRS-L-H CFRP strips and mix of the Epoxy Mortar FRS-CS



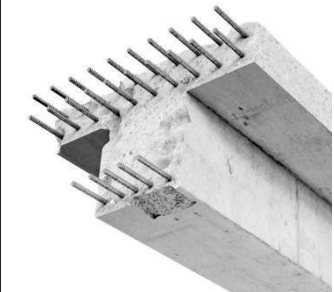
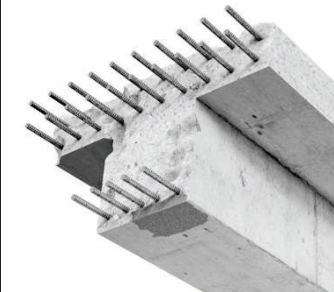
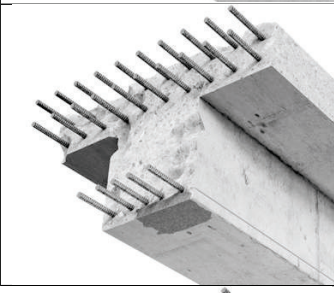
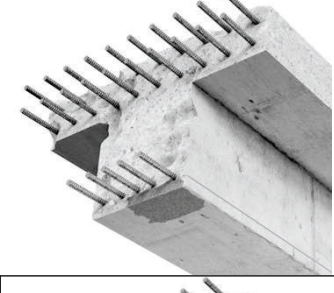
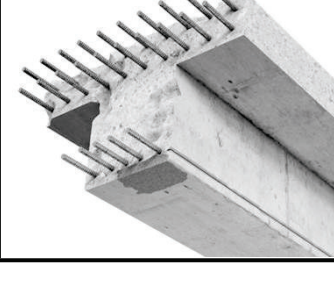
For further information (e.g. on pot life, hardening time etc.) on the FRS-BA, FRS-PC 11, FRS-CS consult the corresponding technical data sheets, product labels, MPII.

fischer C-Fiber Force Strengthening System

Overview

of the stages of the repair and strengthening of concrete structures with externally bonded CFRP Strips

Annex B4

Graphic depictions of the strengthening method – Near surface mounted CFRP strips (Part I)	
<p>Depiction of the stages of concrete repair and strengthening of concrete structures with the fischer C-Fiber Force Strengthening System with near surface mounted CFRP strips</p> <p>The hereby presented installation steps do not substitute the complete installation instruction manuals and might not be complete. For detailed application and processing information consult the corresponding Manufacturer’s Product Installation Instructions (MPII).</p>	
	<p>Application of Bonding Agent FRS-BA as a thin layer on cleaned, fractured, or damaged areas of the concrete as well as on the rust-free, embedded steel reinforcing bars for corrosion protection if exposed.</p> <p><i>(The necessity of concrete repair is dependent on the actual condition of the individual concrete element to be strengthened)</i></p>
	<p>Application of the Epoxy Repair Mortar FRS-PC 11 on the damaged concrete, directly installed into the wet, non-cured bonding agent.</p> <p><i>(The necessity of concrete repair is dependent on the actual condition of the individual concrete element to be strengthened)</i></p>
	<p>Preparation of the concrete surface to be strengthened for bonding by cutting slots with adequate depth and width into the concrete cover and subsequent thorough cleaning of the slot with compressed air.</p>
	<p>The slots are completely filled with adhesive from the bottom of the slots and free of air pockets along their entire length until glue emerges from the slot.</p>
	<p>The CFRP strip is inserted into the middle of the slot until it is completely embedded flush in the slot. The surface is peeled off to remove excess adhesive and to ensure a flat component surface.</p>
fischer C-Fiber Force Strengthening System	
<p>Overview of the stages of the repair and strengthening of concrete structures with near surface mounted CFRP strips</p>	Annex B5

English translation prepared by DIBt

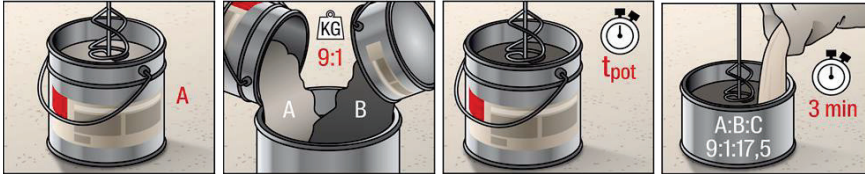
Graphic depictions of the strengthening method – Near surface mounted CFRP strips (Part II)

Depiction of the stages of concrete repair and strengthening of concrete structures with the fischer C-Fiber Force Strengthening System with near surface mounted CFRP strips

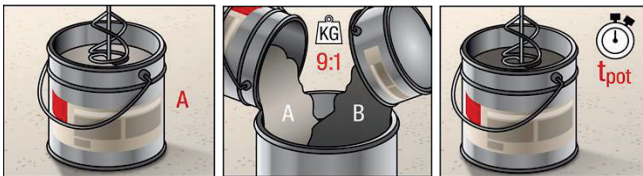
The hereby presented installation steps do not compensate for an installation instruction and are not exhaustive. For detailed application and processing information consult the corresponding Manufacturer Product Installation Instructions (MPII).

Concrete Repair using the Epoxy Repair Mortar FRS-PC 11 with the Bonding Agent FRS-BA

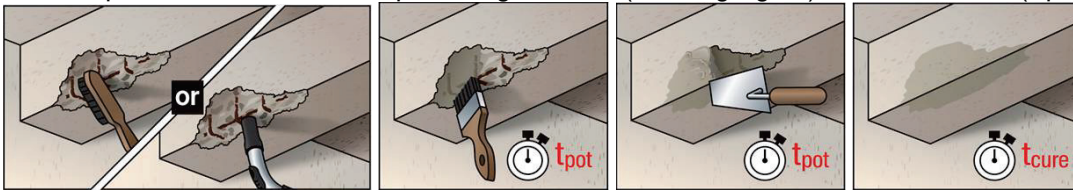
Mixing of the Epoxy Repair Mortar FRS-PC 11 (Component C):



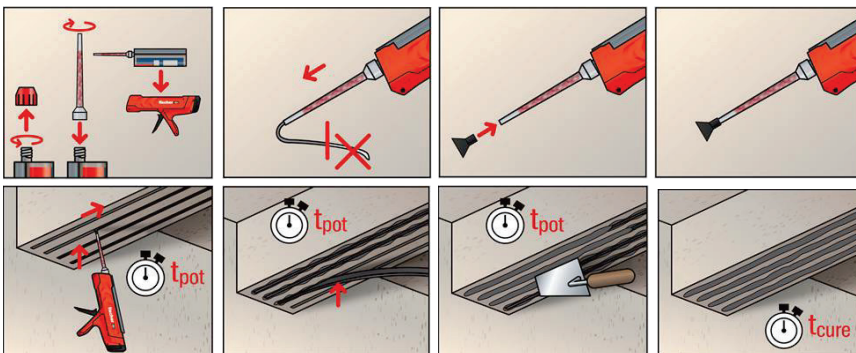
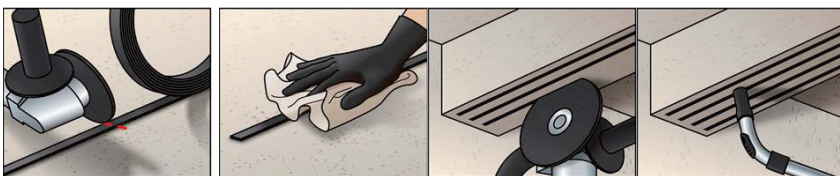
Mixing if the Bonding Agent FRS-BA (Component D):



General procedure of concrete repair using FRS-BA (Bonding Agent) and FRS-PC 11 (Epoxy Repair Mortar):



Installation of FRS-L-S NSM CFRP strips using the Epoxy Mortar FRS-CS /FRS-CS 585 S cartridge system



fischer C-Fiber Force Strengthening System

Overview

of the stages of the repair and strengthening of concrete structures with near surface mounted CFRP strips

Annex B6

Characteristics of the structural bonding agent FRS-CS	
Appearance <ul style="list-style-type: none"> - Component A - Component B - Mixture of A and B (4:1) 	Highly viscous paste of beige colour with visible aggregates Highly viscous paste of black colour with visible aggregates Smooth, highly viscous paste of grey colour with visible aggregates
Density <ul style="list-style-type: none"> - Component A - Component B - Mixture of A and B (4:1) 	1,92 g/cm ³ ± 0,05 g/cm ³ 1,63 g/cm ³ ± 0,05 g/cm ³ 1,86 g/cm ³ ± 0,05 g/cm ³
Mixing ratio by weight	4 : 1
Elastic modulus in compression** and tension:***	≥ 7500 MPa
Tensile strength:***	≥ 35 MPa
Minimum workability time <ul style="list-style-type: none"> - at minimum installation temperature (10°C) and maximum container size (10 kg)* - at standard conditions (21 °C) and maximum container size (10 kg)* - at maximum installation temperature (40 °C) and maximum container size (10 kg)* 	120 min. 80 min. 25 min.
Minimum curing time <ul style="list-style-type: none"> - at minimum installation temperature (10 °C) - at standard conditions (21 °C) - at maximum installation temperature (40 °C) 	4 days 2 days 1 day
*Acc. to EN ISO 9514. **Acc. to EN 13412. ***Acc. to EN ISO 527-1, after 7 days at standard conditions.	
fischer C-Fiber Force Strengthening System	
Product description Technical parameters and details of the structural bonding agent FRS-CS	Annex C1

Glass transition temperature of the structural bonding agent FRS-CS		
Curing conditions and curing times		Glass transition temperature [°C]
- after 7 days curing at 21 °C ± 2 °C, 50% Rh.	T_{Ggi}	54 – 59 *; 55 – 59 *
<p>Determination of the glass transition temperature was performed using the first heating cycle.</p> <p>* Due to the post-curing of the epoxy resin, which is superimposed on the measurement of the glass transition temperature, only one temperature range can be specified for the glass transition temperatures.</p>		
fischer C-Fiber Force Strengthening System		Annex C2
<p>Performance Glass transition temperature of the structural bonding agent FRS-CS cured at standard environmental temperature of installation</p>		

Characteristics of the repair mortar FRS-PC 11	
Appearance <ul style="list-style-type: none"> - Component A - Component B - Component C - Mixture of A, B and C (3,6 : 0,4 : 7) 	Highly viscous paste of white colour Low viscosity, fluent liquid of black colour Free flowing coarse aggregates of beige colour Firm thixotropic mortar of light grey colour
Density <ul style="list-style-type: none"> - Component A - Component B - Component C - Mixture of A and B (3,6 : 0,4 : 7) 	2,12 g/cm ³ ± 0,05 g/cm ³ 0,99 g/cm ³ ± 0,05 g/cm ³ 2,20 g/cm ³ ± 0,05 g/cm ³ 2,12 g/cm ³ ± 0,05 g/cm ³
Mixing ratio by weight	3,6 : 0,4 : 7
Elastic modulus in compression**	≥ 20.000 MPa
Minimum workability time <ul style="list-style-type: none"> - at minimum installation temperature (10 °C) and maximum container size (11 kg)* - at standard conditions (21 °C) and maximum container size (11 kg)* - at maximum installation temperature (40 °C) and maximum container size (11 kg)* 	180 min. 80 min. 25 min.
Minimum curing time <ul style="list-style-type: none"> - at minimum installation temperature (10 °C) - at standard conditions (21 °C) - at maximum installation temperature (40 °C) 	4 days 2 days 1 day
*Acc. to EN ISO 9514. **Acc. to EN 13412.	
fischer C-Fiber Force Strengthening System	
Product description Technical parameters and details of the repair mortar FRS-PC 11	Annex C3

Glass transition temperature of the repair mortar FRS-PC 11		
Curing conditions and curing time		Glass transition temperature [°C]
- after 7 days curing at 21 °C ± 2 °C, 50% Rh.	T_{Ggt}	59 – 63 * 59 – 63 *
<p>Determination of the glass transition temperature was performed using the first heating cycle. * Due to the post-curing of the epoxy resin, which is superimposed on the measurement of the glass transition temperature, only one temperature range can be specified for the glass transition temperatures.</p>		
fischer C-Fiber Force Strengthening System		Annex C4
<p>Performance Glass transition temperature of the repair mortar FRS-PC 11 cured at standard environmental or minimum temperature of installation</p>		

Flexural strength of the structural bonding agent FRS-CS		
Curing conditions and curing times		Flexural strength [MPa]
- after 1 day curing at 10 °C ± 2 °C, 50% Rh.	f_{Gflj}	26,0; 25,7; 25,6;
Mean value	f_{Gflmj}	25,8
Characteristic value	f_{Gflkj}	25,1
- after 7 days curing at 10 °C ± 2 °C, 50% Rh.	f_{Gflj}	34,2; 34,0; 32,4;
Mean value	f_{Gflmj}	33,5
Characteristic value	f_{Gflkj}	30,2
- after 14 days curing at 10 °C ± 2 °C, 50% Rh.	f_{Gflj}	34,6; 31,7; 33,2;
Mean value	f_{Gflmj}	33,2
Characteristic value	f_{Gflkj}	28,3
- after 7 days curing at 21 °C ± 2 °C, 50% Rh.	f_{Gfli}	34,0; 31,3; 29,5;
Mean value	f_{Gtflm}	31,6
Characteristic value	f_{Gflk}	24,0
fischer C-Fiber Force Strengthening System		Annex C5
Performance Flexural strength of the structural bonding agent FRS-CS cured at standard environmental or minimum temperature of installation		

Compressive strength of the structural bonding agent FRS-CS		
Curing conditions and curing time		Compressive strength [MPa]
- after 1 day curing at 10 °C ± 2 °C, 50% Rh.	f_{Gcij}	51,2; 50,1; 51,4; 48,7; 52,9; 47,5;
Mean value	f_{Gcmj}	50,3
Characteristic value	f_{Gckj}	46,0
- after 7 days curing at 10 °C ± 2 °C, 50% Rh.	f_{Gcij}	87,8; 85,9; 87,5; 84,3; 86,6; 82,6;
Mean value	f_{Gcmj}	85,8
Characteristic value	f_{Gckj}	81,4
- after 14 days curing at 10 °C ± 2 °C, 50% Rh.	f_{Gcij}	91,6; 91,3; 91,7; 90,1; 90,2; 89,1;
Mean value	f_{Gcmj}	90,7
Characteristic value	f_{Gckj}	88,4
- after 7 days curing at 21 °C ± 2 °C, 50% Rh.	f_{Gci}	89,9; 87,6; 89,8; 89,4; 88,8; 90,7;
Mean value	f_{Gcm}	89,4
Characteristic value	f_{Gck}	87,0
fischer C-Fiber Force Strengthening System		Annex C6
Performance Compressive strength of the structural bonding agent FRS-CS cured at standard environmental or at minimum temperature of installation		

Flexural strength of the repair mortar FRS-PC 11		
Curing conditions and curing time		Flexural strength [MPa]
- after 1 day curing at 10 °C ± 2 °C, 50% Rh. Mean value Characteristic value	f_{Mflj} f_{Mflmj} f_{Mflkj}	26,3; 25,7; 25,6; 25,9 24,6
- after 7 days curing at 10 °C ± 2 °C, 50% Rh. Mean value Characteristic value	f_{Mflj} f_{Mflmj} f_{Mflkj}	37,5; 36,9; 38,7; 37,7 34,6
- after 14 days curing at 10 °C ± 2 °C, 50% Rh. Mean value Characteristic value	f_{Mflj} f_{Mflmj} f_{Mflkj}	40,5; 43,0; 42,4; 42,0 37,6
- after 7 days curing at 21 °C ± 2 °C, 50% Rh. Mean value Characteristic value	f_{Mfi} f_{Mtflm} f_{Mflk}	42,4; 42,3; 41,6; 42,1 41,4
fischer C-Fiber Force Strengthening System		Annex C7
Performance Flexural strength of the repair mortar FRS-PC 11 cured at standard environmental or at minimum temperature of installation		

Compressive strength of the repair mortar FRS-PC 11		
Curing conditions and curing time		Compressive strength [MPa]
- after 1 day curing at 10 °C ± 2 °C, 50% Rh. Mean value Characteristic value	f_{Mci} f_{Mcm} f_{Mck}	91,4; 88,1; 87,8; 87,1; 86,9; 87,3; 88,1 84,4
- after 7 days curing at 10 °C ± 2 °C, 50% Rh. Mean value Characteristic value	f_{Mci} f_{Mcm} f_{Mck}	137,6; 137,1; 133,5; 135,6; 139,2; 134,3; 136,2 131,5
- after 14 days curing at 10 °C ± 2 °C, 50% Rh. Mean value Characteristic value	f_{Mci} f_{Mcm} f_{Mck}	146,1; 146,6; 144,3; 143,4; 144,6; 143,8; 144,8 142,0
- after 7 days curing at 21 °C ± 2 °C, 50% Rh. Mean value Characteristic value	f_{Mci} f_{Mcm} f_{Mck}	147,0; 150,2; 147,4; 148,4; 146,3; 152,6; 148,7 143,5
fischer C-Fiber Force Strengthening System		Annex C8
Performance Compressive strength of the repair mortar FRS-PC 11 cured at standard environmental or at minimum temperature of installation		

Characteristics of the FRS-L-H CFRP strips			
Type of application	Externally bonded (EB) Reinforcement		
Minimum coil diameter	≥ 800 mm		
Fiber volume content	≥ 67 % by volume*		
Glass transition temperature	≥ 100 °C**		
Geometry	Width b_1 [mm]	Thickness t_1 [mm]	Cross section area [mm ²]
FRS-L-H 50 x 1,2 mm	50	1,2	60
FRS-L-H 50 x 1,4 mm	50	1,4	70
FRS-L-H 75 x 1,2 mm	75	1,2	90
FRS-L-H 75 x 1,4 mm	75	1,4	105
FRS-L-H 100 x 1,2 mm	100	1,2	120
FRS-L-H 100 x 1,4 mm	100	1,4	140
Characteristics of the FRS-L-S CFRP strips			
Type of application	Externally bonded (EB) Reinforcement		
Minimum coil diameter	≥ 800 mm		
Fiber volume content	≥ 67 % by volume*		
Glass transition temperature	≥ 100 °C**		
Geometry	Width b_1 [mm]	Thickness t_1 [mm]	Cross section area [mm ²]
FRS-L-S 50 x 1,2 mm	50	1,2	60
FRS-L-S 50 x 1,4 mm	50	1,4	70
FRS-L-S 75 x 1,2 mm	75	1,2	90
FRS-L-S 75 x 1,4 mm	75	1,4	105
FRS-L-S 100 x 1,2 mm	100	1,2	120
FRS-L-S 100 x 1,4 mm	100	1,4	140
Characteristics of the FRS-L-S NSM CFRP strips			
Type of application	Near surface mounted (NSM) Reinforcement		
Minimum coil diameter	≥ 800 mm		
Fiber volume content	≥ 67 % by volume*		
Glass transition temperature	≥ 100 °C**		
Geometry	Width b_1 [mm]	Thickness t_1 [mm]	Cross section area [mm ²]
FRS-L-S NSM 10 x 1,7 mm	10	1,7	17
FRS-L-S NSM 15 x 1,4 mm	15	1,4	21
FRS-L-S NSM 20 x 1,2 mm	20	1,2	24
Types of CFRP strips FRS-L-H and FRS-L-S / FRS-L-S NSM only differ in the type of fibers used but are identical in their matrix material and fiber volume content as well as production process.			
*Acc. to EN 2564			
**Acc. to EN 12614			
fischer C-Fiber Force Strengthening System			Annex C9
Product Description Types and Geometries of CFRP strips			

Modulus of elasticity, tensile strength and ultimate strain of CFRP strips FRS-L-H		
Essential characteristic		Performance
Modulus of elasticity [GPa]	E_{Li}	206; 206; 191; 199; 205; 194; 202; 195; 191; 191; 206; 201; 200; 199; 199; 209; 206; 208; 203; 205
Mean value [GPa]	E_{Lm}	201
Tensile strength [MPa]	f_{Li}	3499; 3513; 3084; 3226; 3385; 3524; 3230; 3289; 3317; 3196; 3607; 3031; 3679; 3302; 3554; 3609; 3601; 3774; 3369; 3429
Mean value [MPa]	f_{Lm}	3411
Characteristic value of the tensile strength [MPa]	f_{Lk}	3056
Ultimate strain [%]	ϵ_{Lui}	1,80; 1,65; 1,67; 1,63; 1,64; 1,76; 1,60; 1,64; 1,86; 1,63; 1,71; 1,42; 1,76; 1,59; 1,71; 1,68; 1,70; 1,73; 1,59; 1,77
Mean value [%]	ϵ_{Lum}	1,68
<p>Please note that the values of tensile properties in Annex C10 were determined on five separate tensile measurements from all characteristic cross sections of the type FRS-L-H.</p>		
fischer C-Fiber Force Strengthening System		Annex C10
Performance Modulus of elasticity, tensile strength and ultimate strain of FRS-L-H CFRP strips		

Modulus of elasticity, tensile strength and ultimate strain of CFRP strips FRS-L-S und FRS-L-S NSM		
Essential characteristic		Performance
Modulus of elasticity [GPa]	E_{Li}	173; 169; 178; 170; 177; 177; 175; 167; 170; 178; 176; 178; 181; 177; 177; 175; 173; 178; 174; 170; 167; 169; 170; 170; 173; 176; 167; 163; 175; 166; 173; 173; 176; 173; 172; 171; 170; 174; 171; 169; 181; 178; 176; 177; 175; 177; 178; 174; 170; 174; 176; 178; 173; 181; 173; 173; 172; 170; 172; 174; 171; 170; 167; 176; 169; 171; 172; 170; 172; 171
Mean value [GPa]	E_{Lm}	173
Tensile strength [MPa]	f_{Li}	2959; 3057; 2929; 3047; 2989; 3213; 3203; 3193; 3318; 3282; 3060; 3160; 3183; 2911; 3164; 3287; 3094; 2954; 3132; 2966; 2866; 2878; 2913; 2803; 3086; 3040; 2994; 2894; 3136; 2871; 3135; 3278; 3239; 3230; 3155; 3137; 3218; 3171; 3192; 3247; 2241; 2848; 3297; 3111; 2533; 3104; 3238; 3115; 3268; 3230; 2825; 2874; 2839; 2887; 2987; 2935; 3155; 2969; 2994; 3039; 2809; 2807; 2824; 2847; 2779; 3316; 3245; 3220; 3419; 3438;
Mean value [MPa]	f_{Lm}	3054
Characteristic value of the tensile strength [MPa]	f_{Lk}	2701
Ultimate strain [%]	ϵ_{Lui}	1,69; 1,80; 1,66; 1,76; 1,67; 1,76; 1,70; 1,86; 1,89; 1,84; 1,72; 1,77; 1,89; 1,68; 1,73; 1,82; 1,88; 1,69; 1,75; 1,73; 1,64; 1,77; 1,94; 1,67; 1,78; 1,63; 1,70; 1,73; 1,69; 1,70; 1,75; 1,96; 1,90; 1,78; 1,72; 1,76; 1,82; 1,81; 1,69; 1,86; 1,52; 1,53; 1,81; 1,68; 1,69; 1,67; 1,75; 1,76; 1,79; 1,77; 1,65; 1,57; 1,61; 1,63; 1,85; 1,67; 1,78; 1,69; 1,68; 1,78; 1,77; 1,65; 1,68; 1,55; 1,68; 1,82; 1,88; 1,69; 1,75; 1,73; 1,77; 1,65; 1,68; 1,55; 1,68; 1,87; 1,79; 1,84; 1,92; 1,99;
Mean value [%]	ϵ_{Lum}	1,74
fischer C-Fiber Force Strengthening System		Annex C11
Performance Modulus of elasticity, tensile strength and ultimate strain of FRS-L-S & FRS-L-S NSM CFRP strips		

Please note that the values of tensile properties in **Annex C11** were determined on five separate tensile measurements from all characteristic cross sections of the type FRS-L-S and FRS-L-S NSM.

Resistance of CFRP strips FRS-L-H to storage in alkaline environment (pH > 11,0) at maximum temperature for the intended use		
Essential characteristic		Performance
Modulus of elasticity [GPa]	E_{Lai}	192; 196; 198; 196; 200
Mean value [GPa]	E_{Lam}	196
Ratio of modulus of elasticity after / before exposure ($R_{LEa} = E_{Lam} / E_{Lm}$)	R_{LEa}	0,98
Tensile strength [MPa]	f_{Lai}	3135; 3016; 3021; 3243; 3200
Mean value [MPa]	f_{Lam}	3123
Ratio of tensile strength after / before exposure ($R_{Lfa} = f_{Lam} / f_{Lm}$)	R_{Lfa}	0,92
Ultimate strain [%]	ϵ_{Luai}	1,90; 1,48; 1,69; 1,72; 1,72
Mean value [%]	ϵ_{Luam}	1,70
Ratio of ultimate strain after / before exposure ($R_{L\epsilon ua} = \epsilon_{Luam} / \epsilon_{Lum}$)	$R_{L\epsilon ua}$	1,01
<p>Please note that the values of tensile properties in Annex C12 were determined from five measurements of FRS-L-H CFRP strips with 1,2 mm thickness after 1800 h exposure to alkaline solution (pH > 11,0) at maximum temperature of use (40 °C).</p>		
fischer C-Fiber Force Strengthening System		Annex C12
Performance Resistance of FRS-L-H CFRP strips to storage in alkaline environment (pH > 11,0) at maximum temperature according to the intended use (40 °C)		

Resistance of CFRP strips FRS-L-H to storage in alkaline environment (pH > 13,7) at maximum temperature for the intended use		
Essential characteristic		Performance
Modulus of elasticity [GPa]	E_{Lai}	194; 196; 184; 192; 194;
Mean value [GPa]	E_{Lam}	192
Ratio of modulus of elasticity after / before exposure ($R_{LEa} = E_{Lam} / E_{Lm}$)	R_{LEa}	0,96
Tensile strength [MPa]	f_{Lai}	3054; 3407; 3153; 2932; 3356;
Mean value [MPa]	f_{Lam}	3180
Ratio of tensile strength after / before exposure ($R_{Lfa} = f_{Lam} / f_{Lm}$)	R_{Lfa}	0,93
Ultimate strain [%]	ϵ_{Luai}	1,66; 1,68; 1,65; 1,53; 1,68;
Mean value [%]	ϵ_{Luam}	1,64
Ratio of ultimate strain after / before exposure ($R_{L\epsilon ua} = \epsilon_{Luam} / \epsilon_{Lum}$)	$R_{L\epsilon ua}$	0,98
<p>Please note that the following values of tensile properties in Annex C13 were determined from measurements of strips with 1,2 mm thickness after 1800 h exposure to alkaline solution (pH > 13,7) at maximum temperature of use (40 °C).</p>		
fischer C-Fiber Force Strengthening System		Annex C13
Performance Resistance of FRS-L-H CFRP strips to storage in alkaline environment (pH > 13,7) at maximum temperature according to the intended use (40 °C)		

Resistance of CFRP strips FRS-L-S & FRS-L-S NSM to storage in alkaline environment (pH > 11,0) at maximum temperature for the intended use		
Essential characteristic		Performance
Modulus of elasticity [GPa] Mean value [GPa]	E_{Lai} E_{Lam}	171; 168; 173; 172; 170; 171
Ratio of modulus of elasticity after / before exposure ($R_{LEa} = E_{Lam} / E_{Lm}$)	R_{LEa}	0,99
Tensile strength [MPa] Mean value [MPa]	f_{Lai} f_{Lam}	3167; 3175; 3122; 3086; 3039; 3118
Ratio of tensile strength after / before exposure ($R_{Lfa} = f_{Lam} / f_{Lm}$)	R_{Lfa}	1,02
Ultimate strain [%] Mean value [%]	ϵ_{Luai} ϵ_{Luam}	1,81; 1,83; 1,79; 1,73; 1,77; 1,79
Ratio of ultimate strain after / before exposure ($R_{LEua} = \epsilon_{Luam} / \epsilon_{Lum}$)	R_{LEua}	1,02
<p>Please note that the following values of tensile properties in Annex C14 were determined from measurements of strips with 1,2 mm thickness after 1800 h exposure to alkaline solution (pH > 11,0) at maximum temperature of use (40 °C).</p>		
fischer C-Fiber Force Strengthening System		Annex C14
Performance Resistance of FRS-L-S & FRS-L-S NSM CFRP strips to storage in alkaline environment (pH > 11,0) at maximum temperature according to the intended use (40 °C)		

Resistance of CFRP strips FRS-L-S & FRS-L-S NSM to storage in alkaline environment (pH > 13,7) at maximum temperature for the intended use		
Essential characteristic		Performance
Modulus of elasticity [GPa] Mean value [GPa]	E_{Lai} E_{Lam}	170; 171; 166; 169; 172; 170
Ratio of modulus of elasticity after / before exposure ($R_{LEa} = E_{Lam} / E_{Lm}$)	R_{LEa}	0,98
Tensile strength [MPa] Mean value [MPa]	f_{Lai} f_{Lam}	2632; 2868; 2647; 2819; 2835; 2760
Ratio of tensile strength after / before exposure ($R_{Lfa} = f_{Lam} / f_{Lm}$)	R_{Lfa}	0,90
Ultimate strain [%] Mean value [%]	ϵ_{Luai} ϵ_{Luam}	1,64; 1,76; 1,67; 1,73; 1,64; 1,69
Ratio of ultimate strain after / before exposure ($R_{L\epsilon ua} = \epsilon_{Luam} / \epsilon_{Lum}$)	$R_{L\epsilon ua}$	0,97
Please note that the following values of tensile properties in Annex C15 were determined from measurements of strips with 1,2 mm thickness after 1800 h exposure to alkaline solution (pH > 13,7) at maximum temperature of use (40 °C).		
fischer C-Fiber Force Strengthening System		Annex C15
Performance Resistance of FRS-L-S & FRS-L-S NSM CFRP strips to storage in alkaline environment (pH > 13,7) at maximum temperature according to the intended use (40 °C)		

Characteristics of the Bonding Agent FRS-BA	
Appearance <ul style="list-style-type: none"> - Component A - Component B - Mixture of A and B (9:1) 	Highly viscous paste of white colour Low viscosity, fluent liquid of black colour Medium viscosity liquid of light grey colour
Density <ul style="list-style-type: none"> - Component A - Component B - Mixture of A and B (9:1) 	2,12 g/cm ³ ± 0,05 g/cm ³ 0,99 g/cm ³ ± 0,05 g/cm ³ 2,01 g/cm ³ ± 0,05 g/cm ³
Mixing ratio by weight	9 : 1
Elastic modulus in tension*	≥ 7000 MPa
Mean value of the tensile strength**	≥ 35 MPa
Glass transition temperature***	≥ 50 °C
Minimum workability time <ul style="list-style-type: none"> - at minimum installation temperature (10 °C) and maximum container size (5 kg) - at standard conditions (21 °C) and maximum container size (5 kg) - at maximum installation temperature (40 °C) and maximum container size (5 kg) 	180 min. 50 min. 20 min.
Minimum curing time <ul style="list-style-type: none"> - at minimum installation temperature (10 °C) - at standard conditions (21 °C) - at maximum installation temperature (40 °C) 	4 days 2 days 1 day
*Acc. to EN ISO 9514. **Acc. to EN ISO 527-1:2019, after 7 days of curing at standard conditions (21 °C, 50 % Rh). ***Acc. to EN 12614 after 7 days of curing at standard conditions (21 °C, 50 % Rh).	
fischer C-Fiber Force Strengthening System	
Product Description Technical parameters and details of the bonding agent FRS-BA	Annex C16

Bond strength of specimens cured at standard environmental conditions				
Kit composition and layer structure			Bond strength [MPa]	Failure mode
Bonding agent FRS-BA, repair mortar FRS-PC 11, structural bonding agent FRS-CS, CFRP strip FRS-L-H	Single values	$f_{cti,surf}$	2,59	100% Cohesion*
			3,00	100% Cohesion*
			2,39	100% Cohesion*
			2,79	100% Cohesion*
			3,10	100% Cohesion*
	Mean value	$f_{ctm,surf}$	2,77	-
	Characteristic value	$f_{ctk,surf}$	2,09	-
Structural bonding agent FRS-CS, CFRP strip FRS-L-H	Single values	$f_{cti,surf}$	2,00	100% Cohesion*
			2,97	100% Cohesion*
			3,30	100% Cohesion*
			3,66	100% Cohesion*
			3,29	100% Cohesion*
		Mean value	$f_{ctm,surf}$	3,04
	Characteristic value	$f_{ctk,surf}$	1,56	-
Bonding agent FRS-BA, repair mortar FRS-PC 11, structural bonding agent FRS-CS, CFRP strip FRS-L-S	Single values	$f_{cti,surf}$	3,07	100% Cohesion*
			3,37	100% Cohesion*
			2,51	100% Cohesion*
			3,48	100% Cohesion*
			3,15	100% Cohesion*
		Mean value	$f_{ctm,surf}$	3,12
	Characteristic value	$f_{ctk,surf}$	2,24	-
Structural bonding agent FRS-CS, CFRP strip FRS-L-S	Single values	$f_{cti,surf}$	3,24	100% Cohesion*
			3,54	100% Cohesion*
			3,19	100% Cohesion*
			3,50	100% Cohesion*
			3,20	100% Cohesion*
		Mean value	$f_{ctm,surf}$	3,33
	Characteristic value	$f_{ctk,surf}$	2,92	-
<p>Layer thicknesses: Bonding agent for the repair mortar FRS-BA: 500-800 g/m² Concrete repair mortar FRS-PC 11 $d_{M,max.}$: 30 mm Structural bonding agent FRS-CS $d_{G,min.}$: 1 mm CFRP strip FRS-L-S or FRS-L-H t_L: 1,4 mm</p> <p>Curing time: 7 days f_{cm}: 50,5 MPa ; f_{ck}: 49,0 MPa Curing temperature: 21 °C ± 2 °C</p> <p>*100 % Cohesive failure in the concrete substrate. Reference concrete strength class C50/60</p>				
fischer C-Fiber Force Strengthening System				Annex C17
<p>Kit Performance Bond strength of the C-Fiber Force Strengthening System to concrete cured at standard environmental conditions</p>				

Bond strength after low cycle fatigue action				
Kit composition and layer structure			Bond strength [MPa]	Failure mode
Bonding agent FRS-BA, repair mortar FRS-PC 11, structural bonding agent FRS-CS, CFRP strip FRS- L-H	Single values	$f_{cti,surf,fat}$	4,73	100% Cohesion*
			3,60	100% Cohesion*
			3,98	100% Cohesion*
			4,39	100% Cohesion*
			5,53	100% Cohesion*
	Mean value	$f_{ctm,surf,fat}$	4,45**	-
	Characteristic value	$f_{ctk,surf,fat}$	2,72	-
($R_{fat,m} = f_{ctm,surf,fat} / f_{ctm,surf}$)	Ratio	$R_{fat,m}$	1,45	-
Structural bonding agent FRS-CS, CFRP strip FRS- L-H	Single values	$f_{cti,surf,fat}$	5,14	100% Cohesion*
			4,33	100% Cohesion*
			5,31	100% Cohesion*
			4,31	100% Cohesion*
			4,10	100% Cohesion*
	Mean value	$f_{ctm,surf,fat}$	4,64**	-
	Characteristic value	$f_{ctk,surf,fat}$	3,37	-
($R_{fat,m} = f_{ctm,surf,fat} / f_{ctm,surf}$)	Ratio	$R_{fat,m}$	1,51	-
<p>Layer thicknesses: Bonding agent for the repair mortar FRS-BA: 500-800 g/m² Concrete repair mortar FRS-PC 11 $d_{M,max.}$: 30 mm Structural bonding agent FRS-CS $d_{G,min.}$: 1 mm Curing time: 7 days f_{cm}: 50,5 MPa ; f_{ck}: 49,0 MPa Curing temperature: 21 °C ± 2 °C Exposure: 100,000 load cycles with an upper load of 3,32 kN (corresponds to 55 % of reference bond strength 3,07 N/mm²) and a lower load of 0,60 kN (corresponds to 10 % of reference bond strength 3,07 N/mm²) *100 % Cohesive failure in the concrete substrate. Reference concrete according to EN 1542, class C50/60. **Reference bond strength of the unexposed reference member: $f_{ctm,surf} = 3,07$ MPa</p>				
fischer C-Fiber Force Strengthening System				Annex C18
Kit Performance Bond strength of the C-Fiber Force Strengthening System to concrete after low cycle fatigue action				

Bond strength of specimens cured at minimum temperature of installation				
Kit composition and layer structure			Bond strength [MPa]	Failure mode
Bonding agent FRS-BA, repair mortar FRS-PC 11, structural bonding agent FRS-CS, CFRP strip FRS-L-H	Single values	$f_{cti,surf,T_{min}}$	3,12	100% Cohesion*
			2,30	100% Cohesion*
			3,41	100% Cohesion*
			2,75	100% Cohesion*
			3,74	100% Cohesion*
Mean value	$f_{ctm,surf,T_{min}}$	3,06	-	
Characteristic value	$f_{ctk,surf,T_{min}}$	1,75	-	
$(R_{T_{min,m}} = f_{ctm,surf,T_{min}} / f_{ctm,surf})$	Ratio	$R_{T_{min,m}}$	1,01	-
Structural bonding agent FRS-CS, CFRP strip FRS-L-H	Single values	$f_{cti,surf,T_{min}}$	3,55	100% Cohesion*
			3,04	100% Cohesion*
			3,55	100% Cohesion*
			3,95	100% Cohesion*
			3,66	100% Cohesion*
Mean value	$f_{ctm,surf,T_{min}}$	3,55	-	
Characteristic value	$f_{ctk,surf,T_{min}}$	2,78	-	
$(R_{T_{min,m}} = f_{ctm,surf,T_{min}} / f_{ctm,surf})$	Ratio	$R_{T_{min,m}}$	1,07	-
Bonding agent FRS-BA, repair mortar FRS-PC 11, structural bonding agent FRS-CS, CFRP strip FRS-L-S	Single values	$f_{cti,surf,T_{min}}$	3,38	100% Cohesion*
			3,67	100% Cohesion*
			3,17	100% Cohesion*
			3,49	100% Cohesion*
			3,59	100% Cohesion*
Mean value	$f_{ctm,surf,T_{min}}$	3,46	-	
Characteristic value	$f_{ctk,surf,T_{min}}$	3,0	-	
$(R_{T_{min,m}} = f_{ctm,surf,T_{min}} / f_{ctm,surf})$	Ratio	$R_{T_{min,m}}$	1,25	-
Structural bonding agent FRS-CS, CFRP strip FRS-L-S	Single values	$f_{cti,surf,T_{min}}$	3,70	100% Cohesion*
			3,58	100% Cohesion*
			3,78	100% Cohesion*
			3,78	100% Cohesion*
			3,68	100% Cohesion*
Mean value	$f_{ctm,surf,T_{min}}$	3,71	-	
Characteristic value	$f_{ctk,surf,T_{min}}$	3,51	-	
$(R_{T_{min,m}} = f_{ctm,surf,T_{min}} / f_{ctm,surf})$	Ratio	$R_{T_{min,m}}$	1,19	-
<p>Layer thicknesses:</p> <p>Bonding agent for the repair mortar FRS-BA: 500-800 g/m²</p> <p>Concrete repair mortar FRS-PC 11 $d_{M,max.}$: 30 mm</p> <p>Structural bonding agent FRS-CS $d_{G,min.}$: 1 mm</p> <p>CFRP strip FRS-L-S or FRS-L-H t_L: 1,4 mm</p> <p>Curing time: 7 days f_{cm}: 50,5 MPa ; f_{ck}: 49,0 MPa</p> <p>Curing temperature: 10 °C ± 2 °C</p> <p>*100 % Cohesive failure in the concrete substrate. Reference concrete according to EN 1542, class C50/60</p>				
fischer C-Fiber Force Strengthening System				Annex C19
<p>Kit Performance</p> <p>Bond strength of the C-Fiber Force Strengthening System to concrete cured at minimum installation temperature depending on the curing time</p>				

Shear resistance of the anchorage of CFRP strips externally bonded to concrete (without repair mortar)							
Type of the strip	Conc. comp. strength [MPa]	Conc. surf. tensile strength [MPa]	Ultimate anchorage load [kN]			Failure mode	
FRS-L-H	C12/15 f_{cm} : 18,6 f_{ck} : 14,1	$f_{ctim,surf}$: 1,47	Single values	F_{bLi}	84,17	100% Cohesion*	
		$f_{ctik,surf}$: 0,64			87,82	100% Cohesion*	
		$f_{ctim,surf}$: 1,59	-	Mean value	F_{bLm}	80,23	100% Cohesion*
		$f_{ctik,surf}$: 1,30				104,62	100% Cohesion*
		-	-	Characteristic value	F_{bLk}	89,21	-
-	-	-	-	61,00	-		
FRS-L-H	C30/37 f_{cm} : 33,2 f_{ck} : 29,7	$f_{ctim,surf}$: 2,25	Single values	F_{bLi}	116,75	100% Cohesion*	
		$f_{ctik,surf}$: 0,85			127,06	100% Cohesion*	
		$f_{ctim,surf}$: 1,81	-	Mean value	F_{bLm}	93,95	100% Cohesion*
		$f_{ctik,surf}$: -**				104,57	100% Cohesion*
		-	-	Characteristic value	F_{bLk}	110,58	-
-	-	-	-	72,71	-		
FRS-L-H	C50/60 f_{cm} : 47.6 f_{ck} : 42,3	$f_{ctim,surf}$: 4,04	Single values	F_{bLi}	121,19	100% Cohesion*	
		$f_{ctik,surf}$: 3,45			144,15	100% Cohesion*	
		$f_{ctim,surf}$: 2,10	-	Mean value	F_{bLm}	119,59	100% Cohesion*
		$f_{ctik,surf}$: 1,47				118,37	100% Cohesion*
		-	-	Characteristic value	F_{bLk}	125,83	-
-	-	-	-	93,56	-		
FRS-L-S	C12/15 f_{cm} : 18,6 f_{ck} : 14,1	$f_{ctim,surf}$: 2,26	Single values	F_{bLi}	83,11	100% Cohesion*	
		$f_{ctik,surf}$: 1,12			92,37	100% Cohesion*	
		$f_{ctim,surf}$: 1,10	-	Mean value	F_{bLm}	85,95	100% Cohesion*
		$f_{ctik,surf}$: -**				92,35	100% Cohesion*
		-	-	Characteristic value	F_{bLk}	88,45	-
-	-	-	-	76,17	-		
FRS-L-S	C30/37 f_{cm} : 33,2 f_{ck} : 29,7	$f_{ctim,surf}$: 2,45	Single values	F_{bLi}	109,49	100% Cohesion*	
		$f_{ctik,surf}$: 0,85			134,98	100% Cohesion*	
		$f_{ctim,surf}$: 2,10	-	Mean value	F_{bLm}	102,60	100% Cohesion*
		$f_{ctik,surf}$: 1,10				111,04	100% Cohesion*
		-	-	Characteristic value	F_{bLk}	114,53	-
-	-	-	-	77,39	-		
FRS-L-S	C50/60 f_{cm} : 47.6 f_{ck} : 42,3	$f_{ctim,surf}$: 3,80	Single values	F_{bLi}	112,53	100% Cohesion*	
		$f_{ctik,surf}$: 2,69			119,29	100% Cohesion*	
		$f_{ctim,surf}$: 2,57	-	Mean value	F_{bLm}	105,01	100% Cohesion*
		$f_{ctik,surf}$: 1,31				106,34	100% Cohesion*
		-	-	Characteristic value	F_{bLk}	110,79	-
-	-	-	-	93,58	-		
Bond length l_v of CFRP strip:			1000 mm				
Layer thickness of the structural bonding agent FRS-CS $d_{G,min}$:			1 mm				
Thickness of CFRP strips FRS-L-S or FRS-L-H t_L:			1,4 mm				
Width of the CFRP strip b_L:			100 mm				
fischer C-Fiber Force Strengthening System						Annex C20	
Kit Performance Shear resistance of the anchorage of FRS-L-H and FRS-L-S CFRP strips externally bonded to concrete (without repair mortar)							

Shear resistance of the anchorage of CFRP strips externally bonded to concrete (without repair mortar)

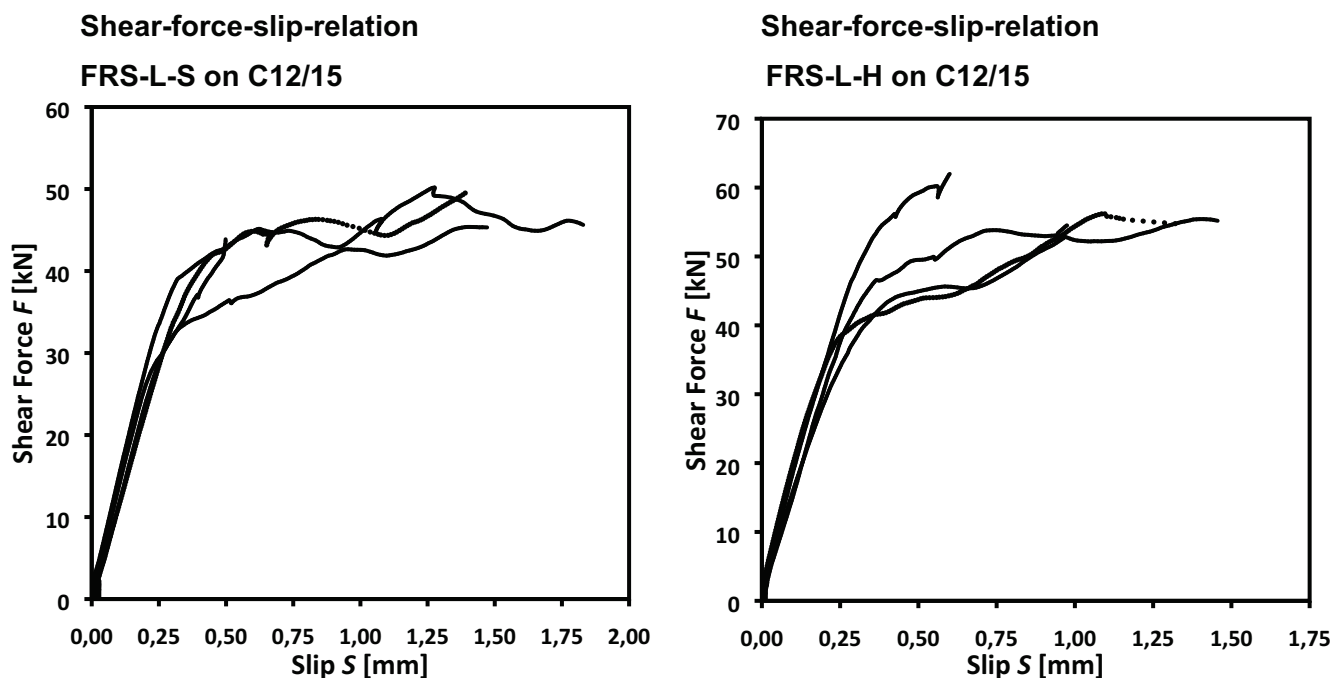


Figure C21.1: Shear force-slip curves of shear resistance measurements of the anchorage of FRS-L-S and FRS-L-H CFRP strips externally bonded to concrete of class C12/15.

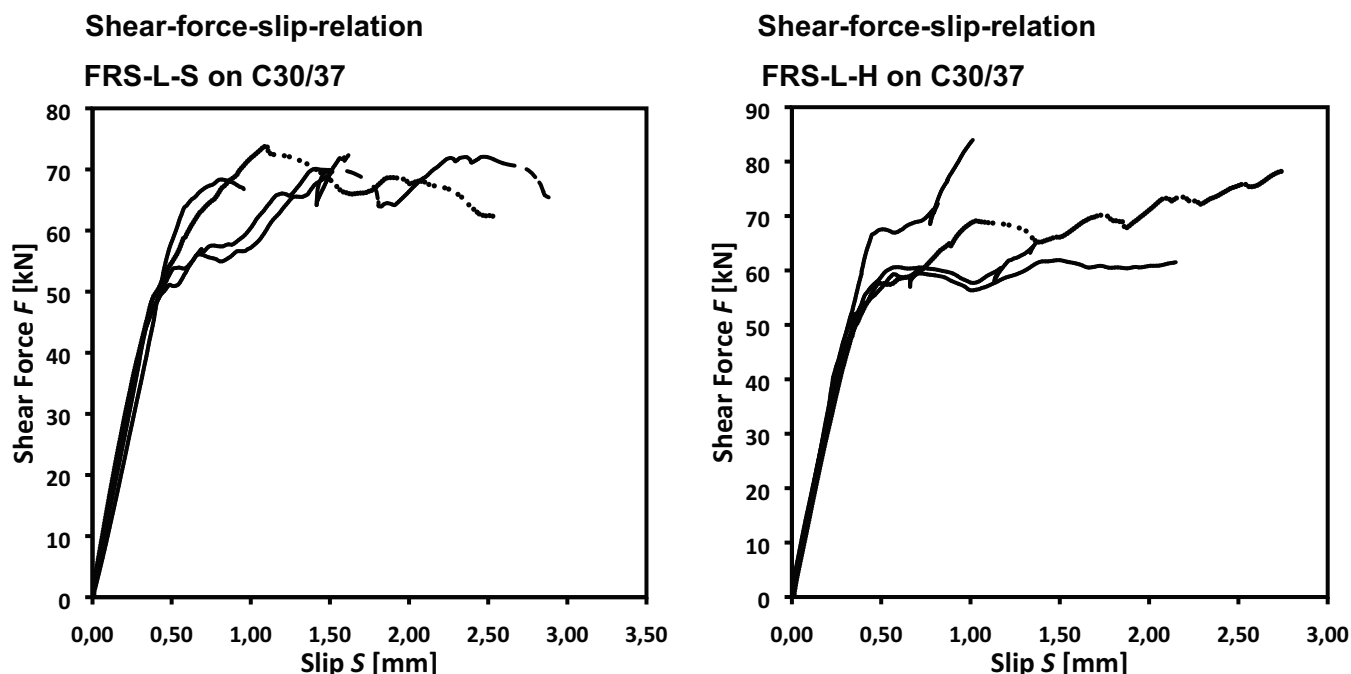


Figure C21.2: Shear force-slip curves of shear resistance measurements of the anchorage of FRS-L-S and FRS-L-H CFRP strips externally bonded to concrete of class C30/37.

fischer C-Fiber Force Strengthening System

Kit Performance

Shear resistance of the anchorage of FRS-L-H and FRS-L-S CFRP strips externally bonded to concrete (without repair mortar)

Annex C21

Shear resistance of the anchorage of CFRP strips externally bonded to concrete (without repair mortar)

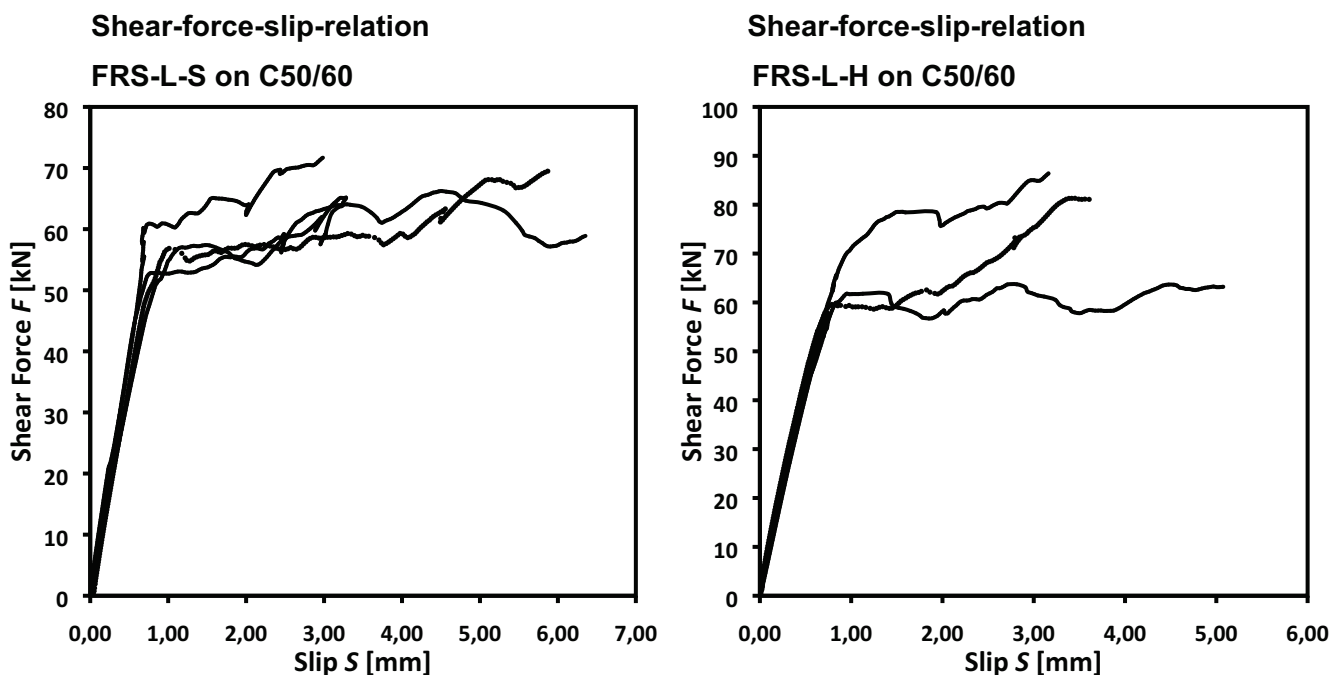


Figure C22: Shear-force-slip curves of shear resistance measurements of the anchorage of FRS-L-S and FRS-L-H CFRP strips externally bonded to concrete of class C50/60.

fischer C-Fiber Force Strengthening System

Kit Performance

Shear resistance of the anchorage of FRS-L-H and FRS-L-S CFRP strips externally bonded to concrete (without repair mortar)

Annex C22

English translation prepared by DIBt

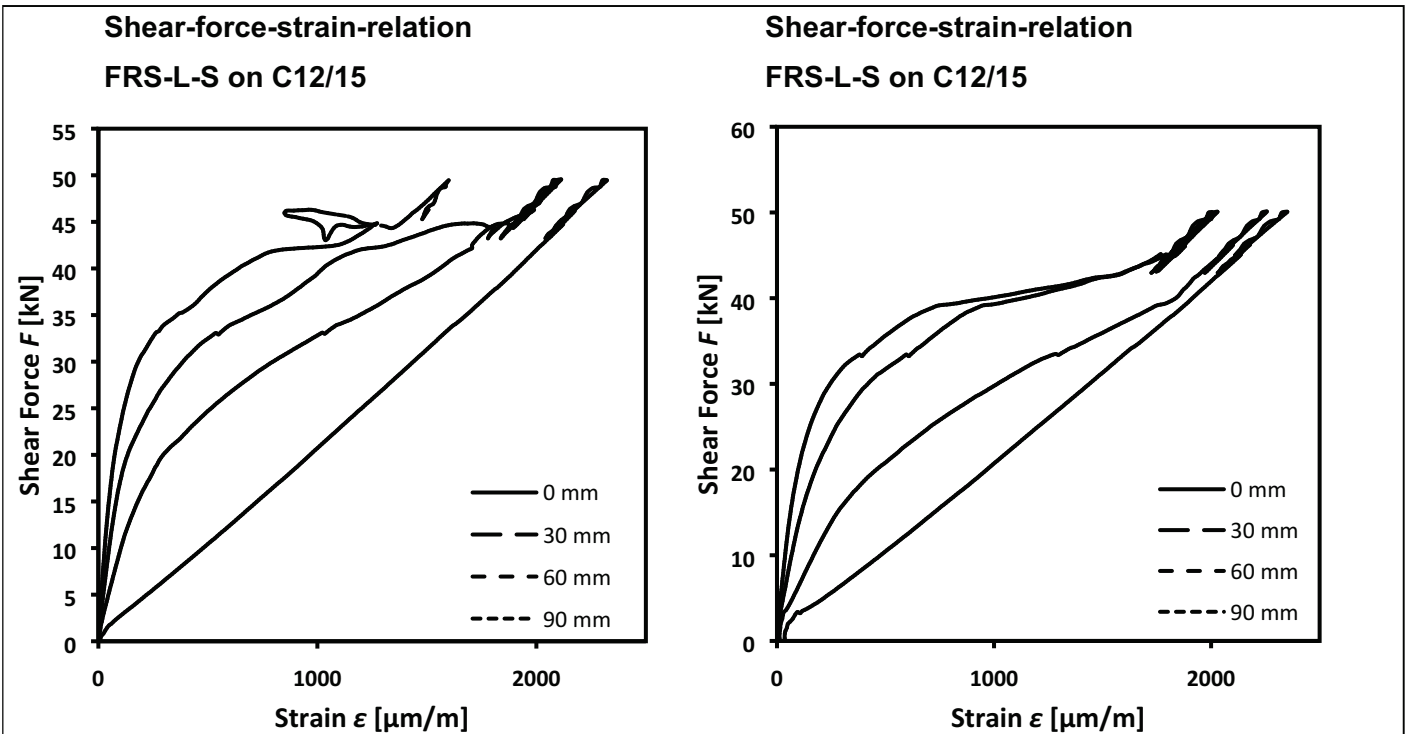


Figure C23.1: Shear-force-strain curves of shear resistance measurements of the anchorage of FRS-L-S CFRP strips externally bonded to concrete of class C12/15 along the bond length. Strain measurement at 0, 30, 60, 90 mm distances from the beginning of the bonded area.

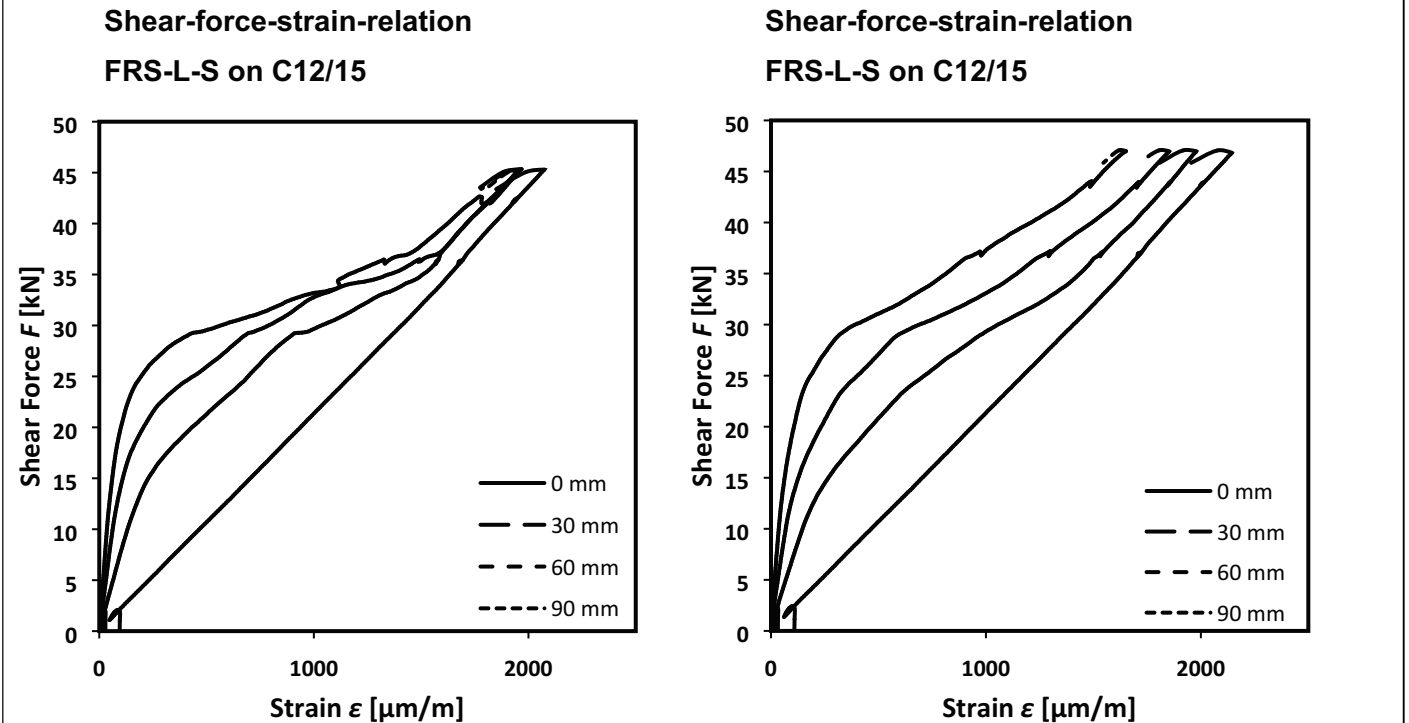


Figure C23.2: Shear-force-Strain curves of shear resistance measurements of the anchorage of FRS-L-S CFRP strips externally bonded to concrete of class C12/15 along the bond length. Strain measurement at 0, 30, 60, 90 mm distances from the load application point.

fischer C-Fiber Force Strengthening System	Annex C23
Kit Performance Shear resistance of the anchorage of FRS-L-S CFRP strips externally bonded to concrete (without repair mortar). Evaluation of the strains along the load application zone.	

English translation prepared by DIBt

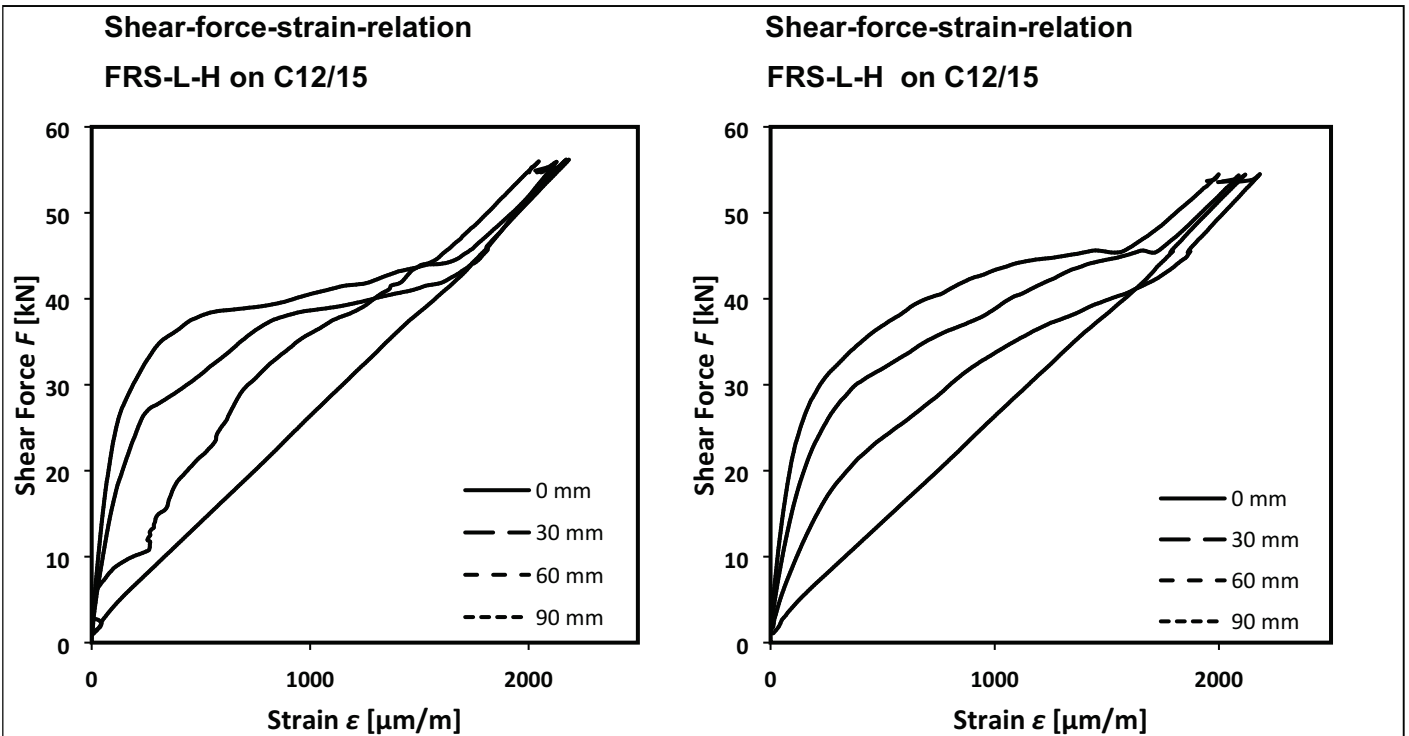


Figure C24.1: Shear-force-strain curves of shear resistance measurements of the anchorage of FRS-L-H CFRP strips externally bonded to concrete of class C12/15 along the bond length. Strain measurement at 0, 30, 60, 90 mm distances from the load application point.

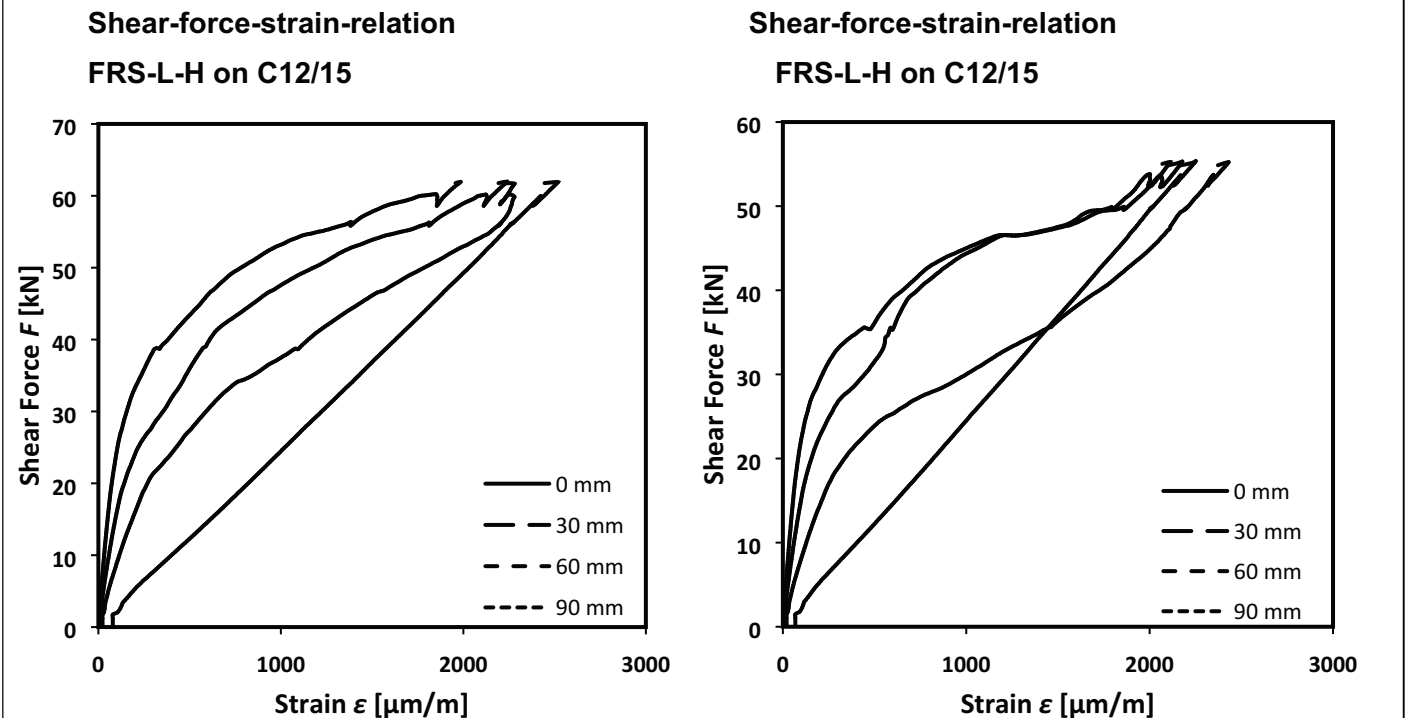


Figure C24.2: Shear-force-strain curves of shear resistance measurements of the anchorage of FRS-L-H CFRP strips externally bonded to concrete of class C12/15 along the bond length. Strain measurement at 0, 30, 60, 90 mm distances from the load application point.

fischer C-Fiber Force Strengthening System	Annex C24
<p>Kit Performance Shear resistance of the anchorage of FRS-L-H CFRP strips externally bonded to concrete (without repair mortar). Evaluation of the strains along the load application zone.</p>	

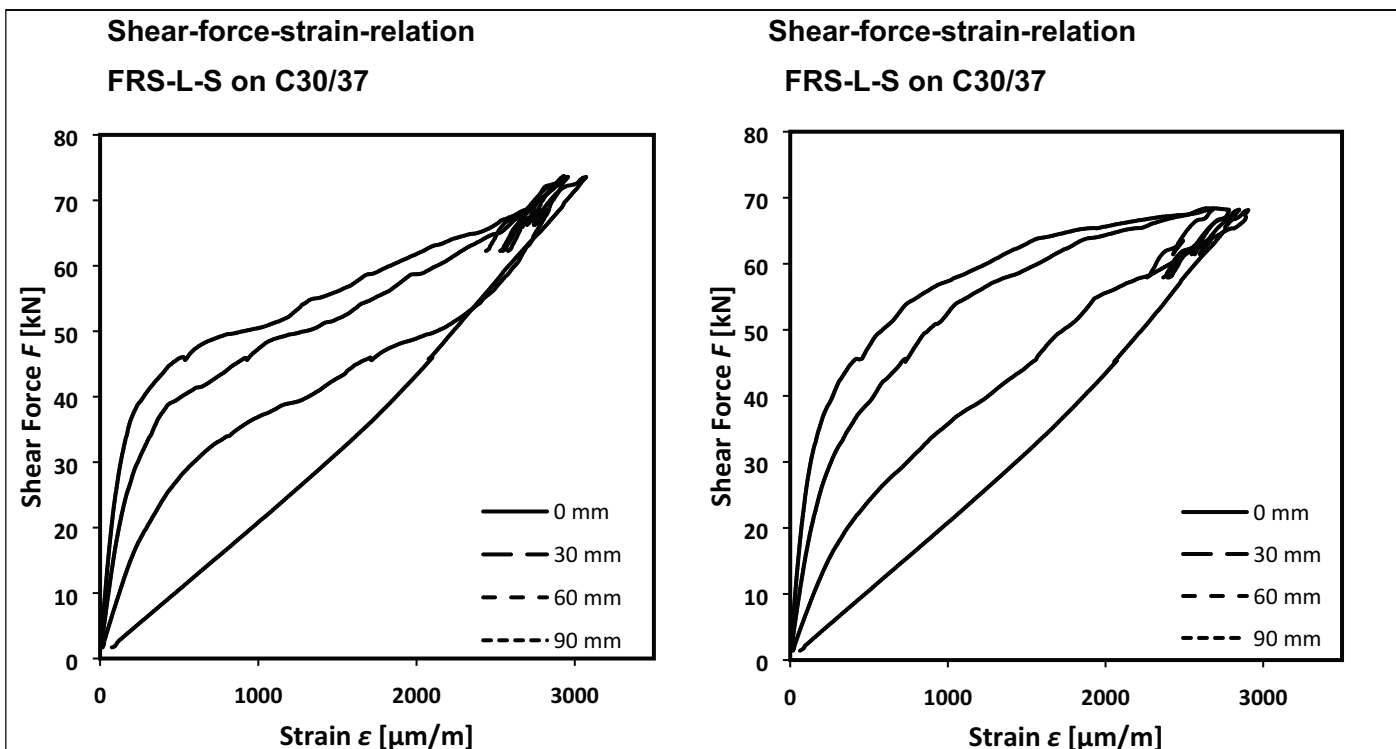


Figure C25.1: Shear-force-strain curves of shear resistance measurements of the anchorage of FRS-L-S CFRP strips externally bonded to concrete of class C30/37 along the bond length. Strain measurement at 0, 30, 60, 90 mm distances from the load application point.

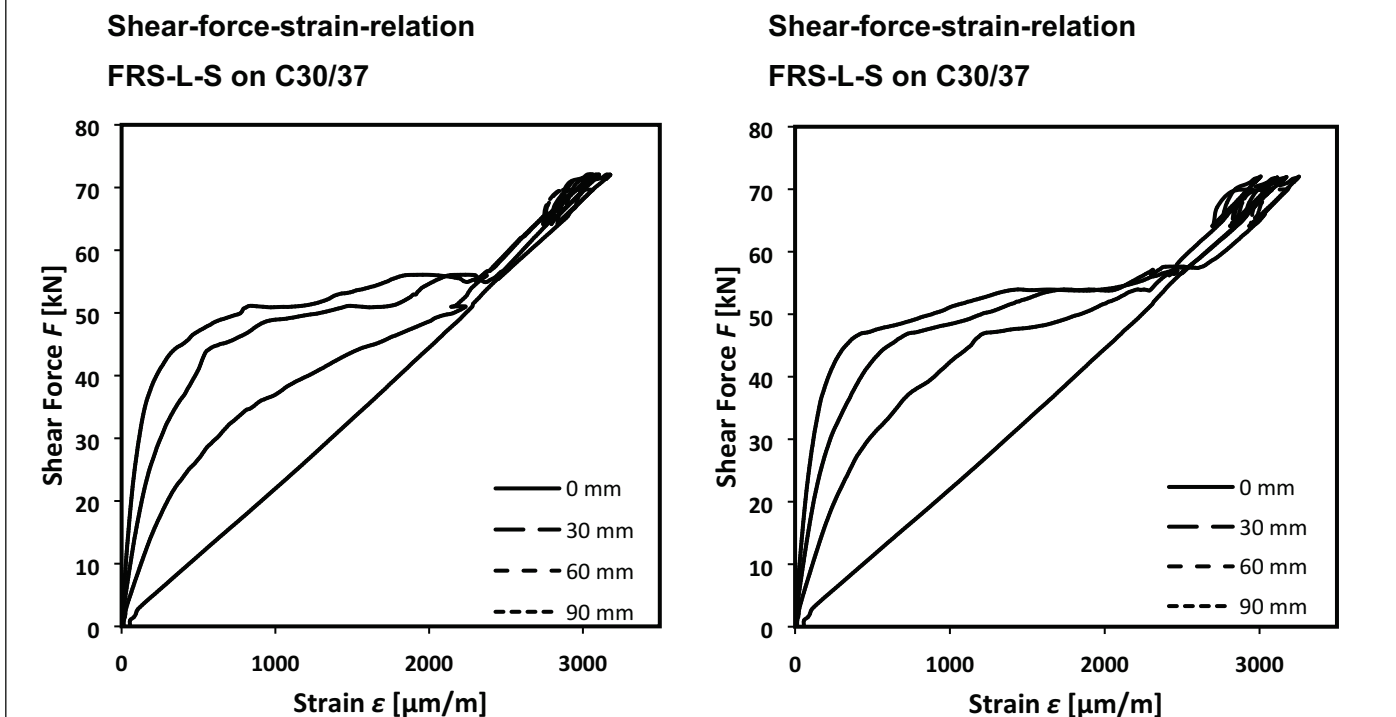


Figure C25.2: Shear-force-strain of shear resistance measurements of the anchorage of FRS-L-S CFRP strips externally bonded to concrete of class C30/37 along the bond length. Strain measurement at 0, 30, 60, 90 mm distances from the load application point.

fischer C-Fiber Force Strengthening System	Annex C25
Kit Performance Shear resistance of the anchorage of FRS-L-S CFRP strips externally bonded to concrete (without repair mortar). Evaluation of the strains along the load application zone	

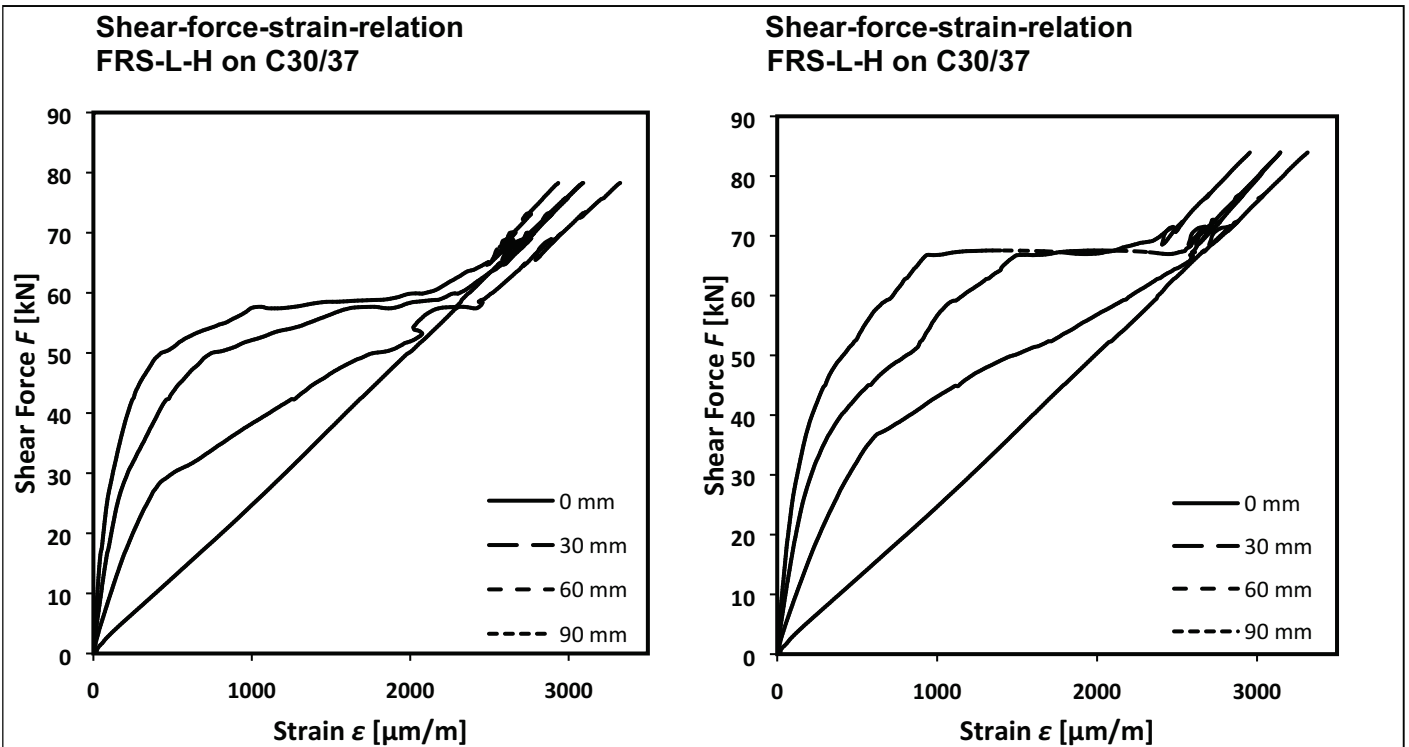


Figure C26.1: Shear-force-strain curves of shear resistance measurements of the anchorage of FRS-L-H CFRP strips externally bonded to concrete of class C30/37 along the bond length. Strain measurement at 0, 30, 60, 90 mm distances from the load application point.

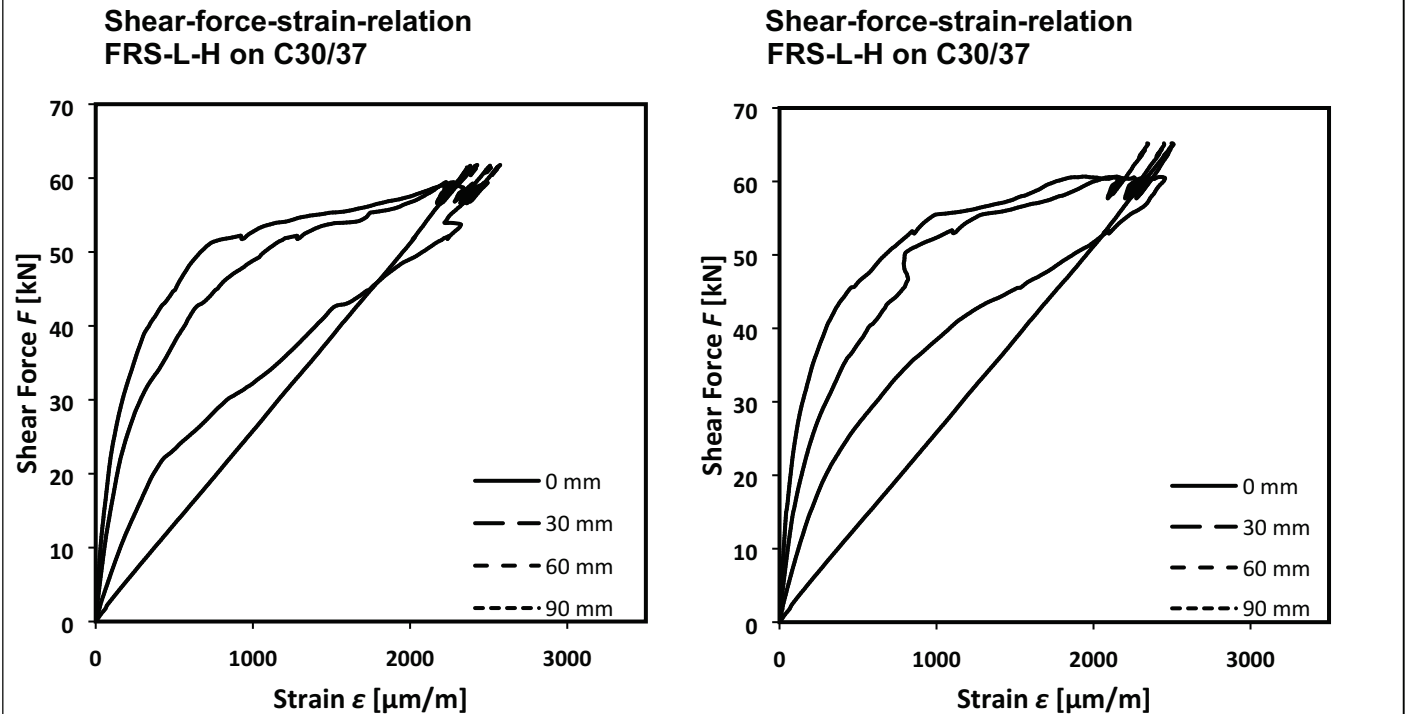


Figure C26.2: Shear-force-strain curves of shear resistance measurements of the anchorage of FRS-L-H CFRP strips externally bonded to concrete of class C30/37 along the bond length. Strain measurement at 0, 30, 60, 90 mm distances from the load application point.

fischer C-Fiber Force Strengthening System	Annex C26
Kit Performance Shear resistance of the anchorage of FRS-L-H CFRP strips externally bonded to concrete (without repair mortar). Evaluation of the strains along the load application zone	

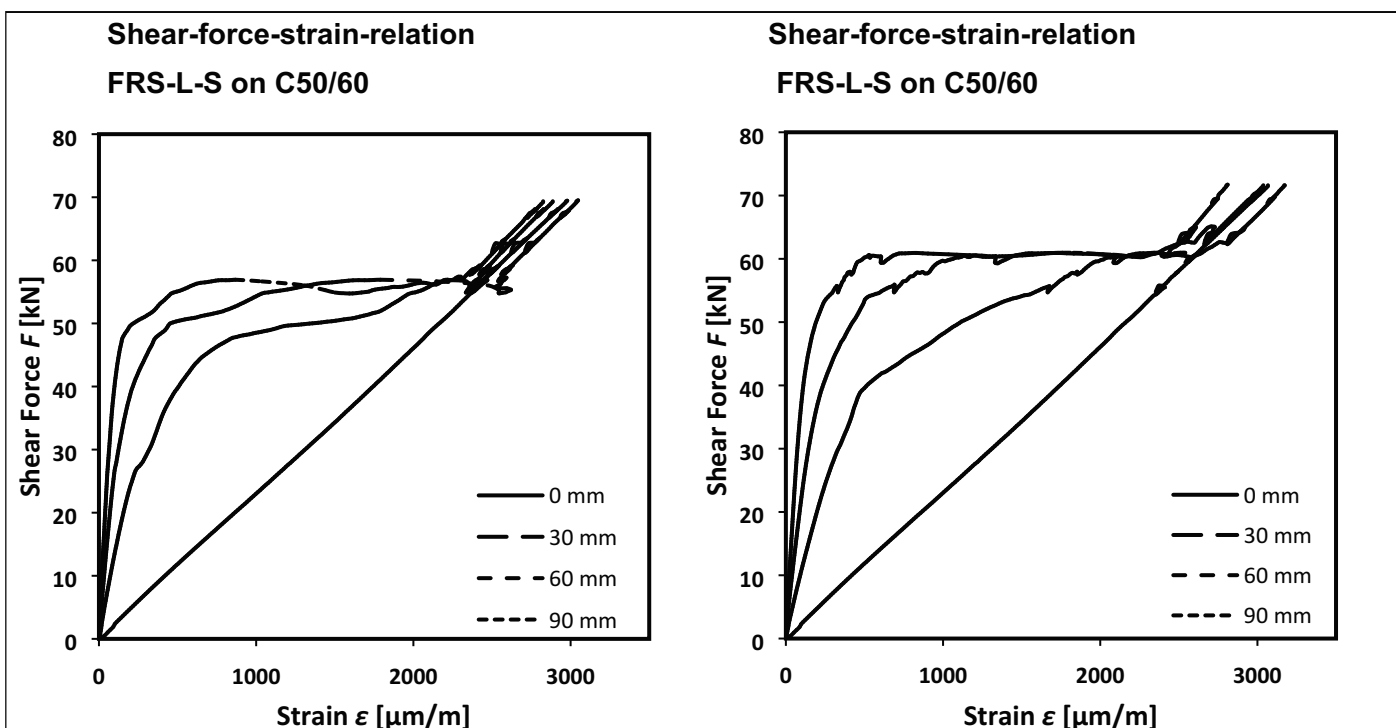


Figure C27.1: Shear-force-strain curves of shear resistance measurements of the anchorage of FRS-L-S CFRP strips externally bonded to concrete of class C50/60 along the bond length. Strain measurement at 0, 30, 60, 90 mm distances from the load application point.

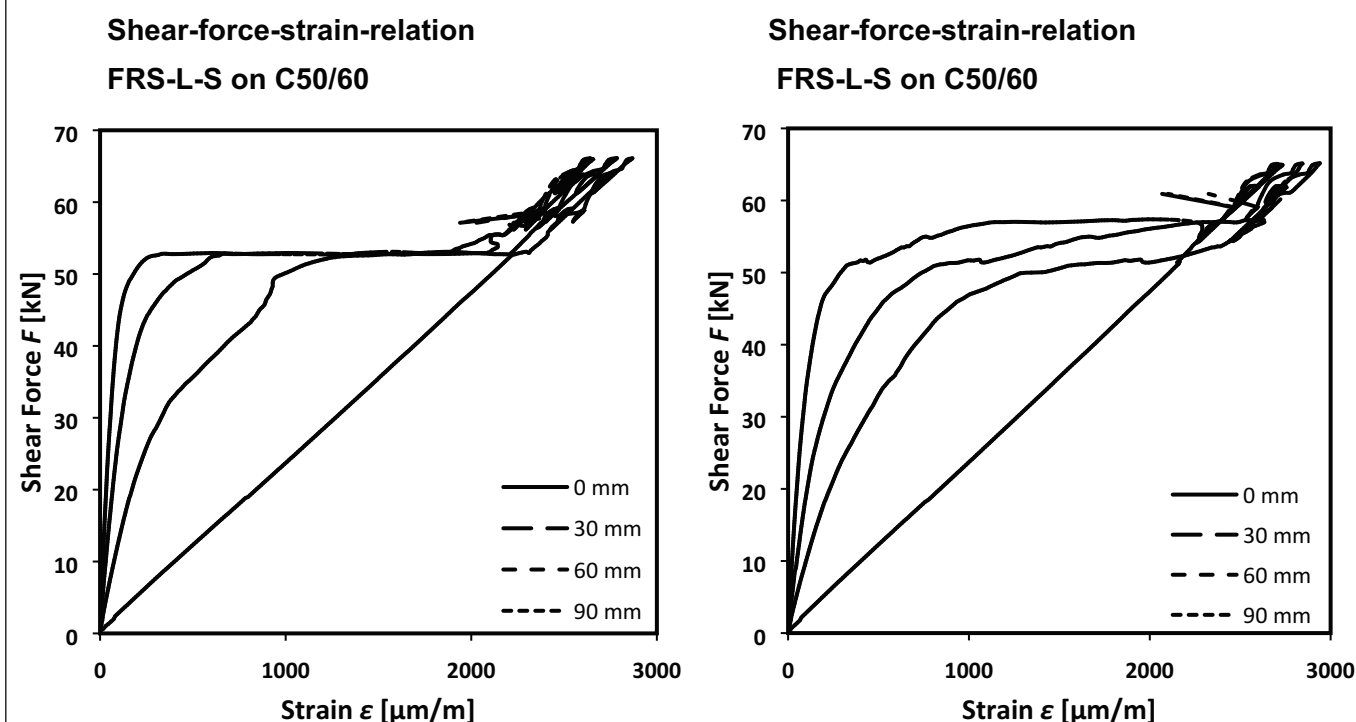


Figure C27.2: Shear-force-strain curves of shear resistance measurements of the anchorage of FRS-L-S CFRP strips externally bonded to concrete of class C50/60 along the bond length. Strain measurement at 0, 30, 60, 90 mm distances from the load application point.

fischer C-Fiber Force Strengthening System

Kit Performance

Shear resistance of the anchorage of FRS-L-S CFRP strips externally bonded to concrete (without repair mortar). Evaluation of the strains along the load application zone

Annex C27

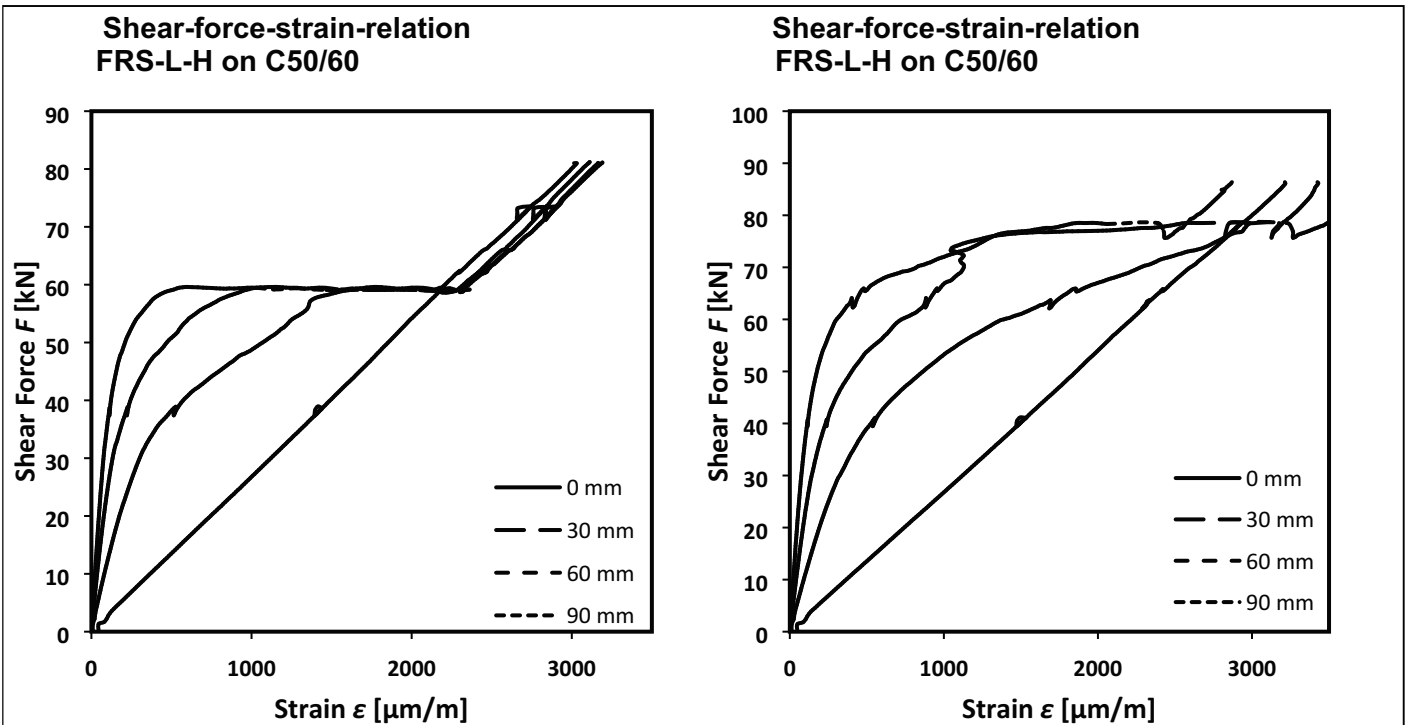


Figure C28.1: Shear-force-strain curves of shear resistance measurements of the anchorage of FRS-L-H CFRP strips externally bonded to concrete of class C50/60 along the bond length. Strain measurement at 0, 30, 60, 90 mm distances from the load application point.

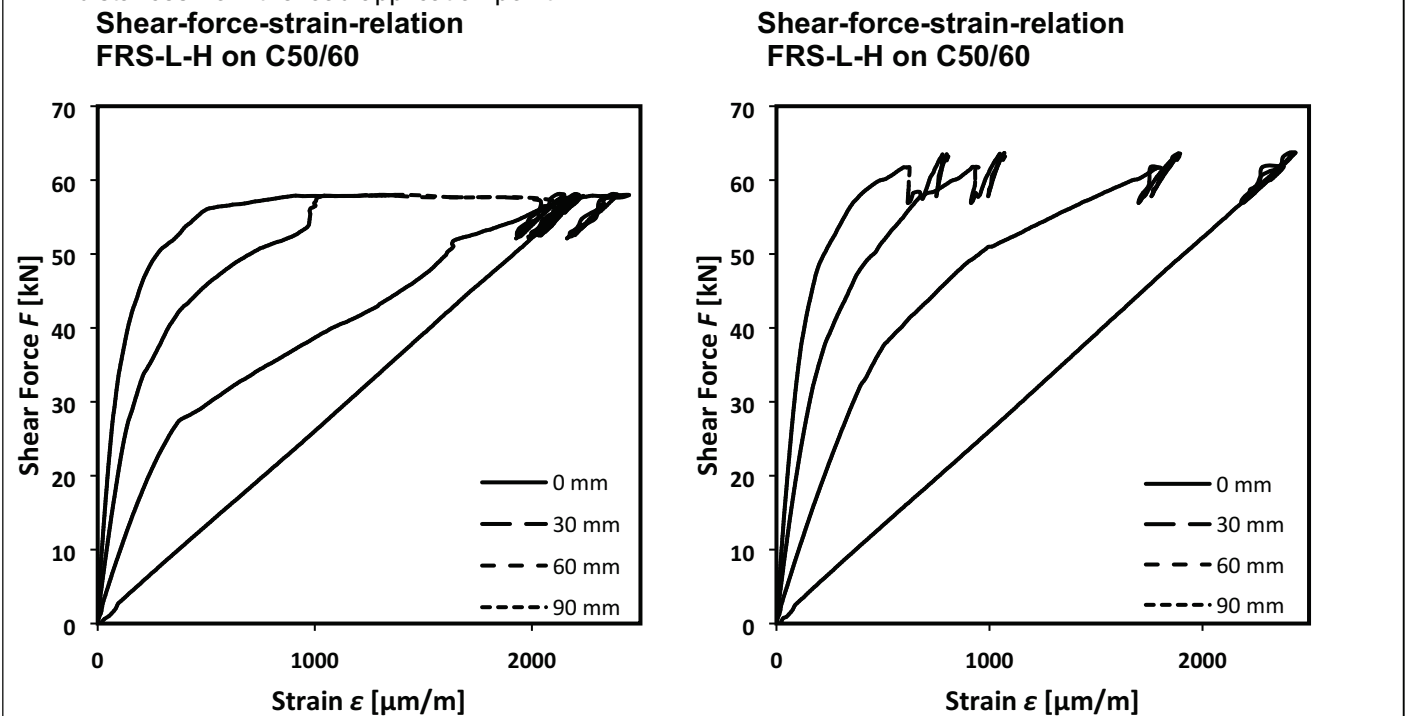


Figure C28.2: Shear-force-strain curves of shear resistance measurements of the anchorage of FRS-L-H CFRP strips externally bonded to concrete of class C50/60 along the bond length. Strain measurement at 0, 30, 60, 90 mm distances from the load application point.

fischer C-Fiber Force Strengthening System	Annex C28
Kit Performance Shear resistance of the anchorage of FRS-L-S CFRP strips externally bonded to concrete (without repair mortar). Evaluation of the strains along the load application zone	

Ultimate anchorage load of near surface mounted CFRP strips								
Concrete grade	Bond length l_{bl} [mm]	Edge distance a_r [mm]	Ultimate load [kN]					Type of Fracture
C12/15	300	30	Single values	Test No.	4.1**	F_{bLi}	19,28	A*
					4.2		18,05	B, A*
			4.3	20,16	B, A*			
Mean value						F_{bLm}	19,16	
Characteristic value						F_{bLk}	15,60	
C12/15	300	150	Single values	Test No.	5.1	F_{bLi}	29,43	B*
					5.2**		30,51	B*
			5.3	24,17	B*			
Mean value						F_{bLm}	28,04	-
Characteristic value						F_{bLk}	16,61	-
C50/60	100	150	Single values	Test No.	2.1	F_{bLi}	24,69	B*
					2.2		23,16	B*
			2.3**	28,59	B*			
Mean value						F_{bLm}	25,48	-
Characteristic value						F_{bLk}	16,04	-
C50/60	300	30	Single values	Test No.	3.1	F_{bLi}	26,00	B, L*
					3.2		30,82	B, L*
			3.3	29,85	B, L*			
Mean value						F_{bLm}	28,89	-
Characteristic value						F_{bLk}	20,31	-
C50/60	300	150	Single values	Test No.	1.1	F_{bLi}	25,34	B*
					1.2**		28,81	B*
			1.3**	35,00	B*			
Mean value						F_{bLm}	29,72	-
Characteristic value						F_{bLk}	13,23	-
<p>Concrete strength: f_{cm}: 20,3 MPa; f_{ck}: 19,0 MPa (C12/15) f_{cm}: 48,1 MPa; f_{ck}: 46,8 MPa (C50/60)</p> <p>Installation parameters: Width of the slot b_s: 3.7 - 4,2 mm Depth of the slots t_s: 13 mm 21 °C, 50 Rh, cured for 7 days</p> <p>Type and geometry of the CFRP strips: FRS-L-S NSM 10 x 1,7 mm</p> <p>Characteristics of the CFRP strips and structural bonding agent: FRS-L-S NSM: E_{Lm}: 173 GPa ; f_{Lm}: 3054 MPa; W_{fi}: 77,4 % FRS-CS: f_{Gflm}: 31,6 MPa ; f_{Gflk}: 24,0 MPa f_{Gcm}: 89,4 MPa ; f_{Gck}: 87,0 MPa</p> <p>*Type of failure: A \triangleq Cohesive failure in the concrete substrate; B \triangleq Cohesive failure in the adhesive; L \triangleq Tensile failure of the CFRP strip</p> <p>** Recalculation of the slip from the fiber optic strain measurement not possible</p>								
fischer C-Fiber Force Strengthening System							Annex C29	
Performance Ultimate anchorage load of near surface mounted FRS-L-S NSM CFRP strips								