

# UL-EU CERTIFICATE

Certificate No. UL-EU-01032-CPR  
Page 1/28  
Date of Issue 2016-11-10  
Revision 2022-10-26

Certificate Holder FISCHERWERKE GMBH & CO KG  
Klaus-Fischer-Strasse 1  
72178, Waldachtal  
Deutschland

Manufacturer A/009

Certified Product Type Fire Stop – Pipe Wrap  
Product Trade Name Intumescent Pipe Wrap FiPW-E  
Trademark N/A  
Rating/Classification See Appendix

Harmonised Technical Specifications EAD 350454-00-1104 / EN 13501-2 / EN 13501-1  
Expiry date 2026-11-09



A blue ink signature of Chris Johnson.

Authorized Certification Decision Maker  
Chris Johnson

This is to certify that representative samples of the Certified Product listed above have been investigated by Underwriters Laboratories to the Standard(s) indicated on this Certificate, in accordance with the UL Global Services Agreement and the UL-EU Mark Service Terms and Conditions ("Agreement"). The Certificate Holder is entitled to use the UL-EU Mark for the Certified Product listed on the certificate and manufactured at the production site(s) listed, in accordance with the terms of the Agreement. Only those products bearing the UL-EU Mark for Europe should be considered as being covered by UL's UL-EU Mark Service. This Certificate shall remain valid through the Expiration date, unless a Standard identified on this Certificate is amended or withdrawn prior to that date or there is a non-compliance with the Agreement.



# Appendix UL-EU CERTIFICATE

**Certificate No.** UL-EU-01032-CPR  
**Page** 2/28  
**Date of Issue** 2016-11-10

This certificate relates to the use of Intumescent Pipe Wrap FiPW-E for fire stopping where services penetrate floors and walls. The detailed scope is given in pages 3 to 27 of this Certificate. This shows the thickness and acceptable dimensions, substrates and orientations required to provide fire resistance periods of up to 240 minutes (EI 240).

The product is certificated on the basis of:

- ii) Inspection and surveillance of factory production control by UL
- iii) Fire resistance test data in accordance with 1366-3: 2009
- iv) Classification in accordance with EN 13501-2
- v) Classification in accordance with EN 13501-1
- vi) Durability and Servicability as defined in EAD 350454-00-1104

The durability class of Intumescent Pipe Wrap FiPW-E is X - intended for use in conditions exposed to weathering (includes all lower classes).



# Appendix UL-EU CERTIFICATE

Certificate No. UL-EU-01032-CPR  
 Page 3/28  
 Date of Issue 2016-11-10

Product-type: Pipe Wrap		Intended use: Penetration Seal
Assessment method	Essential characteristic	Product Performance
<b>BWR 2 Safety in case of fire</b>		
EN 13501-1	Reaction to fire	Class E
EN 13501-2	Resistance to fire	See pages 4 - 27
<b>BWR 3 Hygiene, health and environment</b>		
EN 1026	Air permeability	No performance determined
EAD 350454-00-1104, Annex C	Water permeability	No performance determined
Declaration of manufacturer & EN 16516	Content, emission and/or release of dangerous substances	Use category IA1, S/W2 Declaration of manufacturer
<b>BWR 4 Safety in use</b>		
EOTA TR 001:2003	Mechanical resistance and stability	No performance determined
EOTA TR 001:2003	Resistance to impact/movement	No performance determined
EOTA TR 001:2003	Adhesion	No performance determined
EAD 350454-00-1104, Clause 2.2.9	Durability	X
<b>BWR 5 Protection against noise</b>		
EN 10140-1,2,4,5/ EN ISO 717-1	Airborne sound insulation	No performance determined
<b>BWR 6 Energy economy and heat retention</b>		
EN 12664, EN 12667, EN 12939, EN ISO 8990, EN ISO 6946, EN ISO 14683, EN ISO 10211, EN ISO 10456	Thermal properties	No performance determined
EN ISO 12572, EN 12086, EN ISO 10456	Water vapour permeability	No performance determined





# Appendix UL-EU CERTIFICATE

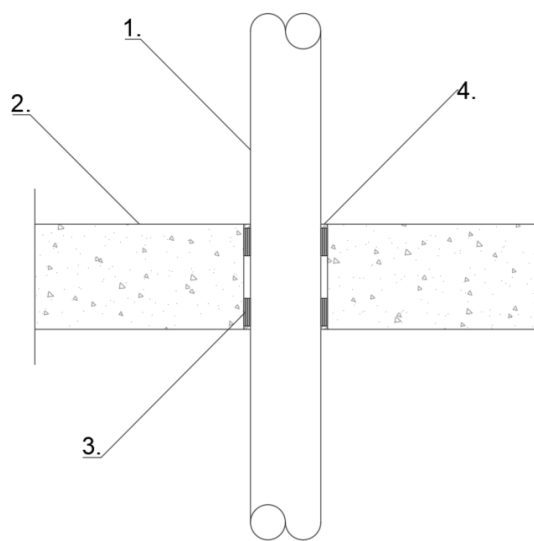
Certificate No. UL-EU-01032-CPR  
 Page 4/28  
 Date of Issue 2016-11-10

Floors

Rigid Floors Minimum Thickness 150 mm

Plastic pipes

Rigid Floors  $\geq 150$  mm



## Key

1. Plastic Pipe
2. Rigid floor
3. Intumescent Pipe Wrap FiPW-E
4. fischer FiAM Intumescent Acoustic Mastic

Penetration Service	Annular Space (mm)	Distances (mm)	Installation	Classification
PVC-U, PVC-C <sup>(1)</sup> – See Graph 1 for scope	$\leq 10$ depending on product size	Edge – 10 Penetration Service $\geq 100$	Intumescent Pipe Wrap FiPW-E fit into topside and underside of the floor recessed by 5mm. fischer FiAM Intumescent Acoustic Mastic applied to topside and underside of the floor sealing in the wrap	EI 120 U/C, C/C
PVC-U, PVC-C <sup>(1)</sup> – See Graph 2 for scope				EI 60 U/C, C/C
PE, ABS, SAN-PVC <sup>(2)</sup> – See Graph 5 for scope				EI 120 U/C, C/C
PE, ABS, SAN-PVC <sup>(2)</sup> – See Graph 6 for scope				EI 120 U/C, C/C
PP <sup>(3)</sup> – See Graph 3 for scope				EI 120 U/C, C/C
PP <sup>(3)</sup> – See Graph 4 for scope				EI 15 – U/C, C/C

All services supported with pipe supports at 400 mm from the upper face of the floor.

<sup>(1)</sup> PVC-U pipe according to EN 1329-1, EN 1452-1 and EN 1453-1 and PVC-C according to EN 1566-1

<sup>(2)</sup> PE pipe according to EN 1519-1, EN 12201-2 and EN 12006-1, ABS according to EN 1455-1 and pipes made from SAN+PVC according to EN 1565-1

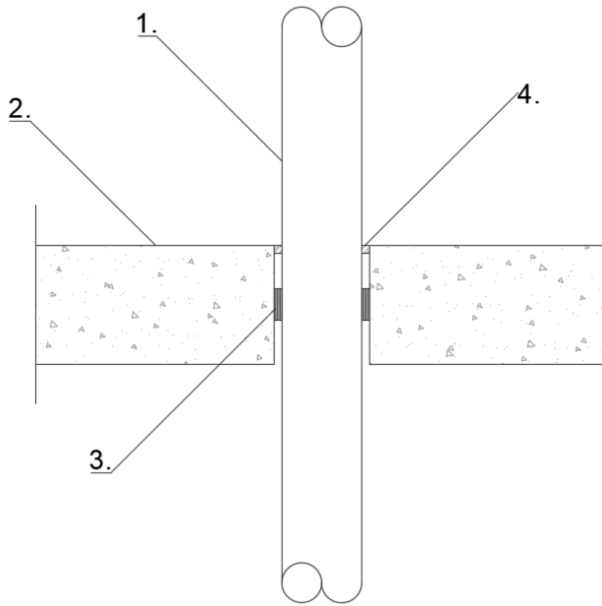
<sup>(3)</sup> PP pipe according to EN 1852-1: 2009



# Appendix UL-EU CERTIFICATE

Certificate No. UL-EU-01032-CPR  
 Page 5/28  
 Date of Issue 2016-11-10

Rigid Floors  $\geq 150$  mm



## Key

1. Plastic Pipe
2. Rigid floor
3. Intumescent Pipe Wrap FiPW-E
4. fischer FiAM Intumescent Acoustic Mastic

Penetration Service	Annular Space (mm)	Distances (mm)	Installation	Classification
PVC-U, PVC-C <sup>(1)</sup> – See Graph 7 for scope	As required by dimensions of Intumescent Pipe Wrap FiPW-E	Edge – 10 Penetration Service $\geq 100$	Intumescent Pipe Wrap FiPW-E fit into middle or topside of the floor recessed by at least 5mm. fischer FiAM Intumescent Acoustic Mastic applied to topside and underside of the floor sealing in the wrap	EI 60 U/C, C/C
PE, ABS, SAN-PVC <sup>(2)</sup> – See Graph 8 for scope				EI 240 U/C, C/C
PP <sup>(3)</sup> – See Graph 9 for scope				EI 120 – U/C, C/C

All services supported with pipe supports at 400 mm from the upper face of the floor.

<sup>(1)</sup> PVC-U pipe according to EN 1329-1, EN 1452-1 and EN 1453-1 and PVC-C according to EN 1566-1

<sup>(2)</sup> PE pipe according to EN 1519-1, EN 12201-2 and EN 12006-1, ABS according to EN 1455-1 and pipes made from SAN+PVC according to EN 1565-1

<sup>(3)</sup> PP pipe according to EN 1852-1: 2009



# Appendix UL-EU CERTIFICATE

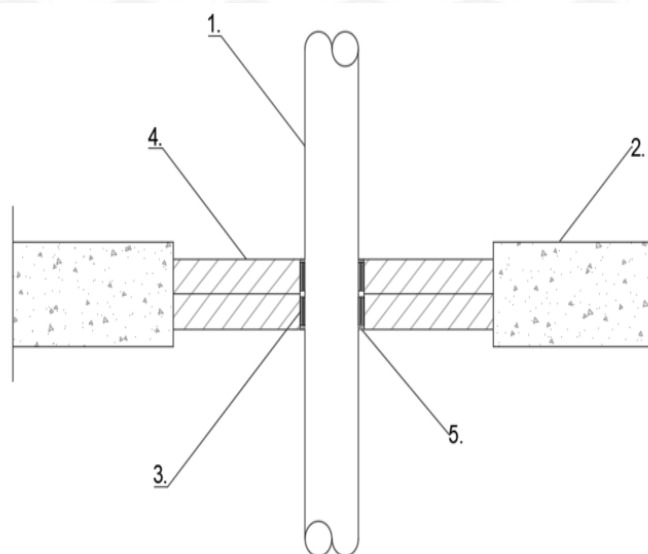
Certificate No. UL-EU-01032-CPR

Page 6/28

Date of Issue 2016-11-10

Plastic pipes in fischer FCPS Coated Panel System

Rigid Floors  $\geq 150$  mm



## Key

1. Plastic Pipe
2. Rigid floor
3. Intumescent Pipe Wrap FiPW-E
4. fischer FCPS Coated Panel System
5. fischer FiAM Intumescent Acoustic Mastic

Penetration Service	Opening Size (mm)	Distances (mm)	Installation	Classification
PVC-U, PVC-C <sup>(1)</sup> – See Graph 1 for scope	$\leq 1500 \times 1100$	Edge $\geq 0$ Penetration Service $\geq 0$	Intumescent Pipe Wrap FiPW-E fit into topside and underside of the floor recessed by 5mm. Friction fit fischer FCPS Coated Panel System into aperture around Intumescent Pipe Wrap FiPW-E. fischer FiAM Intumescent Acoustic Mastic applied to topside and underside of the floor sealing in the wrap	EI 60 U/C, C/C
PE, ABS, SAN-PVC <sup>(2)</sup> – See Graph 5 for scope				
PP <sup>(3)</sup> – See Graph 3 for scope				

All services supported with pipe supports at 400 mm from the upper face of the floor.

<sup>(1)</sup> PVC-U pipe according to EN 1329-1, EN 1452-1 and EN 1453-1 and PVC-C according to EN 1566-1

<sup>(2)</sup> PE pipe according to EN 1519-1, EN 12201-2 and EN 12006-1, ABS according to EN 1455-1 and pipes made from SAN+PVC according to EN 1565-1

<sup>(3)</sup> PP pipe according to EN 1852-1: 2009





# Appendix UL-EU CERTIFICATE

Certificate No. UL-EU-01032-CPR

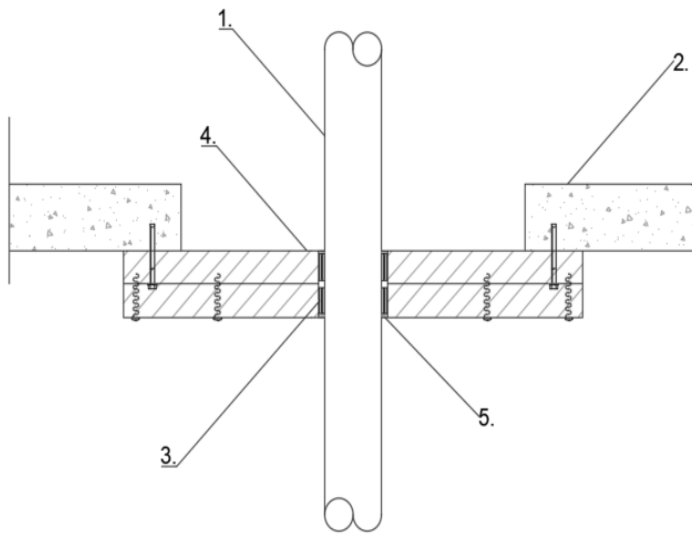
Page 7/28

Date of Issue 2016-11-10

Rigid Floors Minimum Thickness 100 mm

Plastic pipes in fischer FCPS Coated Panel System

Rigid Floors  $\geq 100$  mm



## Key

1. Plastic Pipe
2. Rigid floor
3. Intumescent Pipe Wrap FiPW-E
4. fischer FCPS Coated Panel System
5. fischer FiAM Intumescent Acoustic Mastic

Penetration Service	Opening Size (mm)	Distances (mm)	Installation	Classification
PVC-U, PVC-C <sup>(1)</sup> – See Graph 1 for scope	$\leq 1300 \times 1000$	Edge $\geq 0$ Penetration Service $\geq 0$	Intumescent Pipe Wrap FiPW-E fit into topside and underside of the floor recessed by 5mm. Pattress fit fischer FCPS Coated Panel System on to aperture around Intumescent Pipe Wrap FiPW-E. fischer FiAM Intumescent Acoustic Mastic applied to topside and underside of the floor sealing in the wrap	EI 60 U/C, C/C
PE, ABS, SAN-PVC <sup>(2)</sup> – See Graph 5 for scope				
PP <sup>(3)</sup> – See Graph 3 for scope				

All services supported with pipe supports at 400 mm from the upper face of the floor.

<sup>(1)</sup> PVC-U pipe according to EN 1329-1, EN 1452-1 and EN 1453-1 and PVC-C according to EN 1566-1

<sup>(2)</sup> PE pipe according to EN 1519-1, EN 12201-2 and EN 12006-1, ABS according to EN 1455-1 and pipes made from SAN+PVC according to EN 1565-1

<sup>(3)</sup> PP pipe according to EN 1852-1: 2009



# Appendix UL-EU CERTIFICATE

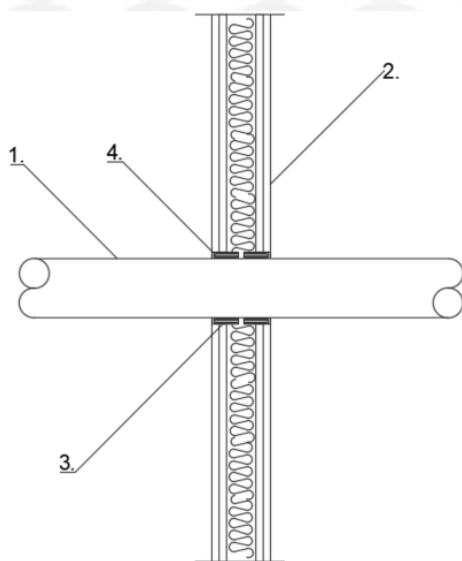
Certificate No. UL-EU-01032-CPR  
Page 8/28  
Date of Issue 2016-11-10

Walls

Flexible or Rigid Walls Minimum Thickness 100 mm

Plastic pipes

Flexible or Rigid Walls  $\geq 100$  mm



## Key

1. Plastic Pipe
2. Flexible Wall
3. Intumescent Pipe Wrap FiPW-E
4. fischer FiAM Intumescent Acoustic Mastic

Penetration Service	Annular Space (mm)	Distances (mm)	Installation	Classification
PVC-U, PVC-C <sup>(1)</sup> – See Graph 10 for scope	As required by dimensions of Intumescent Pipe Wrap FiPW-E	Penetration Service $\geq 100$	Intumescent Pipe Wrap FiPW-E fit into both sides of the wall recessed by 5 mm. fischer FiAM Intumescent Acoustic Mastic applied to each face of the wall sealing in the wrap.	EI 90 U/C, C/C
PP <sup>(3)</sup> – See Graph 11 for scope				EI 120 U/C, C/C
PP <sup>(3)</sup> – See Graph 12 for scope				EI 90 U/C, C/C
PE, ABS, SAN-PVC <sup>(2)</sup> – See Graph 13 for scope				E 120, EI 90 – U/C, C/C
PE, ABS, SAN-PVC <sup>(2)</sup> – See Graph 14 for scope				EI 90 – U/C, C/C

All services supported with pipe supports at 400 mm from both faces of the wall.

<sup>(1)</sup> PVC-U pipe according to EN 1329-1, EN 1452-1 and EN 1453-1 and PVC-C according to EN 1566-1

<sup>(2)</sup> PE pipe according to EN 1519-1, EN 12201-2 and EN 12006-1, ABS according to EN 1455-1 and pipes made from SAN+PVC according to EN 1565-1

<sup>(3)</sup> PP pipe according to EN 1852-1: 2009



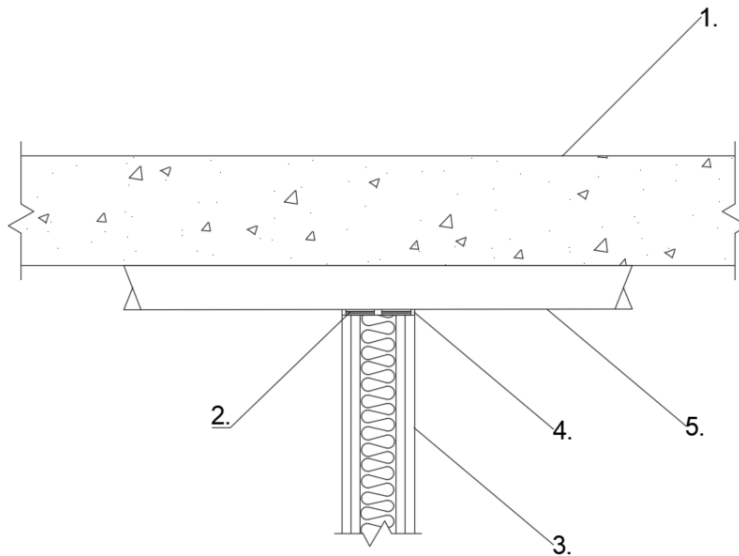


# Appendix UL-EU CERTIFICATE

Certificate No. UL-EU-01032-CPR  
 Page 9/28  
 Date of Issue 2016-11-10

Plastic duct against soffit

Flexible or Rigid Walls  $\geq 100$  mm



## Key

1. Concrete Soffit
2. Intumescent Pipe Wrap FiPW-E
3. Flexible Wall
4. fischer FiAM Intumescent Acoustic Mastic
5. Plastic Duct

Penetration Service	Annular Space (mm)	Distances (mm)	Installation	Classification
220 mm x 90 mm, 2 mm wall thickness PVC duct	As required by dimensions of Intumescent Pipe Wrap FiPW-E	Penetration Service $\geq 100$	Intumescent Pipe Wrap FiPW-E fitted around the sides and bottom of the duct within the partition (3 sides in total) recessed by 5 mm. fischer FiAM Intumescent Acoustic Mastic applied to both sides of the wall sealing in the wrap	EI 60 U/C, C/C

All services supported with pipe supports at 400 mm from both faces of the wall.



# Appendix UL-EU CERTIFICATE

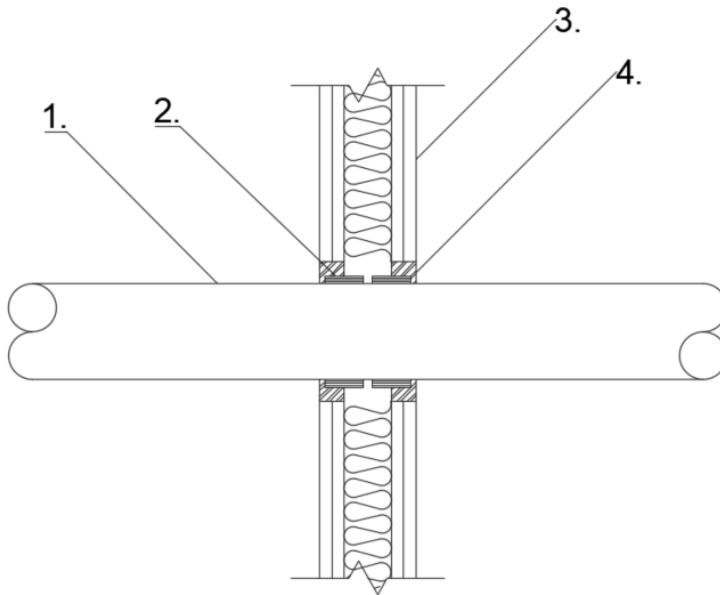
Certificate No. UL-EU-01032-CPR

Page 10/28

Date of Issue 2016-11-10

Plastic pipes in fischer FiAM Intumescent Acoustic Mastic

Flexible or Rigid Walls  $\geq 100$  mm



## Key

1. Plastic Pipe
2. Intumescent Pipe Wrap FiPW-E
3. Flexible Wall
4. fischer FiAM Intumescent Acoustic Mastic

Penetration Service	Annular Space (mm)	Distances (mm)	Installation	Classification
PVC-U, PVC-C <sup>(1)</sup> – See Graph 15 for scope	As required by dimensions of Intumescent Pipe Wrap FiPW-E + $\geq 22.5$ mm	Penetration Service $\geq 100$	Intumescent Pipe Wrap FiPW-E fit into both sides of the wall recessed by 5 mm. fischer FiAM Intumescent Acoustic Mastic applied to both sides of the wall sealing in the wrap 25 mm depth above Intumescent Pipe Wrap FiPW-E	EI 90 U/C, C/C
PE, ABS, SAN-PVC <sup>(2)</sup> – See Graph 13 for scope				
PP <sup>(3)</sup> – See Graph 11 for scope				

All services supported with pipe supports at 400 mm from both faces of the wall.

<sup>(1)</sup> PVC-U pipe according to EN 1329-1, EN 1452-1 and EN 1453-1 and PVC-C according to EN 1566-1

<sup>(2)</sup> PE pipe according to EN 1519-1, EN 12201-2 and EN 12006-1, ABS according to EN 1455-1 and pipes made from SAN+PVC according to EN 1565-1

<sup>(3)</sup> PP pipe according to EN 1852-1: 2009



# Appendix UL-EU CERTIFICATE

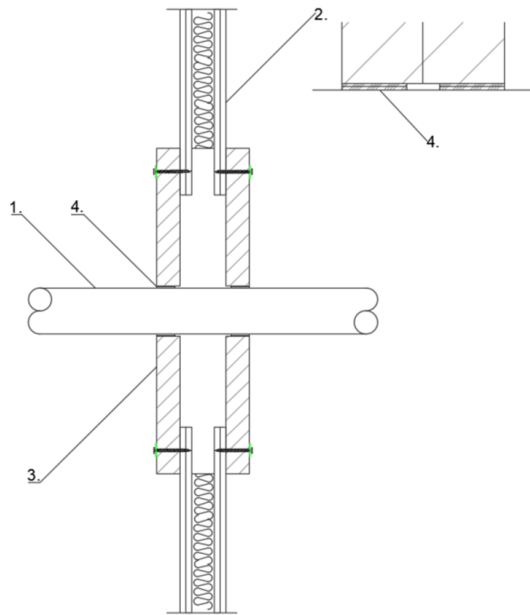
Certificate No. UL-EU-01032-CPR

Page 11/28

Date of Issue 2016-11-10

Plastic pipes in fischer FCPS Coated Panel System

Flexible or Rigid Walls  $\geq 100$  mm Insulated or uninsulated, lined, or unlined



## Key

1. Plastic Pipe
2. Flexible Wall
3. fischer FCPS Coated Panel System
4. Intumescent Pipe Wrap FiPW-E

Penetration Service	Opening Size (mm)	Distances (mm)	Installation	Classification
PVC-U, PVC-C <sup>(1)</sup> – See Graph 10 for scope	$\leq 1200 \times 750$	Edge – 50 Penetration Service $\geq 0$	Intumescent Pipe Wrap FiPW-E fit into both sides of the wall recessed by 5mm. fischer FCPS Coated Panel System pattress fit using fischer FiAM Intumescent Acoustic Mastic between joints. Fixed to the substrate using 6 x 80 steel screws and steel washers, 100 mm overlap onto substrate.	EI 60 U/C, C/C
PE, ABS, SAN-PVC <sup>(2)</sup> – See Graph 14 for scope				
PP <sup>(3)</sup> – See Graph 12 for scope				

All services supported with pipe supports at 400 mm from both faces of the wall.

<sup>(1)</sup> PVC-U pipe according to EN 1329-1, EN 1452-1 and EN 1453-1 and PVC-C according to EN 1566-1

<sup>(2)</sup> PE pipe according to EN 1519-1, EN 12201-2 and EN 12006-1, ABS according to EN 1455-1 and pipes made from SAN+PVC according to EN 1565-1

<sup>(3)</sup> PP pipe according to EN 1852-1: 2009

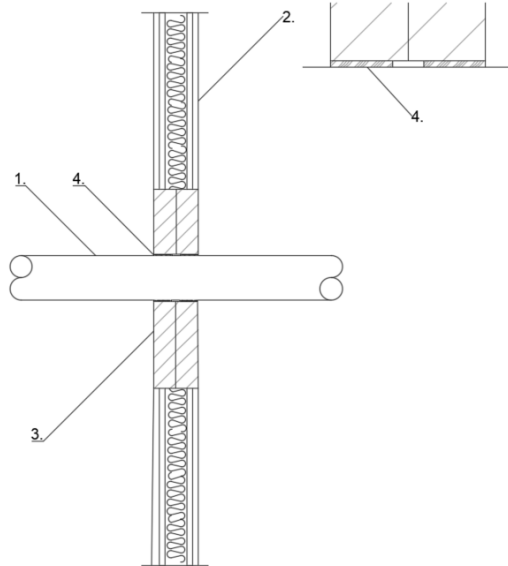




# Appendix UL-EU CERTIFICATE

Certificate No. UL-EU-01032-CPR  
 Page 12/28  
 Date of Issue 2016-11-10

Flexible or Rigid Walls  $\geq 100$  mm insulated, unlined, or lined



## Key

1. Plastic Pipe
2. Flexible Wall
3. fischer FCPS Coated Panel System
4. Intumescent Pipe Wrap FiPW-E

Penetration Service	Opening Size (mm)	Distances (mm)	Installation	Classification
PVC-U, PVC-C <sup>(1)</sup> – See Graph 15 for scope	≤ 1200 x 730	Edge – 100 Penetration Service ≥ 0	Intumescent Pipe Wrap FiPW-E fit into both sides of the wall recessed by 5mm. Two 50 mm back-to-back fischer FCPS Coated Panel System friction fit using fischer FiAM Intumescent Acoustic Mastic between joints.	EI 90 U/C, C/C
PE, ABS, SAN-PVC <sup>(2)</sup> – See Graph 13 for scope				
PP <sup>(3)</sup> – See Graph 11 for scope				
PVC-U, PVC-C <sup>(1)</sup> – See Graph 15 for scope	≤ 2600 x 2600			EI 60 U/C, C/C
PE, ABS, SAN-PVC <sup>(2)</sup> – See Graph 13 for scope				
PP <sup>(3)</sup> – See Graph 11 for scope				

All services supported with pipe supports at 400 mm from both faces of the wall.

<sup>(1)</sup> PVC-U pipe according to EN 1329-1, EN 1452-1 and EN 1453-1 and PVC-C according to EN 1566-1

<sup>(2)</sup> PE pipe according to EN 1519-1, EN 12201-2 and EN 12006-1, ABS according to EN 1455-1 and pipes made from SAN+PVC according to EN 1565-1

<sup>(3)</sup> PP pipe according to EN 1852-1: 2009



# Appendix UL-EU CERTIFICATE

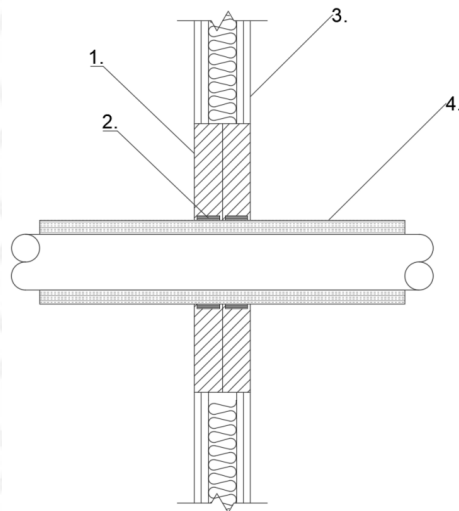
Certificate No. UL-EU-01032-CPR

Page 13/28

Date of Issue 2016-11-10

Insulated pipes in fischer FCPS Coated Panel System

Flexible or Rigid Walls  $\geq 100$  mm insulated, lined, or unlined



## Key

1. fischer FCPS Coated Panel System
2. Intumescent Pipe Wrap FiPW-E
3. Flexible Wall
4. Insulated Metallic Pipe

Penetration Service	Opening Size (mm)	Distances (mm)	Installation	Classification
Single copper or steel pipe 42 - 159 mm diameter and 1.2 - 14.2 mm wall with Continuous Sustained Elastomeric insulation 13 – 25 mm thick – See Graph 16 for scope	$\leq 2600 \times 2600$	Edge $\geq 50$ Penetration Service $\geq 50$	2 Layers of 40 mm wide Intumescent Pipe Wrap FiPW-E around the penetration service within two 50 mm back-to-back fischer FCPS Coated Panel System friction fit using fischer FiAM Intumescent Acoustic Mastic between joints.	EI 60 - C/U, C/C
Single copper or steel pipe 42 mm diameter and 1.2 mm wall with Continuous Sustained Elastomeric insulation 13 – 25 mm thick	$\leq 750 \times 1200$			E 120, EI 90 - C/U, C/C
Single copper or steel pipe 42 – 108 mm diameter and 1.2 - 14.2 mm wall with sustained/continuous Phenolic Foam insulation 25 – 40 mm thick	$\leq 2600 \times 2600$			EI 60 - C/U, C/C
	$\leq 750 \times 1200$			E 120, EI 60 - C/U, C/C
Single copper or steel pipe 42 mm diameter and 1.2 mm wall with with Continuous Sustained Phenolic Foam insulation 25 – 40 mm thick	$\leq 750 \times 1200$			E 120, EI 90 - C/U, C/C

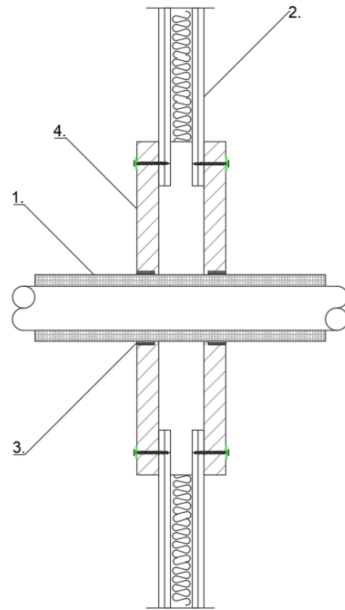
All services supported with pipe supports at 400 mm from both faces of the wall.



# Appendix UL-EU CERTIFICATE

Certificate No. UL-EU-01032-CPR  
 Page 14/28  
 Date of Issue 2016-11-10

Flexible or Rigid Walls  $\geq 100$  mm insulated or uninsulated, unlined or lined



## Key

1. Insulated Metallic Pipe
2. Flexible Wall
3. Intumescent Pipe Wrap FiPW-E
4. fischer FCPS Coated Panel System

Penetration Service	Opening Size (mm)	Distances (mm)	Installation	Classification
Single copper or steel pipe 42 - 159 mm diameter and 1.2 - 14.2 mm wall with Continuous Sustained Elastomeric foam insulation 13 - 25 mm thick - See Graph 16 for scope	$\leq 750 \times 1200$	Edge $\geq 50$ Penetration Service $\geq 50$	2 Layers of 40 mm wide Intumescent Pipe Wrap FiPW-E around the penetration service within two pattress fit (surface mount) fischer FCPS Coated Panel System using fischer FiAM Intumescent Acoustic Mastic between joints.	E 120, EI 60 - C/U, C/C
Single copper or steel pipe 42 mm diameter and 1.2 mm wall with Continuous Sustained Elastomeric foam insulation 13 - 25 mm thick				EI 120 - C/U, C/C
Single copper or steel pipe 42 - 159 mm diameter and 1.2 - 14.2 mm wall with Continuous Sustained Elastomeric foam insulation 25 mm thick - See Graph 16 for scope				EI 90 - C/U, C/C

All services supported with pipe supports at 400 mm from both faces of the wall.





# Appendix UL-EU CERTIFICATE

Certificate No. UL-EU-01032-CPR  
Page 15/28  
Date of Issue 2016-11-10

Penetration Service	Opening Size (mm)	Distances (mm)	Installation	Classification
Single copper or steel pipe 42 – 108 mm diameter and 1.2 – 14.2 mm wall with Continuous Sustained Phenolic Foam insulation 25 – 40 mm thick	≤ 750 x 1200	Edge – ≥ 50 Penetration Service ≥ 50	2 Layers of 40 mm wide Intumescent Pipe Wrap FiPW-E around the penetration service within two pattress fit (surface mount) fischer FCPS Coated Panel System using fischer FiAM Intumescent Acoustic Mastic between joints.	EI 90 - C/U, C/C
Single copper or steel pipe 42 mm diameter and 1.2 mm wall with Continuous Sustained Phenolic Foam insulation 25 – 40 mm thick				EI 120 - C/U, C/C
Single copper or steel pipe 42 – 108 mm diameter and 1.2 - 14.2 mm wall with Continuous Sustained Phenolic Foam insulation 40 mm thick				E 120, EI 90 - C/U, C/C



# Appendix UL-EU CERTIFICATE

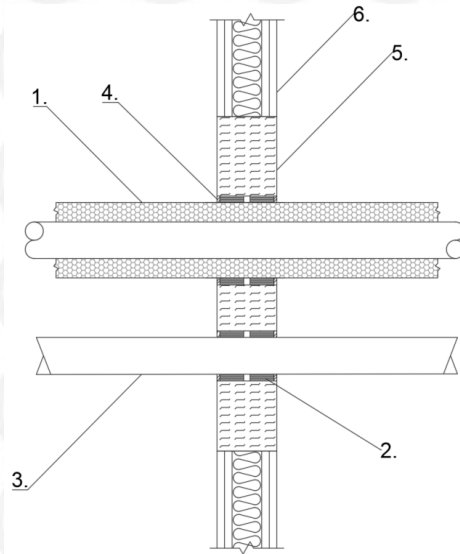
Certificate No. UL-EU-01032-CPR

Page 16/28

Date of Issue 2016-11-10

Plastic pipes, insulated metallic pipes and duct in fischer FFB-ES Elastoseal System

Flexible or Rigid Walls  $\geq 100$  mm Insulated, unlined or lined



## Key

1. Insulated Metallic Pipe
2. Intumescent Pipe Wrap FiPW-E
3. Plastic Duct or Pipe
4. fischer FiAM Intumescent Acoustic Mastic
5. fischer FFB-ES Elastoseal
6. Flexible Wall

Penetration Service	Opening Size (mm)	Distances (mm)	Installation	Classification
54 mm diameter by 1.2 mm wall thickness Copper pipe with Continuous Sustained Kooltherm insulation 35 mm thick	≤ 1200 x 730	Edge – ≥ 50 Penetration Service ≥ 100	Intumescent Pipe Wrap FiPW-E fit into both sides of the wall recessed by 5 mm. fischer FFB-ES Elastoseal board system, made up of horizontally laid strips dry but jointed together to form a barrier, friction fitted within the aperture around the services and coated on both faces using fischer FFB-ES Elastoseal.	E 120, EI 90 - C/U, C/C
76 mm diameter by 1.5 mm wall thickness Copper pipe, with Continuous Sustained elastomeric insulation 40 mm thick		Edge – ≥ 100 Penetration Service ≥ 100		E 120, EI 90 - C/C
220 mm by 90 mm PVC plastic vent duct		Edge – ≥ 0 Penetration Service ≥ 100		E 120, EI 90 - C/C
PVC-U, PVC-C – See Graph 15 for scope		Edge – ≥ 70 Penetration Service ≥ 0		EI 120 - C/U, C/C
PE, ABS, SAN-PVC – See Graph 13 for scope				
PP – See Graph 11 for scope				

All services supported with pipe supports at 400 mm from both faces of the wall.



# Appendix UL-EU CERTIFICATE

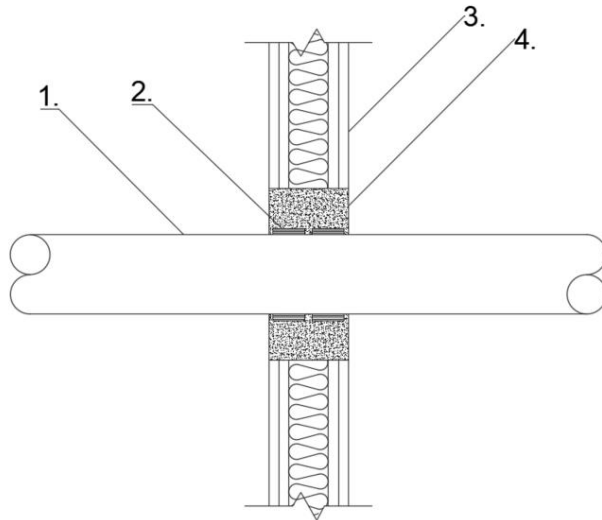
Certificate No. UL-EU-01032-CPR

Page 17/28

Date of Issue 2016-11-10

Plastic pipes in fischer FFSC FireStop Compound

Flexible or Rigid Walls  $\geq 100$  mm



## Key

1. Plastic Pipe
2. Intumescent Pipe Wrap FiPW-E
3. Flexible Wall
4. fischer FFSC FireStop Compound

Penetration Service	Annular Space (mm)	Distances (mm)	Installation	Classification
PVC-U, PVC-C <sup>(1)</sup> – See Graph 15 for scope	As required by dimensions of Intumescent Pipe Wrap FiPW-E + ≥ 57.5 mm	Penetration Service ≥ 100	Intumescent Pipe Wrap FiPW-E fit into both sides of the wall recessed by 5 mm. fischer FFSC FireStop Compound applied to both sides of the wall sealing in the wrap, full depth of wall	EI 90 U/C, C/C
PE, ABS, SAN-PVC <sup>(2)</sup> – See Graph 13 for scope				
PP <sup>(3)</sup> – See Graph 11 for scope				
125 mm diameter by 3.1 mm wall thickness PE pipe	295 x 215	Edge – 10 Penetration Service ≥ 0		
125 mm diameter by 7.4 mm wall thickness PVC pipe				
50 mm diameter by 2 mm wall thickness PP pipe				

All services supported with pipe supports at 400 mm from both faces of the wall.

<sup>(1)</sup> PVC-U pipe according to EN 1329-1, EN 1452-1 and EN 1453-1 and PVC-C according to EN 1566-1

<sup>(2)</sup> PE pipe according to EN 1519-1, EN 12201-2 and EN 12006-1, ABS according to EN 1455-1 and pipes made from SAN+PVC according to EN 1565-1

<sup>(3)</sup> PP pipe according to EN 1852-1: 2009





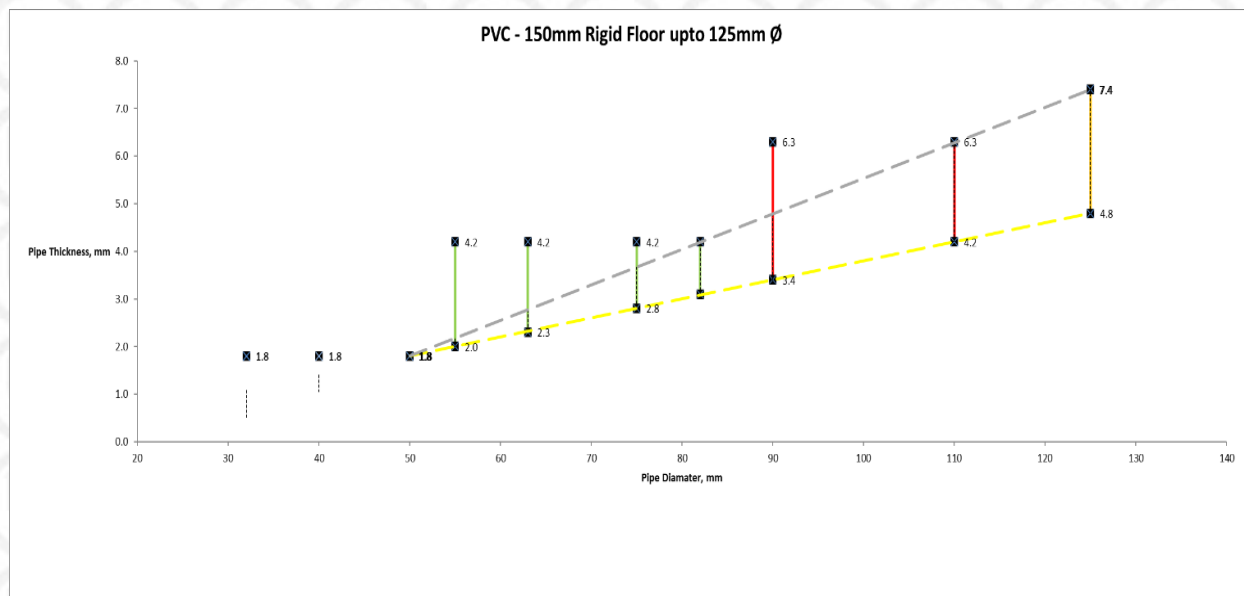
# Appendix UL-EU CERTIFICATE

Certificate No. UL-EU-01032-CPR  
Page 18/28  
Date of Issue 2016-11-10

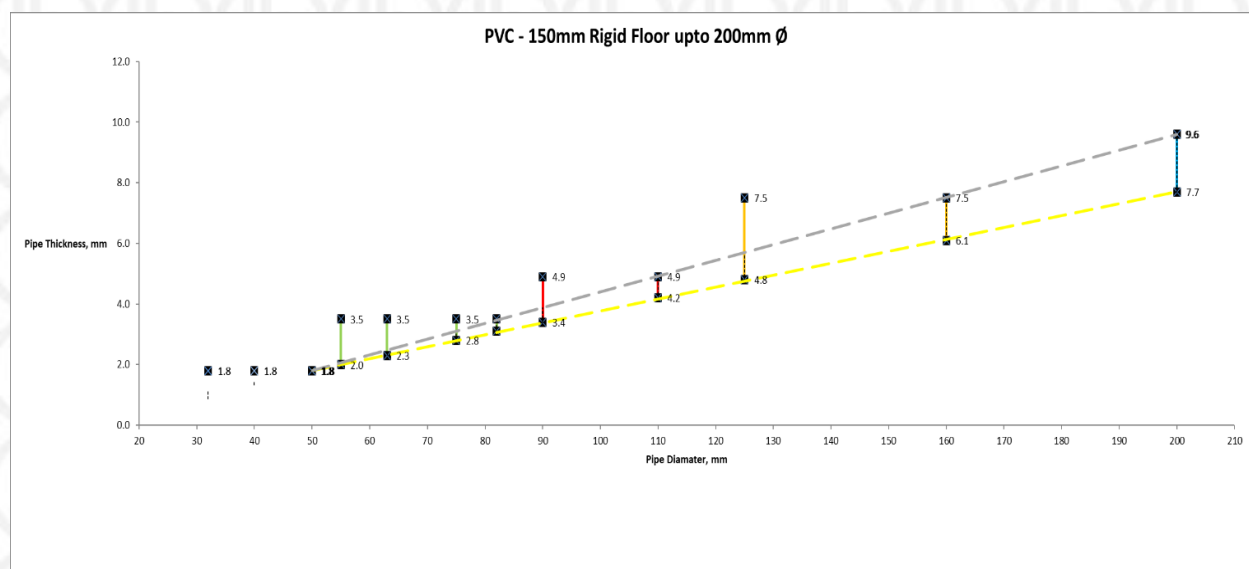
Scope and Usage

Floor

Graph 1



Graph 2



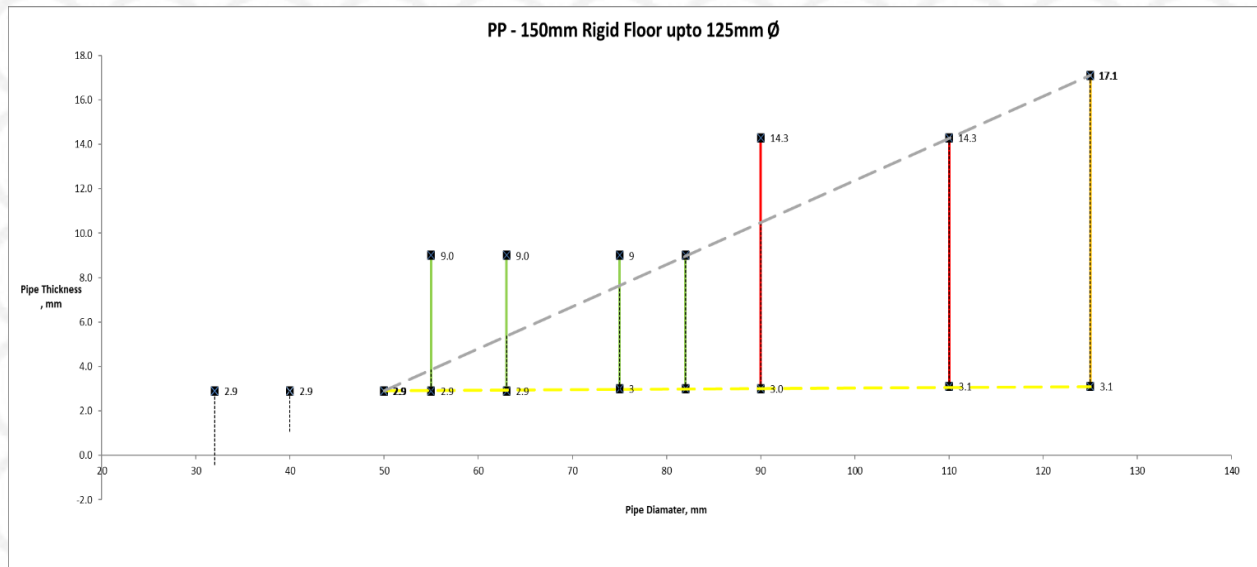
Form-ULID-006104 (DCS:27-CP-F0855) 5.0



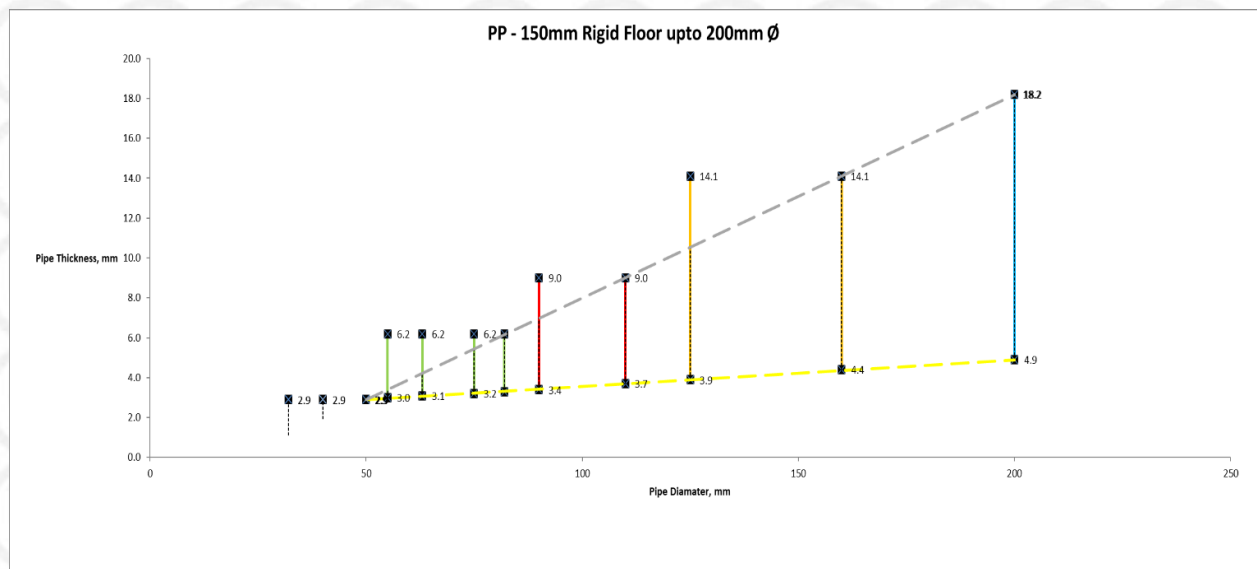
# Appendix UL-EU CERTIFICATE

Certificate No. UL-EU-01032-CPR  
Page 19/28  
Date of Issue 2016-11-10

Graph 3



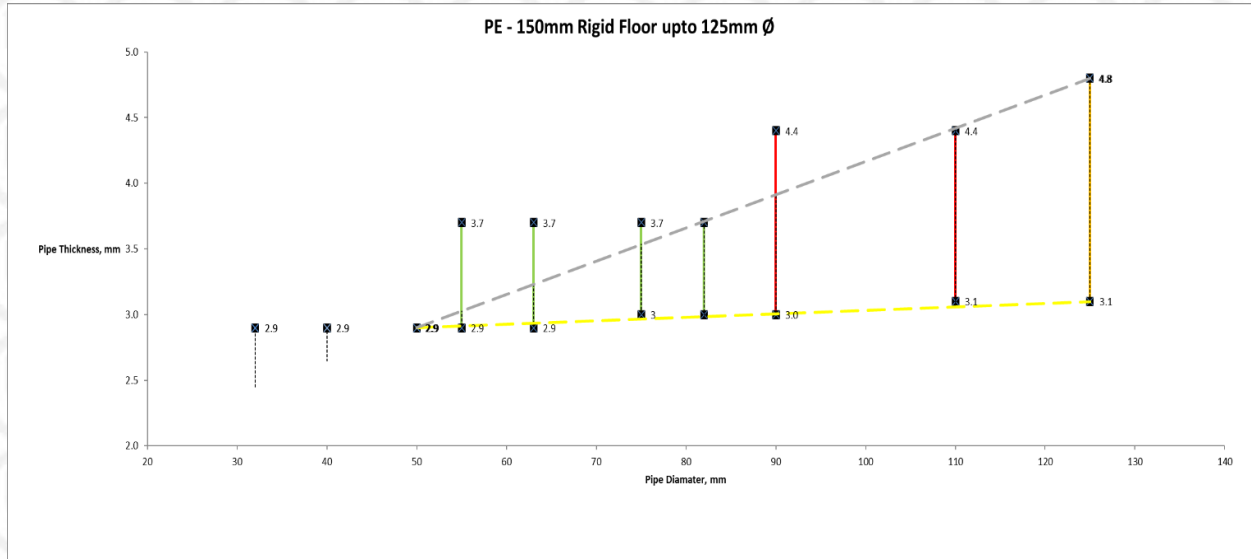
Graph 4



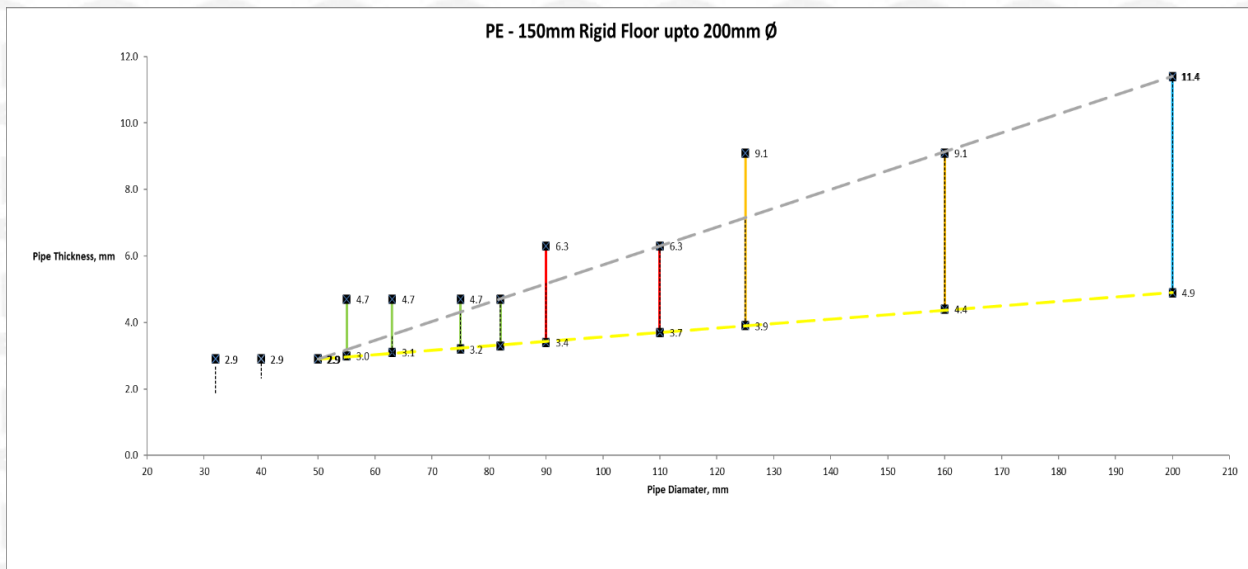
# Appendix UL-EU CERTIFICATE

Certificate No. UL-EU-01032-CPR  
Page 20/28  
Date of Issue 2016-11-10

Graph 5



Graph 6

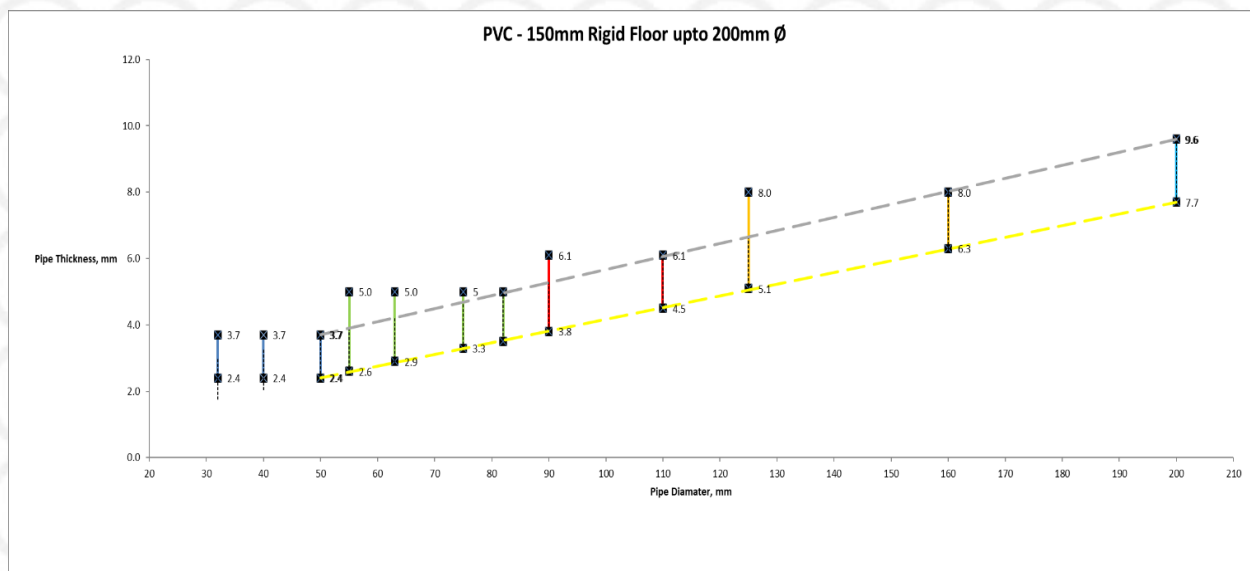




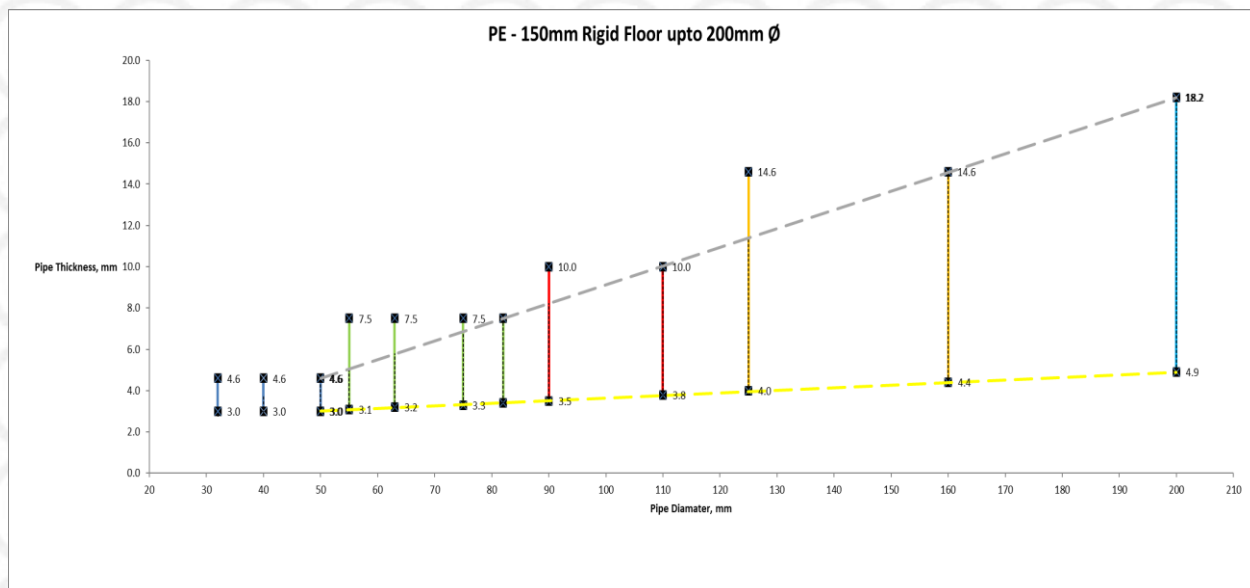
# Appendix UL-EU CERTIFICATE

Certificate No. UL-EU-01032-CPR  
 Page 21/28  
 Date of Issue 2016-11-10

Graph 7



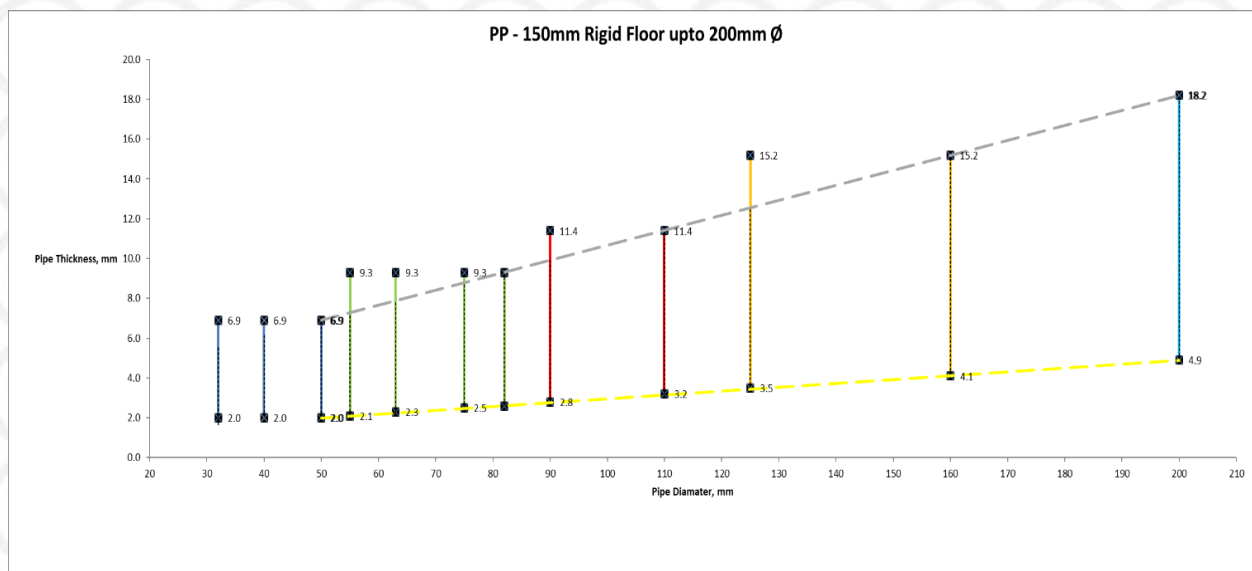
Graph 8



# Appendix UL-EU CERTIFICATE

Certificate No. UL-EU-01032-CPR  
Page 22/28  
Date of Issue 2016-11-10

Graph 9

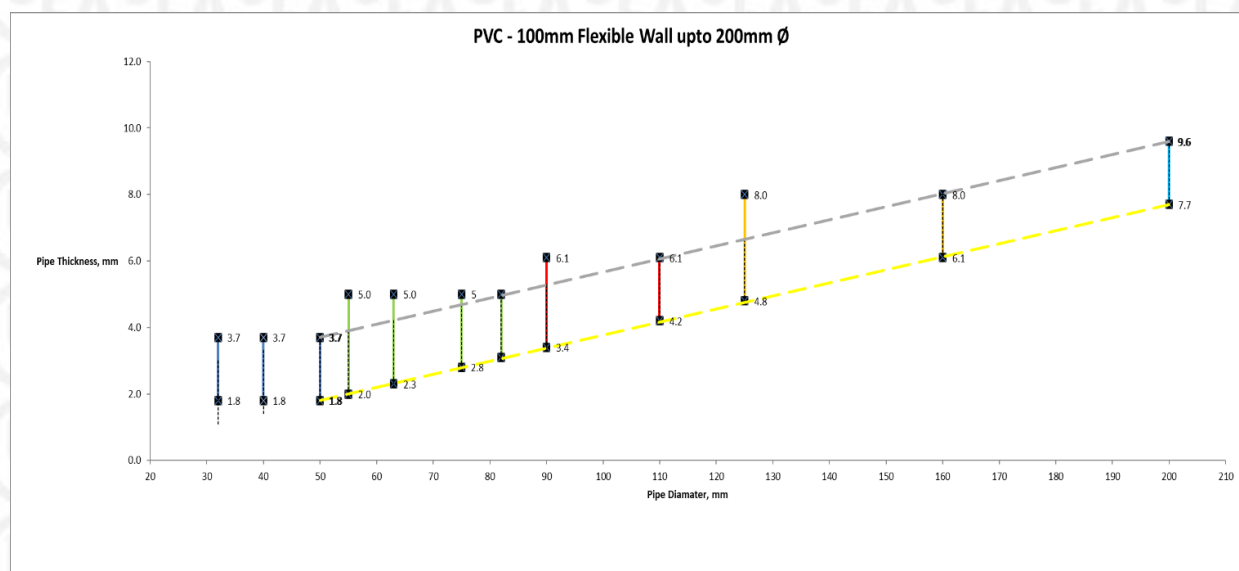


# Appendix UL-EU CERTIFICATE

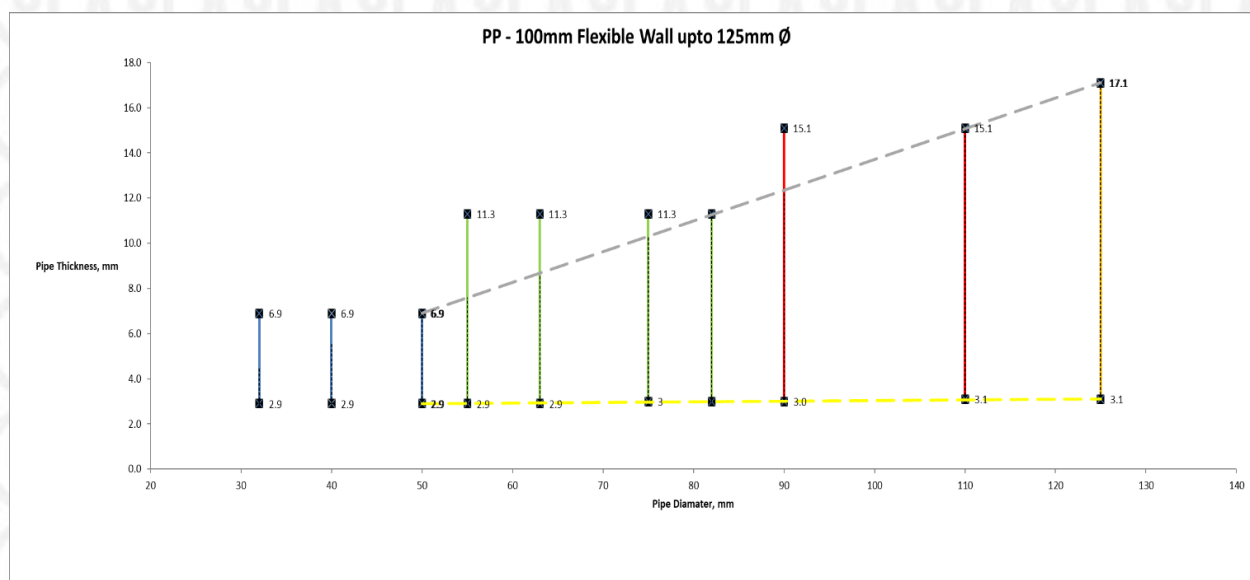
Certificate No. UL-EU-01032-CPR  
 Page 23/28  
 Date of Issue 2016-11-10

Wall

Graph 10



Graph 11

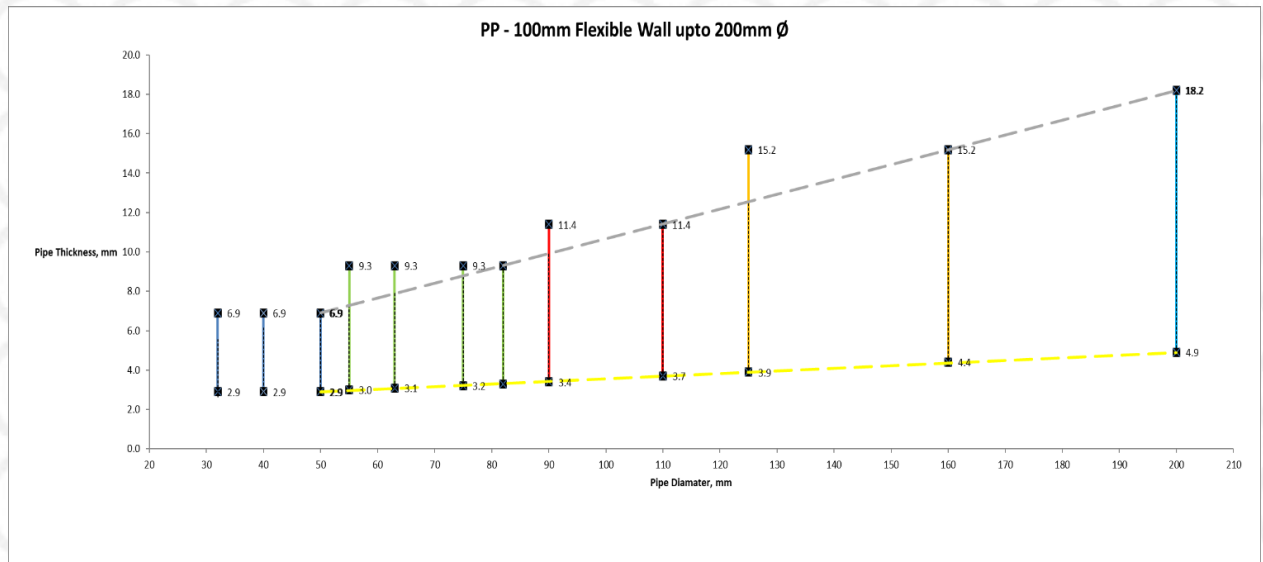




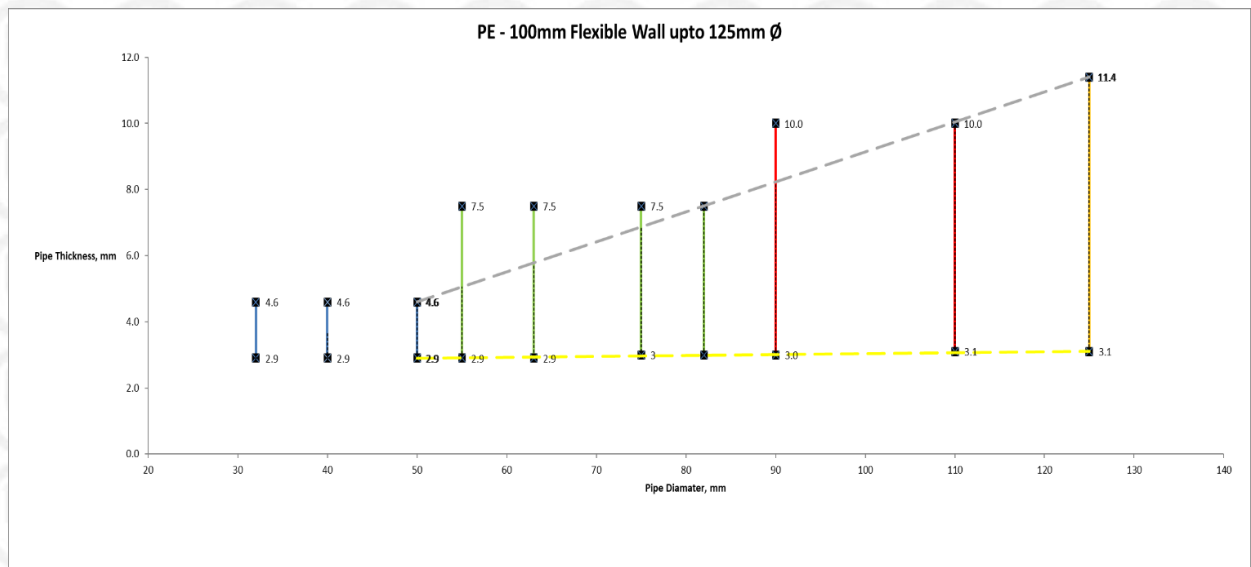
# Appendix UL-EU CERTIFICATE

Certificate No. UL-EU-01032-CPR  
 Page 24/28  
 Date of Issue 2016-11-10

Graph 12



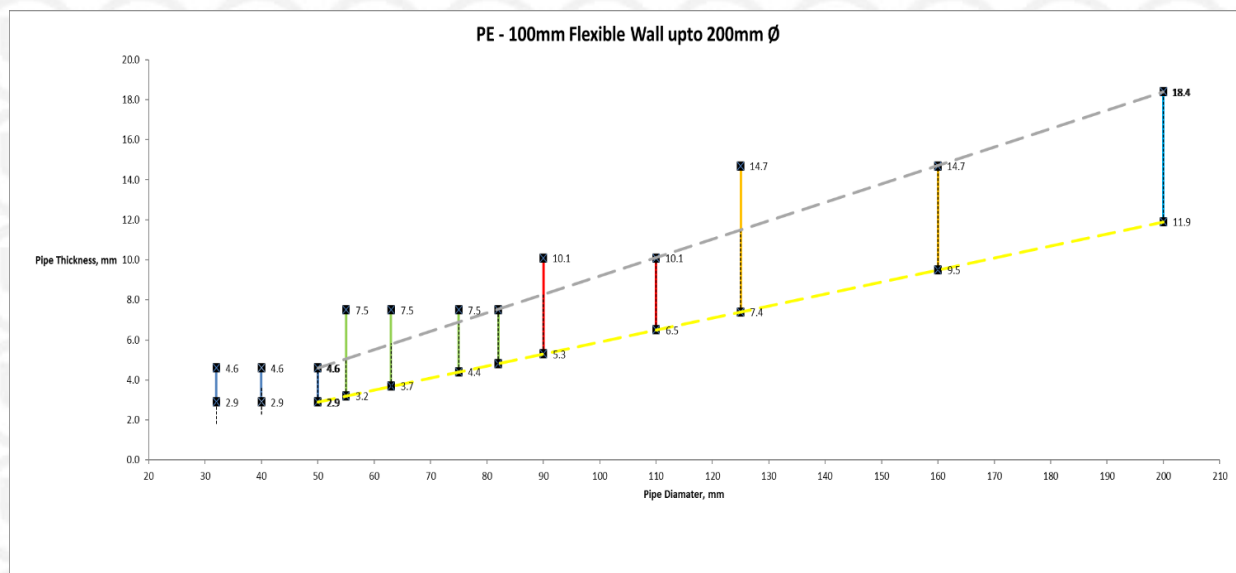
Graph 13



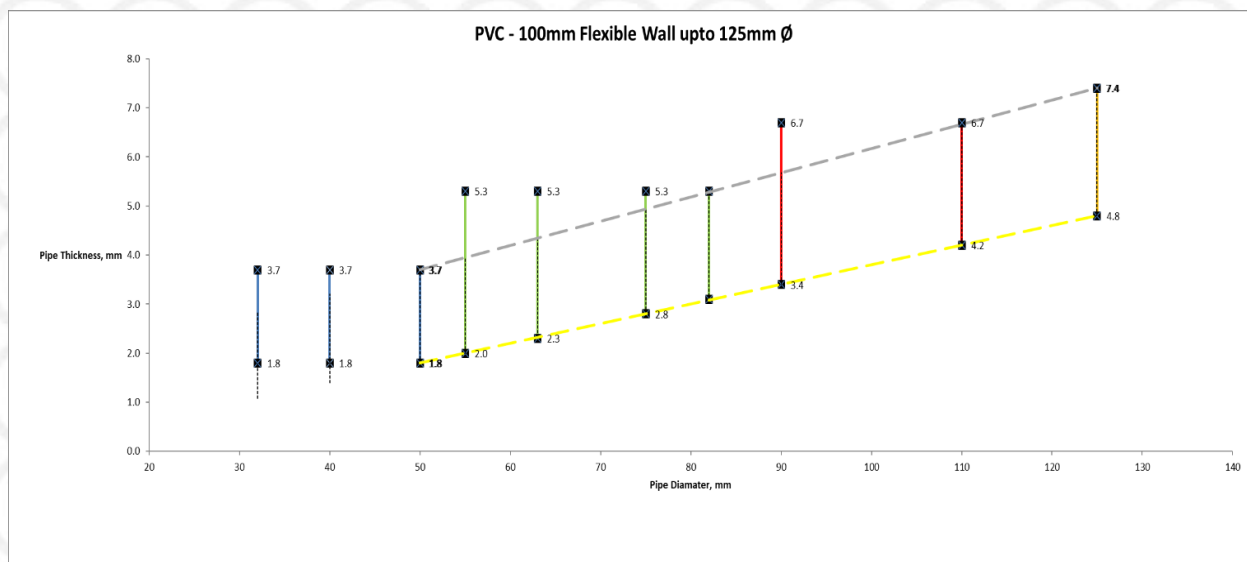
# Appendix UL-EU CERTIFICATE

Certificate No. UL-EU-01032-CPR  
Page 25/28  
Date of Issue 2016-11-10

Graph 14



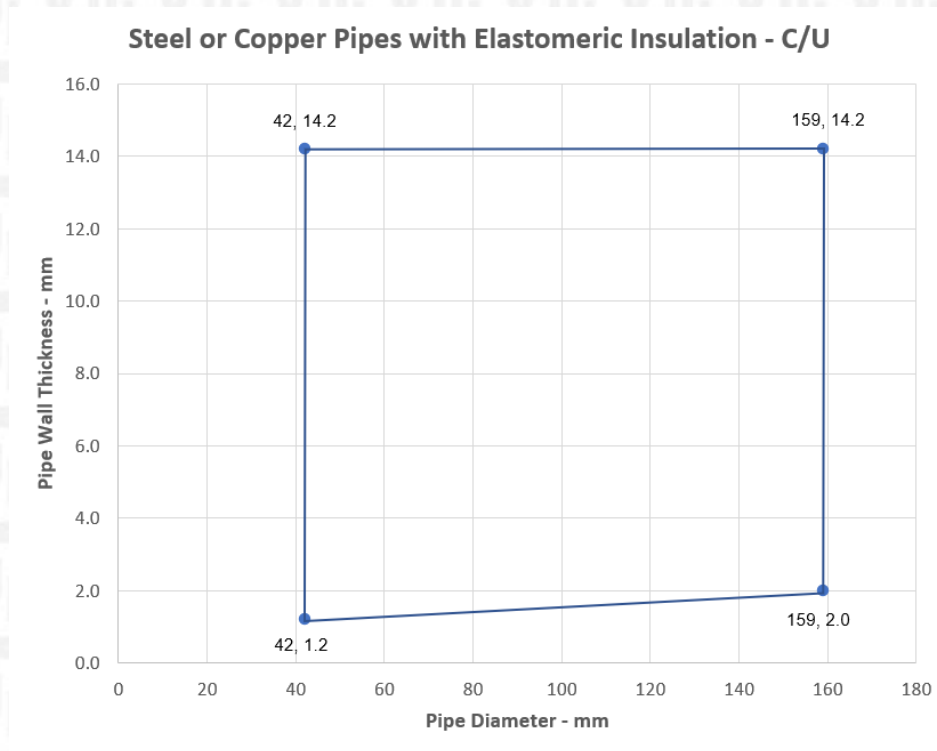
Graph 15



# Appendix UL-EU CERTIFICATE

Certificate No. UL-EU-01032-CPR  
Page 26/28  
Date of Issue 2016-11-10

Graph 16





# Appendix UL-EU CERTIFICATE

Certificate No. UL-EU-01032-CPR  
 Page 27/28  
 Date of Issue 2016-11-10

Intumescent Pipe Wrap FiPW-E Usage

Ensure penetration service has been tested, tables are for usage guidance only.

Intumescent Pipe Wrap FiPW-E Applied both sides of wall/floor	
For use with plastic pipes	
Pipe Ø (mm)	Layers of Intumescent Pipe Wrap FiPW-E
40	2
55	2
63	2
75	2
82	2
90	3
110	3
125	4
140	4
160	4
200	5

Single Intumescent Pipe Wrap FiPW-E Applied in floor	
For use with plastic pipes	
Pipe Ø (mm)	Layers of Intumescent Pipe Wrap FiPW-E
40	4
55	4
63	4
75	4
82	4
90	6
110	6
125	8
140	8
160	8
200	10

Intumescent Pipe Wrap FiPW-E Applied both sides of wall/floor	
For use with insulated metallic pipes	
Insulation type	
Phenolic Insulation	2
Elastomeric Insulation	2
Glass wool	2
Stone wool	2

Intumescent Pipe Wrap FiPW-E Applied both sides of wall/floor	
For use with other services	
Penetration	Layers of Intumescent Pipe Wrap FiPW-E
PVC Duct	3



# Appendix UL-EU Certificate

<b>Certification Mark</b>	<b>UL-EU mark</b>
<b>Certificate No.</b>	<b>UL-EU-01032-CPR</b>
<b>Page</b>	<b>28/28</b>
<b>Date of Issue</b>	<b>2016-11-10</b>

The UL-EU Mark, as displayed below, shall appear on certified products only. Minimum size is not specified, as long as the Mark is legible. The following is suggested.



The minimum height of the registered trademark symbol ® shall be 1 mm. When the overall diameter of the UL-EU Mark is less than 9.5 mm, the trademark symbol may be omitted if it is not legible to the naked eye.

The UL-EU Mark may appear on a label, nameplate, or may be cast, stamped or molded into the product. When appearing on a label or nameplate, the Manufacturer's name or trademark along with a model number are also required on that same label or nameplate. If cast, stamped or molded, the Manufacturer's name or trademark and model number shall also appear elsewhere on the product.

All content shall be in accordance with the details provided on this UL-EU Certificate.

## PROCUREMENT

The Production site may reproduce the Mark or obtain it from a UL authorized supplier. The list of UL authorized suppliers can be found on UL's online directory at [www.ul.com](http://www.ul.com).

Form-ULID-006104 (DCS:27-CP-F0855) 5.0

